

STAGE

8-9 Well Court,
Bank, London, EC4M 9DN

2,509 sq ft / 233.10 sq m

Smart fully fitted workspace in a vibrant
part of the City

AVAILABLE ON FLEXIBLE TERMS

FULLY FITTED AND FURNISHED

EXCELLENT CITY LOCATION



stage-re.co.uk

STAGE



STAGE



STAGE

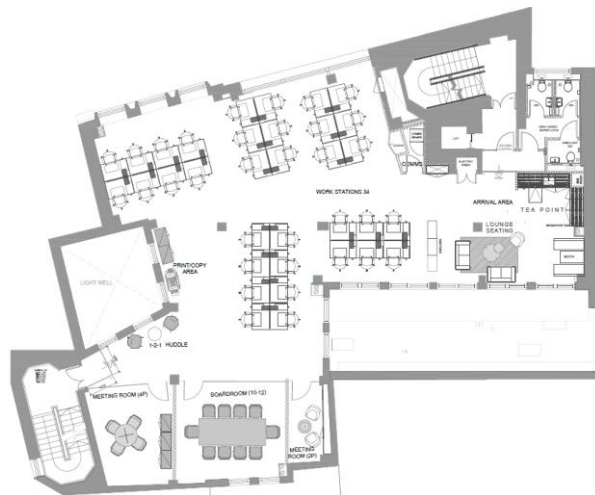


Amenities

- x34 workstations
- x1 10-person board room
- x1 4-person meeting room
- x1 2-person call room
- Kitchenette with dining area
- Demised WCs
- Shower facilities
- Cycle storage
- Passenger Lift
- EPC – B



Floor Plan



Indicative only. Not to scale.

 Virtual Tour Link

Floor Areas

Floor	sq ft	sq m	Workstations
2 nd	2,509	233.10	34
Total	2,509	233.10	34

Location & Connectivity



Mansion House

2 mins



St Pauls

3 mins



Bank

4 mins

Outgoings

Rent: £62.50 per sq ft

Business Rates: £21.17 per sq ft

Service Charge: £17.50 per sq ft

Term

A new flexible lease is available for a term of 24 months plus direct from the landlord