



DEVONSHIRE HOUSE
1 MAYFAIR PLACE

3,401 SQ FT FITTED OFFICES TO LET

MAYFAIR W1



EXCLUSIVE MAYFAIR LANDMARK

This prestigious building features a grand entrance and large communal terrace, offering the best views in Mayfair. The available part third floor provides 3,401 sq ft of premium fully-fitted office space, perfect for businesses looking to get straight to work.

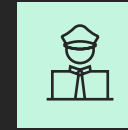
SPECIFICATION



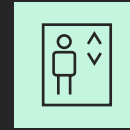
Communal sky terrace



Fully fitted



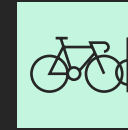
24 hour access & security



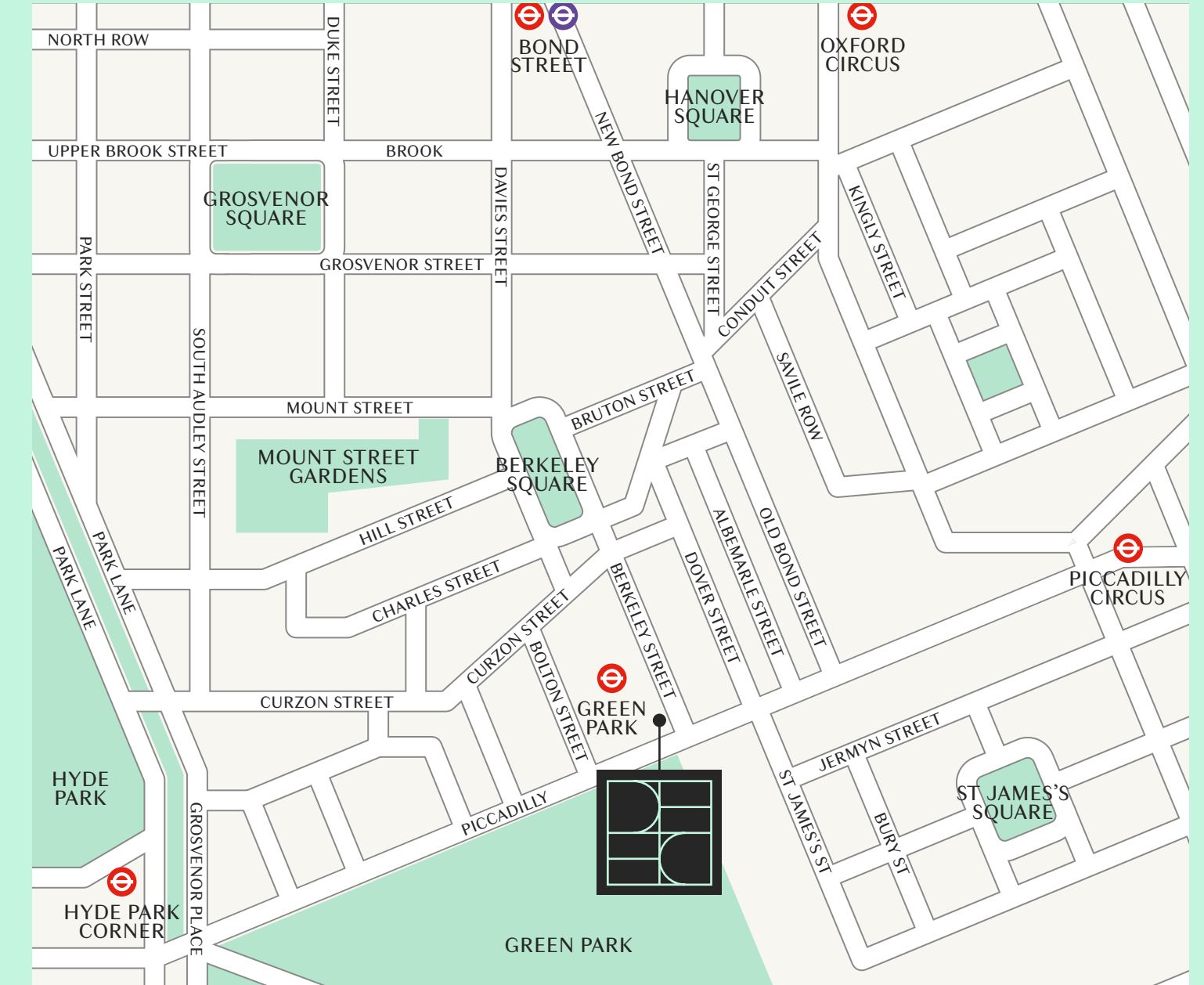
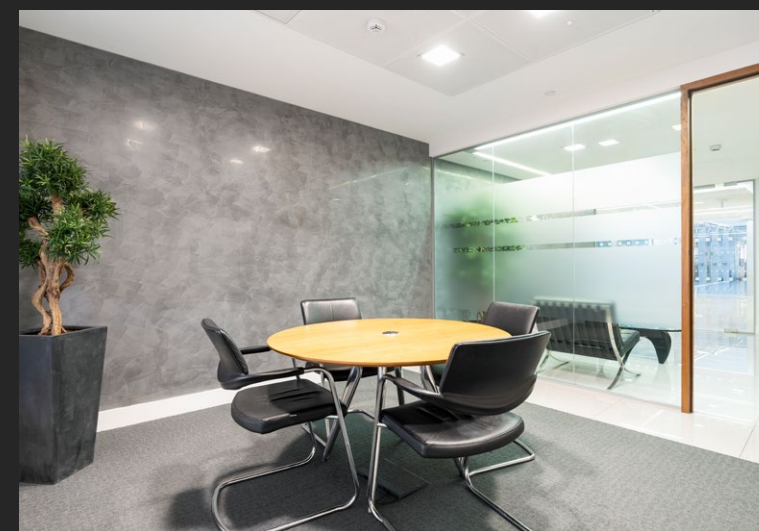
6x8 passenger lift



Air conditioning



Showers & cycle racks



LOCATION

Situated in the heart of Mayfair, adjacent to Green Park and The Ritz, with its wide variety of luxury retail, bars, and restaurants. There are five underground stations in close proximity along with the Elizabeth line at Bond Street, providing excellent connectivity.



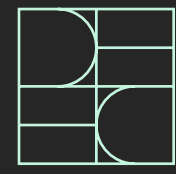
GREEN PARK
01 mins walk



PICCADILLY CIRCUS
09 mins walk



BOND STREET
12 mins walk

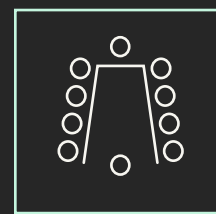


READY FOR OCCUPATION

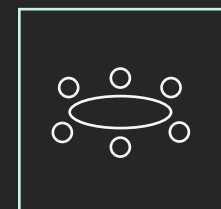
The available fully fitted floor provides an open, and bright office environment.



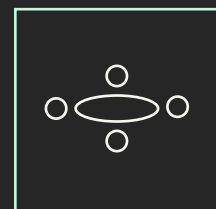
28 open plan workstations



1 x 10 person boardroom



2 x 6 person meeting room



1 x 4 person meeting room



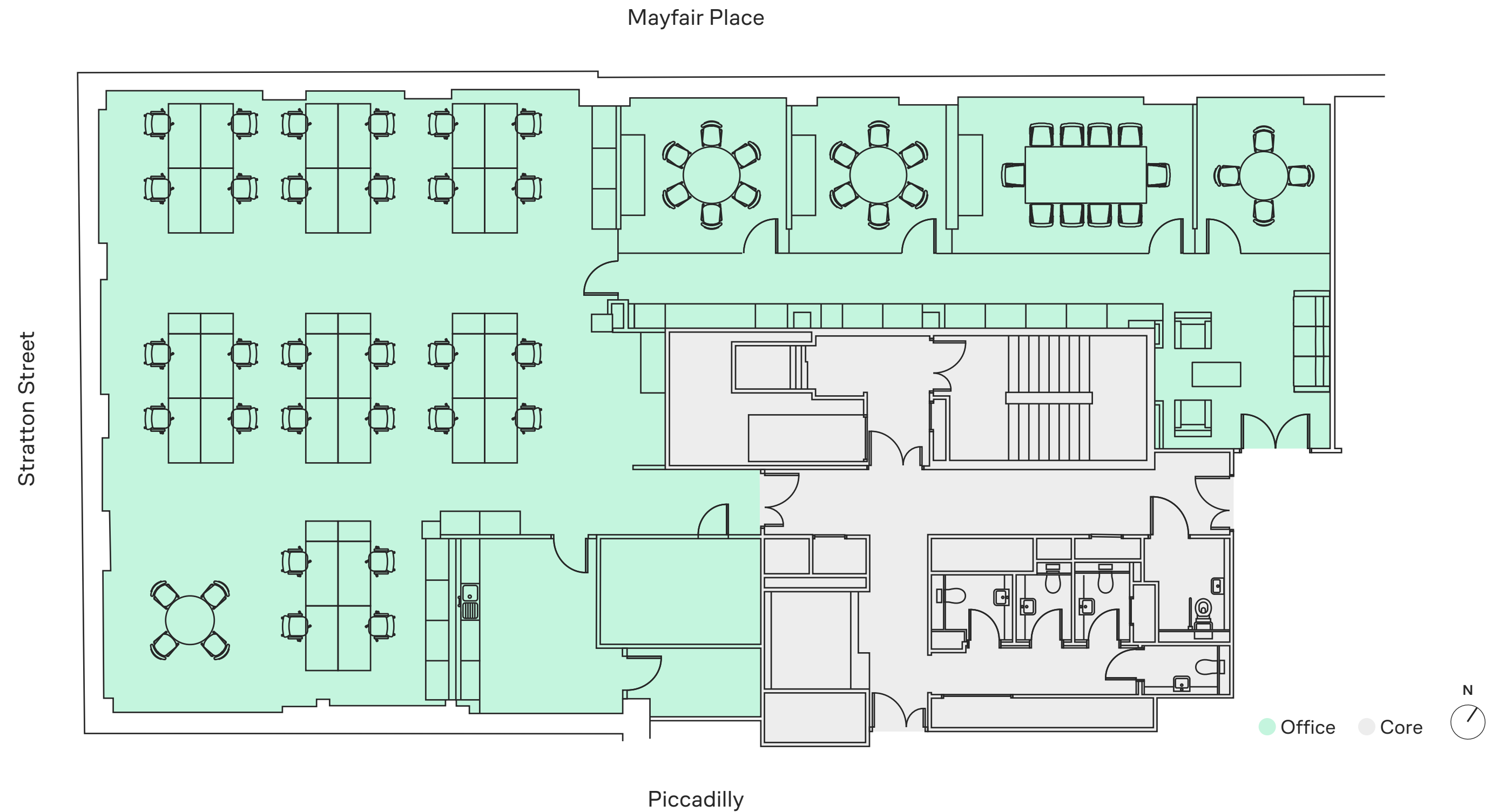
1 x kitchenette



1 x welcome area

PART 3RD FLOOR

3,401 sq ft / 315.96 sq m



VIEWINGS

Strictly through sole letting agents.

TERMS

Upon application.

JAMIE SHUTTLE

07788 414332
jshuttle@edwardcharles.co.uk

AMY SKIDMORE

07734 924146
askidmore@edwardcharles.co.uk

EDWARD CHARLES & PARTNERS W1
CHARTERED SURVEYORS