



N°7

SAVOY

COURT

# A LONDON ORIGINAL

For almost 200 years, private road Savoy Court WC2 has formed one of the most celebrated addresses in Central London - a destination of its own.

7 Savoy Court sits alongside The Savoy Hotel, world renowned and iconically London where innovation, glamour and character shape daily life.



# FIRST IMPRESSIONS MATTER



The arrival experience at 7 Savoy Court has been designed with the same level of care as the workplace itself. Calm lighting, refined materials and understated detailing create a reception environment that feels welcoming, composed and quietly confident.



# GROUNDING IN HISTORY.

While rooted in the heritage of the Savoy estate, 7 Savoy Court has been considerably upgraded to meet the demands of modern occupiers. Achieving an EPC A rating, alongside upgraded VRF systems and contemporary workplace infrastructure, the building combines historic character with future-focused performance.

# BUILT FOR THE FUTURE.

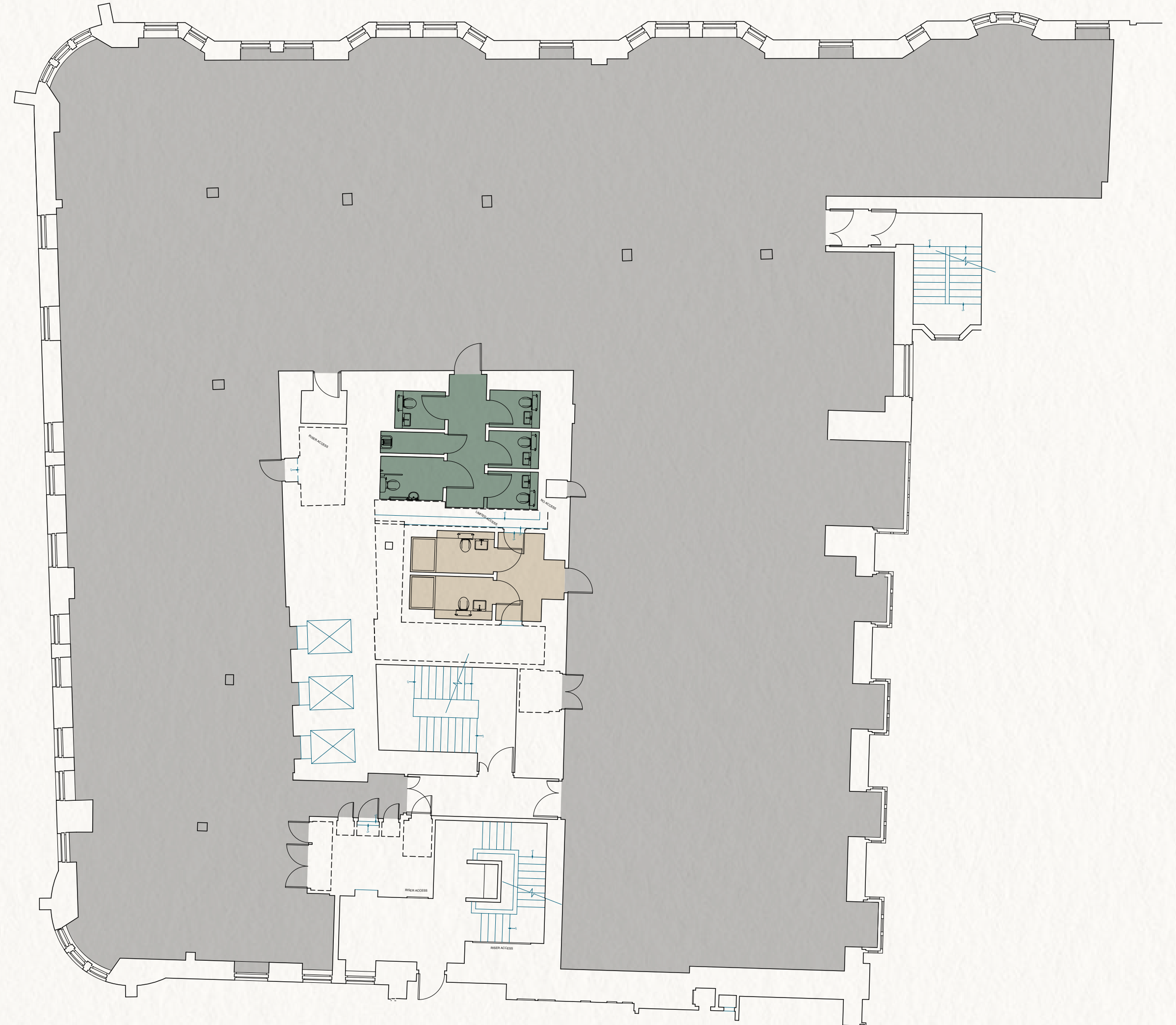
# FOURTH FLOOR

8,101 sq ft / 753 sq m



STRAND

SAVOY COURT



- Office
- WC
- Showers





# FOURTH FLOOR



Indicative Space Plan  
8,101 sq ft / 753 sq m

- Office
- WC
- Showers

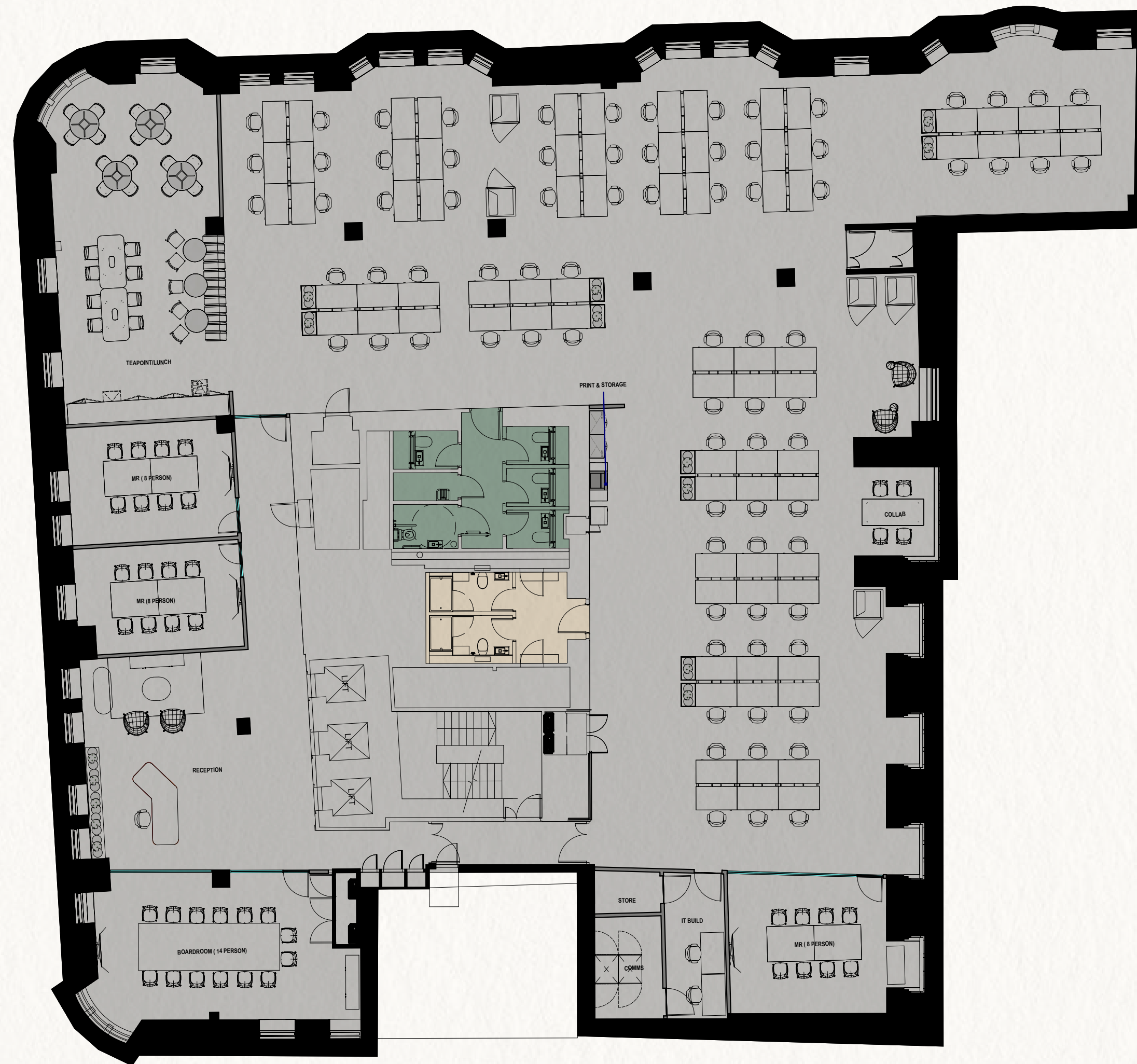
High Density Plan

Open Plan Desks	80
Density Ratio	1:10 sq m

- 16 person board room
- 8 person hot desking
- 4 person meeting room
- 2 large informal meeting rooms
- 5 meeting booths
- 3 phone booths

STRAND

SAVOY COURT

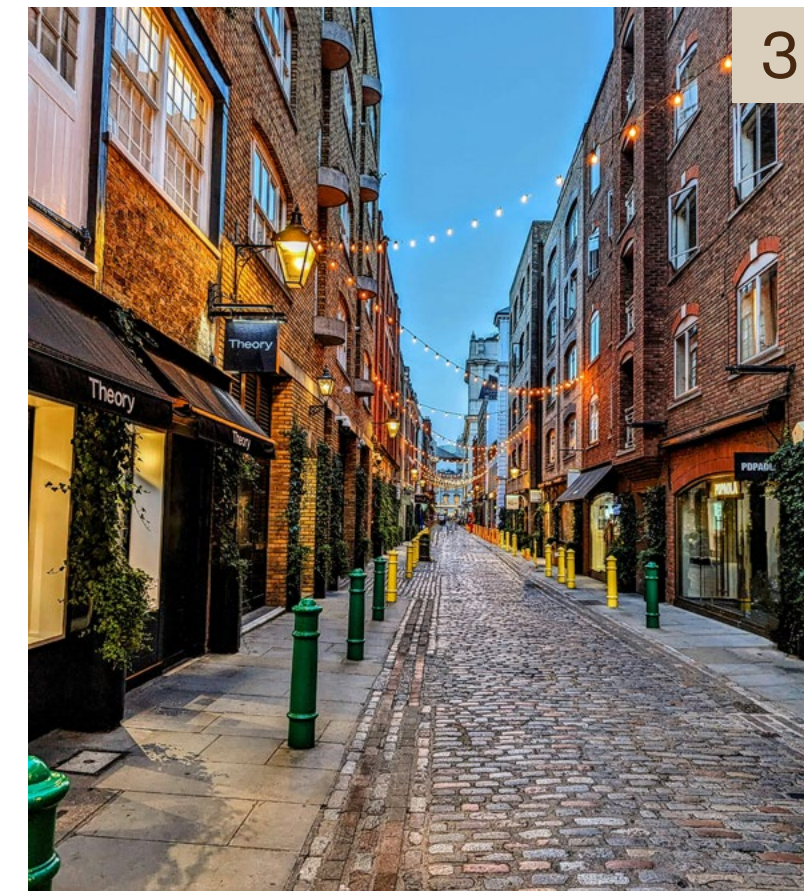




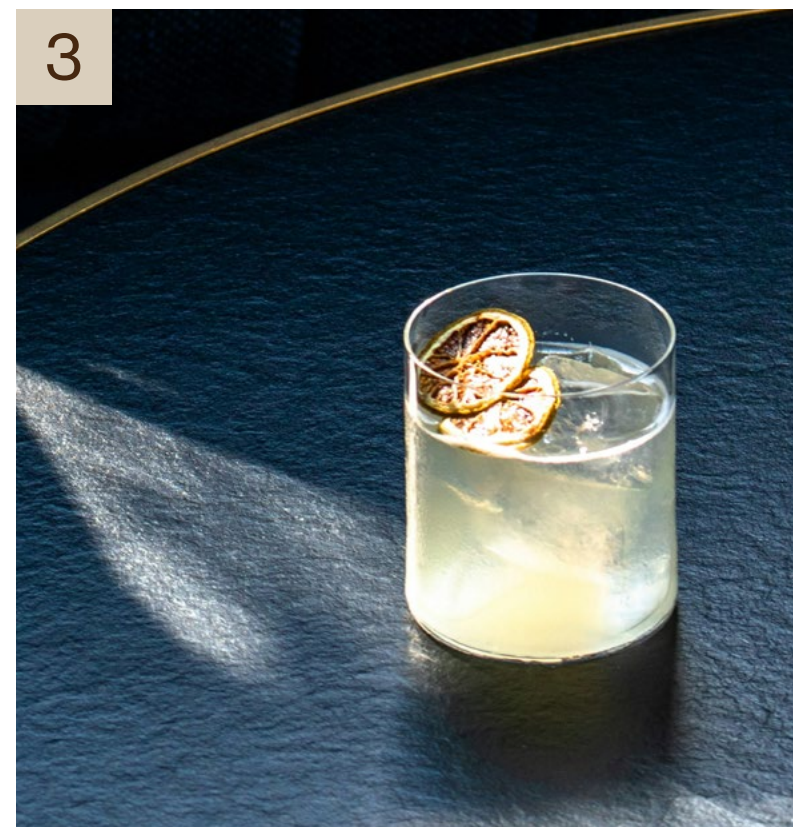
Thoughtfully refurbished office floors designed to support focused, modern working. Flexible floor plates, exposed architectural character and contemporary fit-outs create spaces that feel calm, functional and considered throughout.

# THE BEST OF LONDON, RIGHT HERE

From quiet morning coffees to late evening dinners, 7 Savoy Court places businesses within one of London's most established and culturally rich neighbourhoods.



1. St James's Park
2. Covent Garden Market
3. Floral Street Retail
4. Covent Garden Station
5. Covent Garden Piazza
6. Maiden Lane



# THE PRESTIGE OF A GLOBAL ADDRESS



World-renowned hospitality, retail and culture, all within walking distance of the office. A location that works as well after hours as it does during them.

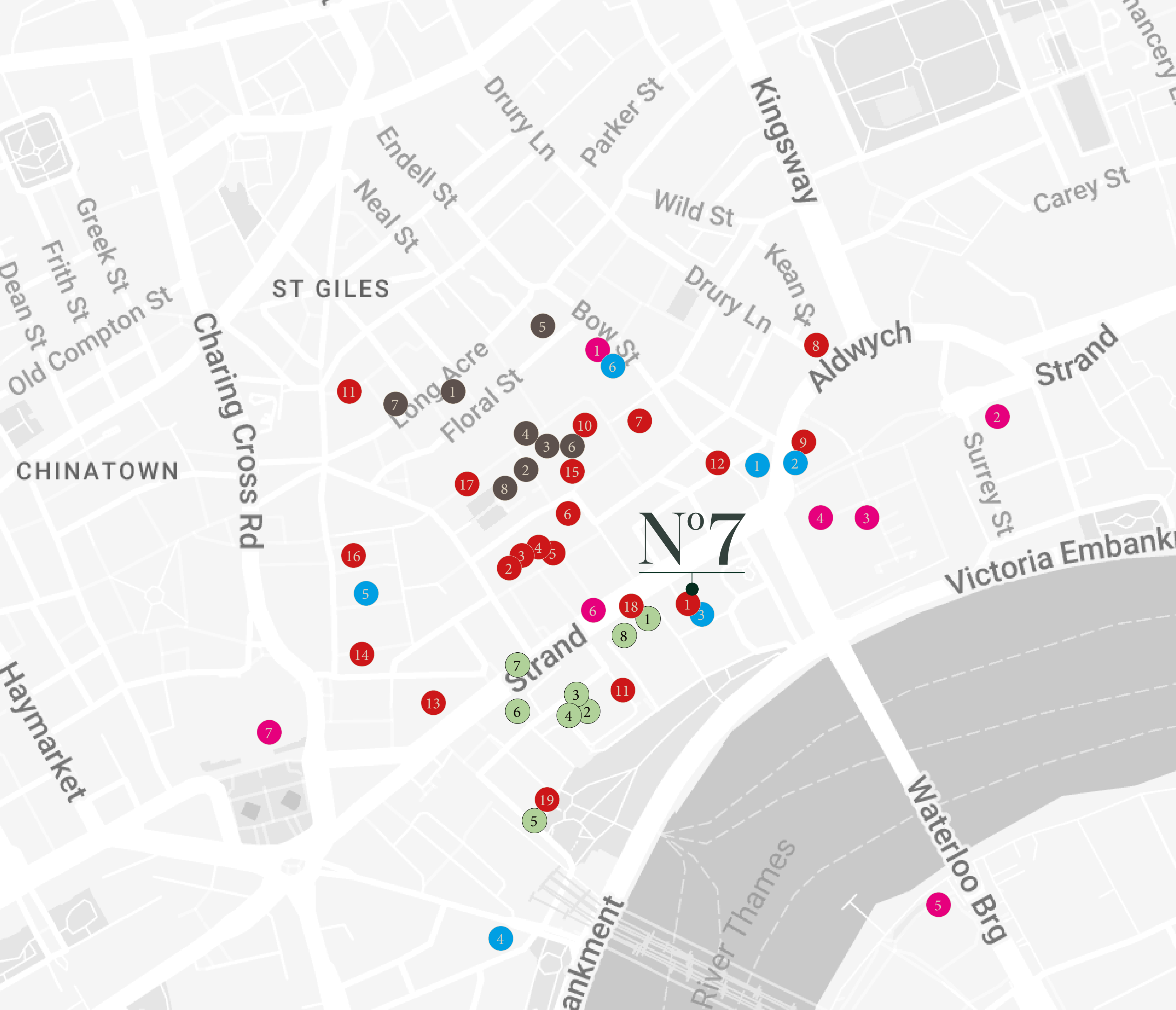


1. The River Restaurant by Gordon Ramsay
2. Afternoon Tea in The Gallery
3. The Cocktail Bar, Rules Restaurant
4. Theatre Royal
5. The Savoy Hotel
6. Balthazar
7. Savoy Grill by Gordon Ramsay

# LOCATION

Positioned between Covent Garden, the Strand and the River Thames, 7 Savoy Court sits at the intersection of culture, commerce and hospitality.

From globally recognised occupiers to independent restaurants, luxury retail and historic institutions, this is a part of London that continues to define modern business life.



## RESTAURANTS / BARS

- 1 The Savoy Grill by Gordon Ramsay
- 2 Henrietta
- 3 Frenchie
- 4 Sticks 'n' Sushi
- 5 Rules
- 6 Ivy Market Grill
- 7 Balthazar
- 8 The Delaunay
- 9 Radio Rooftop
- 10 SUSHI SAMBA
- 11 Dishoom
- 12 Christopher's
- 13 Barrafinna
- 14 Fumo
- 15 Cache Cache
- 16 Mr Fogg's Tavern
- 17 Clos Maggiore
- 18 Simpson's on The Strand
- 19 Gordon's Wine Bar

## RETAIL

- 1 Reiss
- 2 Chanel
- 3 Dior
- 4 Apple
- 5 All Saints
- 6 Mulberry
- 7 Lululemon
- 8 Polo Ralph Lauren

## HOTELS

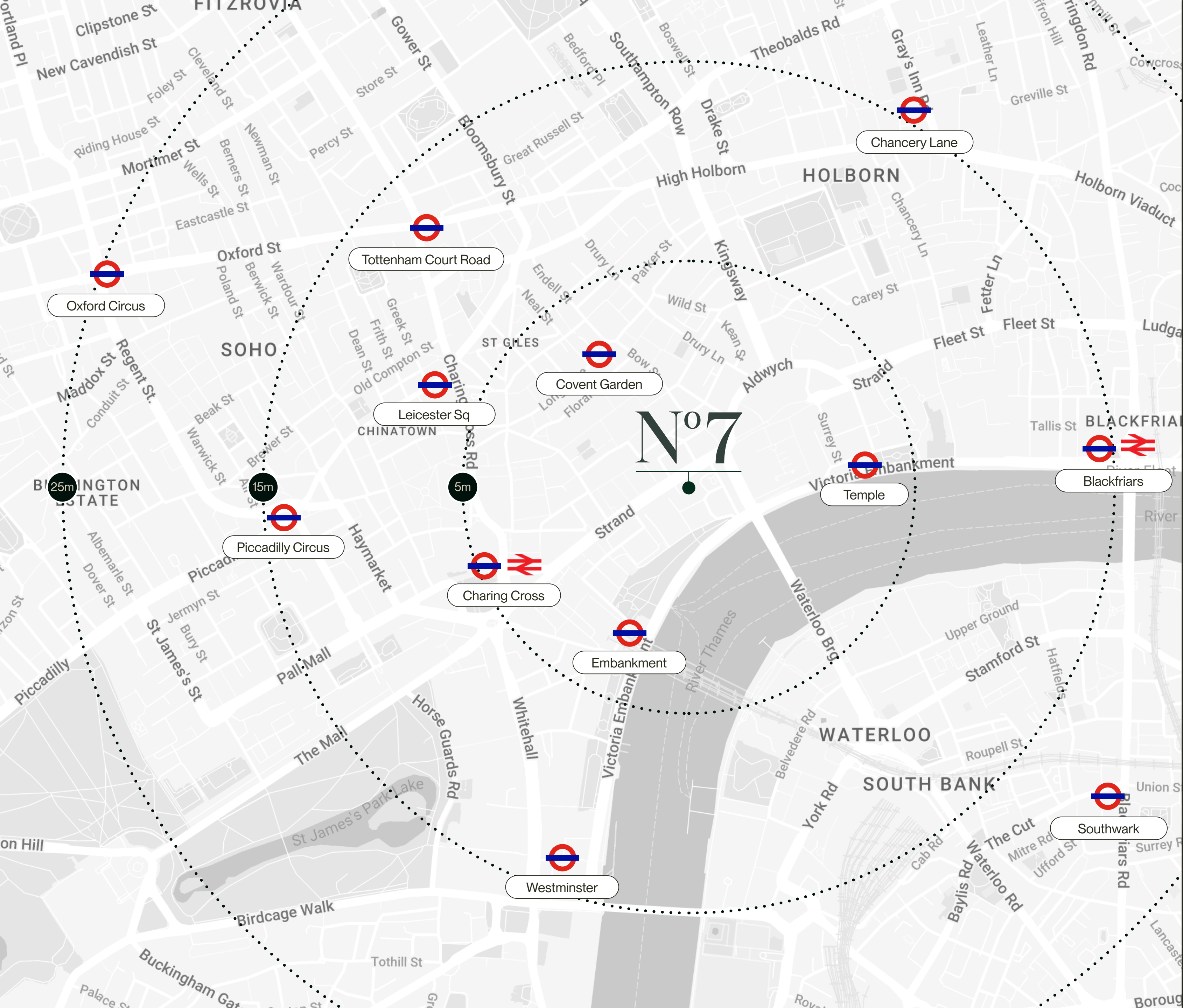
- 1 One Aldwych
- 2 ME London
- 3 The Savoy
- 4 Corinthia
- 5 St Martins Lane
- 6 The NoMad Hotel

## CULTURE

- 1 Royal Opera House
- 2 180 The Strand
- 3 Somerset House
- 4 Courtauld Gallery
- 5 South Bank Centre
- 6 Adelphi Theatre
- 7 National Gallery / National Portrait Gallery

## OCCUPIERS

- 1 Pearson
- 2 Spotify
- 3 Conde Nast
- 4 The Economist
- 5 PWC
- 6 Bain & Co
- 7 Coutts
- 8 Michael Page
- 9 Sharkmob
- 10 Darktrace



# CONNECTION

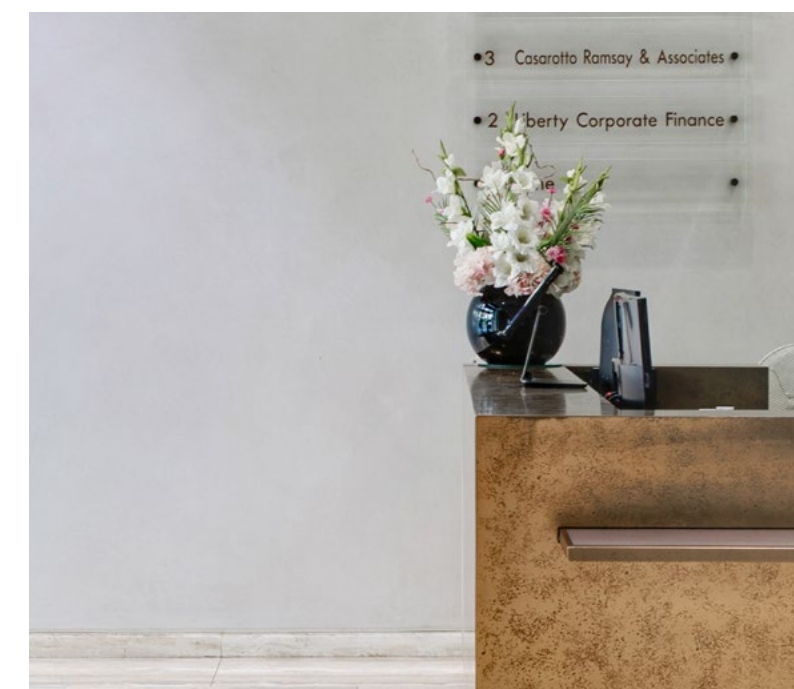
With four major stations just moments away, 7 Savoy Court places the West End, the City and Canary Wharf within easy reach, offering exceptional connectivity from one of London's most central locations.

Station	Line(s)	Walk Time
Embankment	<ul style="list-style-type: none"> <li><span style="color: green;">●</span> District</li> <li><span style="color: yellow;">●</span> Circle</li> <li><span style="color: grey;">●</span> Northern</li> <li><span style="color: orange;">●</span> Bakerloo</li> </ul>	4 mins
Charing Cross	<ul style="list-style-type: none"> <li> National Rail</li> <li><span style="color: grey;">●</span> Northern</li> <li><span style="color: orange;">●</span> Bakerloo</li> </ul>	4 mins
Covent Garden	<ul style="list-style-type: none"> <li><span style="color: blue;">●</span> Piccadilly</li> </ul>	5 mins
Temple	<ul style="list-style-type: none"> <li><span style="color: green;">●</span> District</li> <li><span style="color: yellow;">●</span> Circle</li> </ul>	8 mins
Leicester Square	<ul style="list-style-type: none"> <li><span style="color: grey;">●</span> Northern</li> <li><span style="color: blue;">●</span> Piccadilly</li> </ul>	9 mins
Tottenham Court Road	<ul style="list-style-type: none"> <li><span style="color: grey;">●</span> Northern</li> <li><span style="color: purple;">●</span> Elizabeth</li> </ul>	12 mins
<b>Destinations</b>		<b>Journey</b>
Southbank		10 mins
London City Airport		31 mins
Heathrow Airport		42 mins

# DEFINED BY DETAILS

Behind the historic façade sits a thoughtfully refurbished workplace designed for modern business. With the opportunity to curate a bespoke fit out, 7 Savoy Court provides a flexible canvas within one of London's most established and recognisable addresses.

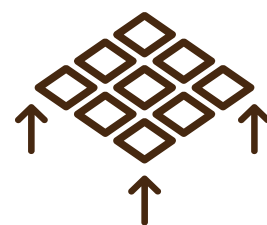
Characterful architecture, exposed structural detailing and modern infrastructure combine to create a Grade A office space with the presence and practicality expected of a best-in-class workplace.



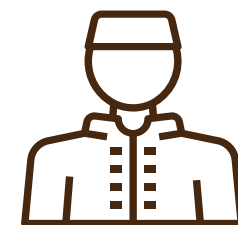
## BUILDING SPECIFICATION



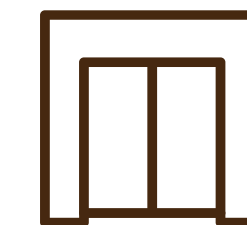
EPC A  
Rating



Fully accessible  
metal tile raised floor



On site  
commissionaire



Three  
passenger lifts



New showers  
on all floors



New VRF  
Air Conditioning



Historic  
Building



Occupational  
Density 1:10m<sup>2</sup>



24 hour access  
and security



New LED  
Lighting



New Private  
WC



Secure cycle  
storage

# CONTACT



**ALEX KEMP**

+44 (0)7881 610 962  
akemp@hanovergreen.co.uk

**GEORGE BREWSTER**

+44 (0)7745 606 874  
gbrewster@hanovergreen.co.uk

**ZOE RAMSAY**

+44 (0)7799 821 910  
zramsay@hanovergreen.co.uk

**7SAVOYCOURT.COM**

