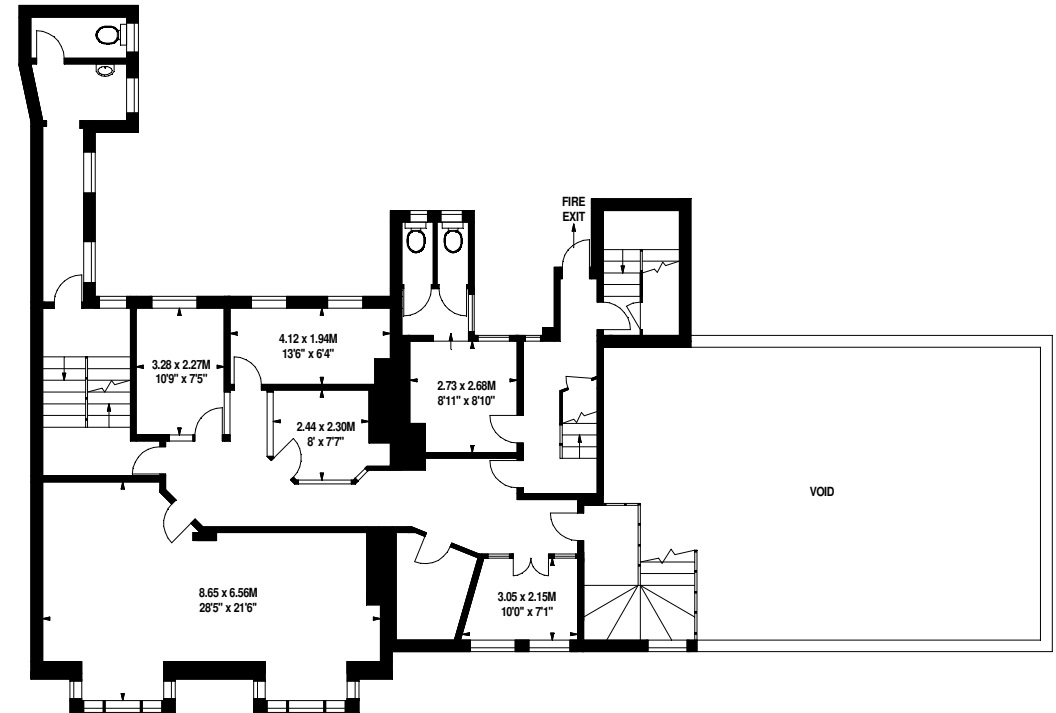
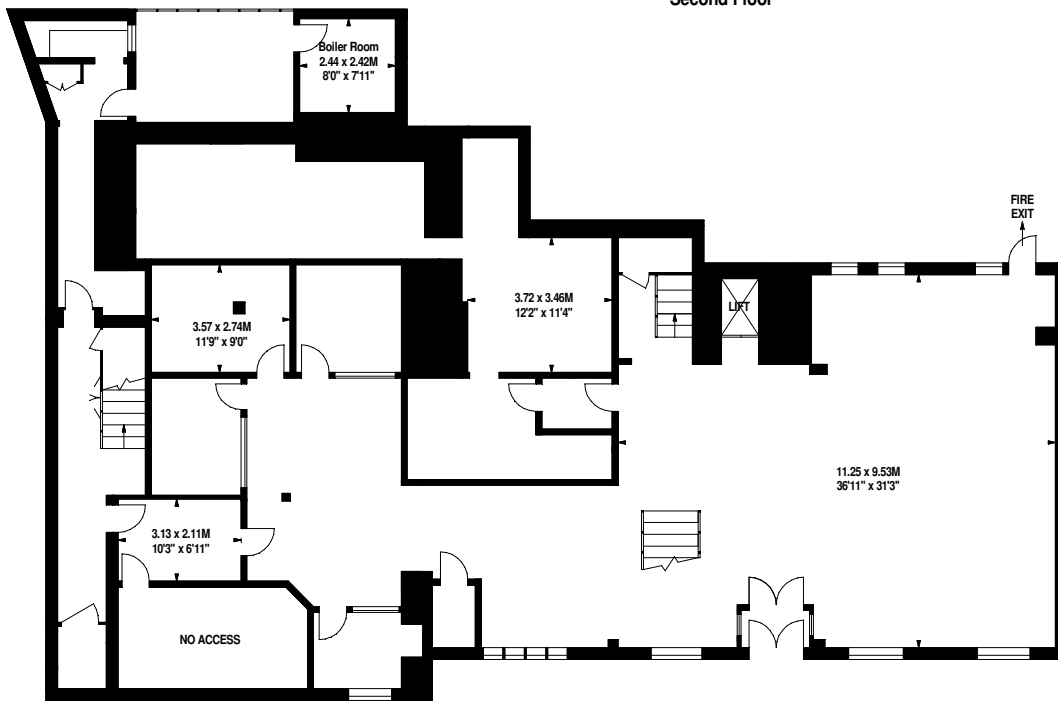
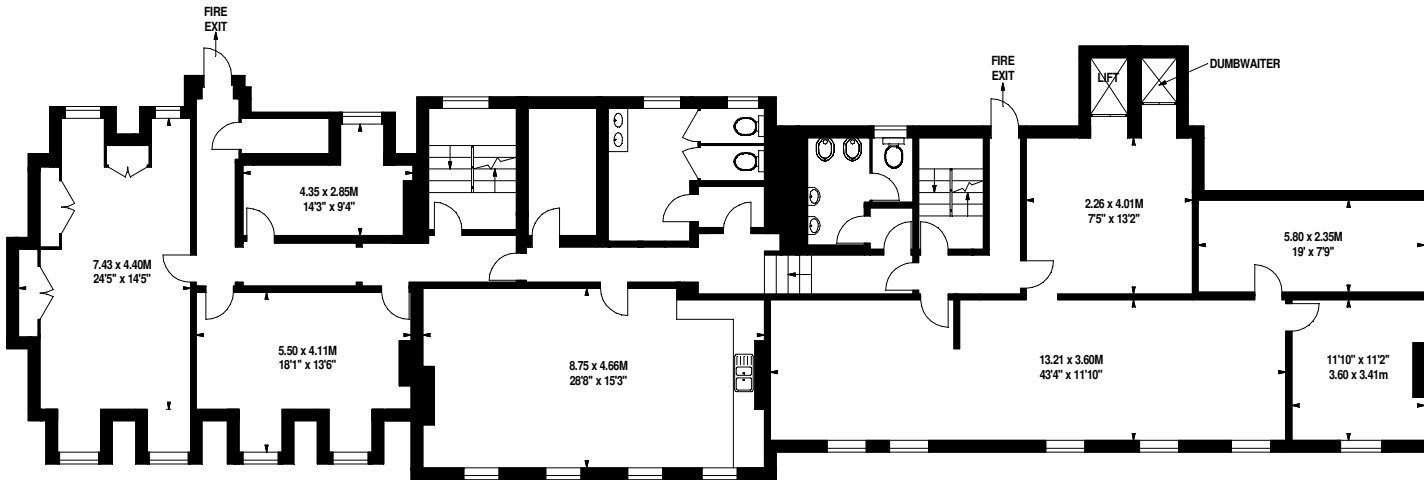


**Lloyds, St. Thomas Square,
Newport, Isle Of Wight, PO30**

Approximate Gross Internal Area 744 sq m / 8008 sq ft
Including No Access Room, Lifts, and Dumbwaiters

Excluding Boiler Room of Approximately 6 sq m / 65 sq ft
Excluding Void



Floor Plan produced for Chesters Harcourt by Mays Property Marketing ©. Tel 020 3397 4594
Illustration for identification purposes only. Not to scale.
Orientation, measurements, and other details are approximate and for guidance only,
purchasers should verify details independently.
Where a room has a sloping ceiling the dotted line marks 1.50M height,
and all measurements shown are at floor level.