



STRETTONS
EST 1931

Cordy House, 87-95 Curtain Road, Shoreditch, London, EC2A 3BS

TO LET

Office

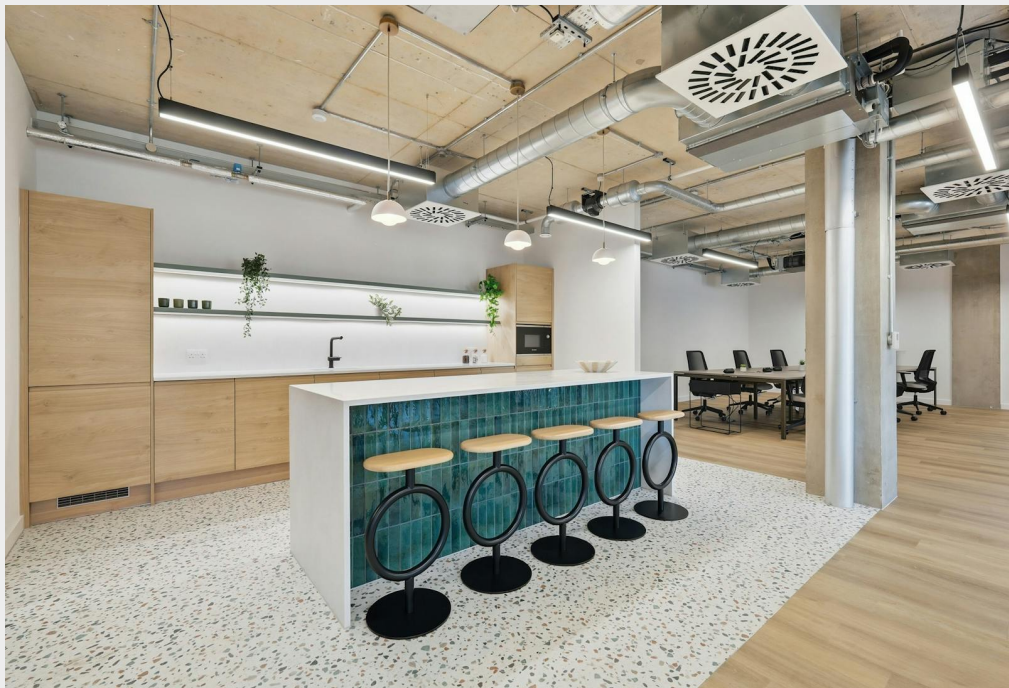
3,181 sq ft / 295.5 sq m

£59.50 per sq ft

Best in class fully fitted Shoreditch office complete with 3 x private meeting rooms and 36-50 desks available



- New architecturally designed office building
- Full fitted and furnished
- Exposed air-conditioning system
- Excellent natural light throughout
- Bike storage
- Ground floor reception and concierge

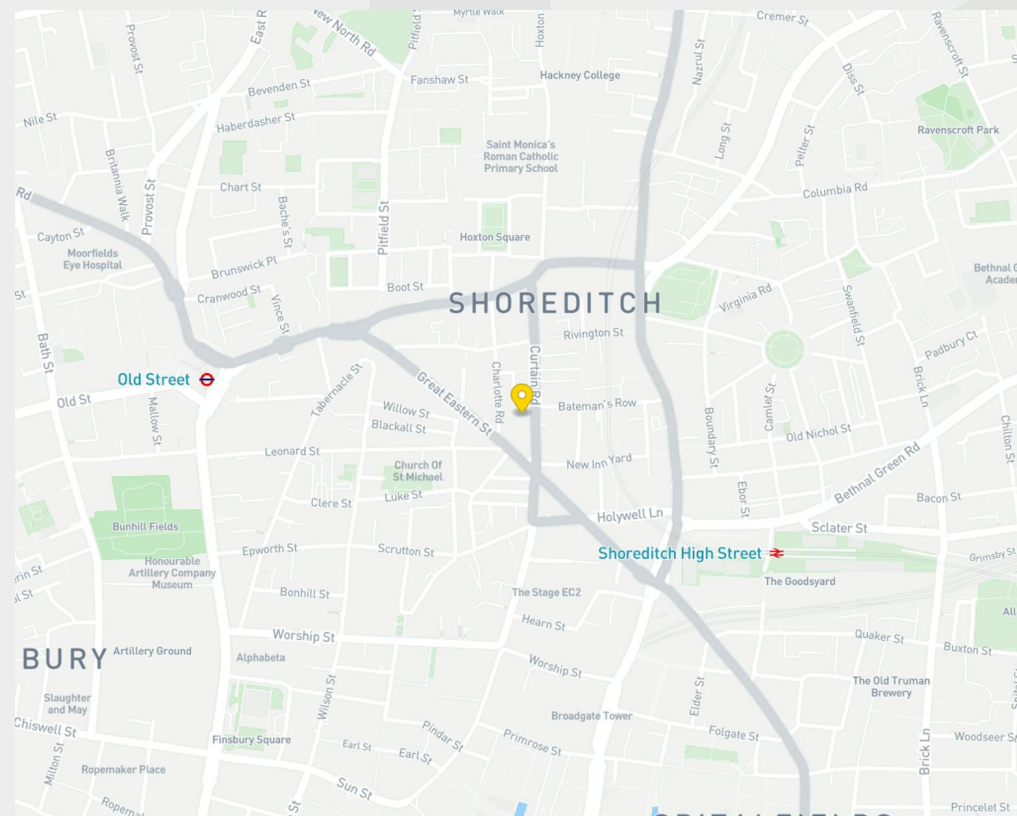


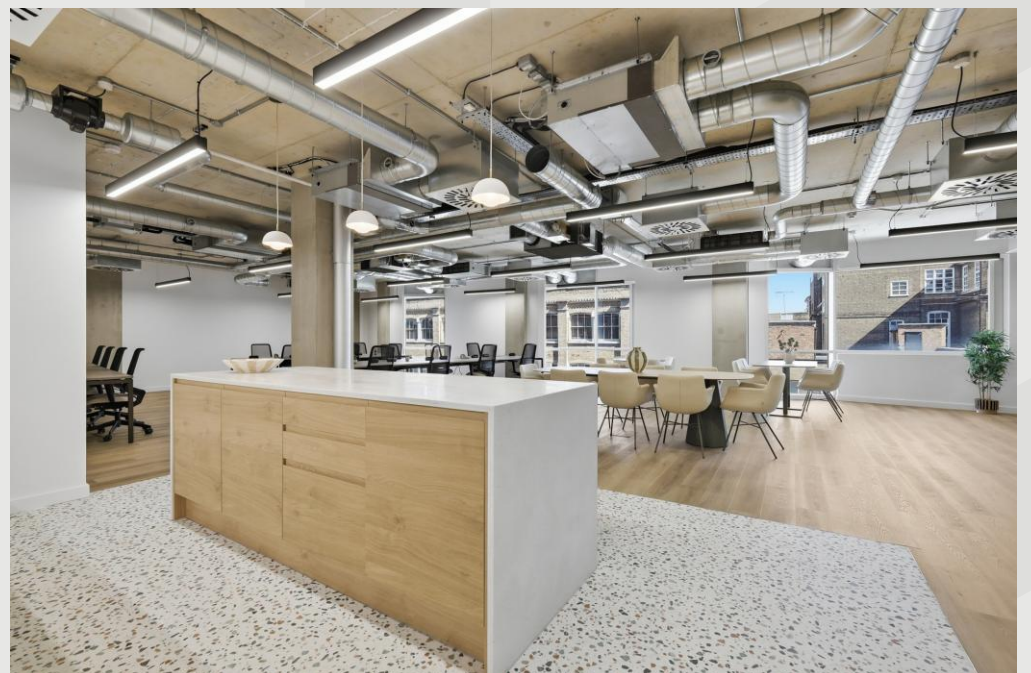
Description

Cordy House offers a fully fitted workspace environment in the heart of Shoreditch — a district defined by creativity and cultural energy. Designed by Academy Architects, the building has been reimagined for modern business while honouring its past as one of London's most iconic creative venues. It's both grounded and inspiring — where craftsmanship and authenticity shine. Light-filled, flexible floors provide design-led workspaces that foster productivity, with exposed structures and refined finishes.

Location

Bordering the City, Clerkenwell and Bethnal Green, Shoreditch is a thriving hotspot where culture, food, drink, art, fashion and music collide. Once a commercial district, it has transformed into a dynamic hub of creativity, home to young media, design and fashion companies. With its buzz of bars, restaurants and galleries, Shoreditch is a true metropolis of modern style and energy.





Accommodation / Availability

Unit	Sq ft	Rent (sq ft)	Rates Payable (sq ft)	Service Charge (sq ft)	Total month	Availability
2nd - Floor	4,293	£59.50	£19	£9.76	£31,575.02	Under Offer
3rd - Floor	3,181	£59.50	£19	£9.76	£23,396.26	Available

Tenure

New Lease

EPC

B

VAT

Applicable

Configuration

Fitted

Contacts

Tom Schwier
07583 037 559
tom.schwier@strettons.co.uk

Joel Barnes
07974 625 109
joel.barnes@strettons.co.uk



Further Information

[View on Website](#)

Strettons and their clients give notice that: 1. They are not authorised to make or give any representations or warranties in relation to the property either here or elsewhere, either on their own behalf or on behalf of their client or otherwise. They assume no responsibility for any statement that may be made in these particulars. These particulars do not form part of any offer or contract and must not be relied upon as statements or, representations of fact. 2. Any areas, measurements or distances are approximate. The text, photographs and plans are for guidance only and are not necessarily comprehensive. It should not be assumed that the property has all necessary planning, building regulation or other consents and the Agents have not tested any services, equipment or facilities. Purchasers must satisfy themselves by inspection or otherwise. Generated on 14/04/2026