

maybrook house

Queensway, Halesowen,
West Midlands B63 4AH



Grade 'A' offices – To Let
670sq ft – 4,010sq ft

First impressions last.

The right impression is essential for any business and Maybrook House delivers in every way.

It offers quality accommodation in a prominent location and a great impression on employees and clients alike.

LOCATION

The property is located in the heart of Halesowen town centre, directly opposite the new bus station and secure multi-storey car park. It's central location means that all town centre amenities are within easy walking distance.

Halesowen is situated in the heart of the Black Country with Cradley Heath 3 miles to the north, Stourbridge 5 miles to the West and Birmingham 8 miles to the east. J3 of the M5 is approximately one mile to the west which gives access to the National and Midland's motorway network.



Suite 4.1

DESCRIPTION

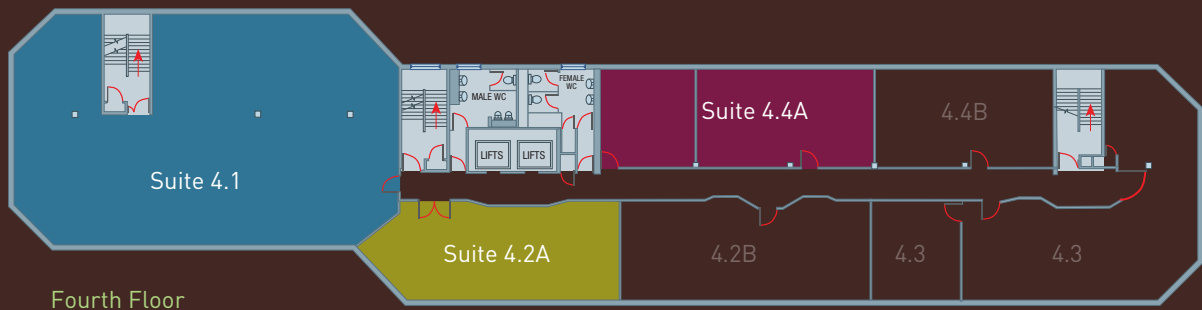
A brand new refurbishment with fully refurbished common areas and extensive on-site car parking:-

- Refurbished open plan offices
- Contemporary new reception with reception desk and waiting areas & feature lighting
- Comforting cooling
- LED lighting
- Suspended ceilings
- Double glazing throughout
- EPC:- A
- CCTV cameras covering estate

ACCOMMODATION

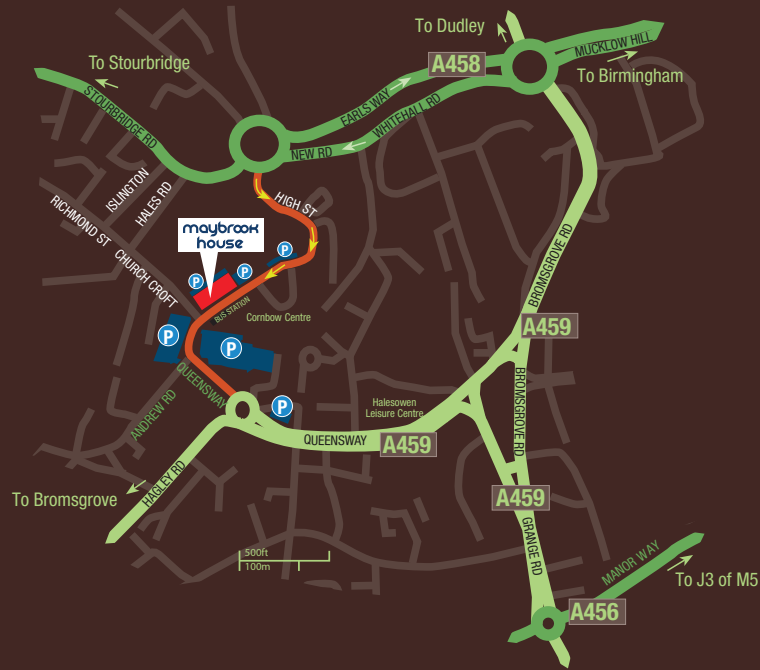
The available suites on the fourth floor can be leased as a whole or as separate offices.

Fourth floor	Sq ft	Sq m	EPC Rating
Suite 4.1	2,500	232	A
Suite 4.2A	670	62	A
Suite 4.4A	840	78	A



maybrook house

Queensway, Halesowen, West Midlands B63 4AH



Sat Nav: B63 4AH

Travel times from Maybrook House

	Distance	Time
Halesowen Town Centre	0	0
Cornbow Centre	60 metres	1 min
Halesowen Bus Station	30 metres	1 min
M5 Junction 3	1 mile	1mins
Merry Hill Shopping Centre	5 miles	8 mins

More Information

Edward Siddall-Jones
 DD: +44 121 638 0500
 M: +44 7803 571891
 E: edward@siddalljones.com

Sophie Froggatt
 DD: +44 121 638 0500
 M: +44 7842 013854
 E: sophie@siddalljones.com



IMPORTANT: These brief particulars have been prepared as agents for our clients and are intended as a convenient guide to supplement an inspection or survey. Their accuracy is not guaranteed. They contain statements of opinion and in some instances we have relied on information provided by others. You should verify the particulars on your visit to the property and the particulars do not obviate the need for a full survey and all the appropriate enquiries. Accordingly, there shall be no liability as a result of an error or omission in the particulars or any other information given. June 2026.