

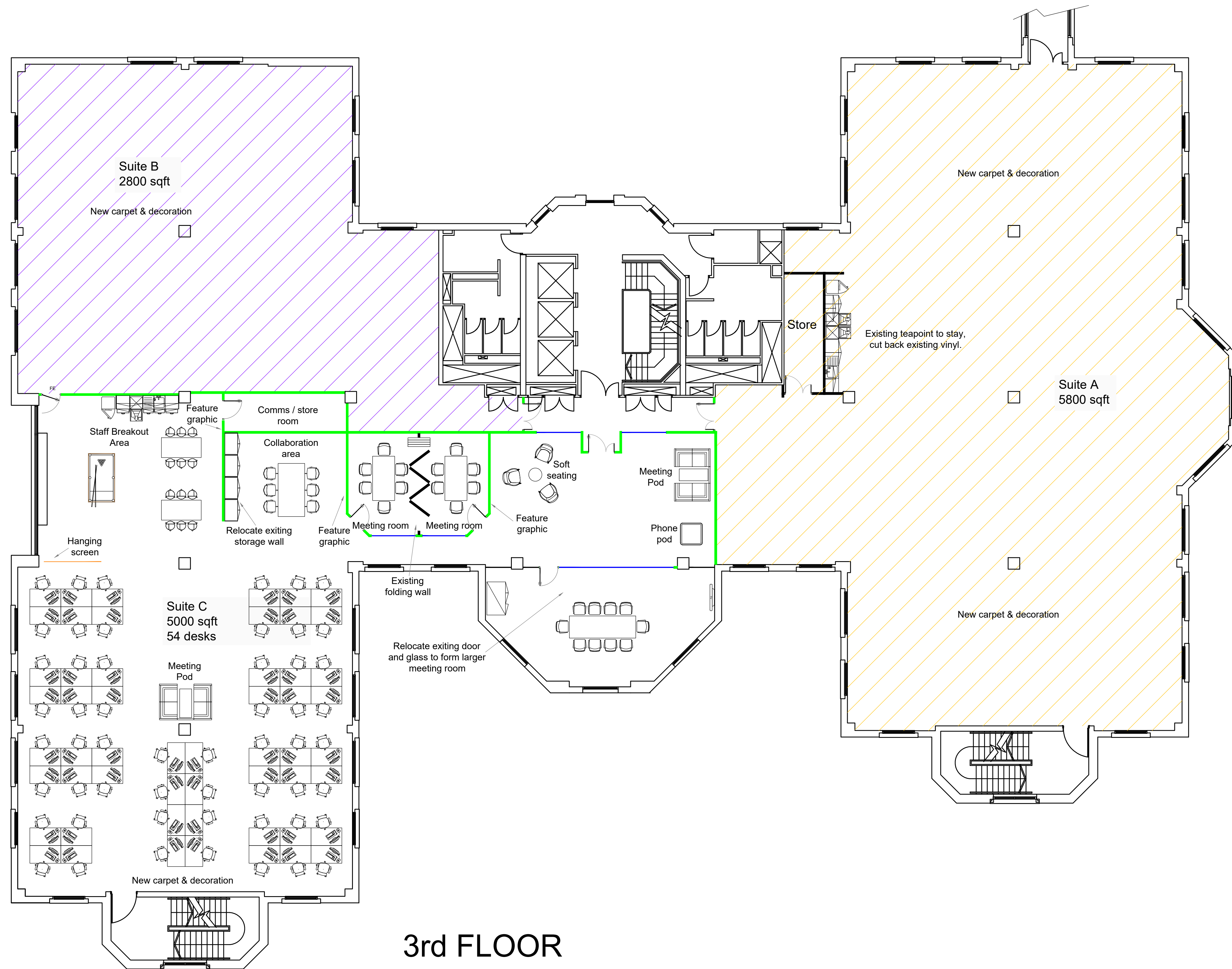
©
This drawing is the property of OFFICE INTERIORS UK. It may not be reproduced in part or in whole without the written permission of a Director.
Do not scale off this drawing
All dimensions to be checked on site before work commences. If in doubt, Ask!

Partition Key

- New 75mm metal studwork with single skin plasterboard
- Existing 75mm metal studwork with single skin plasterboard
- New singled glazed partitioning system with silicone/dry joints
- Existing singled glass partitioning system with silicone/dry joints

New solid door Existing solid door

Revisions:
 Rev A - 15.03.2022 - Meeting rooms added
 Rev B - 29.03.2022 - Fitted suite changed to Suite A
 Rev C - 20.04.2022 - Fitted suite changed to 3rd floor



3rd FLOOR

uk office Interiors
 info@officeinteriorsuk.co.uk

Project
WESTCORE
 Kennet Place
 Reading

Drawing Title
**3rd Floor
 GENERAL
 ARRANGEMENT**

Scale	Date	Checked	Drawn By
1:100@A1	JAN 22	---	ER

Drawing Number	Revision
22006 / GA / 302	C