

TO LET

Modern Trade Counter / Retail Units

# UNITS 5, 13 & 14 WINCHESTER TRADE PARK

EASTON LANE, WINCHESTER, SO23 7FA

**3,017 - 9,056 FT**  
280 - 841 SQ M

**HARGREAVES**  
PROPERTY INVESTMENT  
& DEVELOPMENT

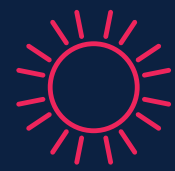
[www.hargreaves.co.uk](http://www.hargreaves.co.uk)







CLOSE TO  
CITY  
CENTRE



GLAZED  
FRONTAGE



PROMINENT  
ESTABLISHED  
TRADE PARK  
LOCATION



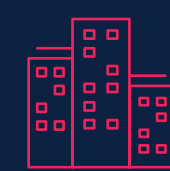
ELECTRICALLY  
OPERATED UP AND  
OVER DOORS  
(W 3.6M X H 4.8M)



CLOSE  
PROXIMITY TO  
JUNCTION 9  
M3



3 PHASE  
POWER



MIN EAVES  
HEIGHT 5.77M



6 SPACES PER UNIT  
& COMMUNAL  
PARKING

PROPERTY  
DETAILS

SCHEDULE OF ACCOMMODATION

	SQ FT	PARKING
UNIT 5	3,022	6 Spaces
UNIT 13	3,017	6 Spaces
UNIT 14	3,017	6 Spaces

UNIT 13 & 14 AVAILABLE SEPERATELY OR TOGETHER

The properties comprise refurbished modern, mid-terrace trade counter units, of steel portal frame construction, with electrically operated up and over loading door and glazed entrance. The Estate benefits from additional communal parking.



TRADE COUNTER/RETAIL UNITS TO LET | WINCHESTER TRADE PARK



WINCHESTER TRADE PARK  
Easton Lane, Winchester, SO23 7FA

PROPERTY  
LOCATION

Hampshire’s position as a key transport hub and major gateway to global markets is unrivalled, and provides businesses with easy access to and from London, three international airports (including Heathrow) and two major ports. With a combination of three historic cities, two national parks and miles of coastline, Hampshire has it all.

The units have direct visibility from the busy arterial road into Winchester City Centre. Both the M3 and the A34 are within 0.4 miles providing easy onward travel to London, the Midlands and the North. This prime location provides maximum exposure and accessibility, making it an ideal choice for businesses seeking a prominent presence in thriving commercial hub.

CONNECTIONS

	Miles	Time
M3 JUNCTION 9	0.4	3 mins
A34	0.4	3 mins
WINCHESTER	1.2	10 mins
SOUTHAMPTON	15	27 mins
LONDON	71	1hr 50 mins

 SAT NAV: BN16 3LF  
///fermented.labs.erase



TRADE COUNTER/RETAIL UNITS TO LET | WINCHESTER TRADE PARK



# WINCHESTER TRADE PARK

Easton Lane, Winchester, SO23 7FA

## FURTHER INFORMATION

**TERMS:** New effective FRI lease on terms to be agreed

**VAT:** All prices, premiums and rents etc are quoted exclusive of VAT at the prevailing rate.

**LEGAL COSTS:** Each party is to be responsible for their own legal costs incurred in any transaction.

**EPC:** To be reassessed.

**BUSINESS RATES:** For business rating information please visit the Valuation Office Agency website [www.voa.go.uk](http://www.voa.go.uk)

**PLANNING:** These units have B1(c), B2, B8 and A1 (limited to a defined range of goods) Use Class.

**PLANNING REFERENCE NO.** 12/01435/FUL

## AGENT DETAILS

Viewing strictly by prior appointment



**Luke Mort**  
M: 07591 384236  
E: [lmort@lsh.co.uk](mailto:lmort@lsh.co.uk)

**Dan Rawlings**  
M: 07702 809192  
E: [drawlings@lsh.co.uk](mailto:drawlings@lsh.co.uk)



**Alex Gauntlett**  
M: 07584 657 826  
E: [agauntlett@vailwilliams.com](mailto:agauntlett@vailwilliams.com)

**Nik Cox**  
M: 07870 557410  
E: [ncox@vailwilliams.com](mailto:ncox@vailwilliams.com)

**OWNED & MANAGED BY:**



**01903 777777**

**[hargreaves.co.uk](http://hargreaves.co.uk)**

Misrepresentation Act: Hargreaves and their agents give notice that these particulars are set out as a general outline only for the guidance of intending Purchasers or Lessees and do not constitute any part of an offer or contract. Details are given without any responsibility and any intending Purchasers, Lessees or Third Party should not rely on them as statements or representations of fact, but must satisfy themselves by inspection or otherwise as to the correctness of each of them. No person in the Hargreaves or their agents has any authority to make any representation or warranty whatsoever in relation to this property. Brochure by Virtualoom.







WINCHESTER TRADE PARK  
Easton Lane, Winchester, SO23 7FA

## OUR COMMITMENT TO OUR CUSTOMERS

Hargreaves, established 60 years ago, is a family-owned property investment and development business. Our properties are concentrated along the south coast and increasingly across the wider southeast. As a long-term investor, we take pride in what we own and in our responsibilities within the communities in which we operate. We have three core principles that we uphold:

- Build long term relationships with our customers and help them achieve their goals by providing high quality real estate solutions to suit their needs.
- Deliver a best-in-class property management service from our locally based offices in Rustington.
- Execute on our commitment to our environmental and social goals to achieve better solutions for people and the local environment.

For full details please visit:

[www.hargreaves.co.uk/about-us](http://www.hargreaves.co.uk/about-us)



Rustington House, Worthing  
Road, Rustington, West Sussex,  
BN16 3PS

01903 777777



TRADE COUNTER/RETAIL UNITS TO LET | WINCHESTER TRADE PARK

