

PACIFIC HOUSE

70 Wellington St Glasgow G2 6UA

TO LET
FULLY FITTED
CITY CENTRE
WORKSPACE

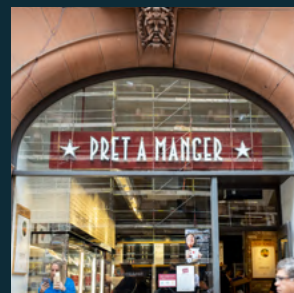
Part 3rd Floor 3,399 sq ft (315.78 sq m)



LOCATION


Pacific House is located within the true heart of Glasgow city centre with a wealth of amenities on the doorstep.

Glasgow Central and Queen Street Railway stations are less than a 10 minute walk away, whilst St Enoch Subway Station is around the corner providing easy access to the West End and greater Glasgow.



PACIFIC HOUSE

70 Wellington St Glasgow G2 6UA

 **Anderston Station**

BOTHWELL STREET

ST VINCENT STREET

HOPE STREET

UNION STREET

 **Central Station**

ARGYLE STREET

BUCHANAN STREET

 **St Enoch Subway**

DESCRIPTION

Pacific House offers fully fitted city centre workspace, positioned within the heart of Glasgow with everything an occupier needs to set up and get underway.



PACIFIC HOUSE

70 Wellington St Glasgow G2 6UA



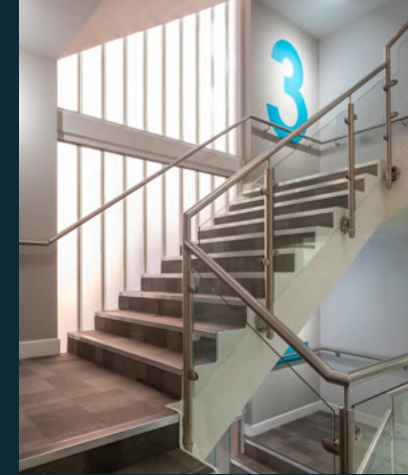
ACCOMMODATION

The part 3rd floor extends to
3,399 sq ft (315.78 sq m).



PACIFIC HOUSE

70 Wellington St Glasgow G2 6UA



SPECIFICATION

High-quality existing
fit-out in situ

Striking double height
glass reception

Air Conditioning

Modern lighting

Suspended ceiling

Raised access floor

2 passenger lifts

Dedicated WCs
and showers

Commissionaire
manned entrance

Car parking spaces





PACIFIC HOUSE

70 Wellington St Glasgow G2 6UA

TERMS

The 3rd floor is available by way of an assignment/sub lease, with the head lease expiring **14th February 2026**.

The passing rent is **£56,933 per annum**.

FURTHER INFORMATION

For further information or to arrange a viewing please contact:

ALEX MACKAY

alex.mackay@eu.jll.com

0141 567 6639



Disclaimer JLL for themselves and for the vendors or lessors of this property whose agents they are, give notice that:- a. the particulars are set out as a general outline only for guidance and do not constitute, nor constitute part of, an offer or contract; b. all descriptions, dimensions, references to condition and necessary permissions for use and occupation, and other details are believed to be correct, but any intending purchasers, tenants or third parties should not rely on them as statements or representations of fact but satisfy themselves that they are correct by inspection or otherwise; c. no person in the employment of JLL has any authority to make or give any representation or warranty whatever in relation to the property; d. Any images may be computer generated. Any photographs show only certain parts of the property as they appeared at the time they were taken. e. This correspondence is expressly subject to completion of formal legal missives in accordance with Scots Law. October 2022.