

**fisher  
german**

# Unit 16A, Buntsford Park Road

Leasehold  
Industrial Unit

Buntsford Hill Business Park, Bromsgrove, B60 3DX

7,306 Sq Ft (679.03 Sq M)



**To Let | £65,780 pa**



## Amenities



Car Parking



Loading Doors  
x 2



Yard

## Unit 16A, Buntsford Park Road

7,306 Sq Ft (679.03 Sq M)

### Description

The property comprises a modern industrial unit of steel portal frame construction, featuring part brick/block elevations with steel profile cladding and a pitched steel profile roof incorporating translucent roof lights.

To the front of the unit, there is a concrete hardstanding area designated for loading and unloading, along with ancillary car parking for approximately 8–10 vehicles. Additional parking may be available by separate negotiation.

Internally, the property offers an L-shaped workshop/warehouse space, accessed via two electronically operated doors: a roller shutter measuring 4.25m (W) x 4.25m (H) and a sectional door measuring 4.2m (W) x 4.1m (H). The warehouse benefits from a solid concrete floor, three-phase electricity supply, roof lights, mezzanine lighting and WC facilities.

Adjacent to the warehouse is a two-storey office block providing a mix of open-plan and cellular office accommodation with double glazing, air conditioning, carpet, suspended ceilings, lighting and wall trunking, complete with kitchen and WC amenities.

## Location

The property occupies a prominent position on Buntsford Park Road, conveniently located on the outskirts of Bromsgrove town centre and in close proximity to Morrisons Supermarket.

It benefits from excellent transport connectivity, with easy access to the A38, A448, and M5 motorway. Bromsgrove railway station is just 1.1 miles away, offering further regional and national links.

Birmingham city centre lies approximately 13 miles to the north, while Worcester city centre is around 10 miles to the south.

### Locations

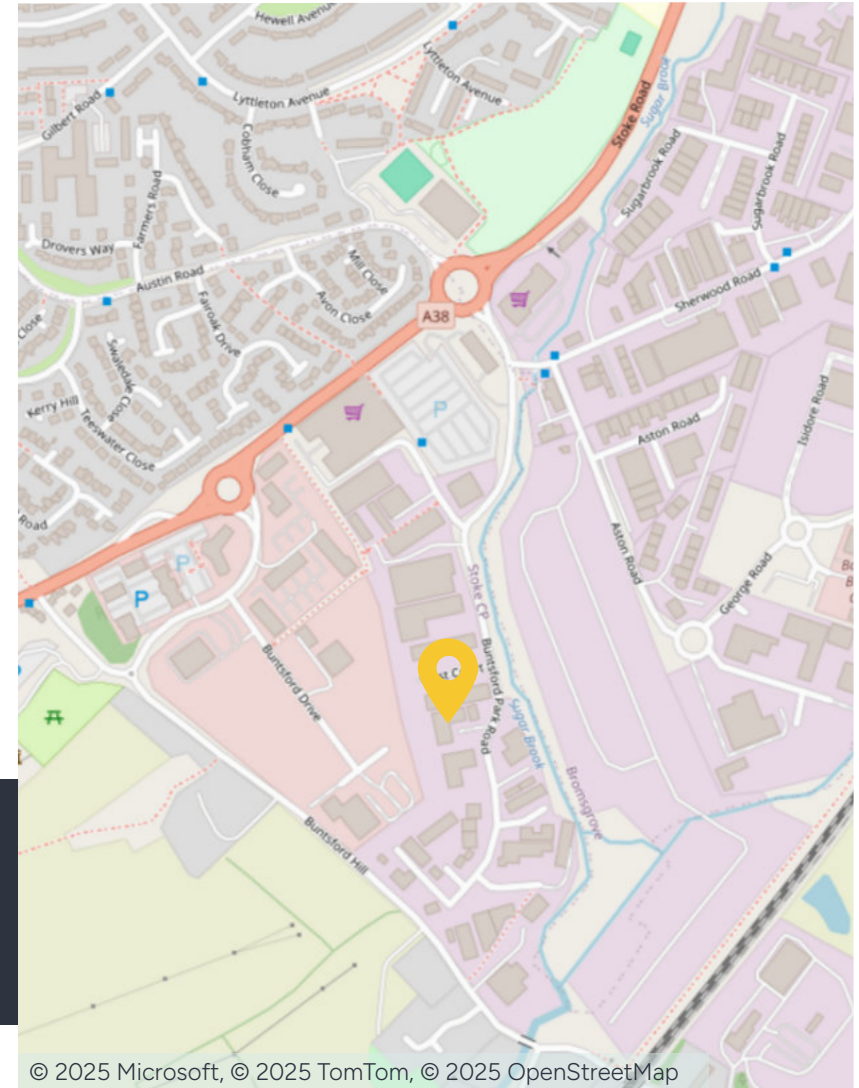
Bromsgrove: 2 miles  
Worcester: 15.5 miles  
Birmingham: 26.7 miles

### Nearest station

Bromsgrove: 1.5 miles

### Nearest airport

Birmingham International: 22 miles



## Accommodation

Description	Sq Ft	Sq M
Warehouse	5,788	538.00
Ground Floor Offices	1,059	98.42
First Floor Offices	459	42.61
<b>Total</b>	<b>7,306</b>	<b>679.03</b>
Mezzanine	564	52.43



## Further information

### Lease Terms

The property is available to let on a new full repairing and insuring lease.

### Rental

£65,780 per annum exclusive, Subject to Contract.

### Business Rates

Occupiers will be responsible for paying business rates directly to the local authority.

Rateable Value: £48,000 (1 April 2026 to Present)

Rates Payable: £20,736

2026/2027 Multiplier 43.2p.

### Services

We confirm we have not tested any of the service installations and any occupiers must satisfy themselves as to the state and condition of such items.

### EPC

The EPC rating TBC.

### Insurance

The landlord will take out annual buildings insurance with a recognised insurance company, the cost of which will be apportioned and reimbursed by the tenant.

### Legal Costs

Each party to be responsible for their own legal costs incurred in this transaction.

### Fixtures & Fittings

The premises were previously used for vehicle servicing and MOT testing and are equipped with existing fixtures and fittings including vehicle ramps, a rolling road, and a fume extraction system. Some or all of this equipment can remain on-site, subject to a separate rental agreement.

### References/Deposit

The successful tenant will need to provide satisfactory references for approval. The landlord may also request a deposit.

### Anti Money Laundering

The successful tenant will be required to submit information to comply with Anti Money Laundering Regulations.

### VAT

Unless otherwise stated, all prices and rents quoted are exclusive of Value Added Tax (VAT). Any intending tenant should satisfy themselves independently as to VAT in respect of this transaction.

### Viewings

Strictly by prior arrangement with the sole agents.



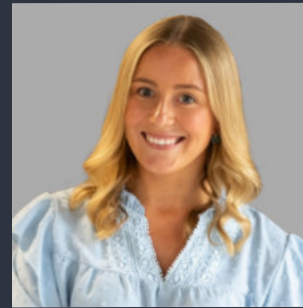
## Contact us



**Mike Price**

07909 596 051

[mike.price@fishergerman.co.uk](mailto:mike.price@fishergerman.co.uk)



**Sophie Newton**

07977 465 882

[sophie.newton@fishergerman.co.uk](mailto:sophie.newton@fishergerman.co.uk)



**James Allison**

07974 519 507

[james.allison@fishergerman.co.uk](mailto:james.allison@fishergerman.co.uk)

Please note: Fisher German LLP and its Joint Agents give notice that: 1. They have no authority to make or give any representation or warranty on any property whether on their own behalf or on behalf of their clients or otherwise. 2. They do not owe any duty of care to you and assume no responsibility for any statements, representations, warranties or otherwise made in the particulars and you should not rely on those in the particulars. 3. The particulars are produced in good faith are set out as a general guide only and do not constitute or form an offer or a contract or part thereof. 4. Any photographs, descriptions, plans, measurements, distances and any other details in the particulars are approximate estimates only taken as the property appeared at the time and should not be relied upon as factually accurate. 5. Fisher German assumes prospective purchasers/tenants have carried out inspections to satisfy themselves that the information in the particulars is correct.

Particulars dated April 2026. Photographs dated March 2026.



This brochure is fully recyclable