



# EALING GATEWAY

26-30 UXBRIDGE ROAD | EALING  
LONDON W5





Newly refurbished offices in the heart of Ealing  
Ground and Fifth floors from 4,299 to 60,981 sq ft (399 - 5,665 sq m)



Ealing Gateway has undergone a comprehensive refurbishment of the common parts together with the ground and fifth floor office suites. The building benefits from a newly remodelled and expanded reception to include breakout areas for use of our occupiers, 4 new passenger lifts, newly constructed shower and changing facilities and secure covered cycle storage facilities.

The refurbishment sets a new benchmark for the Ealing market and, alongside Elizabeth Line connections, will see the building offer a unique proposition to occupiers looking for high quality office accommodation with excellent transport links in a town centre location.





As part of the comprehensive repositioning of the ground floor of the building a new fully connected business lounge has been created for the use of all occupiers.

Adjacent to the business lounge a brand new purpose built shower and changing block has been constructed and offers occupiers a modern and spacious facility which will include lockers and drying area.







## Getting there faster

With close proximity to local transport hubs, Ealing Gateway is extremely well connected, making Central London and Heathrow reachable within minutes. Ealing's connectivity will be further enhanced with the arrival of the Elizabeth Line in November, transforming journey times overnight.



DISTRICT AND CENTRAL LINES



BOND STREET 11 MINS

HEATHROW AIRPORT 15 MINS

SLOUGH 20 MINS

STRATFORD 27 MINS



PADDINGTON 8 MINS

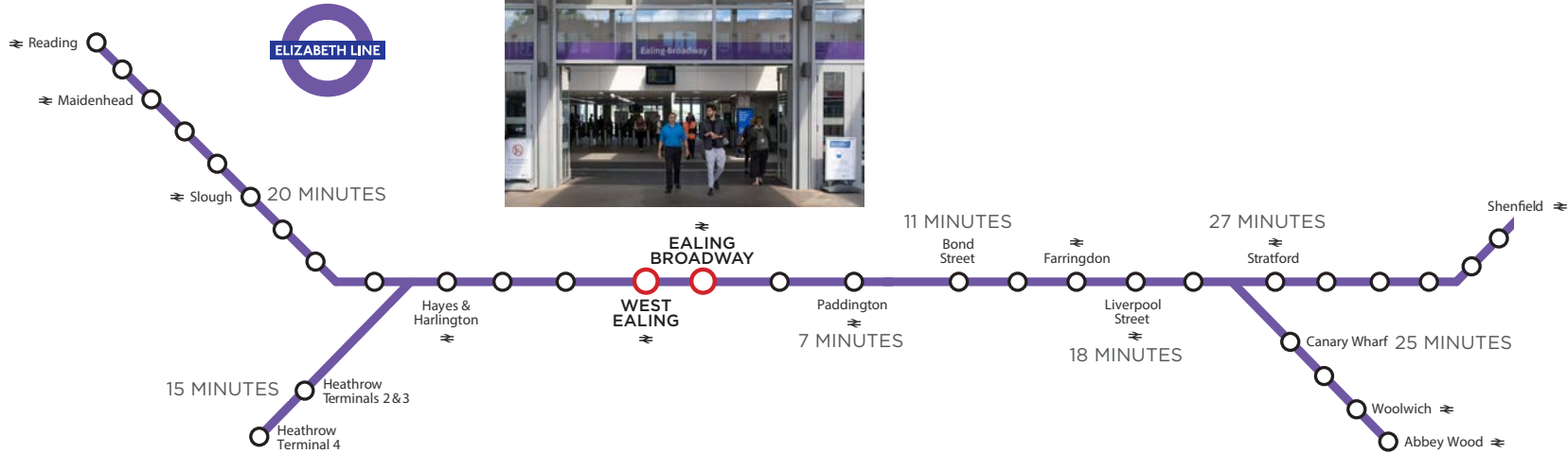
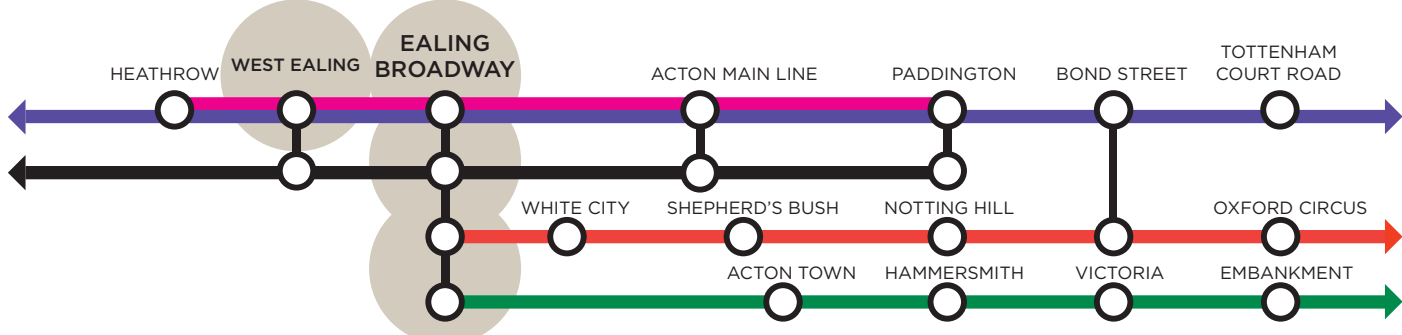
HEATHROW 15 MINS

READING 43 MINS



HEATHROW INTERNATIONAL AIRPORT

Heathrow Connect Rail Elizabeth Line Central Line District Line



Ealing has a wealth of amenity on its doorstep with the Ealing Broadway Shopping Centre offering a wide array of high street and top branded shops and a variety of fine eateries and cafes. Recently this offer has been further improved with the exciting addition of Dickens Yard which has circa 100,000 sq ft of retail housing brands such as Jigsaw, Gymbox, Gails Bakery and Brewdog. In 2022 the brand new Filmworks scheme opened with more excellent retail space, food and beverage offerings and a new independent 8 screen cinema on the way.



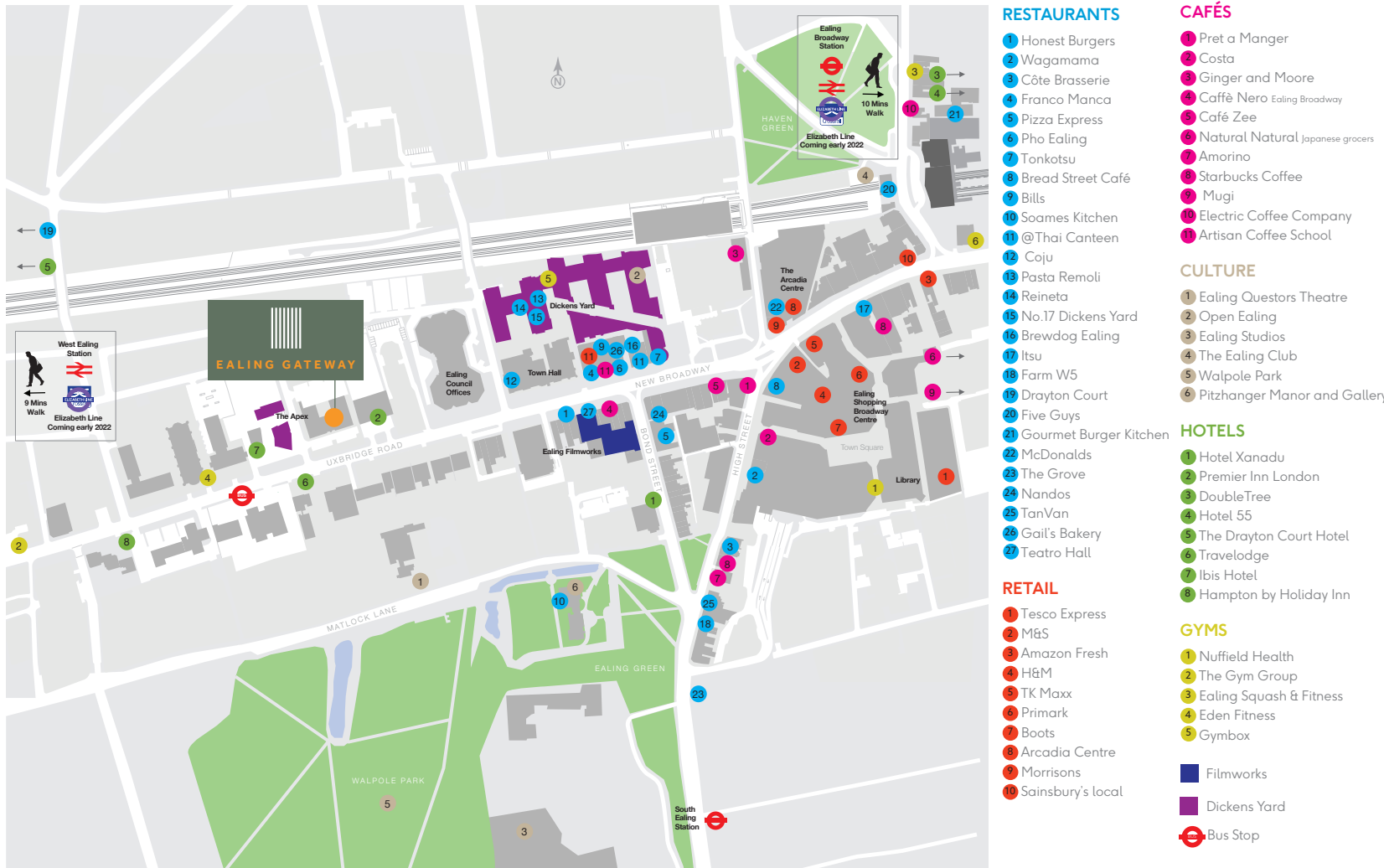
Filmworks



Dickens Yard



## An abundance of local amenities make Ealing the ideal location








The working environment





New air conditioning



4 new passenger lifts



New shower and changing facilities



New business lounge/communal breakout areas



WiredScore Gold



New recessed LED lighting



Full raised access floor



On site parking at 1:1,350 sq ft



New secure cycle storage facility

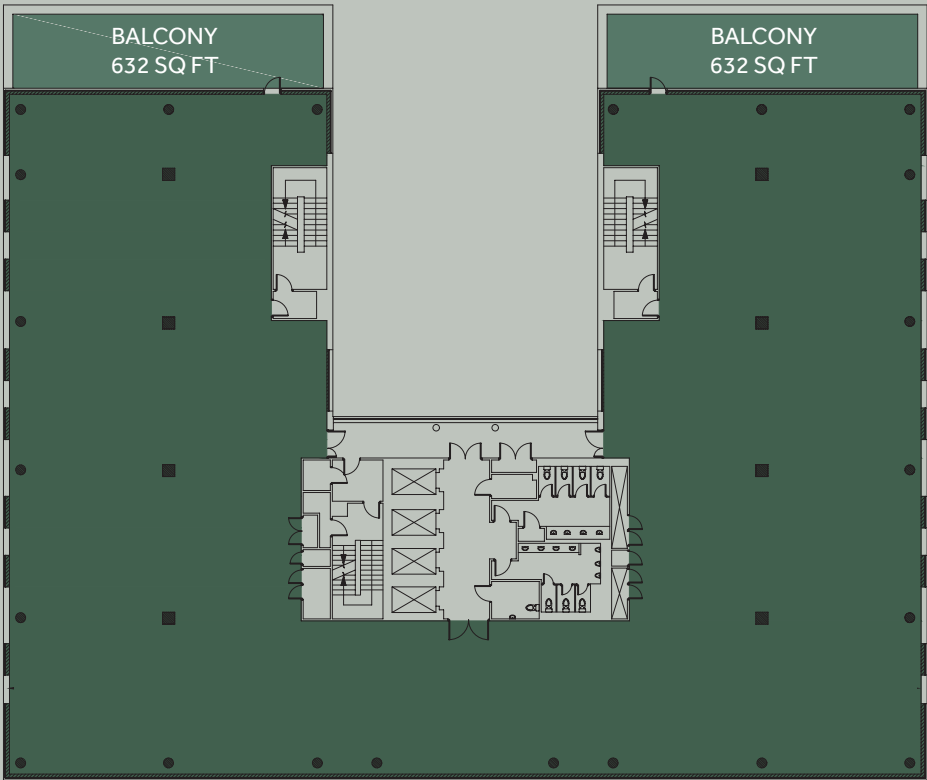


Building run on 100% renewable energy



Flexible space

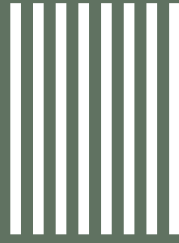
5



G



Floor	sq m (NIA)	sq ft (NIA)
Fifth	1,136.63	12,235
Fourth	1,279.23	13,770
Second	1,278.95	13,767
First	1,126.41	12,125
Ground - West Wing	399.37	4,299
Ground - East Wing	444.54	4,785
Total	5,665.13	60,981



# EALING GATEWAY

26-30 UXBRIDGE ROAD | EALING  
LONDON W5

**EALINGGATEWAY.CO.UK**

## TERMS

Available by way of a new lease direct from the landlord.

## EPC

The accommodation benefits from an EPC C (63), valid until July 2032.

## VIEWING

Strictly by appointment through the joint sole agents.

For further information please contact:



David Cuthbert  
07710 183 423  
dcuthbert@hanovergreen.co.uk

Richard Zoers  
07730 567 607  
rzoers@hanovergreen.co.uk

Harry Pruden  
07721 128 796  
hpruden@hanovergreen.co.uk



020 7629 8171

**KnightFrank.co.uk**

Jack Riley  
07867 002 484  
jack.riley@knightfrank.com

Jack Vestey  
jack.vestey@knightfrank.com  
07971 770 409