



LEISURE / MIXED USE / OFFICE / RETAIL TO LET

## NEW RETAIL UNITS

Longford Park District Centre, Longford Park Road, Banbury, OX15 4GJ

LAST REMAINING, NEW BUILD, RETAIL OR LEISURE UNIT AT THE HEART OF  
LONGFORD PARK 1,000 NEWLY BUILT RESIDENTIAL UNITS WITH A  
FURTHER 825 SOON

1,603 SQ FT (148.92 SQ M)



**BNP PARIBAS  
REAL ESTATE**

[www.realestate.bnpparibas.co.uk](http://www.realestate.bnpparibas.co.uk)

# NEW RETAIL UNITS

Longford Park District Centre, Longford Park Road, Banbury, OX15

TO REQUEST A VIEWING CALL US



BNP PARIBAS  
REAL ESTATE

www.realestate.bnpparibas.co.uk

## DETAILS

### DESCRIPTION

Longford Park District Centre will comprises a Sainsbury Local convenience store, a café, retail and leisure shops and a Busy Bees day nursery, supported by a 44 space shoppers car park.

### ACCOMMODATION

The accommodation comprises the following areas:

Name	sq ft	sq m	Availability
Unit - 1 (Sainsbury)	4,273	396.97	Let
Unit - 2	1,000	92.90	Under Offer
Unit - 3	1,200	111.48	Under Offer
Unit - 4/5 (Cafe)	1,700	157.94	Under Offer
Unit - 6	1,603	148.92	Available
Unit - Day Nursery (Busy Bees)	5,414	502.98	Let

### KEY FEATURES

- Longford Park is a community of 1,825 new homes situated to the south of Banbury town centre.
- The District Centre will be anchored by a new Sainsbury Local convenience store
- The scheme will be home to a new Busy Bees day Nursery
- 3 retail units now under offer - 1 unit remaining
- The District Centre is scheduled to open in quarter three 2026 - Detailed Planning Permission now granted
- Adjoining the District Centre is Longford Park primary school and Longford Park community Centre

### OUTGOINGS

- **Rent:** Rent on application
- **Rates:** To be assessed
- **Service charge:** To be confirmed

## NEW RETAIL UNITS

Longford Park District Centre, Longford Park Road, Banbury, OX15

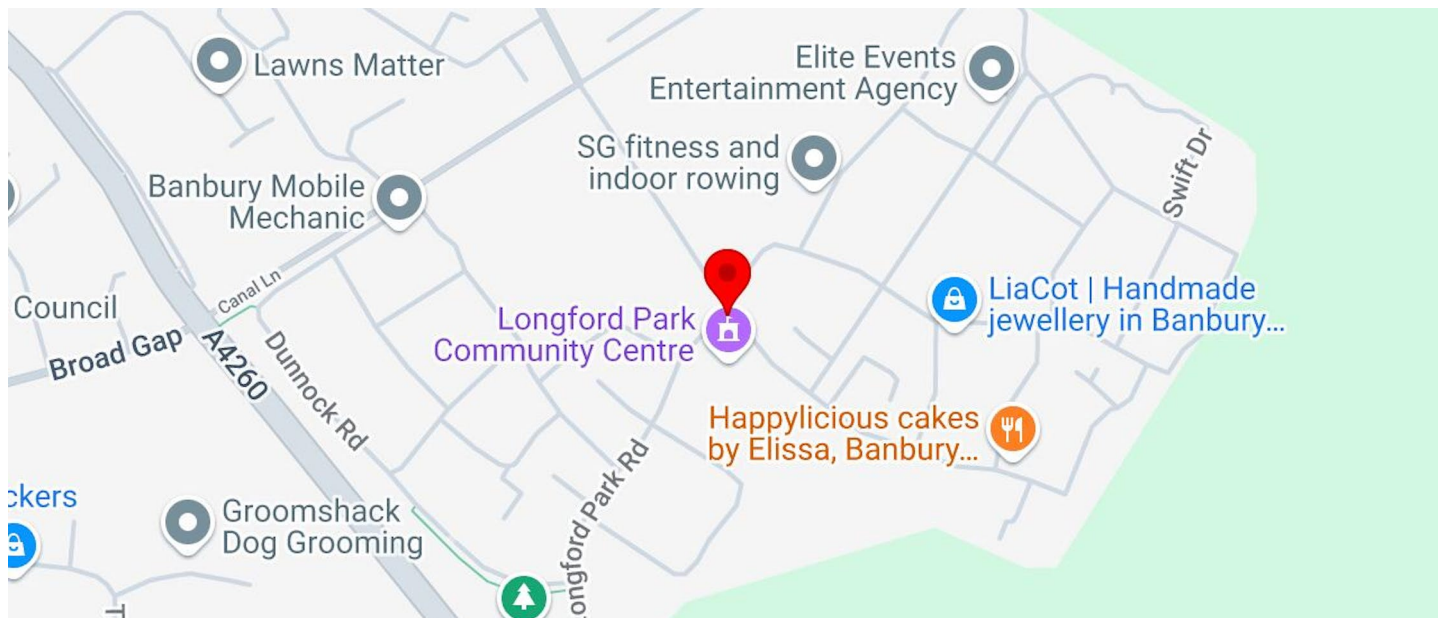
TO REQUEST A VIEWING CALL US



**BNP PARIBAS  
REAL ESTATE**

[www.realestate.bnpparibas.co.uk](http://www.realestate.bnpparibas.co.uk)

## LOCATION



Longford Park is approximately 1.8 miles south of Banbury town centre and 3 miles north of Junction 11 of the M42.

The District Centre lies at the heart of Longford Park and is clustered around the crossroads where the two main arterial routes through the scheme intersect. The District Centre is easily accessible from the Oxford Road (A4260).

Additionally, the District Centre is ideally positioned at the main gateway to Phase two of Longford Park, which will deliver further 825 new homes over the coming years.

## CONTACT US

Gavin Redrupp  
[gavin.redrupp@realestate.bnpparibas](mailto:gavin.redrupp@realestate.bnpparibas)

BNP Paribas Real Estate (Retail and Alternative Markets)  
24 Savile Row, London, W1S 2ES

[www.realestate.bnpparibas.co.uk](http://www.realestate.bnpparibas.co.uk)

[realestate.enquiries@bnpparibas.com](mailto:realestate.enquiries@bnpparibas.com)  
[linkedin.com/company/bnp-paribas-real-estate/@BNPPRE\\_UK](https://www.linkedin.com/company/bnp-paribas-real-estate/@BNPPRE_UK)

Misrepresentation Act 1967: BNP Paribas Real Estate Advisory & Property Management UK Limited for themselves and for the vendor(s) or lessor(s) of this property whose agents they are, give notice that: 1. These particulars do not constitute, nor constitute any part of, an offer or contract. 2. None of the statements contained in these particulars as to the property are to be relied on as statements or representations of fact. 3. Any intending purchaser or lessee must satisfy himself by inspection or otherwise as to the correctness of each of the statements contained in these particulars. 4. The vendor(s) or lessor(s) do not make or give and neither BNP Paribas Real Estate Advisory & Property Management UK Limited nor any person in their employment has any authority to make or give, any representation or warranty whatever in relation to this property. Finance Act 2013: Unless otherwise stated all prices and rents are quote exclusive of VAT. The Business Protection from Misleading Marketing Regulations 2008: These details are believed to be correct at the time of compilation but may be subject to subsequent amendment. Generated by Agentsinsight / Generated on 01/09/2025



NEW RETAIL UNITS, LONGFORD PARK DISTRICT CENTRE,  
LONGFORD PARK ROAD, BANBURY, OX15 4GJ

TO REQUEST A VIEWING CALL US ON



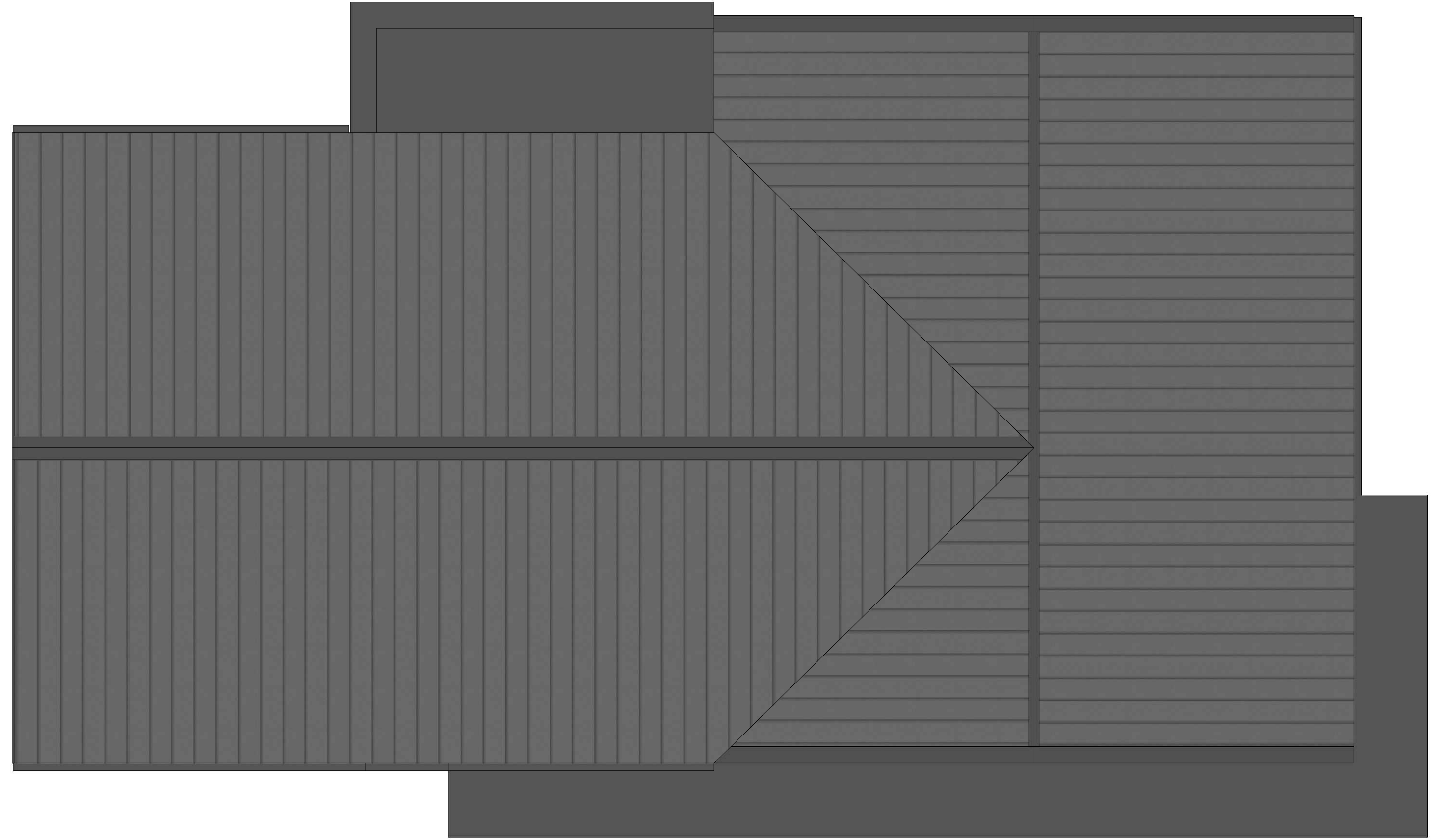
**BNP PARIBAS  
REAL ESTATE**

[www.realestate.bnpparibas.co.uk](http://www.realestate.bnpparibas.co.uk)





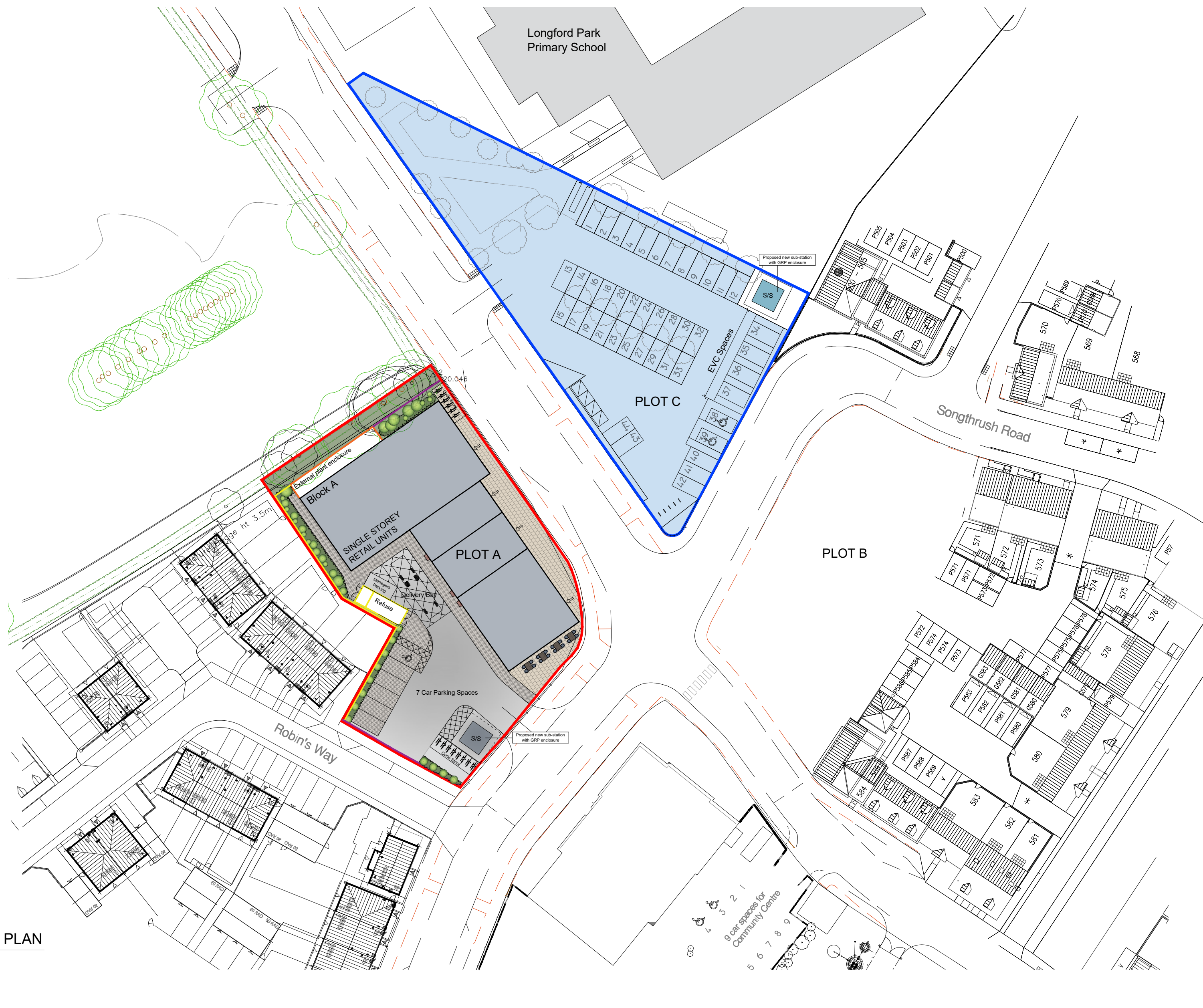
1 Proposed Ground Floor Plan  
1:100



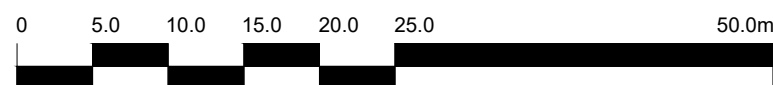
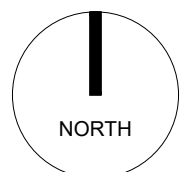
2 Proposed Roof Plan  
1:100

<div><div><div>0</div><div>1.0</div><div>2.0</div><div>3.0</div><div>4.0</div><div>5.0</div><div>10.0m</div></div></div> <div>The copyright of this drawing is vested with Corstorphine &amp; Wright Ltd and must not be copied or reproduced without the consent of the company.</div>				<div><div><div>P-02 Updated Room Areas</div><div>P-01 Updates to Nursery and Retail Unit</div><div>P-00 Initial Issue</div><div>Rev. Description</div></div><div><div>05-04-24</div><div>04-04-24</div><div>27-03-24</div><div>Date</div></div><div><div>CH</div><div>CH</div><div>JW</div><div>Drw.</div></div><div><div>CC</div><div>CC</div><div>CH</div><div>Chk.</div></div></div>								<div><div>Client</div><div>HDD</div><div>Project</div><div>Longford Park</div><div>Banbury</div><div>Drawing Title</div><div>Proposed Floor and Roof Plans</div><div>Drawing Status</div><div>PLANNING</div></div> <div><div>Corstorphine &amp; Wright</div><div><div>Tamworth Studio</div><div>5 Aldergate, Tamworth, B79 7DJ</div><div>01827 6711 23</div><div>corstorphine-wright.com</div></div><div><div>Drawing No.</div><div>23981-0321</div></div><div><div>Revision</div><div>P-02</div></div><div><div>Drawn</div><div>Checked</div><div>Paper Size</div><div>Scale</div><div>Date</div></div><div><div>JW</div><div>CH</div><div>A1</div><div>1:100</div><div>26.03.24</div></div></div>			
---	--	--	--	---	--	--	--	--	--	--	--	---	--	--	--





1 PROPOSED SITE LAYOUT PLAN  
1:500



The copyright of this drawing is vested with Corstorphine & Wright Ltd and must not be copied or reproduced without the consent of the company.

P-16	Updated Plot C Parking Layout	08.05.25	CH	CC
P-15	Updated Plot C Parking Layout	06.04.25	CH	CC
P-14	Sub-station image & EV demise removed	17.04.25	IH	CC
P-13	Updated to show external plant units & sub-station finishes / spec	24.03.25	CH	CC
P-12	Adjusted position of Sub-Station and parking, added detail to refuse store area	12.03.25	CH	CC
P-11	Added redline boundary to EV Car Paring to Plot C	24.01.25	CH	CC
P-10	Adjusted labelling to Plot A car park	20-01-25	CH	CC
P-09	Adjusted parking layout & EV Spaces to Plot C	20-12-24	CH	CC
P-08	Adjusted cycle parking numbers and car park layout	26-11-24	CH	CC
P-07	Updated plant enclosure fencing	27-09-24	CH	CC
P-06	Added parking space to layout, indicated unit divide	05-09-24	CH	CC
P-05	Updated site layout	03-09-24	CH	CC
P-04	Car parking and substation revised in line with client comments	29-08-24	CH	CC
P-03	Updated location of Sub-station and car parking configuration	06-08-24	CH	CC
P-02	Revised location of cycle store. Added sub-station to Plot C	05-08-24	CH	CC
P-01	Revised site layout to retail parking area	11.04.24	CH	CC
P-00	Initial Issue	27.03.24	CH	CC
Rev.	Description	Date	Drw.	Chk.

P-17 Updated Plot C Parking Layout 13.05.25 CH CC

Client  
HDD

Project  
Longford Park  
Banbury

Drawing Title  
Proposed Site Layout Plan

Drawing Status  
PLANNING

Corstorphine & Wright

Tamworth Studio  
5 Aldergate, Tamworth, B79 7DJ  
01827 671 23

corstorphine-wright.com

Drawing No.  
23981-0310

Drawn  
CH

Checked  
CC

Paper Size  
A2

Scale  
1:500

Date  
21-03-24

Revision  
P-17





1 Proposed Front Elevation  
1:100



2 Proposed Side Elevation A  
1:100



3 Proposed Rear Elevation  
1:100



4 Proposed Side Elevation B  
1:100

5 Materials Key

	Horton Stone		Composite profiled insulated roof panels	
	Horizontal timber cladding		Powder coated aluminium window & door frame units	
	powder coated projecting entrance canopy to Nursery		Powder coated aluminium panels to head of entrance doors	
	Powder coated aluminium projecting canopy to Nursery		Powder coated aluminium box gutters & rwp's	

P-08	Materials updated	14.04.25	JW	CH
P-07	Materials updated	10.04.25	JW	CH
P-06	Updated to show external plant units	24-03-25	CH	CC
P-05	Revised position of Signage Zone, added canopy over entrance door	16-09-24	CH	CC
P-04	Updated in line with Client comments	29-08-24	CH	CC
P-03	Updated materials key	12-04-24	CH	CC
P-02	Added signage zones to units	08-04-24	CH	CC
P-01	Updated nursery and retail unit	04-04-24	CH	CC
P-00	Initial Issue	27.03.24	JW	CH
Rev	Description	Date	Drw	Chk

0 1.0 2.0 3.0 4.0 5.0 10.0m

The copyright of this drawing is vested with Corstorphine & Wright Ltd and must not be copied or reproduced without the consent of the company.

Client HDD	<b>Corstorphine &amp; Wright</b>			
Project Longford Park Branbury	Tamworth Studio 5 Aldergate, Tamworth, B79 7DJ 01827 671 23 corstorphine-wright.com			
Drawing Title Proposed Elevations	Drawing No. 23981-0331	Revision P-08		
Drawing Status PLANNING	Drawn JW	Checked CH	Paper Size A1	Scale 1:100
		Date 20.03.24		