

UNIT 10

Carvers Industrial Estate

UNIT 10 CARVERS INDUSTRIAL ESTATE
SOUTHAMPTON ROAD
RINGWOOD, BH24 1JS

DETACHED
TRADE COUNTER/
WAREHOUSE/LIGHT
INDUSTRIAL UNIT

TO LET

3,959 SQ FT (367.76 SQM)

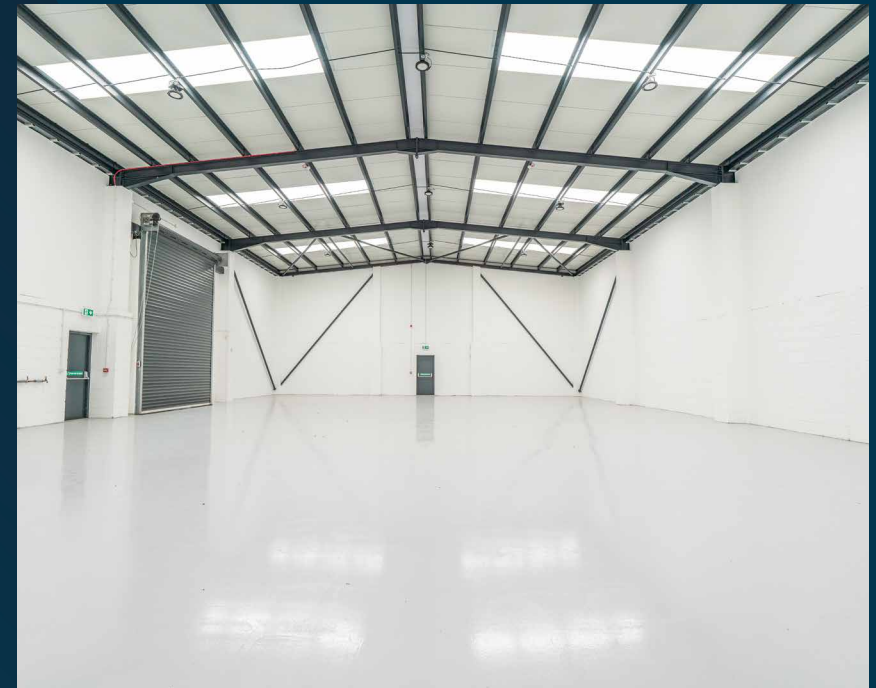
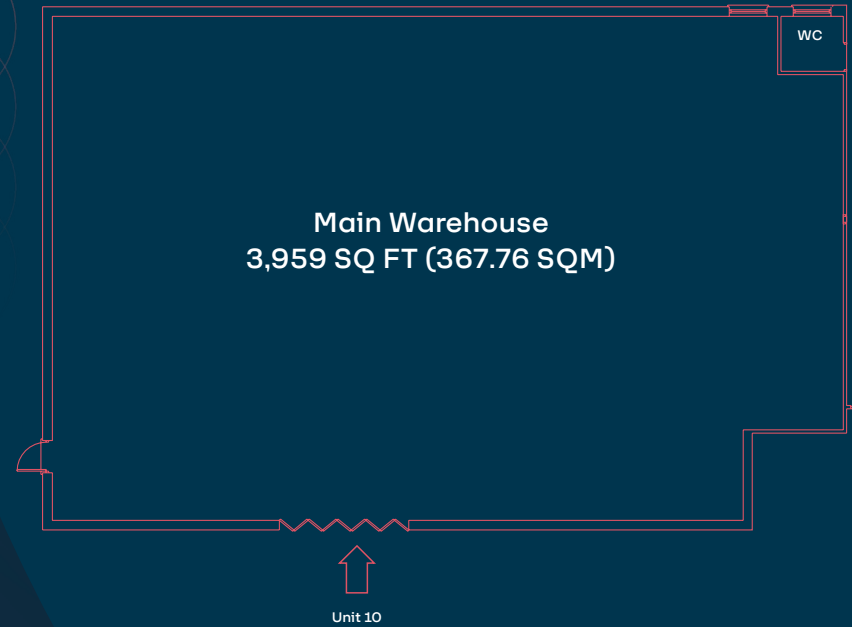
THE PROPERTY

The available accommodation comprises a self-contained warehouse unit within a detached building, accessed via an electric loading door to the side elevation.

The space provides clear span storage accommodation suitable for a variety of industrial and distribution uses, with good loading access for vehicles.

Externally, the property benefits from a large car park and loading area, offering ample space for parking, servicing, and manoeuvring.

FLOOR PLAN



LED
Lighting



Prominent
Location



Recently
Refurbished



6.07M
Eaves



Large yard and
12 car parking
spaces



Electric
Loading Door
4.89M (H) x
3.80M (W)



A31



THE LOCATION

The property is situated in the heart of the town centre less than 0.5 miles south of the A31 dual carriage way. The property is the principal trade estate within Ringwood, situated off the Southampton Road in the heart of the town.

The estate can be accessed via either B3347 Christchurch Road or the A31 dual carriageway, 0.5 miles to the north via Furlong roundabout.

- | | | | |
|----|---|-----|--|
| 1 | TOOLSTATION | 6 |  HOWDENS |
| 2 | TOOLSTATION | 7 |  FOREST
VETERINARY CLINIC |
| 3 | BEST AUTOCENTRE | 8 | Brewers
DECORATOR CENTRES |
| 3a | Topps Tiles | 9 |  re FINEWOOD
electrical |
| 3b |  HPS
Heating Plumbing Supplies | 10 | TO LET |
| 4 | SCREWFIX | 12a | TO LET |
| 5 |  HOWDENS | 12b | APOLLO OPTICAL
MANUFACTURING LTD |

UNIT 10

Carvers Industrial Estate

TERMS

The unit is available on a new full repairing and insuring lease for a term to be agreed.

RENT

£59,500 per annum exclusive of VAT, business rates and any other occupational costs.

SERVICE CHARGE

A service charge will be levied to cover the cost of external landscaping and maintenance of the estate.

LEGAL COSTS

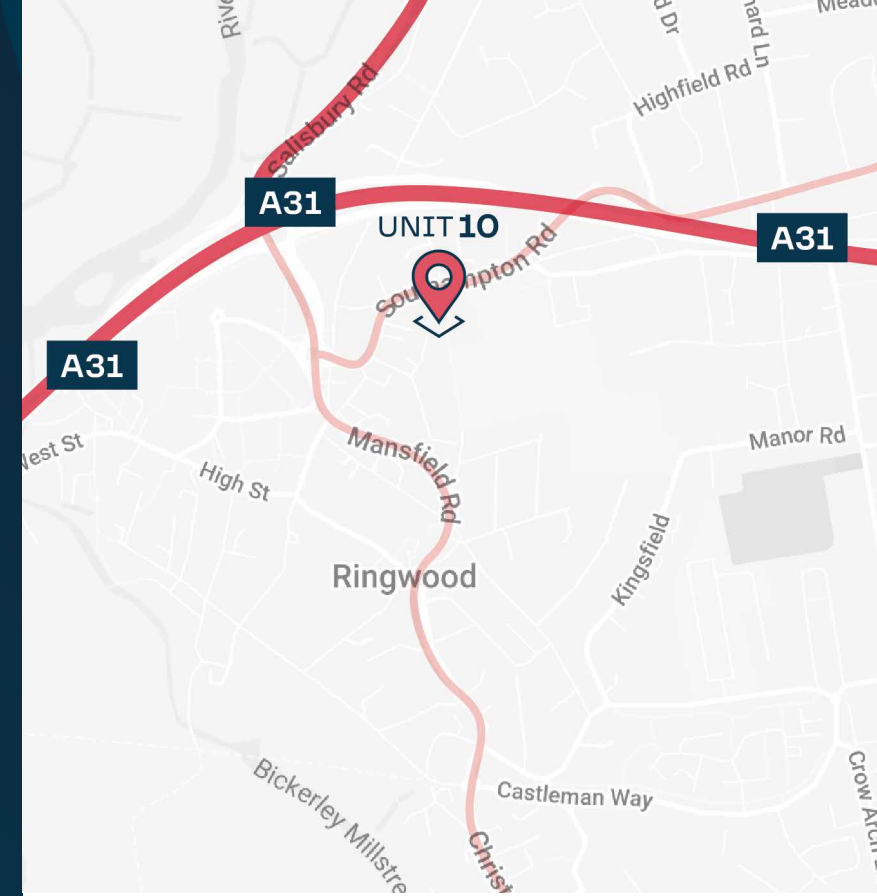
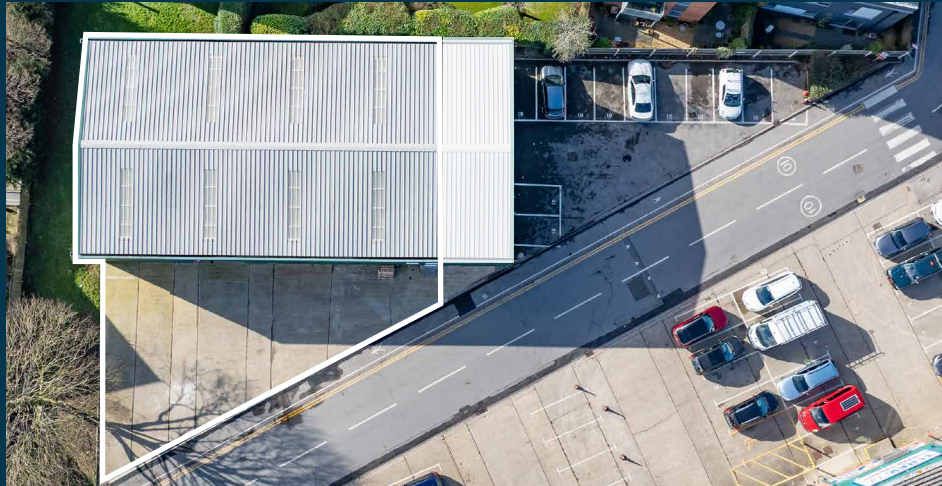
Each party to be responsible for their own legal costs incurred with any transaction.

RATEABLE VALUE

To be reassessed, estimated at £43,000

EPC

B - 49



VIEWING & FURTHER INFORMATION

Viewings strictly by appointment only:

**Lambert
Smith
Hampton**

Dan Rawlings
07702 809192
drawlings@lsh.co.uk

Luke Mort
07591 384236
lmort@lsh.co.uk

**HELLIER
LANGSTON**

Matt Poplett
07971 824525
matt@hlp.co.uk

Jason Webb
07989 959064
Jason@hlp.co.uk

Lambert Smith Hampton and Hellier Langston give notice that: a. the particulars are set out as a general outline for guidance and do not constitute an offer or contract; b. all descriptions, dimensions and other details are believed to be correct, but any intending purchasers, tenants or third parties should not rely on them as statements or representations of fact; c. All properties are measured in accordance with the RICS property measurement, 1st Edition May 2015 (incorporating IPMS) unless designated NIA/GIA/GEA, in which case properties are measured in accordance with the RICS Code of Measuring Practice (6th Edition); d. Any images may be computer generated. Brochure by Virtualoom. April 2026. 