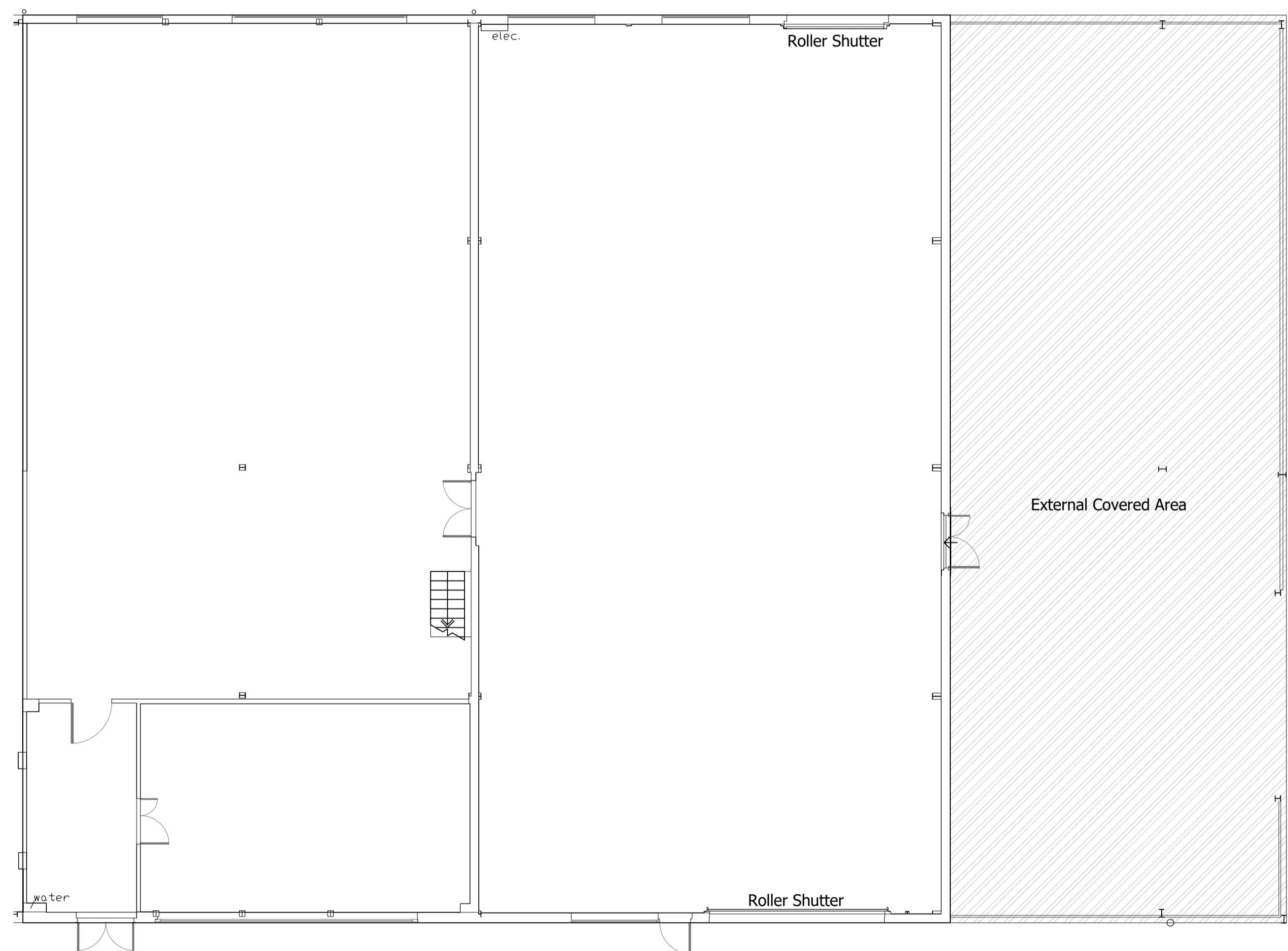


Unit 3B Areas

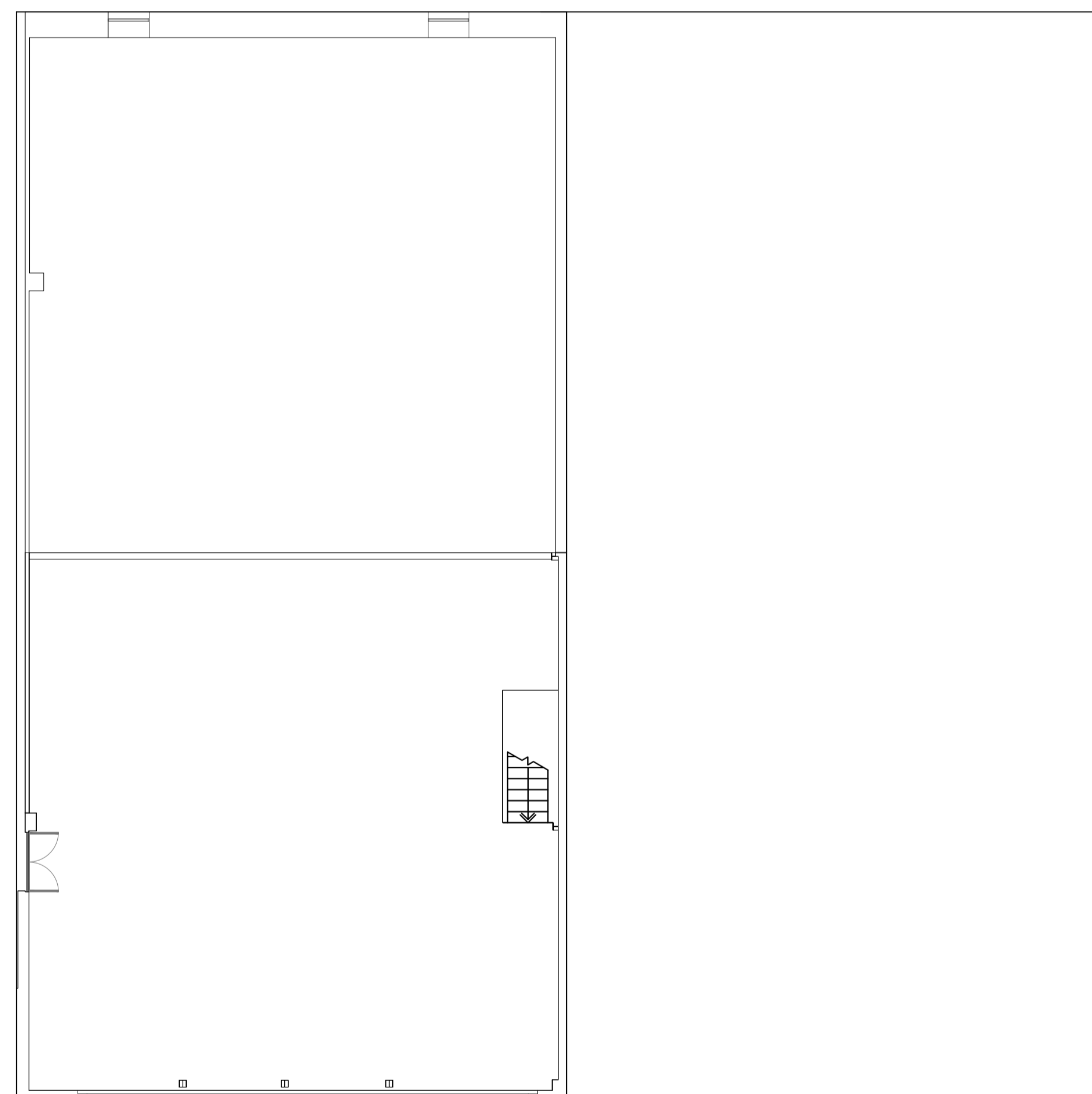
Ground Floor - 578.32 sqm / 6224.98 sqft
 First Floor - 142.3 sqm / 1531.70 sqft
 Total - 720.62 sqm / 7756.68 sqft

External Covered Area:
 Total - 219.44 sqm / 2362 sqft

Total Size including covered area - 940.06
 sqm / 10118.68 sqft



○ Ground - Unit 3B



○ First - Unit 3B

1 UNIT 3B PLAN
 - SCALE 1:100 @ A1

B	REVISED AS PER COMMENTS	22.06.26	SM
A	DRAWING CREATED	17.06.26	SM
Revision	Description	Date	By
Client Name: BUILDING 3			
Project Address: UNIT 3, THE WAY FOWLMERE CAMBRIDGE, SG8 7QS			
Drawing Title: UNIT 3B - DEMISE PLAN			
Drawing Scale: 1:100 @ A1		Drawn By: SM	Date Created: 17.06.26
Project Number 2987	Floor Number 00/01	Drawing Type GA	Revision B