

1,829 SQFT OFFICE & 57 SQUARE METRES SQFT

PRIVATE TERRACE

4TH FLOOR NORTHGATE
118 NORTH STREET, LEEDS, LS2 7PN

YOUR
OWN
OFFICE



- 01** LOCATION
- 02** PRIVATE TERRACE
- 03** PRIVATE OFFICES
- 04** MAIN OFFICES
- 05** FLOOR PLAN
- 06** KITCHEN & OFFICE AMENITIES
- 07** BREAK OUT AREAS
- 08** WSH FACILITIES



01 LOCATION



HEART OF THE CITY

- Leeds City Museum & Millennium Square - Approximately 0.5 miles (0.8 km) away, about a 10-minute walk.
- Leeds Art Gallery - Around 0.6 miles (1 km) away, roughly a 12-minute walk.
- Trinity Leeds Shopping Centre - Approximately 0.7 miles (1.1 km) away, about a 14-minute walk.
- Leeds Grand Theatre - Roughly 0.4 miles (0.6 km) away, about an 8-minute walk.
- Woodhouse Moor (Hyde Park) - About 0.8 miles (1.3 km) away, approximately a 15-minute walk.



02 PRIVATE TERRACE



The roof top terrace offers magnificent views of Leeds city skyline and can double as a relaxation and social area
57 square metres

03 PRIVATE OFFICES

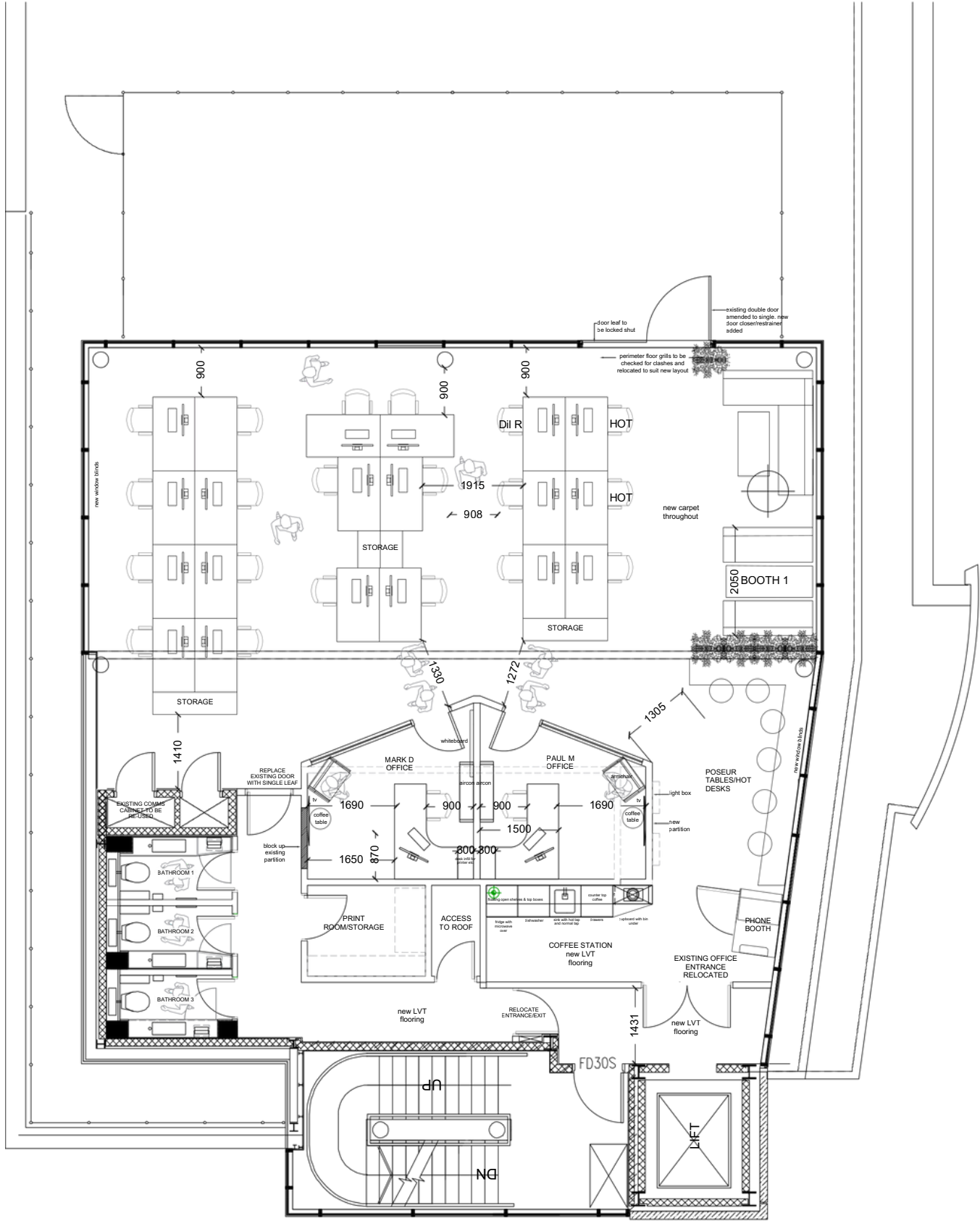





04 MAIN OFFICES



05 FLOOR PLAN



4TH FLOOR PLAN

	FATFISH DESIGN - Hospitality Design Specialists E:design@fatfishdesign.com T:07841596862	
	REV DATE	AMENDMENTS
	PROJECT NO : HO DRAWING NO : 101_002 SCALE : 1:50 @ A1	
DRAWING TITLE : AS BUILT GA CLIENT : PARKLANE GROUP PROJECT : 4TH FLOOR HEAD OFFICE		DATE : 15.11.22 STATUS : AS BUILT REVISION :

06 KITCHEN & OFFICE AMENITIES



06 OFFICE AMENITIES





08 WORKSPACE HUB FACILITIES

ALL INCLUSIVE

3 car parking spaces in our underground car park

Access to well-equipped kitchen facilities including a dishwasher, fridge, kettle, toaster, water dispenser, and microwave

Fast 500MB internet connection

Regular cleaning service with offices vacuumed and polished twice a week

Enhanced security measures for the entire floor and building

Participation in our in-house events

24/7 access to the premises

Inclusive of business rates

No additional service charges



Contact Us

Northgate Building: 118 North Street, Leeds, LS2 7PN

St Andrew's House: St Andrew's St, Leeds LS3 1LF, UK

Telephone: 0113 242 5100

Email: info@workspacehub.co.uk