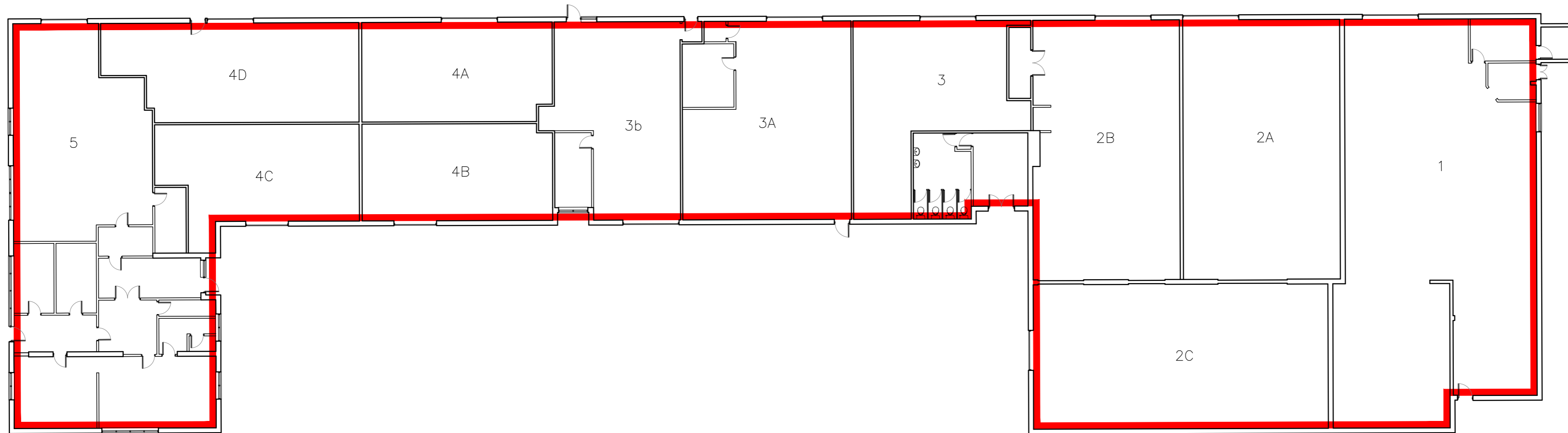


LOCATION PLAN SHOWN @ 1:1250 0m 10m 20m 30m 40m 50m  
K.A.D. Licensed O.S. No. 100047482



**GROUND INTERNAL AREAS**

- UNIT 1 - 295.6 m<sup>2</sup>
- UNIT 2A - 153.6 m<sup>2</sup>
- UNIT 2B - 148.7 m<sup>2</sup>
- UNIT 2C - 160.5 m<sup>2</sup>
- UNIT 3 - 86.6 m<sup>2</sup>
- UNIT 3A - 124.4 m<sup>2</sup>
- UNIT 3B - 95.4 m<sup>2</sup>
- UNIT 4A - 70.4 m<sup>2</sup>
- UNIT 4B - 68.9 m<sup>2</sup>
- UNIT 4C - 70.4 m<sup>2</sup>
- UNIT 4D - 88.3 m<sup>2</sup>



Rev	Revision	By	Date
<p>Client <b>PETCHHEY HOLDINGS</b></p>			
<p>Project <b>SKILL CENTRE LIMBERLINE SPUR PORTSMOUTH, PO3 5LF</b></p>			
<p>Drawing <b>BLOCK A FLOORPLAN</b></p>			
Scale	1:200@A2	Date	AUG 2019
Project no.	Sequential	Blk/Floor	Detail
KAD	01	A	EX