



CENTURA

WELLINGTON ST.



Discover a new perspective

Grade A Workspace
from 2,855 sq ft

CENTURA LEEDS



A new perspective on Leeds

Centura unveils itself as a premier Grade A office positioned at the very core of Leeds' city centre. Commanding a prominent position on Wellington Street, in close proximity to Leeds railway station & the West End, Centura provides a gateway to modern connectivity and urban convenience.

Having undergone an all-encompassing refurbishment, the building emerges as a distinctive haven, offering not only contemporary workspace but also reimagined communal and dwelling spaces. This transformation sets Centura apart from the ordinary, creating an environment that truly breaks the mould.

Reimagined workspace

Spanning six floors and encompassing more than 35,000 sq ft of Grade A workspace, Centura stands reborn and reimagined, tailored to the exacting standards of the discerning occupant.

A symphony of reinvention, Centura emerges as an inspirational contemporary realm meticulously curated for the prosperity of businesses.







Centura provides Grade A specification office accommodation

INCORPORATING:

ESG

Centura has been designed to employ focussed Environmental, Social and Governance (ESG) initiatives;

Environmental

- Eight EV charging points within the ground level rear parking area.
- Extensive high quality shower facilities to encourage sustainable transport to the office.
- The basement, ground, and first floors are entirely powered by electricity instead of gas, ensuring a more efficient and environmentally friendly energy consumption.

Social

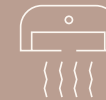
- Tenant break-out and tech lounge.
- Multi-purpose events and conferencing.
- Integrated cycle storage and repair stations in the basement.



Exposed ceilings with new LED lights throughout



Raised access floor



Brand new energy efficient VRF air conditioning

EPC A

EPC A rating



Onsite commissioner and reception service



Two 10 person passenger lifts



Shower facilities

WiredScore Platinum



Full height double glazed windows



Bike hub



Secure Basement Parking and EV charging



Min. 2.7m from floor to underside of ceiling grid

MEET YOU AT

THE
COFFEE
STATION

Introducing an inventive and invigorating tenant break-out and tech lounge meticulously crafted to serve as an informal meeting and dwelling space.

This exceptional environment boasts a fully equipped barista bar and seamlessly integrated booth seating, presenting an ideal setting for rejuvenation before embarking on the day's endeavours or unwinding after a productive day's work.

MILLENNIUM
SQUARE
9 MIN

PARK
SQUARE
6 MIN

THE LIGHT
SHOPPING CENTRE
10 MIN

WELLINGTON ST.

VICTORIA
GATE
16
MIN

TRINITY LEEDS
SHOPPING CENTRE
6 MIN

WELLINGTON
PLACE
2 MIN

LEEDS
TRAIN STATION
4 MIN

Centura from above

Centura is situated on Wellington Street in the heart of Leeds' Financial Quarter, the acknowledged central business district within the city, and it's home to a variety of top-tier professional and financial services occupiers. Just steps away, the lively retail core showcases Leeds' finest restaurants, bars, and leisure establishments. Moreover, Leeds Railway Station, a mere 2-minute walk from our doorstep, facilitates travel to a plethora of destinations across the country, along with nearby green spaces like Park Square.



PUBS, BARS AND RESTAURANTS

- | | | |
|---------------------|-------------------------|----------------------------|
| 1. Veeno | 13. All Bar One | 25. Phranakhon |
| 2. Mad Frans | 14. The Liquorist | 26. The Whitehall |
| 3. Editors Draught | 15. The Alchemist | 27. Mans Market |
| 4. Green Room | 1. Lost and Found | 28. My Thai |
| 5. Toast | 6. Riva Blu Italian | 29. Nawaab |
| 6. Lazy Lounge | 1. The Slug and Lettuce | 30. Da Vito Ristorante |
| 7. My Bar | 7. The Decanter | 31. The Soap Factory |
| 8. Town Hall Tavern | 20. Wetherspoon's | 32. I am Döner |
| 9. Dirty Martini | 21. Electric Shuffle | 33. Sous le Nez |
| 10. BOX | 22. Flight Club | 34. Restaurant Bar & Grill |
| 11. Banyan | 23. Rebound Social | 35. Blackhouse |
| 12. Manahatta | 24. Good Luck Club | |

- | |
|-------------------------|
| 36. El Gato Negro Tapas |
| 37. Indian Tiffin Room |
| 38. Gusto 39. Sukhothai |
| 40. San Carlo |
| 41. Bar Soba |
| 42. Hoist House |

CAFES

- | |
|-------------------------|
| 43. Sociable Folk |
| 44. Starbucks® |
| 45. & Co Coffee |
| 46. Caffé Nero |
| 47. Shokupan |
| 48. Nosh |
| 49. LS1 Forty Five |
| 50. Philpotts |
| 51. La Bottega Milanese |
| 52. Pret A Manger |
| 53. Wolfbox Coffee |

Roasters

- | |
|---------------------------|
| 54. The Clubhouse |
| 55. La Bottega Milanese |
| 56. IF... Up North |
| 57. Moose Coffee |
| 58. Starbucks® |
| 59. Tasty Toasties |
| 60. Greggs |
| 61. Fish Out |
| 62. Bagel Nash |
| 63. La Piola Italian Deli |

SHOPS

- | | |
|-----------------------|-----------|
| 64. Newsagents | 65. |
| Co-op | 66. M&S |
| Foodhall | 67. Tesco |
| Express | |
| 68. Sainsbury's Local | |

LEISURE

- | |
|------------------|
| 69. TRIB3 |
| 70. Ryde Studios |
| 71. Nap Fitness |

HOTELS

- | |
|------------------|
| 72. Crowne Plaza |
| 73. Premier Inn |
| 74. Novotel |
| 75. The Met |



AVAILABILITY

Accommodation

FLOOR	AREA SQ.FT	AREA SQ.M	AVAILABILITY
Ground Unit 1	2,855	265.24	Available
Ground Unit	2,014	187.11	let
First	6,272	582.69	Available
Second	6,272	582.69	let
Third	6,116	568.20	let
Fourth	5,960	553.70	let
Fifth	5,097	473.53	let
Total	34,586	3,213	

+ 10 parking spaces available



AVAILABILITY

Ground Floor

Presenting an impressive spectacle the ground floor suites take centre stage, accessed immediately from reception and fronting onto Wellington Street.

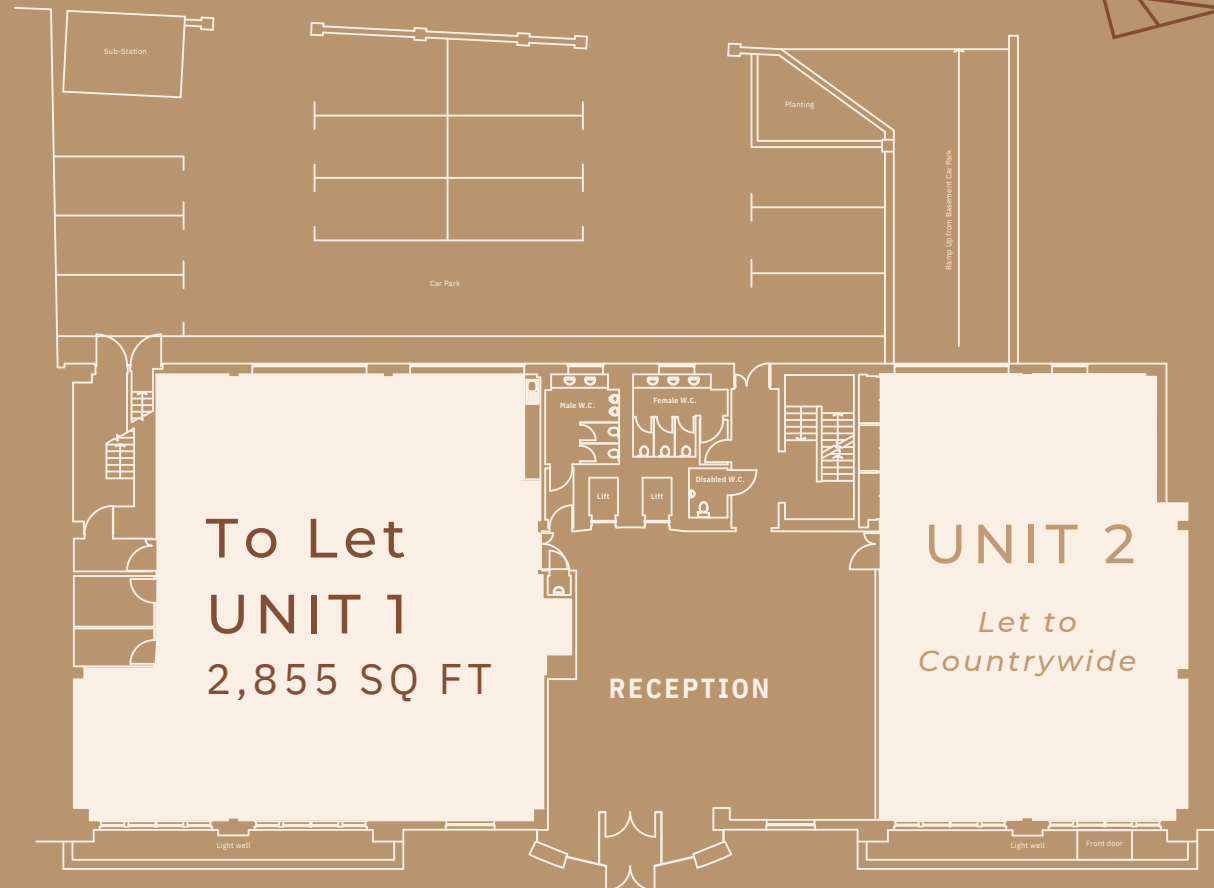
These meticulously designed suites have undergone an extensive transformation to meet a grade A specification, equipped with modern amenities such as VRF air conditioning, LED lighting, and exposed services. This meticulous attention to detail culminates in a captivating and contemporary workspace that exudes sophistication.

EPC A

Ground floor Suites
Rated EPC A

UNIT 1
2,855 SQ FT
265.24 SQ M

UNIT 2
LET



CENTURA



WELLINGTON ST.



SPACES

Ground Floor - Unit 1



GROUND FLOOR - UNIT 1



AVAILABILITY

First Floor

The first-floor suite has undergone a meticulous transformation to meet Grade A specifications, aligning seamlessly with Centura's impressive refurbishment efforts throughout the property.

Enhanced with modern amenities, including VRF air conditioning, LED lighting, and exposed services, this expansive space is designed for adaptability. Whether divided into distinct sections or seamlessly integrated with a ground floor suite, the flexibility and meticulous attention to detail converge to create a captivating and contemporary workspace.

AVAILABLE

6,272 SQ FT

582.69 SQ M

EPC A

First floor unit rated EPC A



To Let
6,272 SQ FT

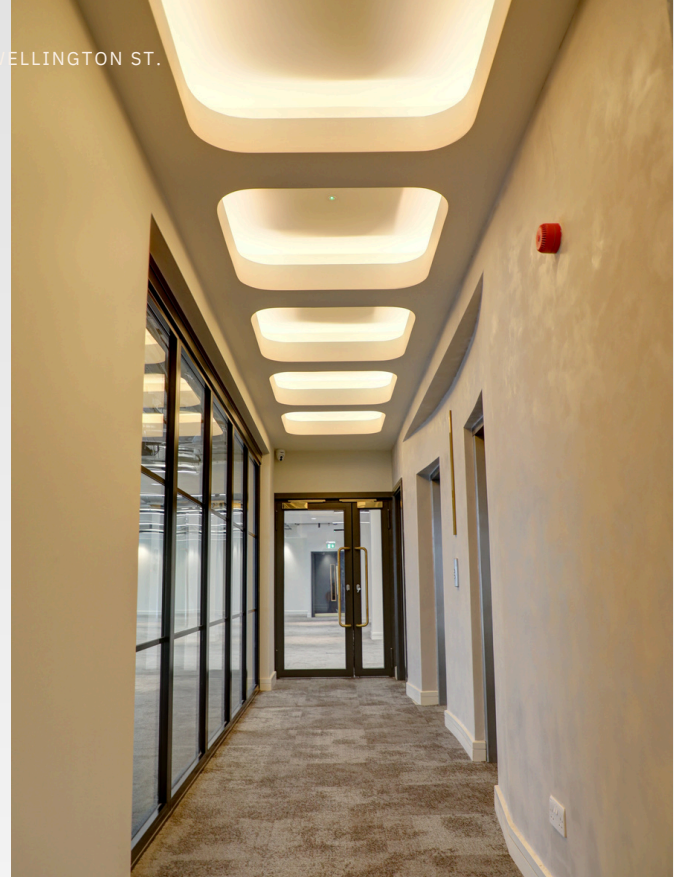




CENTURA



WELLINGTON ST.



SPACES

First Floor



FIRST FLOOR



Robin Beagley
07733 895 927
rbeagley@wsbproperty.co.uk

Duncan Senior
07888 730 366
dsenior@wsbproperty.co.uk

www.wsbproperty.co.uk



Victoria Harris
07971 745 763
Victoria.Harris@knightfrank.com

Elizabeth Ridler
07500 032855
Elizabeth.Ridler@knightfrank.com

www.knightfrank.com

Centura, 76 Wellington St, Leeds, LS1 4DL

 DESIGNED BY SOCIETYSTUDIOS.CO.UK

MISREPRESENTATION ACT: Knight Frank (KF) and WSB Property Consultants LLP (WSB) for themselves and for the vendors or lessors of this property for whom they act, give notice that: (i) these particulars are a general outline only, for the guidance of prospective purchasers or tenants, and do not constitute the whole of any part of any offer or contract; (ii) KF and WSB cannot guarantee the accuracy of any description, dimensions, references to condition, necessary permissions for use and occupation and other details contained herein and prospective purchasers or tenants must not rely on them as statements of fact or representations and must satisfy themselves as to their accuracy; (iii) no employee of KF or WSB has any authority to make or give any representation or warranty or enter into any contract whatever in relation to this property; (iv) rents quoted in these particulars may be subject to VAT in addition; and (v) KF and WSB will not be liable, in negligence or otherwise, for any loss arising from the use of these particulars. Consumer Protection from Unfair Trading Regulations 2008 and Business Protection from Misleading Marketing Regulations 2008: Every reasonable effort has been made by KF and WSB to ensure accuracy and to check the facts contained in these particulars are complete. Interested parties are strongly advised to take appropriate steps to verify by independent inspection or enquiry all information for themselves and to take appropriate professional advice. Details updated June 2023