

**fisher
german**

City

99 Bishopsgate
London, EC2M 3XD

Self Contained Offices

150 - 500 Sq.ft



From | £204 psf / £600 per desk + VAT pcm



Accommodation

Description

75 Grosvenor Street is a Grade II listed building in Mayfair, London, offering premium, serviced office space. It features a blend of modern and traditional design, with high-end finishes and a landscaped rooftop terrace. The building is known for its elegant and sophisticated environment.

Licence Term

New Licences are available for a term by arrangement.

Amenities



24/7
Access



Air
Con



Bike
Racks



Kitchen



Reception



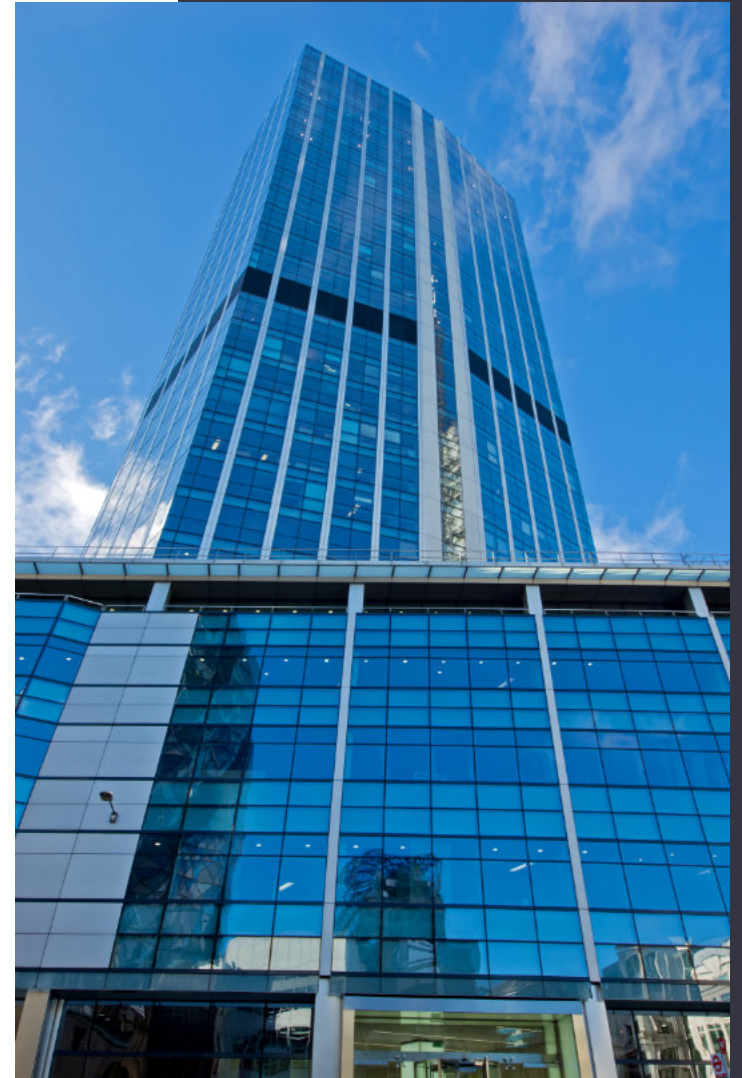
End of
Journey
Facilities



Meeting
Rooms

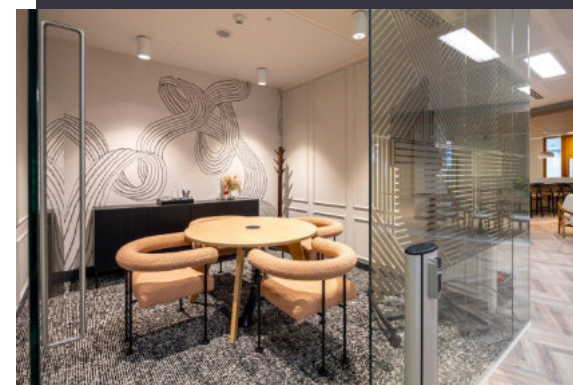


Lockers

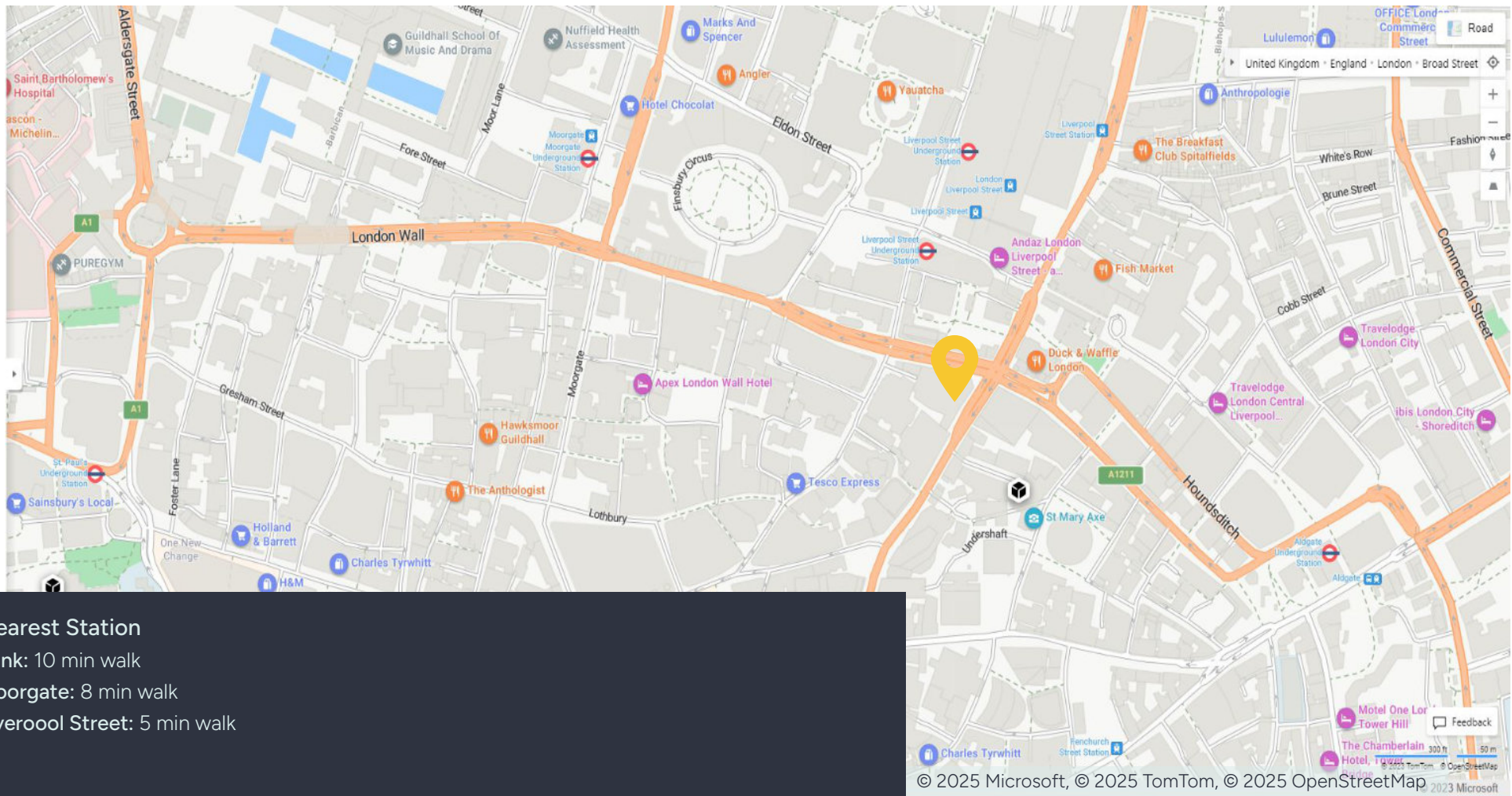


Accommodation

Price Per Desk (Starting From excl. VAT)	Size Sq.ft	1200mm Desk Capacity	1400 Desk Capacity	Monthly Cost (excl. VAT)	Available From
£650	150	3	3	£1,950	Now
£600	150	3	2	£1,800	Now
£600	150	3	2	£1,800	Now
£613	150	4	3	£2,450	Now
£767	250	6	5	£4,600	September 25
£642	250	6	5	£3,850	Now
£700	250	7	5	£4,900	Now
£732	500	14	11	£10,250	October 25
£854	500	14	11	£11,950	Now



Location



Nearest Station

Bank: 10 min walk

Moorgate: 8 min walk

Liverpool Street: 5 min walk

Contact us

Viewings by appointment only.

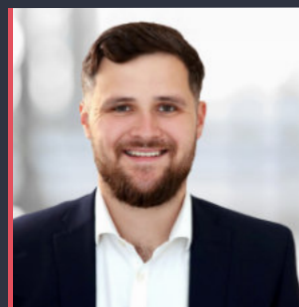
To arrange a viewing, please contact:



Doug Gordon

020 7747 3117

Doug.gordon@fishergerman.co.uk



Liam Carvalho

020 7747 3194

Liam.carvalho@fishergerman.co.uk

Please note: Fisher German LLP and its Joint Agents give notice that: 1. They have no authority to make or give any representation or warranty on any property whether on their own behalf or on behalf of their clients or otherwise. 2. They do not owe any duty of care to you and assume no responsibility for any statements, representations, warranties or otherwise made in the particulars and you should not rely on those in the particulars. 3. The particulars are produced in good faith are set out as a general guide only and do not constitute or form an offer or a contract or part thereof. 4. Any photographs, descriptions, plans, measurements, distances and any other details in the particulars are approximate estimates only taken as the property appeared at the time and should not be relied upon as factually accurate. 5. Fisher German assumes prospective purchasers/tenants have carried out inspections to satisfy themselves that the information in the particulars is correct.

Particulars dated August 2025. Photographs dated 2024.



This brochure is fully recyclable