



TWELVE GREEK STREET

LEEDS LS1

Newly refurbished and fitted suites available from 1,083 - 6,360 sq ft

Available Winter 2025



# CONTEMPORARY SOPHISTICATION

**Situated in the heart of Leeds Central Business District sits Twelve Greek Street.** A comprehensive, prime & prominent multi-let space, only a stone's throw away from Leeds' key business and leisure areas. Leeds Central Station & public transport facilities are a few minutes' walk away, creating an easily accessible work place.





# CREATIVITY COLLABORATION & CONNECTION

**The stunning glazed facade  
looks upon both Greek  
Street & Russell Street.**

Contemporary bronze detailing  
mirrors the sophistication &  
atmosphere of the surrounding  
area. Neighbouring bars &  
restaurants offer a variety of  
opportunities when it comes to  
sophisticated after work drinks.



6TH FLOOR OFFICE SUITE





### Tenants Include:

TROUP  
BYWATERS  
+ ANDERS

CHRISTIE & CO

cornerstone

Vitality  
partners  
parkrun

met  
marketing

first intuition  
where people count

### Available Accommodation:

Unit	Sq Ft	Status	No. of Workstations
First (North Wing)	1,083	Fully fitted & furnished	12
Sixth	2,613	Fully fitted & furnished	31
Seventh	2,646	Part fitted	Up to 32
Total	6,360		

### Highlights & Specification:



Openable double glazed  
aluminium windows



EPC A



Shower and  
changing facilities



VRF air  
conditioning



Raised access  
floors



Male and female WCs  
to each floor



2 x passenger lifts



On-site  
concierge



1000 Mbps  
Bandwidth



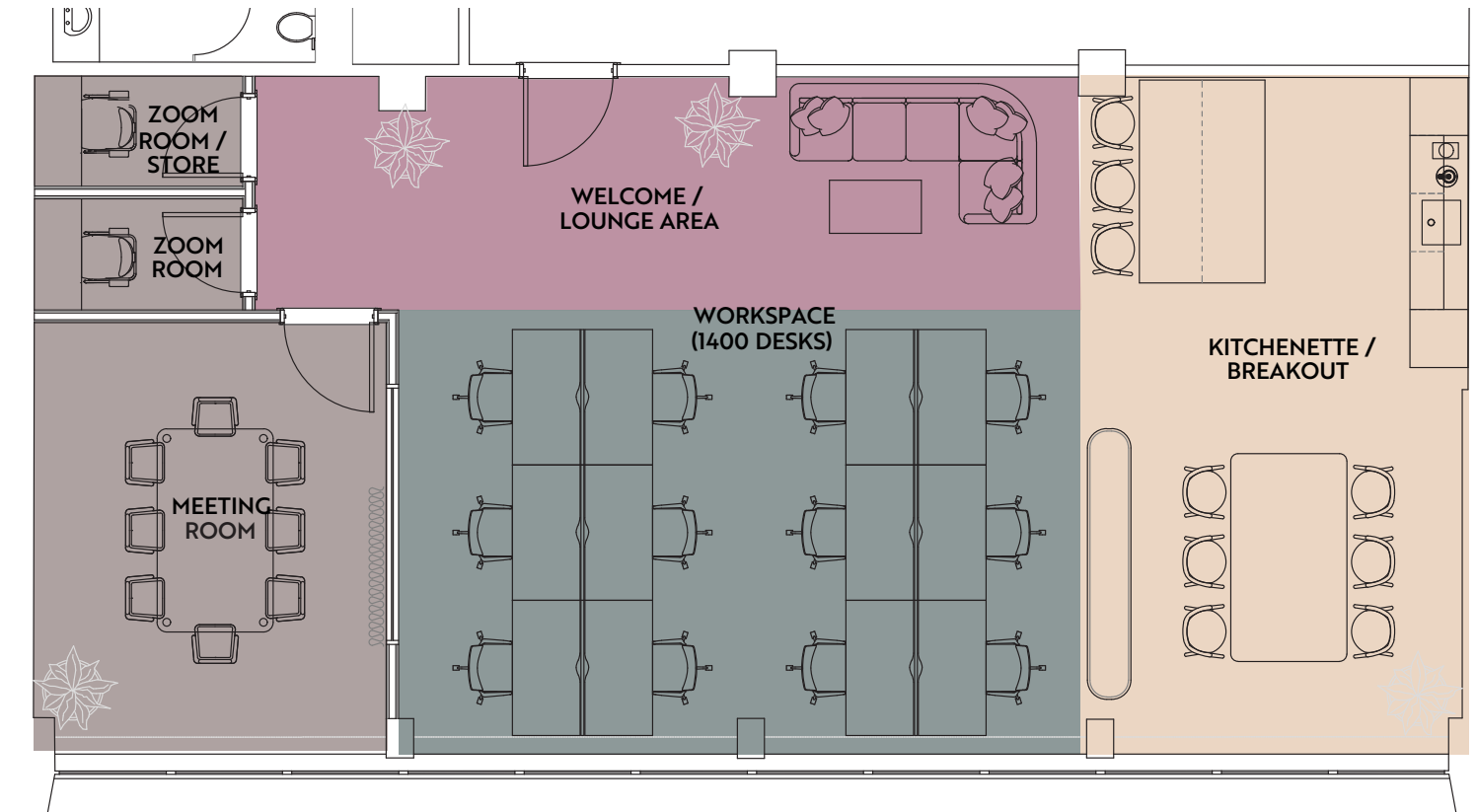
LED lighting



# FIRST FLOOR

1,083 Sq.Ft.

General Arrangement - Fully fitted and furnished suite



Arrival Area



Workspace - 12 desks



Breakout/Collaboration Space



1x Meeting Room & 2x Zoom Rooms

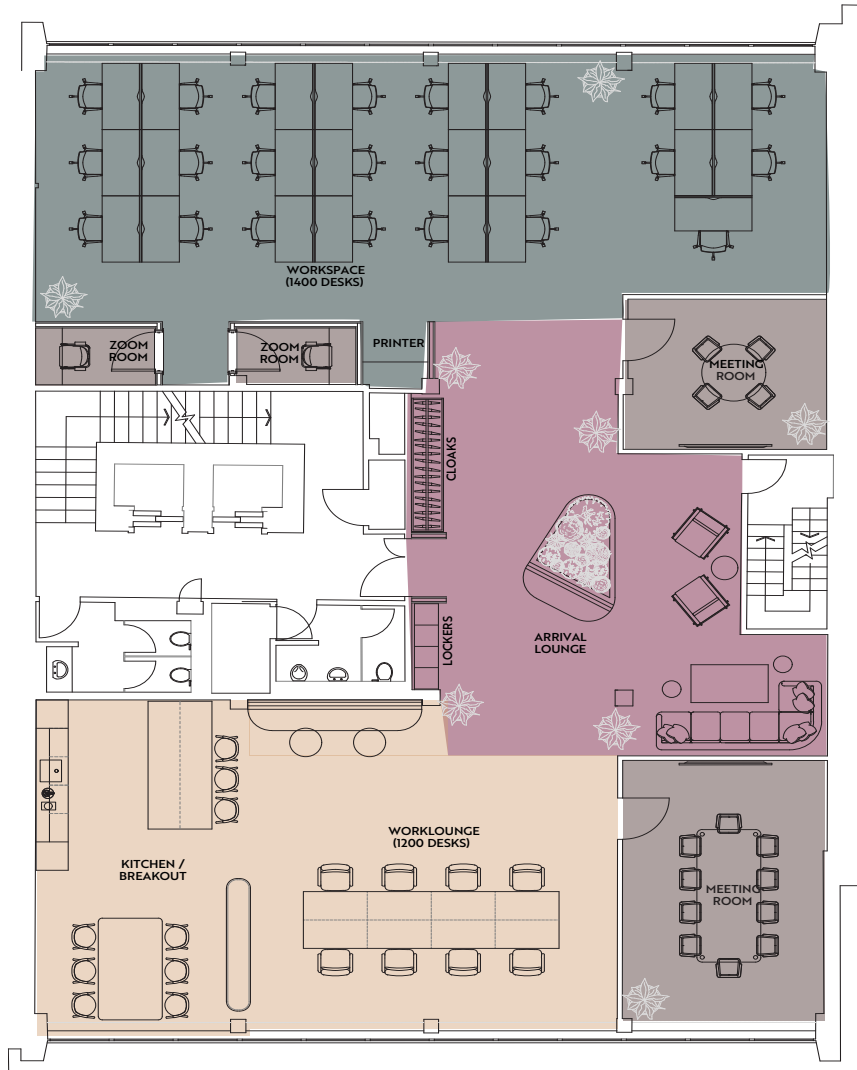




# SIXTH FLOOR

From 2,631 Sq. Ft.

General Arrangement - Fully fitted and furnished suite



Arrival Area



Workspace



Breakout/Collaboration Space



2x Meeting Room & 2x Zoom Rooms

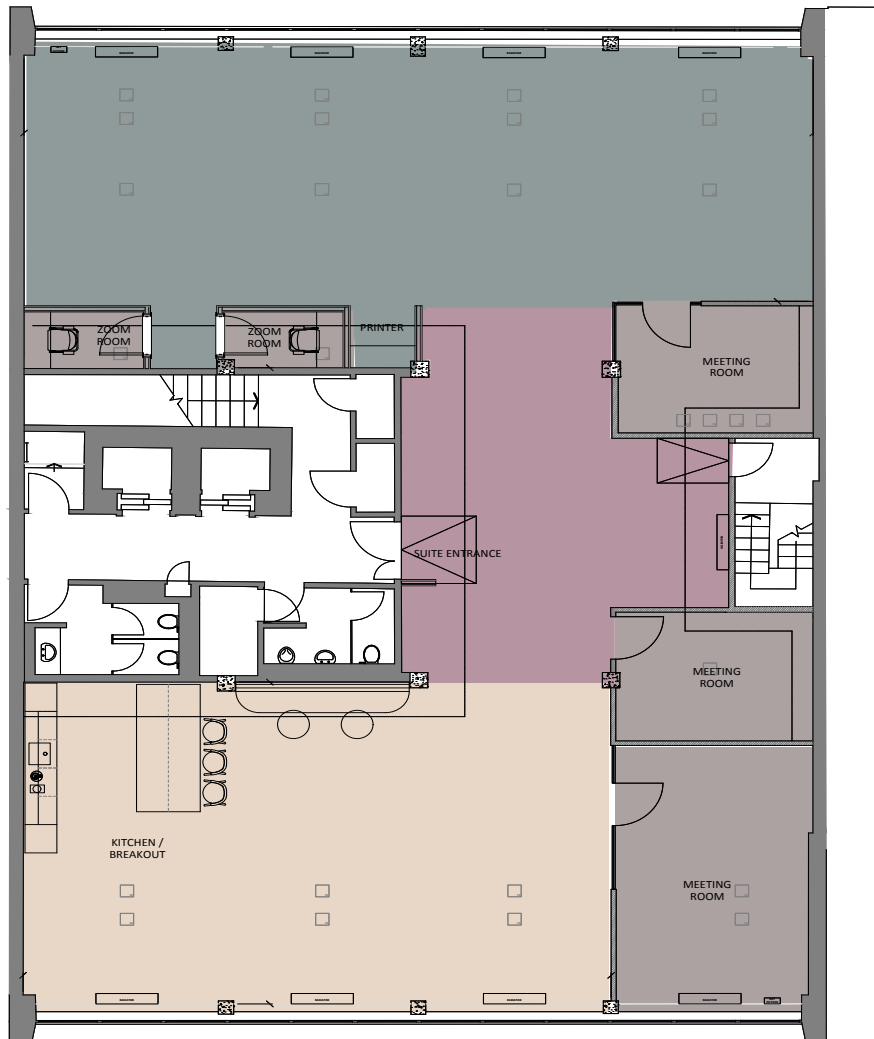




# SEVENTH FLOOR

From 2,646 Sq. Ft.

General Arrangement - Part Fitted Suite, ready for a bespoke furniture layout



Arrival Area



Workspace



Breakout/Collaboration Space



3x Meeting Room & 2x Zoom Rooms





# A PRIME LINK THROUGH THE CITY

The property is situated within the heart of Leeds' Commercial Business District fronting onto Greek Street. It benefits from an additional secondary frontage onto Russell Street which opens onto the wider Bond Court development.

It is equidistant between City Square and The Headrow and Leeds City Station is just a 3 minute walk from the subject property.



## Restaurants

- 1 Giggling Squid
- 2 San Carlo
- 3 Olive Tree Brasserie
- 4 Blackhouse
- 5 La Bottega Milanese
- 6 Indian Tiffin Room
- 7 Tattu
- 8 Dakota Hotel
- 9 Six By Nico

## Bars

- 1 Town Hall Tavern
- 2 All Bar One
- 3 The Alchemist
- 4 Neighbourhood
- 5 Be At One
- 6 Manahatta
- 7 Lost & Found
- 8 Katie O'Briens Irish Tavern

## Shopping

- 1 Trinity Leeds
- 2 Victoria Quarter
- 3 Harvey Nichols

## Office Occupiers

- 1 HSBC
- 2 Natwest RBS
- 3 Gateley
- 4 Deloitte
- 5 Channel 4
- 6 DLA Piper
- 7 Law Courts





## TWELVE GREEK STREET

LEEDS LS1

ALL ENQUIRIES:



**Nick Salkeld**

Nick.Salkeld@fljlttd.co.uk

**Harry Finney**

Harry.Finney@fljlttd.co.uk



**0113 244 6440**

property.jll.co.uk

**Sam Jamieson**

Sam.Jamieson@jll.com

**Emma Scutt**

Emma.Scutt@jll.com



MISREPRESENTATION ACT: Fox Lloyd Jones & JLL for themselves and for the vendors or lessors of this property, whose agents they are, give notice that: a) all particulars are set out as a general outline only for the guidance of intending purchasers or lessees, and do not comprise part of an offer or contract: b) all descriptions, dimensions, references to condition and necessary permissions for use and occupation and other details are given in good faith and are believed to be correct but any intending purchasers or tenants should not rely on them as statements or representations of fact but must satisfy themselves by inspection or otherwise as to the correctness of each of them. c) no person in the employment of Fox Lloyd Jones & JLL has any authority to make any representation or warranty whatsoever in relation to this property. Design and Production DS.EMOTION www.dsemotion.com SEPTEMBER 2025.