



HEALTHCARE / LEISURE / MIXED USE / RETAIL TO LET

## NEW RETAIL UNITS

Longford Park District Centre, Longford Park Road, Banbury, OX15 4GJ

LAST REMAINING, NEW BUILD, RETAIL OR LEISURE UNIT AT THE HEART OF  
LONGFORD PARK 1,000 NEWLY BUILT RESIDENTIAL UNITS WITH A  
FURTHER 825 SOON

1,603 SQ FT (148.92 SQ M)



**BNP PARIBAS  
REAL ESTATE**

[www.realestate.bnpparibas.co.uk](http://www.realestate.bnpparibas.co.uk)

## NEW RETAIL UNITS

Longford Park District Centre, Longford Park Road, Banbury, OX15

[TO REQUEST A VIEWING CALL US](#)



**BNP PARIBAS  
REAL ESTATE**

[www.realestate.bnpparibas.co.uk](http://www.realestate.bnpparibas.co.uk)

## DETAILS

### DESCRIPTION

Longford Park District Centre will comprises a Sainsbury Local convenience store, an Esquires Coffee, retail and leisure shops and a Busy Bees day nursery, supported by a 44 space shoppers car park.

### ACCOMMODATION

The accommodation comprises the following areas:

Name	sq ft	sq m	Availability
Unit - 1 (Sainsbury)	4,273	396.97	Let
Unit - 2 (Rumbles)	1,000	92.90	Let
Unit - 3	1,200	111.48	Under Offer
Unit - 4/5 (Esquires Coffee)	1,700	157.94	Let
Unit - 6	1,603	148.92	Available
Unit - Day Nursery (Busy Bees)	5,414	502.98	Let

### KEY FEATURES

- Longford Park is a community of 1,825 new homes situated to the south of Banbury town centre.
- The District Centre will be anchored by a new Sainsbury Local convenience store
- The scheme will be home to a new Busy Bees day Nursery
- Units pre-let to Esquires Coffee and Rumbles Fish Bar - 1 unit remaining
- The District Centre is scheduled to open in October 2026 - Now under construction
- Adjoining the District Centre is Longford Park primary school and Longford Park community Centre

### OUTGOINGS

- **Rent:** Rent on application
- **Rates:** To be assessed
- **Service charge:** To be confirmed

## NEW RETAIL UNITS

Longford Park District Centre, Longford Park Road, Banbury, OX15

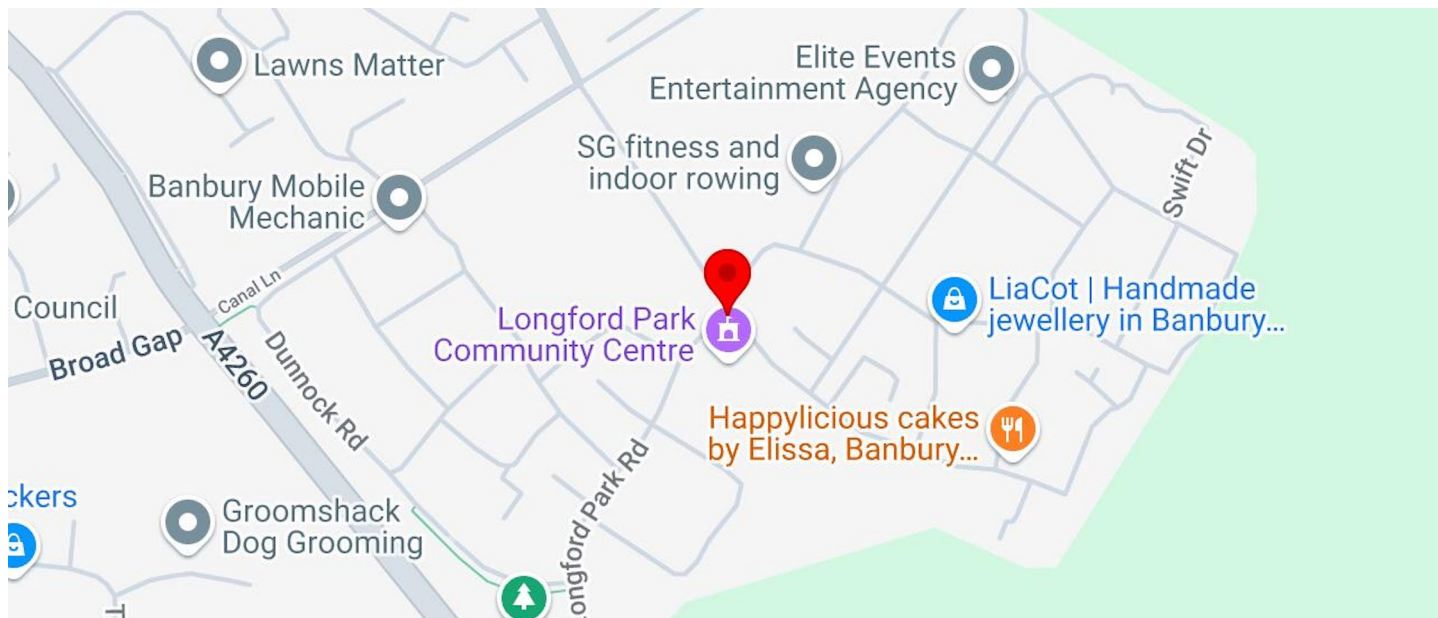
TO REQUEST A VIEWING CALL US



**BNP PARIBAS  
REAL ESTATE**

www.realestate.bnpparibas.co.uk

## LOCATION



Longford Park is approximately 1.8 miles south of Banbury town centre and 3 miles north of Junction 11 of the M42.

The District Centre lies at the heart of Longford Park and is clustered around the crossroads where the two main arterial routes through the scheme intersect. The District Centre is easily accessible from the Oxford Road (A4260).

Additionally, the District Centre is ideally positioned at the main gateway to Phase two of Longford Park, which will deliver further 825 new homes over the coming years.

## CONTACT US

Gavin Redrupp  
[gavin.redrupp@realestate.bnpparibas](mailto:gavin.redrupp@realestate.bnpparibas)

BNP Paribas Real Estate (Retail and Alternative Markets)

24 Savile Row, London, W1S 2ES

[www.realestate.bnpparibas.co.uk](http://www.realestate.bnpparibas.co.uk)

[realestate.enquiries@bnpparibas.com](mailto:realestate.enquiries@bnpparibas.com)  
[linkedin.com/company/bnp-paribas-real-estate/@BNPPRE\\_UK](https://www.linkedin.com/company/bnp-paribas-real-estate/@BNPPRE_UK)

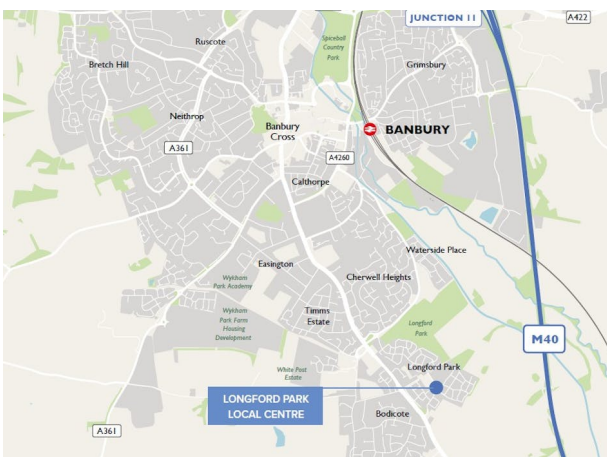
**NEW RETAIL UNITS, LONGFORD PARK DISTRICT CENTRE,  
LONGFORD PARK ROAD, BANBURY, OX15 4GJ**

TO REQUEST A VIEWING CALL US ON



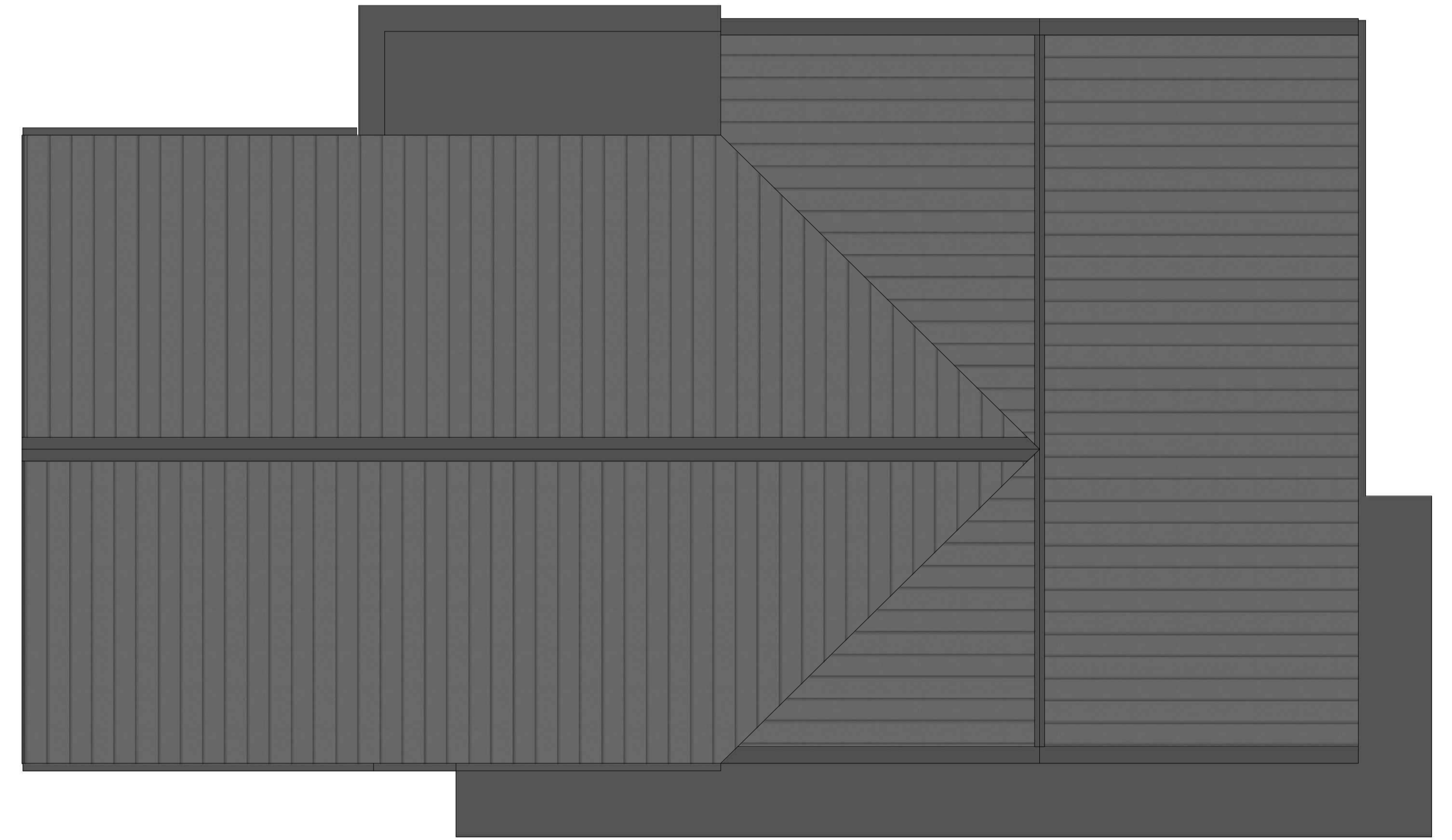
**BNP PARIBAS  
REAL ESTATE**

[www.realestate.bnpparibas.co.uk](http://www.realestate.bnpparibas.co.uk)

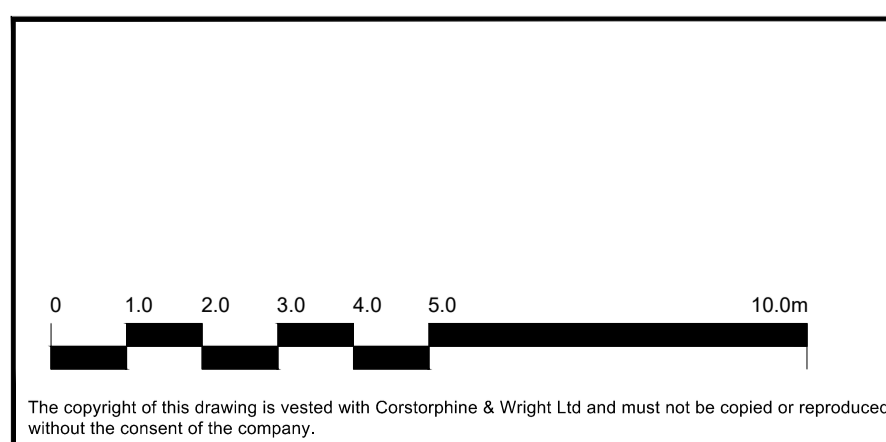




1 Proposed Ground Floor Plan  
1:100



2 Proposed Roof Plan  
1:100



P-02	Updated Room Areas	05-04-24	CH	CC
P-01	Updates to Nursery and Retail Unit	04-04-24	CH	CC
P-00	Initial Issue	27.03.24	JW	CH
Rev.	Description	Date	Drw.	CHK.




Client	HDD
Project	Longford Park Banbury
Drawing Title	Proposed Floor and Roof Plans
Drawing Status	PLANNING

**Corstorphine & Wright**  
 Tamworth Studio  
 5 Aldergate, Tamworth, B79 7DJ  
 01827 671 23  
 corstorphine-wright.com





Drawing No.	23981-0321	Revision	P-02
Drawn	JW	Checked	CH
Paper Size	A1	Scale	1:100
Date	26.03.24		



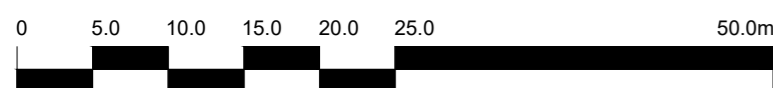
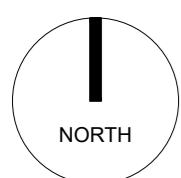
**Hard Landscaping Finishes Key**

-  Tarmac Roadway to Vehicle Access Areas and Delivery Bay
-  Block Paving Finish to Car Parking Bays and Service Area
-  Paved Footpath to Shop Frontages

**Boundary Treatments Key**

-  1.8m Hit & miss timber fence
-  2m Close boarded timber fence
-  450mm Timber knee rail
-  External Plant Unit

**1 PROPOSED SITE LAYOUT PLAN**  
1:500



The copyright of this drawing is vested with Corstorphine & Wright Ltd and must not be copied or reproduced without the consent of the company.

Rev	Description	Date	Drw	Chk
P-16	Updated Plot C Parking Layout	08.05.25	CH	CC
P-15	Updated Plot C Parking Layout	06.04.25	CH	CC
P-14	Sub-station image & EV demise removed	17.04.25	IH	CC
P-13	Updated to show external plant units & sub-station finishes / spec	24.03.25	CH	CC
P-12	Adjusted position of Sub-Station and parking, added detail to refuse store area	12.03.25	CH	CC
P-11	Added redline boundary to EV Car Parking to Plot C	24.01.25	CH	CC
P-10	Adjusted labelling to Plot A car park	20-01-25	CH	CC
P-09	Adjusted parking layout & EV Spaces to Plot C	20-12-24	CH	CC
P-08	Adjusted cycle parking numbers and car park layout	26-11-24	CH	CC
P-07	Updated plant enclosure fencing	27-09-24	CH	CC
P-06	Added parking space to layout, indicated unit divide	05-09-24	CH	CC
P-05	Updated site layout	03-09-24	CH	CC
P-04	Car parking and substation revised in line with client comments	29-08-24	CH	CC
P-03	Updated location of Sub-station and car parking configuration	06-08-24	CH	CC
P-02	Revised location of cycle store. Added sub-station to Plot C	05-08-24	CH	CC
P-01	Revised site layout to retail parking area	11.04.24	CH	CC
P-00	Initial Issue	27.03.24	CH	CC

P-17 Updated Plot C Parking Layout 13.05.25 CH CC

Client  
**HDD**

Project  
**Longford Park Banbury**

Drawing Title  
**Proposed Site Layout Plan**

Drawing Status  
**PLANNING**

**Corstorphine & Wright**

Tamworth Studio  
5 Aldergate, Tamworth, B79 7DJ  
01827 671 23

corstorphine-wright.com

Drawing No.  
**23981-0310**

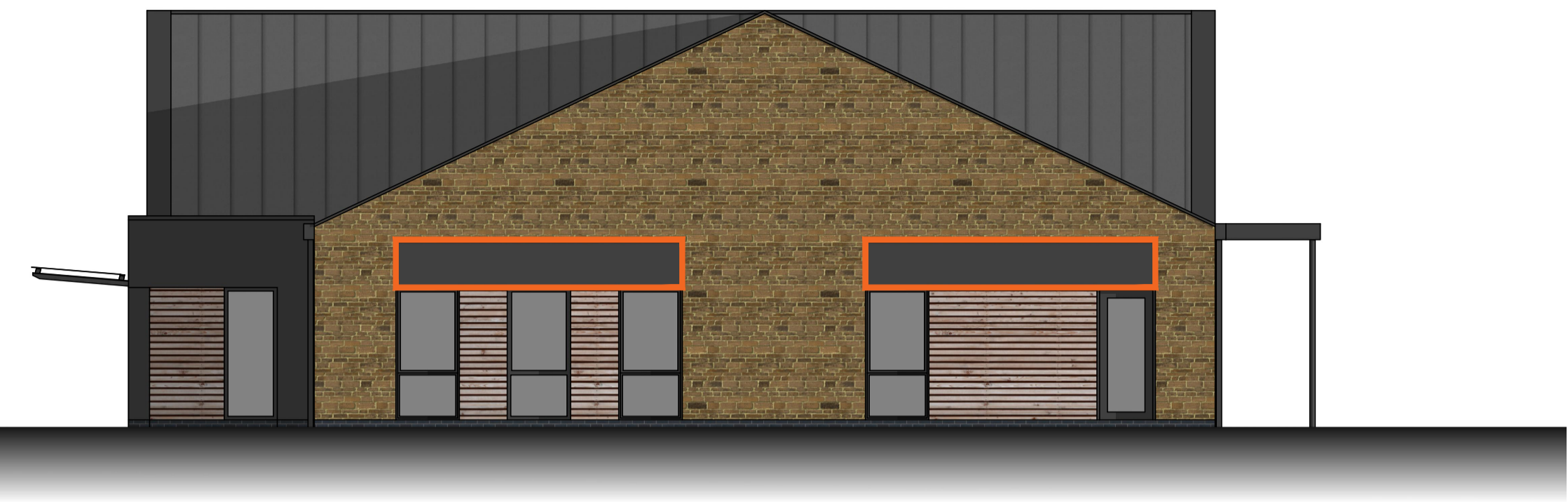
Drawn	Checked	Paper Size	Scale	Date
CH	CC	A2	1:500	21-03-24



Revision  
**P-17**



1 Proposed Front Elevation  
1:100



2 Proposed Side Elevation A  
1:100



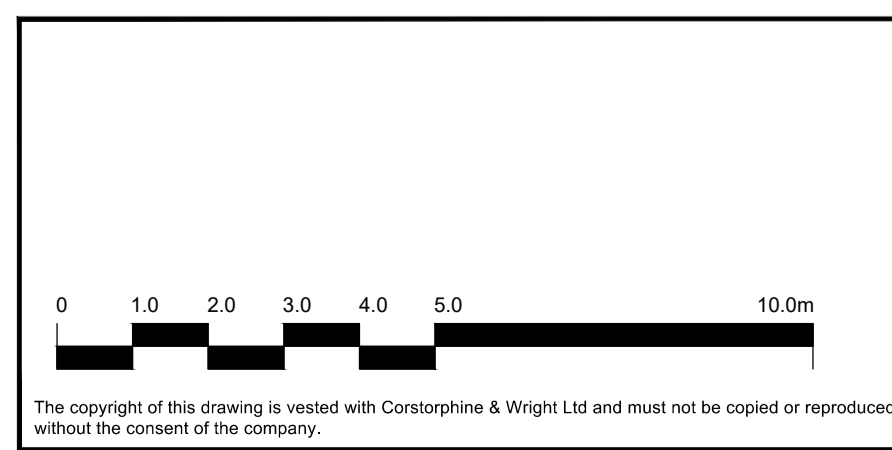
3 Proposed Rear Elevation  
1:100



4 Proposed Side Elevation B  
1:100

5 Materials Key

	Horton Stone		Composite profiled insulated roof panels
	Horizontal timber cladding		Powder coated aluminium window & door frame units
	powder coated projecting entrance canopy to Nursery		"Buff" colour facing brickwork
	Powder coated aluminium projecting canopy to Nursery		External Plant Unit
	Powder coated aluminium panels to head of entrance doors		Proposed Signage Zones to Nursery & Retail Units
	Powder coated aluminium box gutters & rwp's		



Rev	Description	Date	Drw	Chk
P-08	Materials updated	14.04.25	JW	CH
P-07	Materials updated	10.04.25	JW	CH
P-06	Updated to show external plant units	24-03-25	CH	CC
P-05	Revised position of Signage Zone, added canopy over entrance door	16-09-24	CH	CC
P-04	Updated in line with Client comments	29-08-24	CH	CC
P-03	Updated materials key	12-04-24	CH	CC
P-02	Added signage zones to units	08-04-24	CH	CC
P-01	Updated nursery and retail unit	04-04-24	CH	CC
P-00	Initial Issue	27.03.24	JW	CH

Client HDD		<b>Corstorphine &amp; Wright</b>	
Project Longford Park Branbury			
Drawing Title Proposed Elevations		Drawing No. 23981-0331	
Drawing Status PLANNING		Checked CH	Scale 1:100
		Paper Size A1	Revision P-08
		Date 20.03.24	