

INCENTIVES AVAILABLE

RECENTLY REFURBISHED
POTENTIAL TO SPLIT

 **12 MINUTES**
TO THE M40 MOTORWAY

Combined
2,700 KVA
Available

Industrial / Warehouse Unit
TO LET 65,471 sq.ft
MAY SPLIT

TO LET

Industrial / Warehouse Unit

65,471 sq.ft (6,082 sq.m)

Unit B1 Irton House, Warpsgrove Lane, Chalgrove, Oxfordshire, OX44 7TH

• Level loading doors • 6.3m eaves height • Allocated car parking • Warehouse PIR lighting

M **M[®]Core**
LCP UK

01384
400123

lcpgroup.co.uk



DESCRIPTION

Unit B1 Irton House comprises 3 interconnecting warehouse / industrial units of steel portal frame construction with interconnecting side and front loading doors with scope for rear loading doors to be installed. Connecting office and welfare accommodation is available at ground and first floor levels.

Unit B1 Irton House has been recently refurbished.

Warehouse

- 3 bays with double pitched roofs
- 6.3m eaves height rising to an apex of 10.7m
- Sprinkler system
- PIR lighting
- Interconnecting Speedor door
- 3 loading doors with scope for two additional rear dock levellers
- Front & rear yards
- Combined 2,700 KVA available

Office Accommodation

Connecting office accommodation and welfare available at ground and first floor levels totalling 13,409 Sq.ft (1,246 Sq.m).

External

Loading is provided by way of rear and side service yards. Ample staff and visitor car parking is available to the front and side of the property.

Areas (Approx. Gross Internal)

Warehouse	52,062 sq.ft	(4,837 sq.m)
Ground Floor Office	7,367 sq.ft	(684 sq.m)
First Floor Office	6,042 sq.ft	(561.30 sq.m)
Total	65,471 sq.ft	(6,082 sq.m)

Scope to split the unit, providing warehouse of 19,915 Sq.ft, and warehouse / offices of 45,556 Sq.ft



TERMS

The property is available by way of a new full repairing and insuring lease on terms to be agreed. Price on application.

BUSINESS RATES

Rateable Value of £320,000 (November 2024).
Any further enquiries should be directed to South
Oxfordshire Local Authority quoting reference
802684256301.

Link to assessment: <https://www.tax.service.gov.uk/business-rates-find/valuations/start/15022456000>

ESTATE CHARGE

A service charge of £0.41 per sq ft will be levied for the
maintenance of estate roads, landscaping and common
areas.

INSURANCE

The Landlord will insure the premises. The premiums will be
recovered from the Tenant.

ENERGY PERFORMANCE

Online the EPC is stated as D:83.

PLANNING

The property is considered suitable for B2 General
Industrial) or B8 (Warehousing) use. All interested parties
are to make their own specific enquiries directly with the
Local Planning Authority as to their intended use.

LEGAL COSTS

Each party is responsible for their own legal costs in
connection with the granting of the lease.

Neighbouring units:

PERGOLUX

MB Martin-Baker

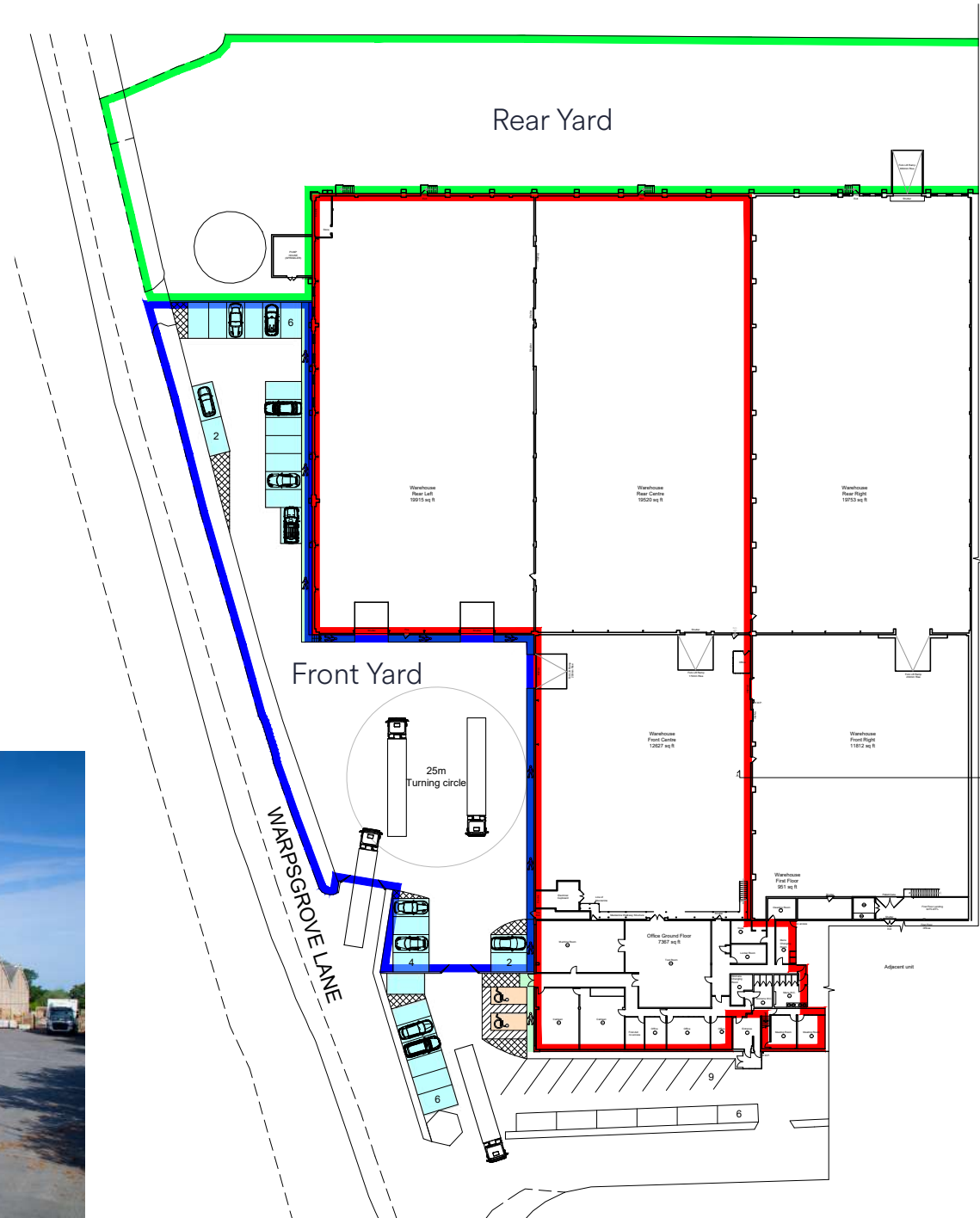
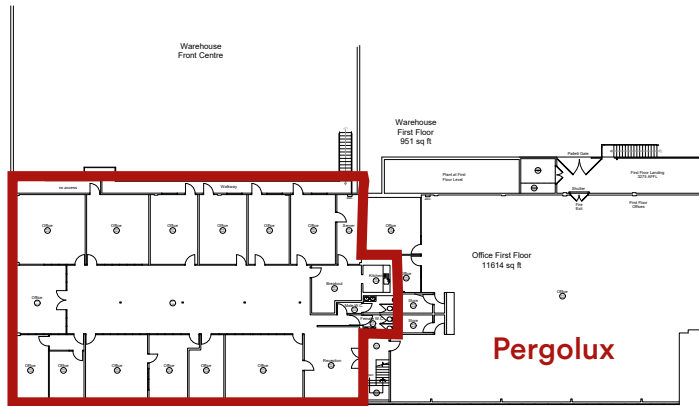
EMG



Ground Floor

- Large external yard to the rear
- External yard to the front
- 3 loading doors with scope for two additional rear dock levellers

First Floor Office



Unit B1 Irton House, Warpsgrove Lane, Chalgrove, Oxfordshire OX44 7TH



Location - OX44 7TH

Unit B1 Irton House is located on Warpsgrove Lane, approximately 1 mile north of the South Oxfordshire village of Chalgrove via Monument Road. The property is located 4 miles from Watlington and 3.5 miles from Stadhampton via the B480. Access to the M40 motorway is provided by either Junction 6 (7.2 miles) or Junction 7 (8 miles).

Lorry access is restricted to and from Junction 6 via Watlington; instead, they should use Junction 7 via Stadhampton. Unit B1 Irton House lies 13 miles southeast of Oxford and 48 miles west of Central London.

Thames Travel provides bus services running between Watlington and Oxford.

Travel (motorways)	Distance	Travel Time
M40 J6	7 miles	14 mins
M40 J7	8 miles	12 mins
M25 J16	31.8 miles	36 mins
M40 J1A	31.8 miles	36 mins

Travel (Towns/Cities)	Distance	Travel Time
Oxford	13 miles	27 mins
Heathrow Airport	35 miles	40 mins
Central London	48 miles	1 hr 23 mins
Birmingham	87 miles	1 hr 28 mins

Viewing
Strictly via prior appointment
with the appointed agents:

FIELDS
COMMERCIAL
01844 261121
fieldscommercial.com

Nick Johnson
07857 823188
nick@fields-property.co.uk

Tom Horgan
07522 452399
tom@fields-property.co.uk

Knight Frank
020 7629 8171
knightfrank.co.uk

Gus Haslam
07885 596877
gus.haslam@knightfrank.com

Charlie Perkins
07974 366158
charlie.perkins@knightfrank.com

M Core
LCP UK



David Charlton
07471 215144
dcharlton@lcpproperties.co.uk

MISREPRESENTATION ACT, 1967 London & Cambridge Properties Limited (Company Number 02895002) the registered office of which is at LCP House, Pensnett Estate, Kingswinford, West Midlands DY6 7NA its subsidiaries (as defined in section 1156 of the Companies Act 2006) associated companies and employees ("we") give notice that: Whilst these particulars are believed to be correct no guarantee or warranty is given, or implied therein, nor do they form any part of a contract. [We do our best to ensure all information in this brochure is accurate. If you find any inaccurate information, please let us know and where appropriate, we will correct it.] We make no representation that information is accurate and up to date or complete. We accept no liability for any loss or damage caused by inaccurate information. [This brochure gives a large amount of [statistical] information and there will inevitably be errors in it]. Intending purchasers or tenants should not rely on the particulars in this brochure as statements or representations of fact but should satisfy themselves by inspection or otherwise as to the correctness of each of them. We provide this brochure free of charge and on the basis of no liability for the information given. In no event shall we be liable to you for any direct or indirect or consequential loss, loss of profit, revenue or goodwill arising from your use of the information contained herein. All terms implied by law are excluded to the fullest extent permitted by law. No person in our employment has any authority to make or give any representation or warranty whatsoever in relation to the property. SUBJECT TO CONTRACT. We recommend that legal advice is taken on all documentation before entering into a contract. You should be aware that the Code of Practice on Commercial Leases in England and Wales strongly recommends you seek professional advice from a qualified surveyor, solicitor or licensed conveyancer before agreeing or signing a business tenancy agreement. The Code is available through professional institutions and trade associations or through the website <https://www.rics.org/uk/upholding-professional-standards/sector-standards/real-estate/code-for-leasing-business-premises-1st-edition/>. LCP's privacy notices that apply to its use of your personal information are at www.lcpgroup.co.uk/policies. The privacy notice that applies to you will depend on the nature of your relationship with LCP, and in some cases more than one may apply to you. LCP's privacy policy giving a high level overview of how LCP approaches data protection and your personal information can be found at www.lcpproperties.co.uk/uploads/files/LCP-Privacy-Web-and-Data-Policy-May-2018.pdf.