



# **FLEETS CORNER**

**BUSINESS PARK**

## **TO LET**

MODERN  
OFFICES  
IN PROMINENT  
BUILDING

- 6,233 - 12,466 SQ FT
- EXCELLENT CAR PARKING  
1 SPACE PER 249 SQ FT
- 24/7 SECURITY
- REFURBISHED
- OPEN PLAN WITH EXPOSED  
FINISHES
- ACCESS FROM WATERLOO  
ROAD, NUFFIELD ROAD  
AND HATCHPOND ROAD
- AVAILABLE TOGETHER  
OR AS THREE INDIVIDUAL  
FLOORS

> [fleetscorner.com](https://fleetscorner.com)



### **FLEETSBRIDGE HOUSE, FLEETS CORNER BUSINESS PARK**

2<sup>ND</sup> & 3<sup>RD</sup> FLOORS, WATERLOO ROAD, POOLE, DORSET, BH17 0HL





Recently  
Extensively  
Refurbished



VRF  
Air  
Conditioning



Excellent Car  
Parking Ratio  
1:249 sq ft



Nearby  
Retail/Leisure  
Facilities



Two  
Passenger  
Lifts



Shower/  
Wash  
Facilities



EV  
Charging  
Points



Excellent  
EPC Rating  
B - 49



24/7  
On Site  
Security



Excellent  
Transport  
Links



**Extensively refurbished offices**  
from 6,233 - 12,466 sq ft



**FLEETSBRIDGE HOUSE, FLEETS CORNER BUSINESS PARK**  
2<sup>ND</sup> & 3<sup>RD</sup> FLOORS, WATERLOO ROAD, POOLE, DORSET, BH17 0HL

**REF:** o21370



THE BIG  
YELLOW  
SELF  
STORAGE  
COMPANY

the  
gym  
find your fit

SMYTHS

A3049

FLEETS  
CORNER  
BUSINESS PARK

FLEETSBRIDGE HOUSE

A349

TESCO  
extra

Nuffield Industrial Estate

LUSH  
FRESH HANDMADE COSMETICS

selco BUILDERS  
WAREHOUSE

LIDL

Travelodge

STARBUCKS  
COFFEE

SUBWAY

BURGER  
KING

Domino's  
Pizza

FLEETSBRIDGE HOUSE, FLEETS CORNER BUSINESS PARK

2ND & 3RD FLOORS, WATERLOO ROAD, POOLE, DORSET, BH17 0HL

REF: o21370



## Location

Fleets Corner Business Park is a prime, mixed-use park, benefiting from bold prominence to the A349 Waterloo Road to the west and A3049 dual carriageway to the East and extends to approximately 27 acres bounded by Hatchpond Road to the north, Fleets Corner and Nuffield Road to the south.

The Estate fronts the Fleets Corner Roundabout from which the A35 provides part dual carriageway communications westwards to Dorchester and beyond.

From Fleets Corner the A349 connects northwards to the A31 which provides dual carriageway access to the M27 and M3 motorway networks and ultimately London beyond.



## Amenities

The following amenities are located in the immediate vicinity:

- Starbucks Drive-thru (On site)
- Travelodge
- Tesco
- David Lloyd Poole
- Subway
- Patisserie Mark Bennett
- Burger King

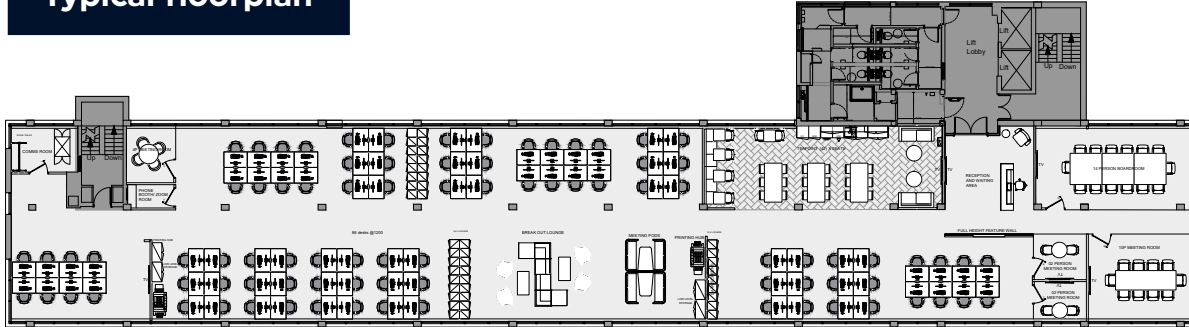


## FLEETSBRIDGE HOUSE, FLEETS CORNER BUSINESS PARK

2<sup>ND</sup> & 3<sup>RD</sup> FLOORS, WATERLOO ROAD, POOLE, DORSET, BH17 0HL

REF: o21370

## Typical floorplan



## Description

Fleetsbridge House forms part of the Fleets Corner Business Park and benefits from extensive frontage to the A349 Waterloo Road. A new Starbucks has just opened at the front of the site and the new Travelodge is due for completion in March 2021.

The building is arranged over six storeys and is accessed from a communal entrance on the ground floor where there is a refurbished communal reception and break out area leading to a core with two lifts and stairs, providing access to the upper floors.

## Summary of Accommodation

	Sq m	Sq ft
Second floor	579	6,233
Third floor	579	6,233
<b>Total net internal area approx.</b>	<b>1,158</b>	<b>12,466</b>

## Parking

The building offers an excellent parking ratio of 1 space per 249 sq ft.

Second floor	25 car spaces
Third floor	25 car spaces

Tenants will also have the right to use the communal EV charging points.

## Specification

The floors have been refurbished to include the following:

- New VRF air conditioning system with zoned flexibility
- PIR sensor LED lighting throughout
- Exposed services with new ceilings
- Perimeter trunking
- Excellent natural light
- 2 passenger lifts
- New WCs and shower facilities
- Recently refurbished main reception and break out area
- New cycle storage units

## FLEETSBRIDGE HOUSE, FLEETS CORNER BUSINESS PARK

2<sup>ND</sup> & 3<sup>RD</sup> FLOORS, WATERLOO ROAD, POOLE, DORSET, BH17 0HL

REF: o21370

## Gallery



### **FLEETSBRIDGE HOUSE, FLEETS CORNER BUSINESS PARK**

2<sup>ND</sup> & 3<sup>RD</sup> FLOORS, WATERLOO ROAD, POOLE, DORSET, BH17 0HL

**REF:** o21370



## Lease

The floors are available individually or together, by way of new full repairing and insuring leases for negotiable terms, incorporating upwards only open market rent reviews.



## Rent

**£18 per sq ft** exclusive of rates, VAT, service charge, insurance premium and all other outgoings.



## Service Charge

A service charge is payable in respect of the upkeep and maintenance of the estate and also in respect of the maintenance, repair and upkeep of the common parts of Fleetsbridge House. Further information is available upon request.



## Rateable Values

To be reassessed.



## EPC Rating

B - 48



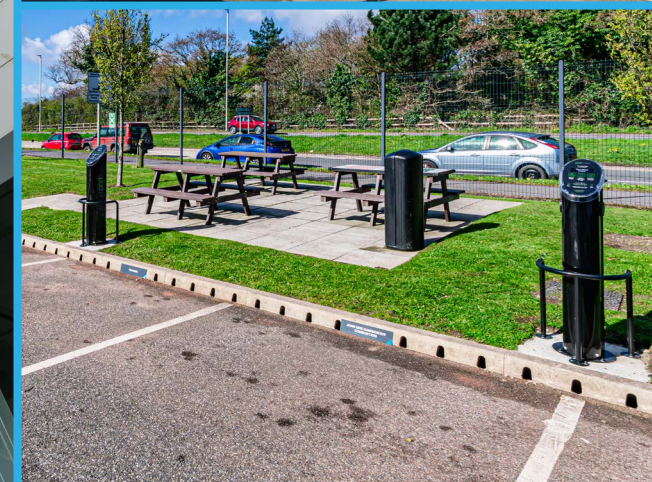
## Legal Costs

As is customary, an incoming tenant is to be responsible for the landlord's reasonable legal costs incurred in the transaction.



## VAT

Unless otherwise stated terms are strictly exclusive of Value Added Tax and interested parties must satisfy themselves as to the incidence of this tax in the subject case.



# FLETSBRIDGE HOUSE, FLETS CORNER BUSINESS PARK

2<sup>ND</sup> & 3<sup>RD</sup> FLOORS, WATERLOO ROAD, POOLE, DORSET, BH17 0HL

REF: o21370



## Viewing

Strictly by prior appointment through the joint sole agents Goadsby and CBRE through whom all negotiations must be conducted.



### **James Edwards**

james.edwards@goadsby.com  
07801 734797



### **Emma Lockey**

emma.lockey@cbre.com  
02380 206312

These particulars are believed to be correct, but their accuracy is not guaranteed and they do not form an offer or contract. STRICTLY SUBJECT TO CONTRACT, ALL MEASUREMENTS APPROXIMATE. Agents note: At no time have we undertaken a structural survey and services have not been tested. Interested parties should satisfy themselves as necessary, to the structural integrity of the premises and condition/working order of services, plant or equipment.

## The Code For Leasing Business Premises

The Code for Leasing Business Premises in England and Wales strongly recommends you seek professional advice from a surveyor or solicitor before agreeing or signing a business tenancy/lease agreement. The Code is available **HERE**.



## **FLEETSBRIDGE HOUSE, FLEETS CORNER BUSINESS PARK**

2<sup>ND</sup> & 3<sup>RD</sup> FLOORS, WATERLOO ROAD, POOLE, DORSET, BH17 0HL

**REF:** o21370

**FLEETS  
CORNER  
BUSINESS PARK**



**FLEETSBRIDGE HOUSE, FLEETS CORNER BUSINESS PARK**

2<sup>ND</sup> & 3<sup>RD</sup> FLOORS, WATERLOO ROAD, POOLE, DORSET, BH17 0HL

**REF:** o21370