

# 115 PARK STREET

LONDON, W1K 7AP



Sanderson  
Weatherall

# TO LET

1,122 to 2,274 sq ft  
£105 per sq ft



## DESCRIPTION

The available accommodation comprises the third and fourth floors, providing newly refurbished, fully fitted office space of a high standard. The building occupies a prominent corner position, ensuring excellent levels of natural light throughout. Additional amenities include a manned reception, secure bicycle storage, shower facilities and a passenger lift.

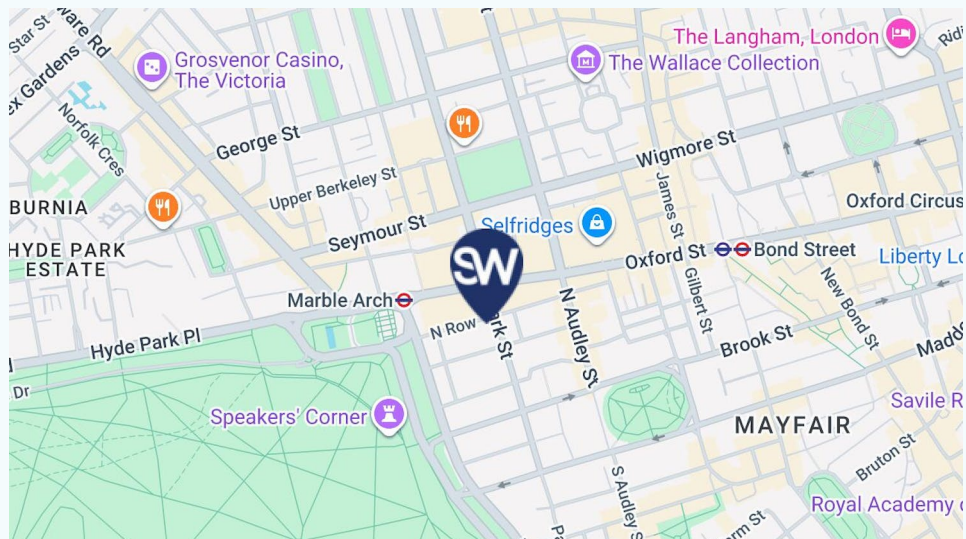
## LOCATION

115 Park Street is positioned near both Hyde Park and Grosvenor Square, this property enjoys one of London's most prestigious and desirable locations. A wide selection of boutique shops, cafés, renowned restaurants and stylish bars are situated just moments away, including Scott's, The Barley Mow and Corrigan's Mayfair with its Dickie's Bar.

Marble Arch Underground station (Central line) and Bond Street Underground station (Central, Jubilee and Elizabeth lines) are both within a short walk, offering excellent transport links.

## KEY FEATURES

- Newly refurbished CAT A+ floors
- Manned Reception
- Passenger Lift
- Shower facilities
- Air Conditioning

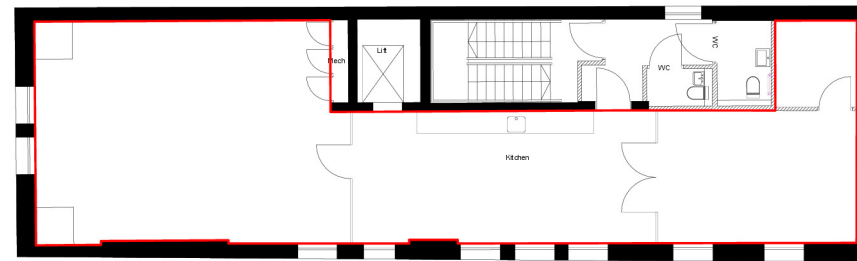
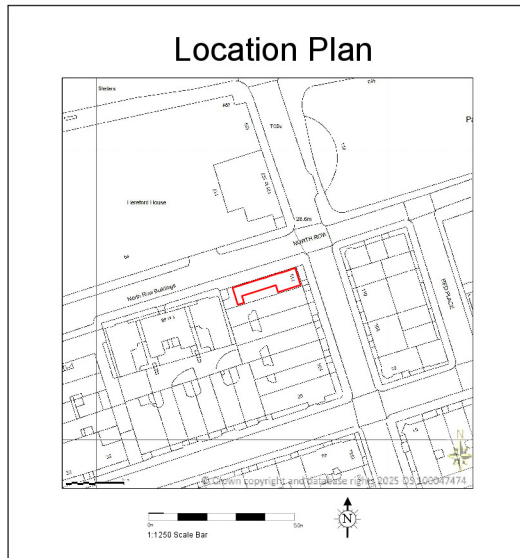


# 4TH FLOOR LEASE PLAN

1,122 to 2,274 sq ft  
£105 per sq ft



REFERENCES



Fourth Level

## Park Street

115 Park Street  
London  
W1K 7AP

Drawing Name  
Fourth Level Lease Plan

Date	Revision	Project Number	Description	Rev
13/02/2025	00	25.02.3194	Property Survey	0.0

REFERENCE KEY



Scale 1:100

sterlingtemple

0203-4639225  
www.sterlingtemple.com

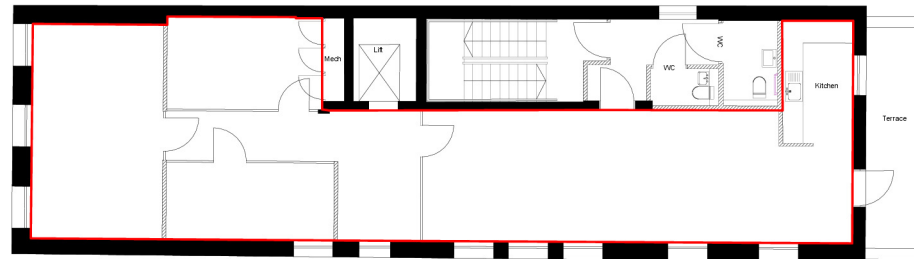
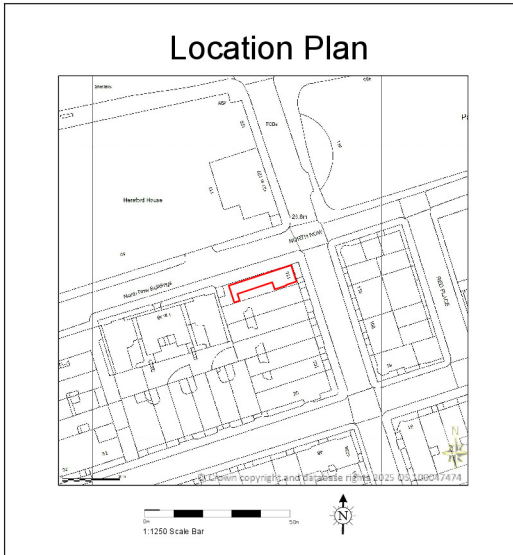
# 3RD FLOOR LEASE PLAN

1,122 to 2,274 sq ft  
£105 per sq ft



REFERENCES \_\_\_\_\_

## Location Plan



Third Level

## Park Street

115 Park Street  
London  
W1K 7AP

Drawing Name  
Third Level Lease Plan

Date	Revision	Project Number	Description	Rev
13/02/2025	00	25.02.3194	Property Survey	0.0

REFERENCE KEY



Scale 1:100

sterlingtemple

0203 4639225  
www.sterlingtemple.com

# GALLERY

1,122 to 2,274 sq ft  
£105 per sq ft



# ACCOMMODATION

1,122 to 2,274 sq ft  
£105 per sq ft



Name	sq ft	Rent (sq ft)	Rates Payable (sq ft)	Service Charge (sq ft)	Total /sq ft	Total year	Availability
4th	1,122	£105	£41	£24	£170	£190,740	Available
3rd	1,152	£105	£41	£24	£170	£195,840	Available
<b>Total</b>	<b>2,274</b>	<b>£105</b>	<b>£41</b>	<b>£24</b>	<b>£170</b>	<b>£386,580</b>	

# MORE DETAILS

1,122 to 2,274 sq ft  
£105 per sq ft



## RENT

£105 per sq ft

## BUSINESS RATES

Rates Payable: £41 per sq ft

## AVAILABILITY

Available Immediately

## SERVICE CHARGE

£24 per sq ft

## LEASE

New Lease

## TERMS

New Lease

## ADDITIONAL INFORMATION

- [View Website](#)

For further information or to arrange a viewing please contact

JAMES HARRISON

07795 265 271

james.harrison@sw.co.uk

KERRY SANDERS

07850843375

kerry.sanders@sw.co.uk



Sanderson  
Weatherall

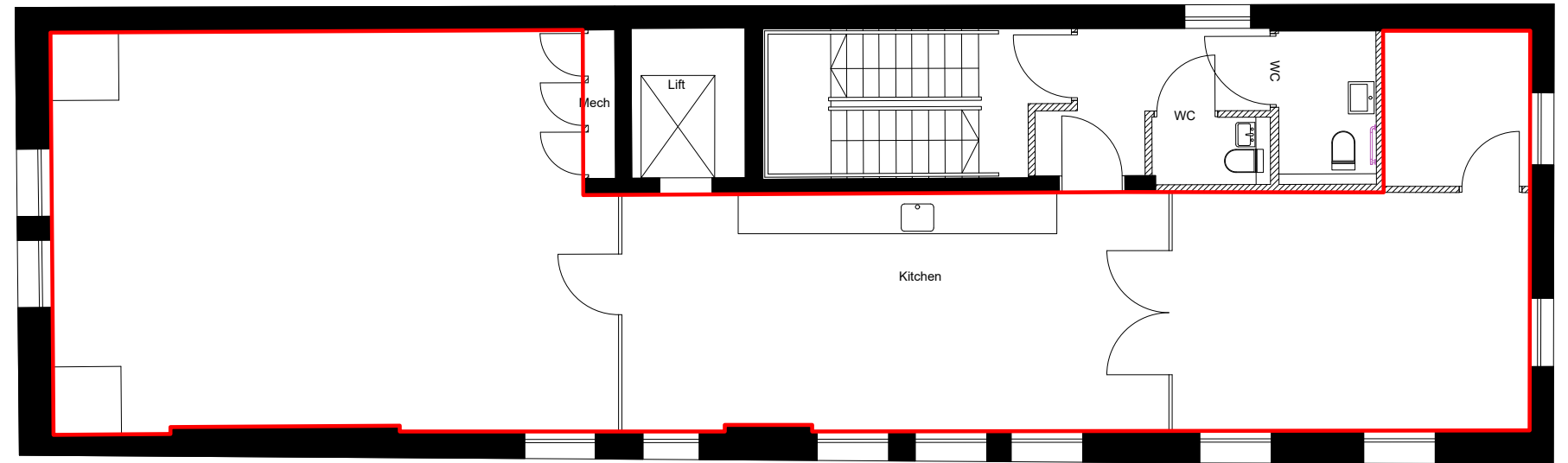
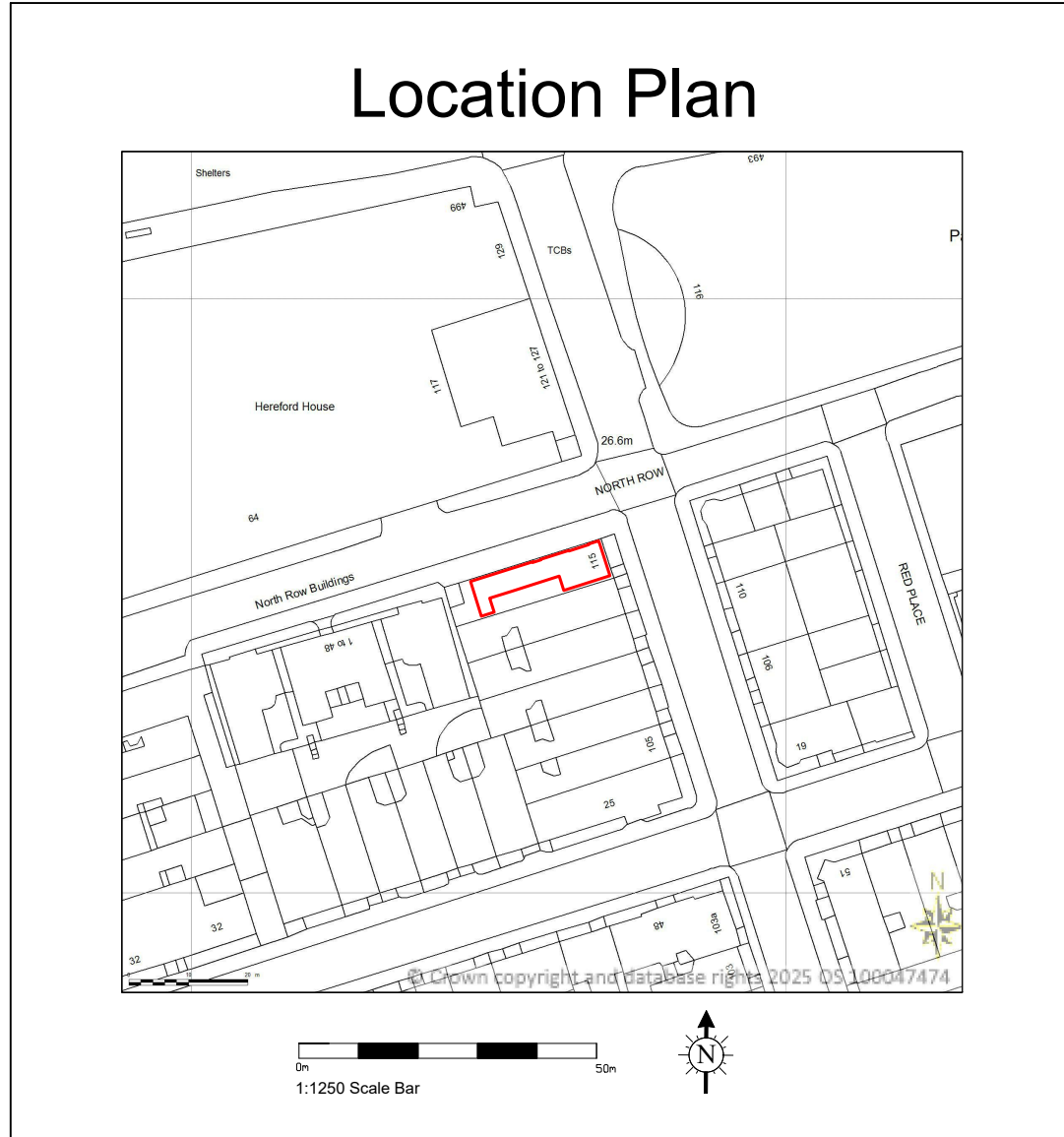
0800 122 3050

enquiries@sw.co.uk

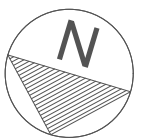




# Location Plan



Fourth Level



# Park Street

115 Park Street  
London  
W1K 7AP

Drawing Name  
Fourth Level Lease Plan

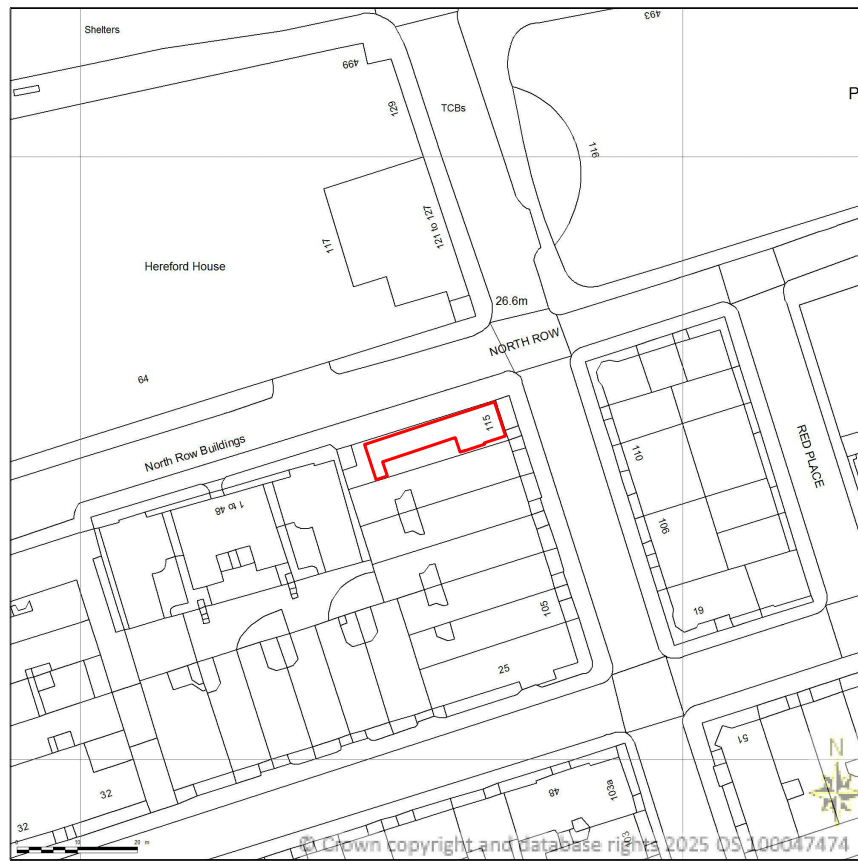
Date	Revision	Project Number	Description	Rev
13/02/2025	00	25.02.3194	Property Survey	0/0

REFERENCE KEY

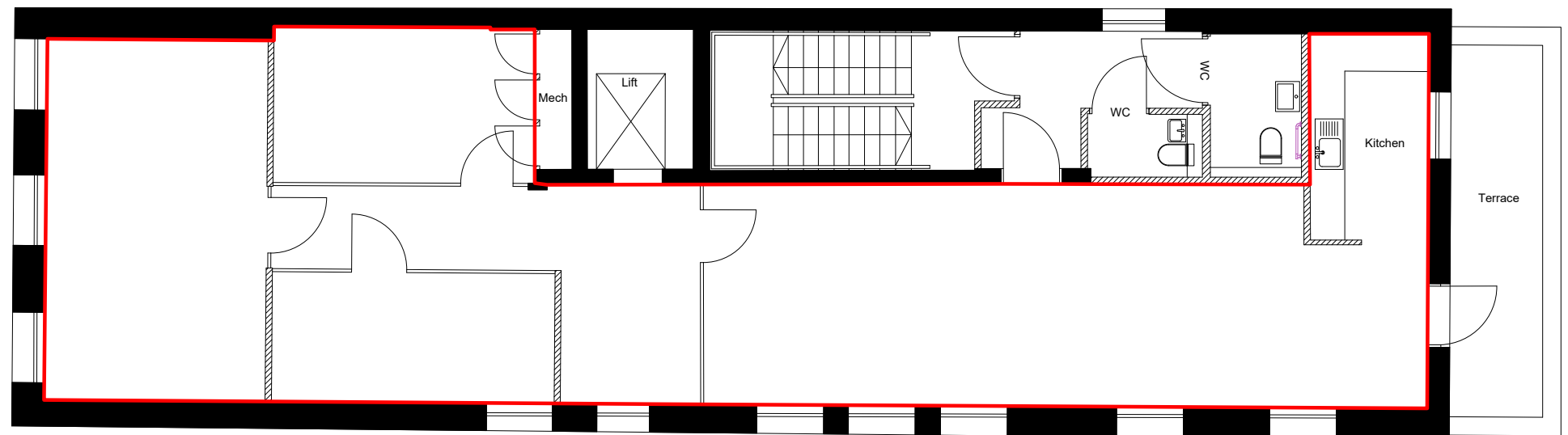
sterlingtemple

0203 4639225  
www.sterlingtemple.com

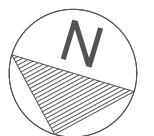
# Location Plan



0m 50m  
1:1250 Scale Bar



Third Level



0m 5  
Scale 1:100

## Park Street

115 Park Street  
London  
W1K 7AP

Drawing Name  
Third Level Lease Plan

Date	Revision	Project Number	Description	Rev
13/02/2025	00	25.02.3194	Property Survey	0/0

REFERENCE KEY

sterlingtemple

0203 4639225  
www.sterlingtemple.com