

Unit 2

Gladstone Business Park, Oldham, OL4 1AX

BC REAL ESTATE



TO LET

2,936 SQ FT
(272.76 SQ M)

A modern warehouse unit

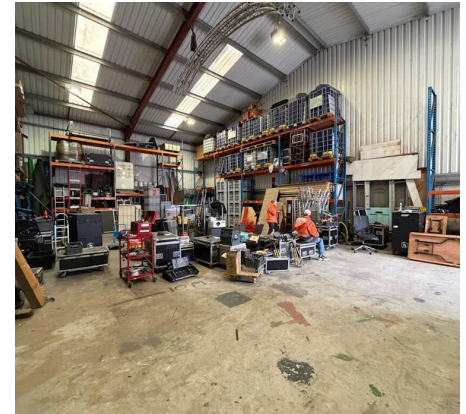
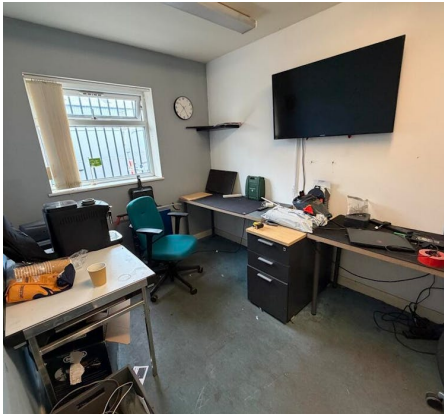
- 5.4metre eaves
- 7.6metres to the apex
- office, kitchen and WCs
- electric level access loading door

0161 636 9202 | bcrealestate.co.uk



Unit 2

Gladstone Business Park, Oldham, OL4 1AX



Summary

Available Size	2,936 sq ft / 272.76 sq m
EPC	Upon enquiry

Description

The property comprises a mid terraced modern warehouse of steel portal frame construction beneath a pitched steel sheet roof with part brick/part blockwork/part steel clad elevations. There is a section of office, kitchen, WC's facilities with mezz storage above.

The unit has electric roller shutter loading door access, an eaves height of 5.4m and apex of 8.8m.

Location

The property is located on the east side of Gladstone Street, 1 mile east of Oldham Town Centre. Junction 2 of the M60 motorway is approx. 3 miles south west.

Accommodation

The accommodation comprises the following areas:

Name	sq ft	sq m	Availability
Unit	2,936	272.76	Available
Total	2,936	272.76	

Viewings & Further information



John Barton

0161 636 9202 | 07501773672

john@bcrealestate.co.uk