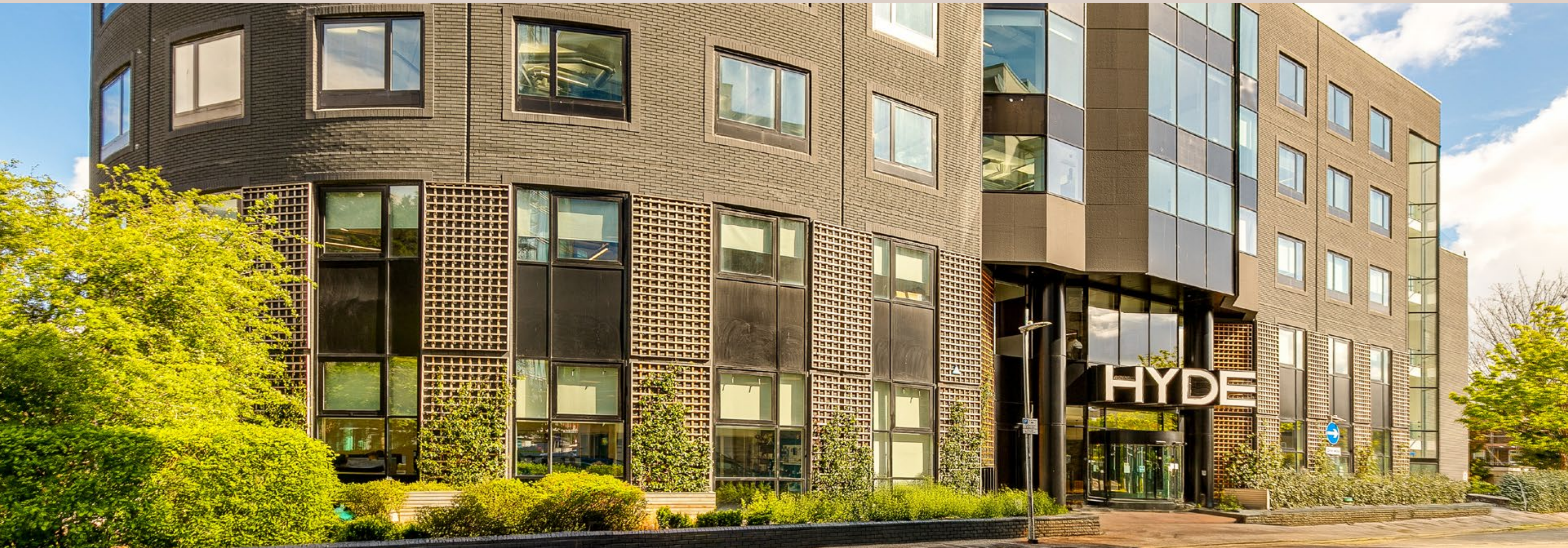


HYDE

A workplace that works for you.

Clarendon Road,
Watford, WD17 2PU

TO LET





HYDE, Watford – a workplace that works for you.

HYDE presents flexible floor plates offering from 3,184 sq ft up to 26,393 sq ft of available space, with unrivalled parking at a ratio of 1:274 sq ft, homely breakout spaces and a communal roof top terrace.



Vicarage Road Stadium

Watford Station

Cassiobury Park

Leonardo Hotel

Atria Shopping Centre

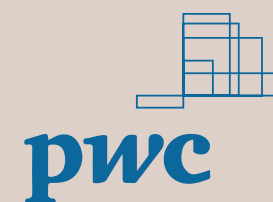
5 MINUTES

Connected. Considered.

HYDE

Home to major national and multi-national companies.

Clarendon Road plays host to a spread of bluechip occupiers, who take advantage of Watford's exceptional accessibility to London and the rest of the UK, via National Rail, London Underground and the motorway networks.



HYDE



“The project was a real opportunity to domesticate a commercial premises. We focused on creating a series of spaces that feel comfortable and homely, and touches of domestic design feature throughout the building - from the intricate Victorian tiling to rustic Hardwick limestone floors”

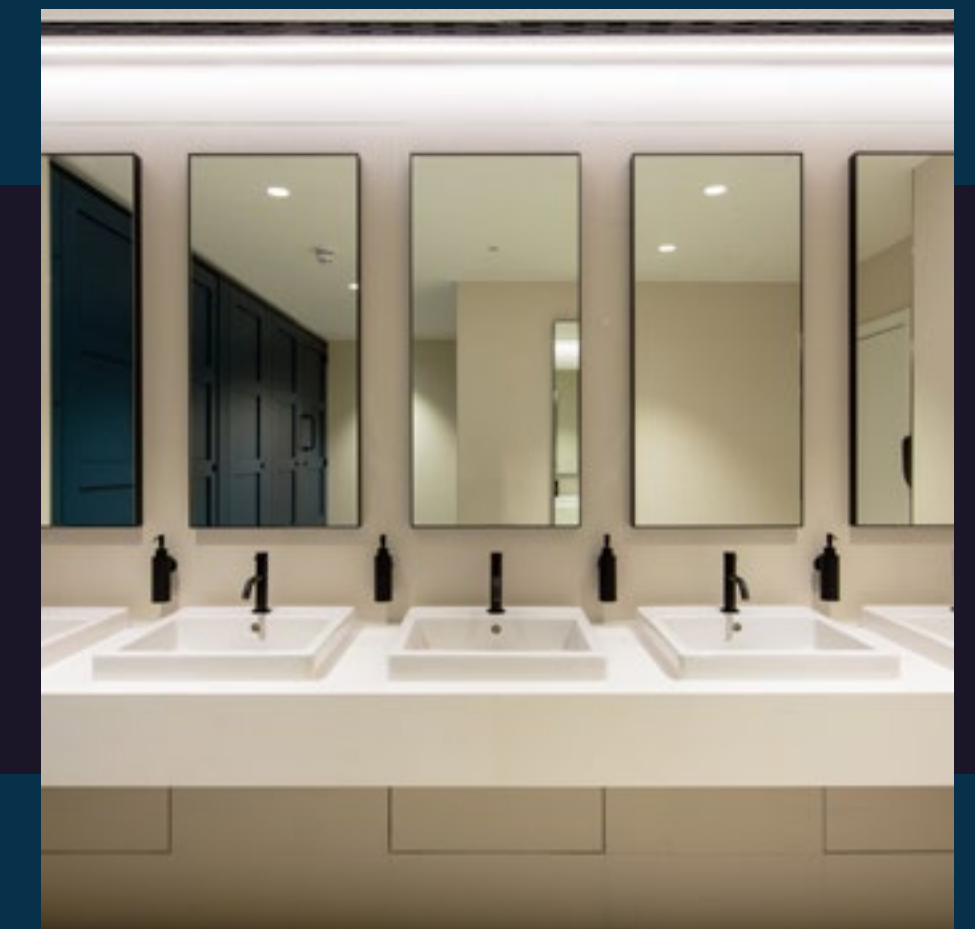
- Chris Sutton, Suttonca, HYDE Architects



Always ready. Always seamless.

Hyde, Watford is a workplace designed to inspire, energise and support your people every day – light-filled spaces, smart design and an environment that makes work feel effortless.

The atrium has been reimagined as a breakout space with a coffee point, while the office features increased ceiling heights and exposed services. A south-facing communal roof terrace with pergolas, seating, and planting completes the upgrade.



Feel good about your workplace.

At **HYDE**, wellbeing is at the heart of the workplace. With green spaces, cycle storage, and energy-efficient design, this is an environment where people feel good about coming to work.

- o Feel healthier with bright, naturally lit workspaces that promote focus and positivity.
- o Know your workplace aligns with your values – Hyde’s sustainable design reduces environmental impact and supports corporate ESG goals.
- o Experience a workplace that cares – from shower facilities for cyclists to outdoor spaces for fresh air and relaxation.
- o Enjoy the benefits of a workspace that prioritises people – reducing stress, improving comfort, and fostering a positive work culture.

HYDE is a workplace that enhances happiness, performance, and purpose – because where you work shapes how you feel.

HYDE

Smart. Sustainable.

Built for the future. HYDE blends innovation with wellness-focused design to create a smarter way to work.



Airscore Platinum

Certification for indoor air quality in the built environment.



WiredScore Gold

Certification for digital connectivity and smart technology.



EPC Rating B

Energy Performance Certificate, a document that assesses a building’s energy efficiency.



SKA Gold rating

An environmental assessment method, benchmark & standard for non-domestic fit outs.



Six EV charging points



New cycle & changing facilities

Situated in the heart of an evolving town.



Retail Therapy
Find all your favourites
at Harlequin Watford

Park Life
Take a stroll around
Cassiobury Park



A Taste of Hollywood
Home to the Warner Bros.
Harry Potter Studios



Stay Active
Fit in the lunchtime
HIIT session

Indulge & Entertain
The Grove Golf
and Spa hotel



**Premier Sporting
Entertainment**
High Quality football
at Vicarage Road Stadium



Out & About In Watford.

Retail

Harlequin Watford Shopping Centre	1
Marks & Spencer	2
Next	3
The Florist	4
Pret	5
Caffé Nero	6
Côte Brasserie	7
Las Iguanas	8
Wagamama	9

Hotels

Leonardo Hotel	10
Holiday Inn	11
Premier Inn	12

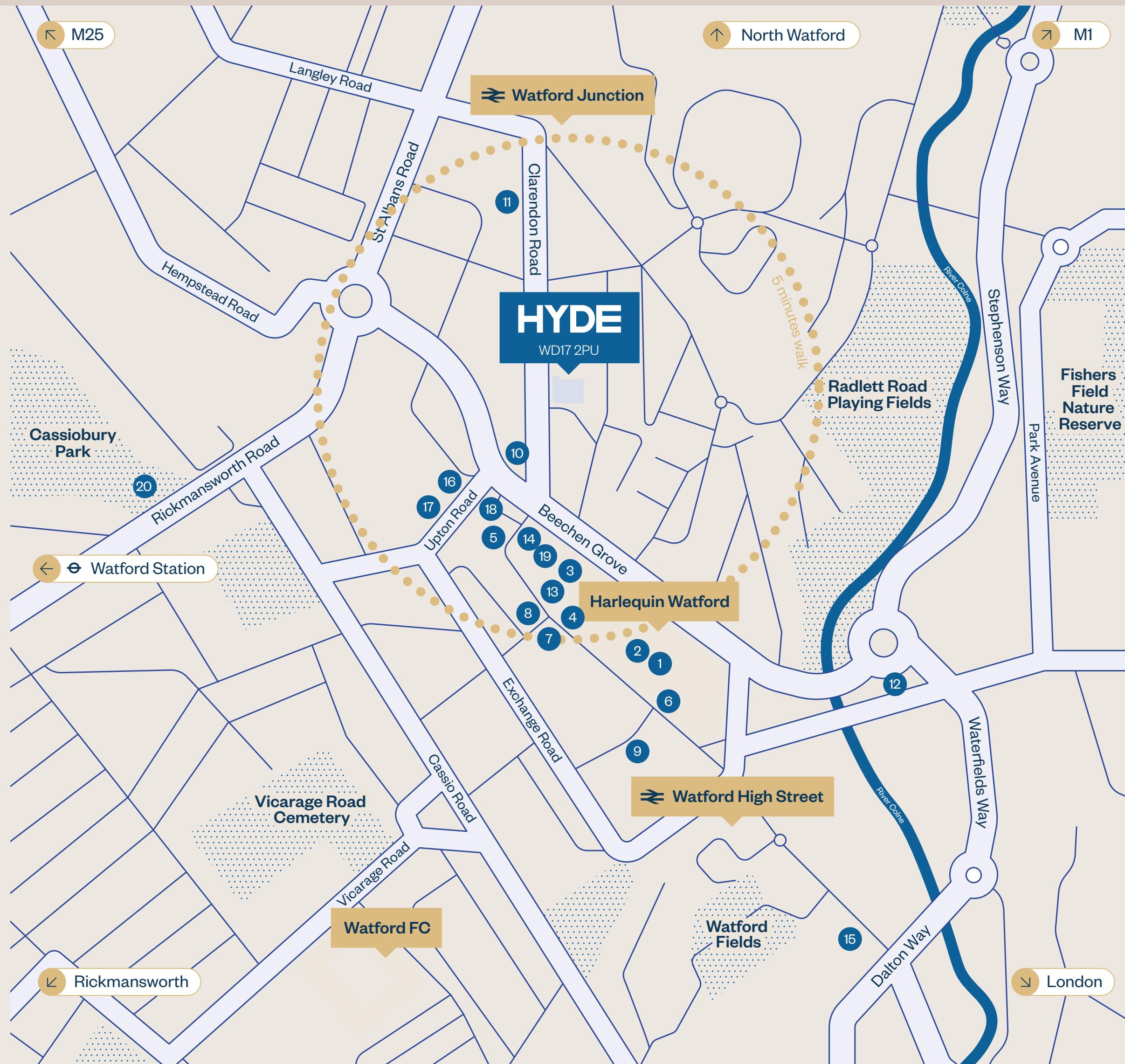
Entertainment

Cineworld Cinema	13
Watford Palace Theatre	14
Pump House Theatre and Arts Centre	15
Watford Colosseum	16

Wellness

Fitness4Less	17
NRG Gym	18
YMCA Gym	19
Cassiobury Park	20

HYDE
WD17 2PU



Feel Connected & In Control.



M25 J20

12 minutes



Harlequin Watford Shopping Centre

3 minutes walking



Euston

15 minutes



Watford Junction

6 minutes walking



Milton Keynes

18 minutes



Cassiobury Park

15 minutes walking



Luton Airport

22 minutes



Watford Station

25 minutes walking




Heathrow Airport

28 minutes

Energy. Flow.
Welcome to a
workplace that
works for you.

Schedule of Areas

Floor		Sq Ft	Sq M
Roof Terrace		n/a	n/a
Fourth	Virtual Tour	14,071	1,307.15
Second	Virtual Tour	9,138	904.69
Ground	Virtual Tour	3,184	295.8
Total (IPMS₃ Approx.)		26,393	2,507.64
Fourth Terrace		2,411	224.00
Total (IPMS₃ Approx.)		2,411	224.00

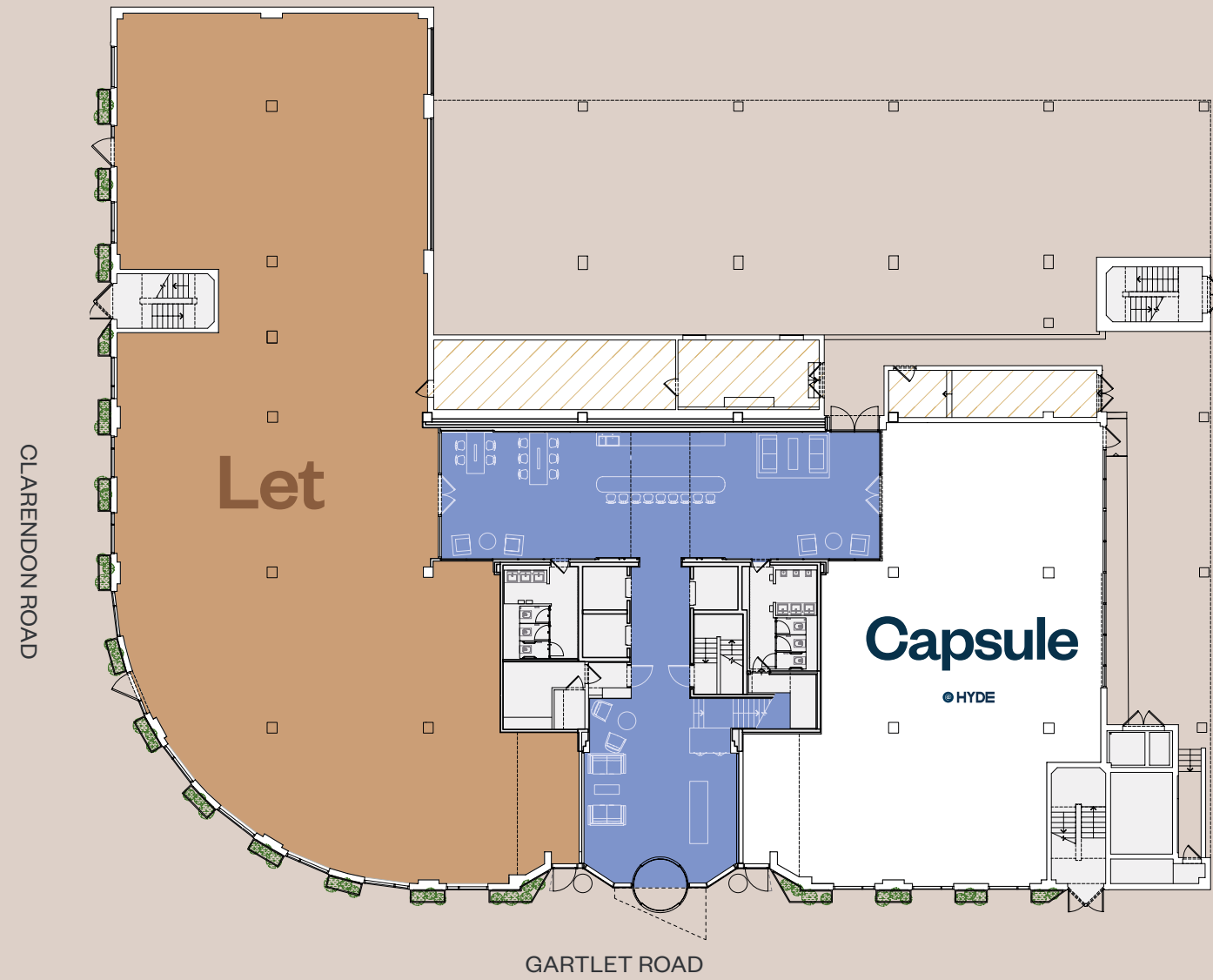


G

295.8 sq m
3,184 sq ft

Fitted Space

[Virtual Tour](#)



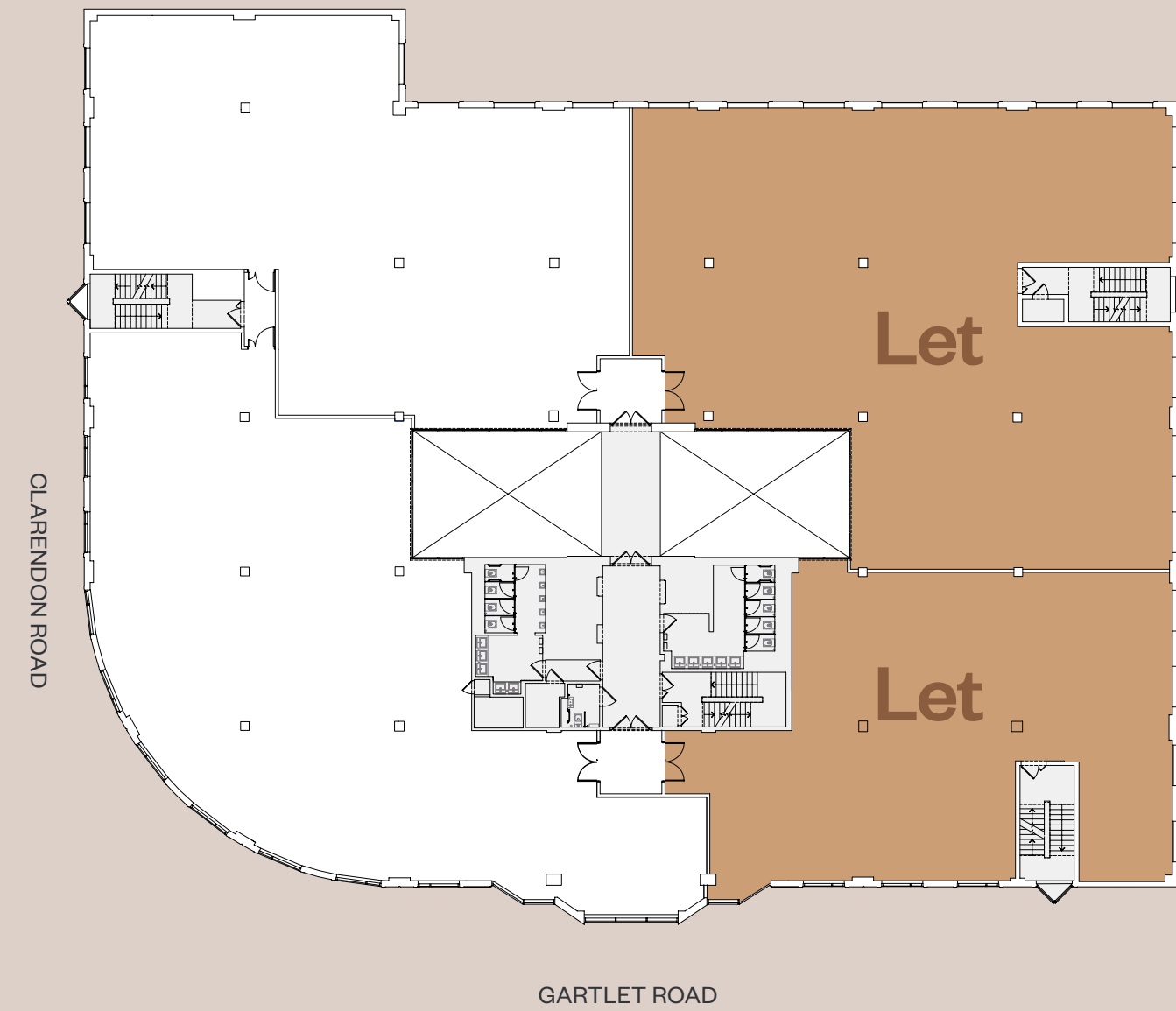
2nd

Option 1

Tenancy 1
391 sq m
4,209 sq ft

Tenancy 3
905 sq m
4,929 sq ft

[Virtual Tour](#)



4th

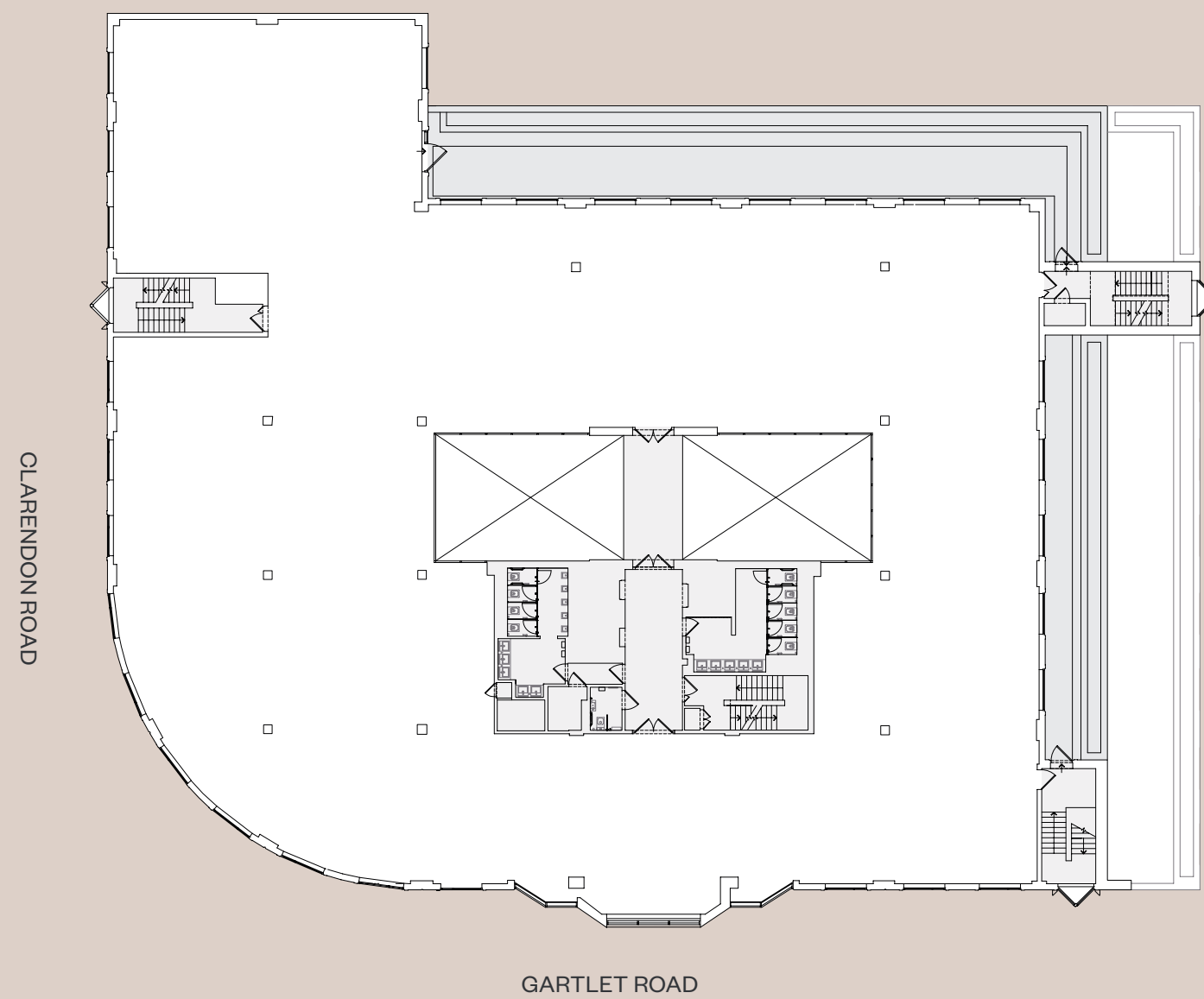
1,307.15 sq m
14,071 sq ft

[Virtual Tour](#)

Key

- Reception & break out
- Available Office
- Let Office
- Core
- Plant

HYDE

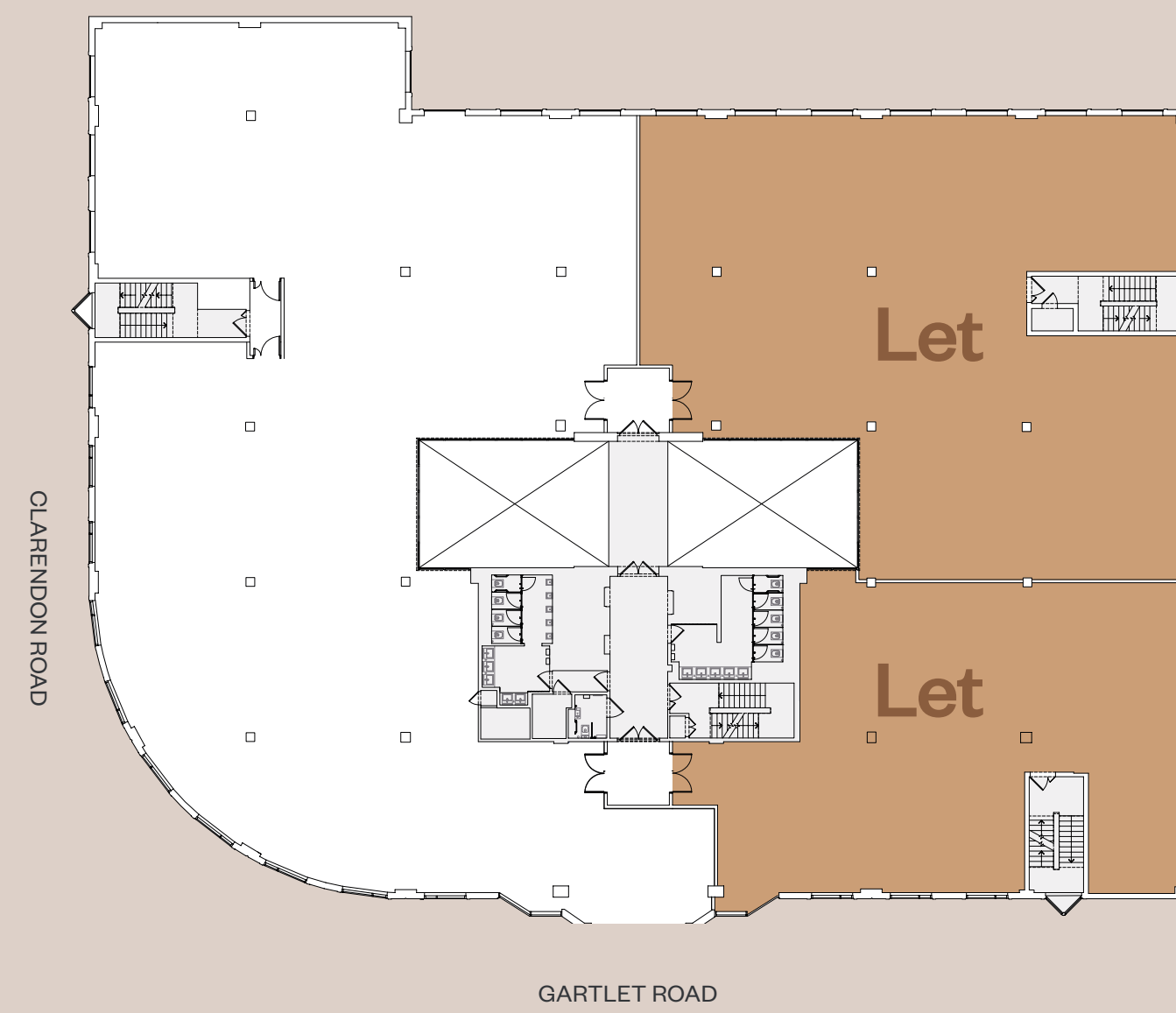


2nd

Option 2

849 sq m
9,138 sq ft

[Virtual Tour](#)



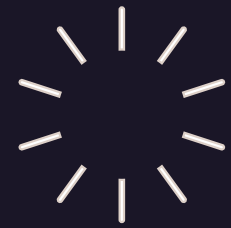
Not to scale.
Indicative only.

An environment designed to nurture your best work.



Reception

Newly refurbished featuring an extended waiting area.



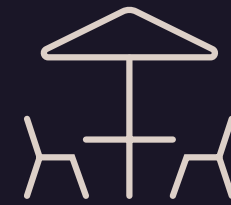
Atrium

New breakout space and coffee point.



Concierge

Reception service.



Terrace

Communal roof terrace with unrivalled views.



Car Parking

284 spaces at 1:274 sq ft



New cycle & changing facilities

Storage for 72 bikes, showers, changing room and WC's



2.275m

Floor to ceiling height



Exposed Services

Full Specification

1.0 Building Performance

Occupational density 1 person per 8 sqm	Air-Conditioning – Four pipe fan coil system
Floor to ceiling services 2.725 m	Fresh Air Cat A office 10L/S/Person (@1:8 sqm)
Raised floor depth 150 mm (Gross)	Office lighting levels 300-500 Lux
Planning Grid 750mm x 750mm	Office area small power 25w/m ²
Exposed services	Three x 10 person passenger lifts

2.0 Amenities

Central Atrium	284 car parking spaces (1:274 sq ft)
Male, Female and disabled WC's on each floor	6 electric car charging points
9 showers (4 male, 4 female, 1 disabled)	2 private terraces (3rd & 4th floors)
Changing facilities inc 72 lockers	Roof top communal terrace
72 secure cycle spaces	Concierge reception service

3.0 Sustainability

SKA Gold rated	Low flush WCs, water efficient taps and showers
EPC rating B	AirScore Platinum
Extensive cycle and shower facilities	WiredScore Gold
Greening of building façade and roof	Energy efficient lighting
Strong use of materials with environmental product declarations, EU Eco labels and recycled content	



HYDE, Watford – the workspace you've been waiting for.



HYDE

Contact



Will Foster
07789 878 007
Will.Foster@realestate.bnpparibas

James Little
07350 404 732
James.Little@realestate.bnpparibas



Tim Howlings
07702 884 402
Tim.Howlings@brasierfreeth.com

Elliot Fletcher
07523 801153
Elliot.Fletcher@brasierfreeth.com

Developer



Architect

suttonca

AirScore
Platinum



WiredScore
Gold



DISCLAIMER: All areas are approximate, measured in accordance with RICS Code of measuring practice 6th edition. The building may present anomalies in relation to survey/drawn plans. This information must not be relied upon to form the basis of any offer or contract. BNP Paribas and Brasier Freeth on their behalf and for the Vendors or Lessors of this property whose Agents they are, give notice that: 1. These particulars are set out as a general outline only for guidance to intending Purchasers or Lessees, and do not constitute any part of an offer or contract. 2. Details are given without any responsibility and any intending Purchasers, Lessees or Third Parties should not rely on them as statements or representations of fact, but must satisfy themselves by inspection or otherwise as to the correctness of each of them. 3. No person in the employment of BNP Paribas and Brasier Freeth has any authority to make any representation or warranty whatsoever in relation to this property. Subject to contract. October 2025. Designed by Studio185 studio185.london | 075