

self-contained ground and lower ground office space or any E use

## 18 alie street, aldgate, e1

for sale or rent

4,720 sq ft



a former gym space, 18 alie street is arranged over ground and lower ground with a private outdoor courtyard. the unit forms part of a residential complex which was completed in march 2013.

located in the heart of aldgate, the property is within the creative neighborhood of whitechapel which boasts history and culture with iconic landmarks nearby.

LONDON



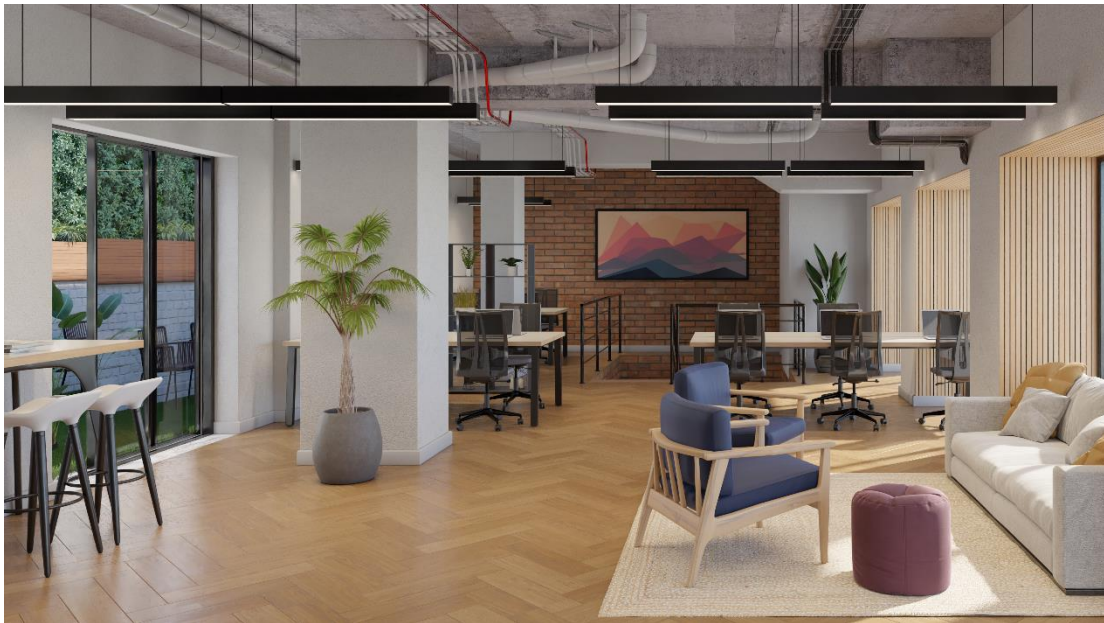
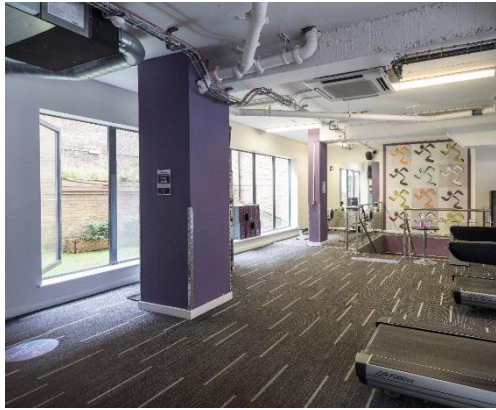
PILCHER

8600



27399

TELEPHONE

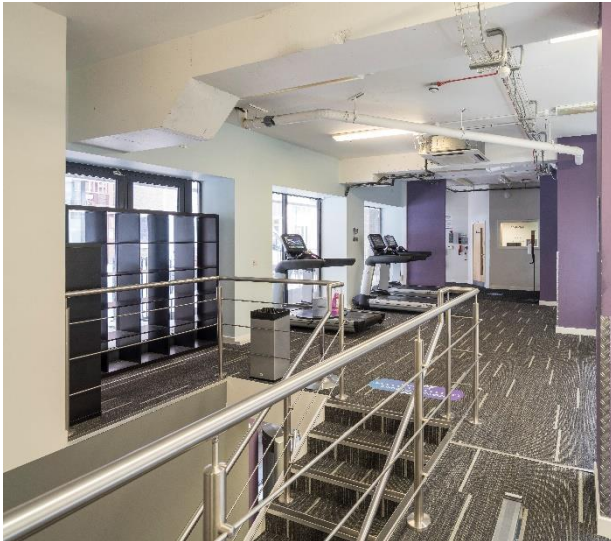


PILCHER LONDON

020 7399 8600  
TELEPHONE

17 SAVILE ROW LONDON W1S 3PN T 020 7399 8600 [www.pilcher.london](http://www.pilcher.london)

Misrepresentation Act. These descriptions and measurements do not form part of any contract and whilst every effort has been made to ensure accuracy this cannot be guaranteed.



**accommodation**

ground floor	1,770
lower ground	2,950
<hr/> total	<hr/> 4,720

**amenities**

- self-contained duplex
- private outdoor courtyard
- exposed concrete soffits
- bicycle storage
- shower facilities

**lease**

a new lease for a term by arrangement.

**price / rent**

upon application

**legal costs**

each party to bear their own legal costs incurred in this transaction.

**possession**

upon completion of legal formalities.

**viewing**

strictly upon appointment via joint agents

pilcher london  
020 7399 8600  
simon rinder / julian wogman

compton  
020 7101 2020  
elliott stern

burlington green partners  
020 7434 8780  
adam velleman / toby leaman

PILCHER LONDON

020 7399 8600

TELEPHONE