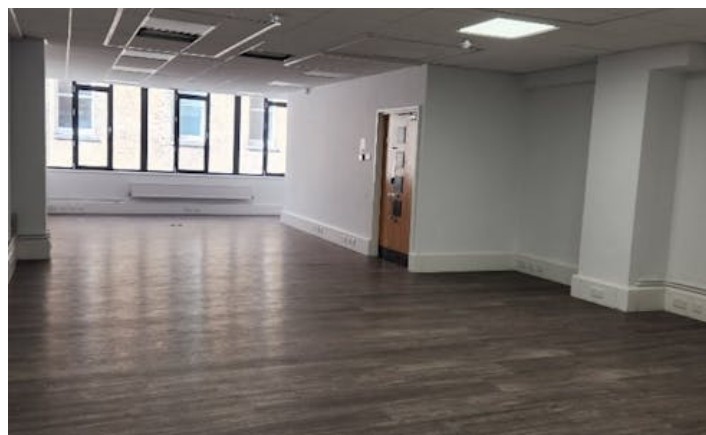


ELLIS BROWN

OFFICES TO LET

Short term office space available in the heart of Fitzrovia, just 150m from Tottenham Court Road Station's Elizabeth Line

84 Newman Street, W1T 3EU
1,475 - 2,958 sq ft



Ellis Brown
18-20 St. John Street
London, EC1M 4NX

T. 020 3745 0060
agency@ellisbrowncommercial.com

Property Misdescriptions act 1991/ Misdescriptions Act 1967. Ellis Brown for themselves and for the vendors of this property whose agents they are, give notice that These particulars do not form any part of any offer or contract: the statements contained therein are issued without responsibility on part of the firm or their clients and therefore are not to be relied upon as statements or representations of fact, any intending purchaser must satisfy himself as to the correctness of each statement made herein and the vendor does not make or give, and neither the firm nor any of their employees have the authority to make or give, any representation or warranty whatever in relation to this property. All prices exclude VAT. Generated on 26/09/2025

OFFICES TO LET

84 Newman Street, W1T 3EU
1,475 - 2,958 sq ft

Description

84 Newman Street offers refurbished office accommodation arranged from the Lower Ground to 2nd floor. The floors provide efficient open plan offices each benefitting from generous floor to ceiling heights and excellent natural light from dual aspect windows.

Lease terms of 18 months direct from the landlord available.

Location

Located in the heart of Fitzrovia just off Oxford Street, 84 Newman Street occupies a prominent position near the Eastcastle Street junction directly opposite the Rathbone Square development. The area is surrounded by an eclectic mix of cafes, restaurants and hotels as well as excellent retail opportunities. Transport links are exceptional with Tottenham Court Road station just a 2 minute walk and both Oxford Circus and Goodge Street stations an 8 minute walk away.

Accommodation

Name	sq ft	sq m	Rent (sq ft)	Rates Payable (sq ft)	Service Charge (sq ft)	Total month	Total year	Availability
1st	1,483	137.78	£35	£24	£10	£8,527.25	£102,327	Available
2nd	1,475	137.03	£35	£24	£10	£8,481.25	£101,775	Available
Total	2,958	274.81	£35	£24	£10	£17,008.50	£204,102	

Features

- Excellent natural light
- Efficient floor plates
- Generous floor to ceiling heights
- Passenger lift
- Cabled & redecorated
- Prominent location

EPC

B

Terms

On application

VAT

Applicable

Contact

Freddie Grant
07956 201 774
fgrant@ellisbrowncommercial.com

Sophia Planker
02037450060
splanker@ellisbrowncommercial.com

OFFICES TO LET

84 Newman Street, W1T 3EU
1,475 - 2,958 sq ft

