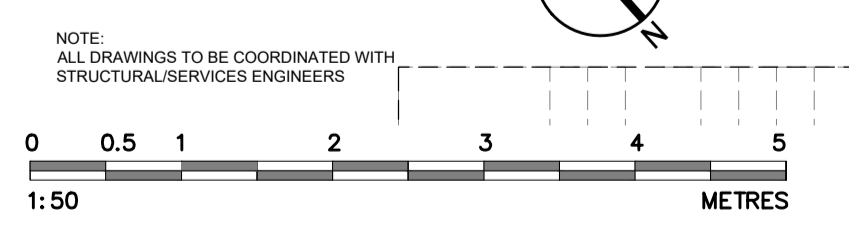


PROPOSED GROUND FLOOR PLAN
scale 1:50

DRAFT



NOTE: ALL DRAWINGS TO BE COORDINATED WITH STRUCTURAL SERVICES ENGINEERS

Status	Description	date	drawn by	checked by	Status	Description	date	drawn by	checked by
P1	FOR INFORMATION	19/06/2017	MS	MS					
P2	PLAN AMENDED	29/06/2017	ES	MS					
P3	SCALE CHANGED	17/07/2017	ES	MS					
P4	PLAN GENERALLY AMENDED	21/07/2017	ES	PM					
P5	DRAWING NO. AMENDED	14/08/2017	MS	MS					
P6	PLAN GENERALLY AMENDED/MECHANICAL NOTES ADDED	22/08/2017	ES	MS					
P7	BASEMENT STAIR CHANGED, CURTAIN WALL AMENDED, ALL NOTES AMENDED, GRID LINE UPDATED	24/08/2017	JB	MS					

"copyright and ownership of this drawing is vested in paul murphy architects whose prior written consent is required for its use, reproduction or for publication to any third party. all rights reserved by the law of copyright and by international copyright conventions are reserved to paul murphy architects and may be protected by court proceedings for damages and/or injunctions and costs."

do not scale this drawing all written dimensions are in millimetres any inconsistencies to be reported to the architect immediately

© paul murphy architects 2007

PaulMurphyArchitects

The Foundry
7 Glenthorne Mews
London W6 0LJ

T 020 8846 2520
F 020 8846 2521

info@paulmurphyarchitects.co.uk
www.paulmurphyarchitects.co.uk

client HAND & FLOWER PROPERTIES LTD
project HAND & FLOWER
drawing PROPOSED GROUND FLOOR PLAN
stage 4 scale 1:50 @A1
no 1702 SK 1002 rev P7