

**fisher
german**

23 Roscoe Street

Liverpool, L1 2SX

Leasehold
Class E (Offices)

338 - 811 Sq Ft (31.4 - 75.34 Sq M)



To Let | £8,500 - 18,000 per annum



Key information



Rent

£8,500 - £18,000
per annum



EPC rating

TBC



Rateable Value

1st Floor £5,200
2nd Floor £8,100



Service Charge

£ Inclusive

Description

23 Roscoe Street offers flexible, all-inclusive work space for creative businesses and professional services. Designed by architects Smith Young, the building has been comprehensively refurbished retaining features such as exposed brickwork and steel beams. The available space on the second floor includes its own kitchen and WC facilities. The available space on the first floor benefits from access to a shared kitchen and shared WC. Two car parking spaces available at an additional cost.

Amenities



Flexible
Lease Terms



Shared
Kitchen



Secured Site



Parking at
Additional
Cost



IT / Comms



City Centre
Location

Location

Well-designed offices located a stones' throw from Hardman Street, Hope Street and Bold Street. Ideal for small businesses looking for flexibility and well-served by a host of nearby popular cafés, bars and restaurants.

The offices are situated on Roscoe Street in Liverpool's Georgian Quarter, close to the universities, cathedrals and Philharmonic Hall. The city centre is within walking distance, making this location a sought-after spot for creative, professional, medical and general office users.

Address: 23 Roscoe Street, Liverpool

What3words: [///reform.offer.camps](#)

Locations

Liverpool One: 0.4 miles

Baltic Triangle: 0.7 miles

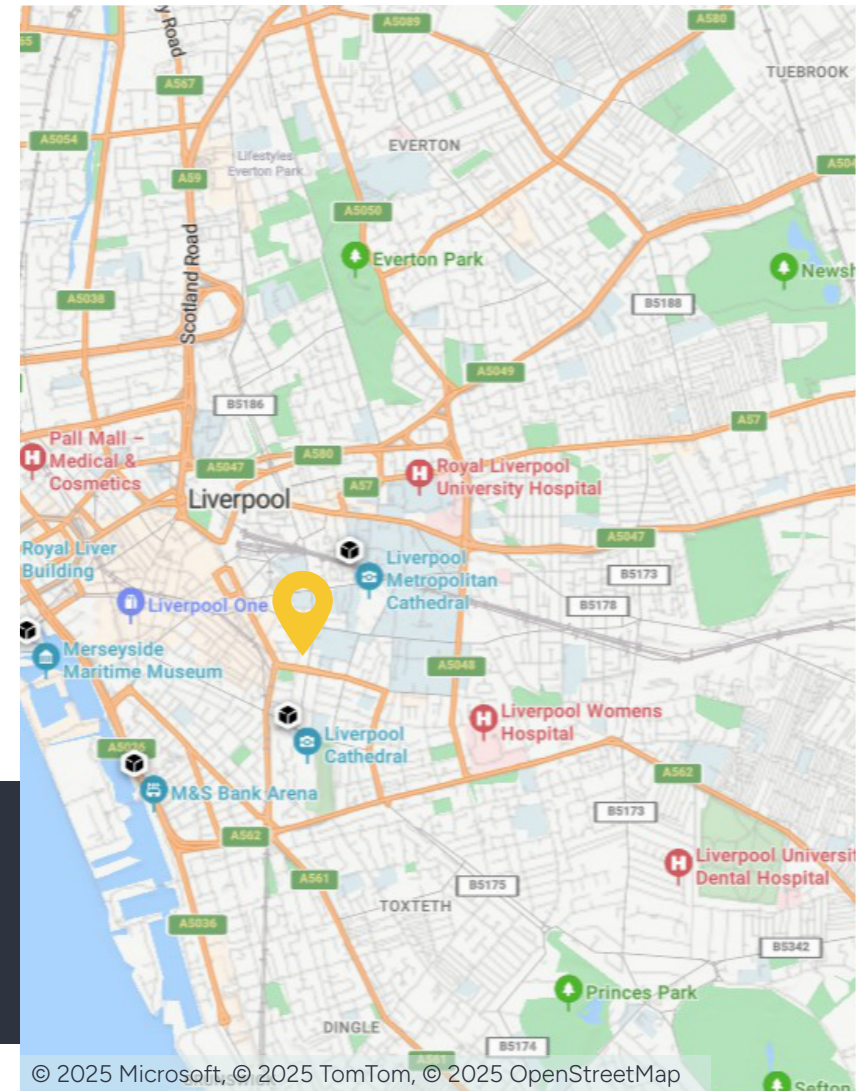
Royal Liverpool University Hospital: 0.9 miles

Nearest station

Liverpool Lime Street: 0.5 miles

Nearest airport

Liverpool John Lennon Airport: 7.6 miles



Further information

Rent

The quoted rent is £8,500 - £18,000 per annum. The rent includes heating, electricity, IT/Comms and service charge.

Tenure

Leasehold

Lease Terms

The accommodation is available to let on terms to be agreed.

Business Rates

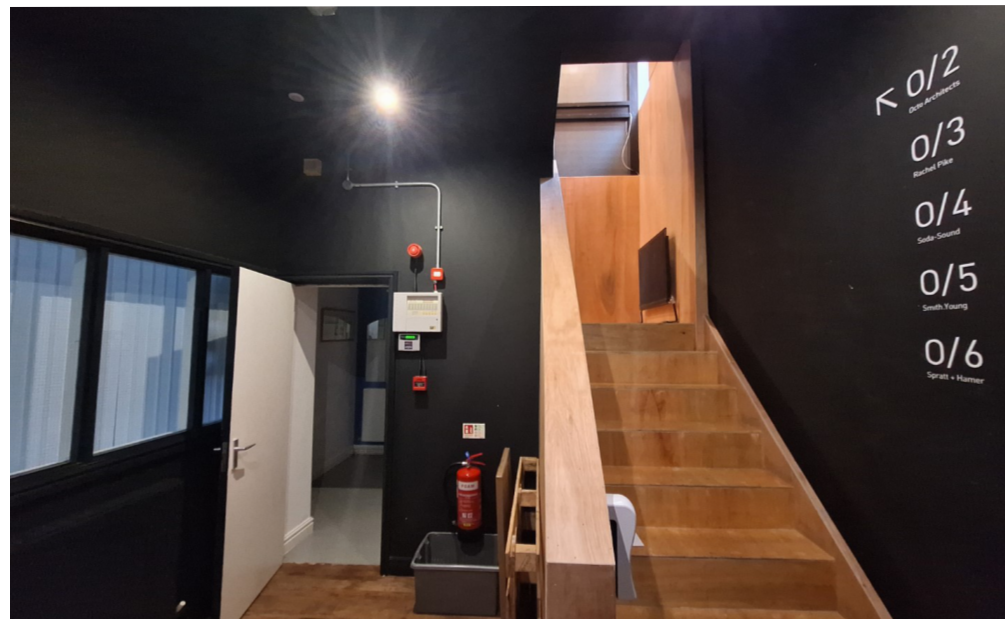
Occupiers will be responsible for paying business rates directly to the local authority.

Legal Costs

Each party to be responsible for their own legal costs incurred in this transaction.

Fixtures & Fittings

Any fixtures and fittings not expressly mentioned within these particulars are excluded from the letting.



The accommodation has been measured on a Net Internal Area basis, the approximate areas comprise:

Accommodation	Sq Ft	Sq M
First Floor Office (Suite 3)	338	31.4
Second Floor Office (Suite 5)	811	75.34

Further information

Services

We confirm we have not tested any of the service installations and any occupiers must satisfy themselves as to the state and condition of such items.

EPC

The EPC rating is to be confirmed.

Service Charge

A service charge is payable in respect of the upkeep of the common parts. This is included in the rent.

Anti Money Laundering

The successful tenant will be required to submit information to comply with Anti Money Laundering Regulations.

VAT

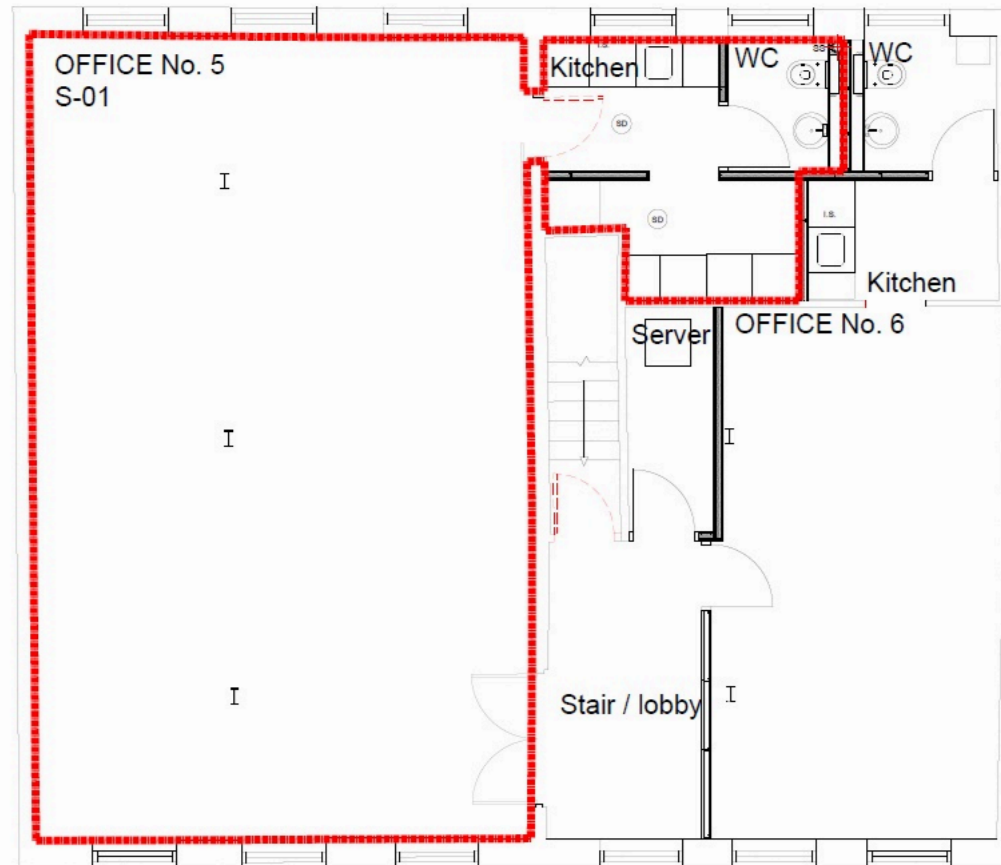
Unless otherwise stated, all prices and rents quoted are exclusive of Value Added Tax (VAT). Any intending tenant should satisfy themselves independently as to VAT in respect of this transaction.

Viewings

Strictly by prior arrangement with the sole agents.



Floor Plan



SECOND FLOOR PLAN

Contact us



Adam Fleming

0151 242 1095

adam.fleming@fishergerman.co.uk



Erica Saxon

0151 242 8960

erica.saxon@fishergerman.co.uk



Daniel Doherty

01565 757 984

daniel.doherty@fishergerman.co.uk

Please note: Fisher German LLP and its Joint Agents give notice that: 1. They have no authority to make or give any representation or warranty on any property whether on their own behalf or on behalf of their clients or otherwise. 2. They do not owe any duty of care to you and assume no responsibility for any statements, representations, warranties or otherwise made in the particulars and you should not rely on those in the particulars. 3. The particulars are produced in good faith are set out as a general guide only and do not constitute or form an offer or a contract or part thereof. 4. Any photographs, descriptions, plans, measurements, distances and any other details in the particulars are approximate estimates only taken as the property appeared at the time and should not be relied upon as factually accurate. 5. Fisher German assumes prospective purchasers/tenants have carried out inspections to satisfy themselves that the information in the particulars is correct.

Particulars dated January 2026. Photographs dated February 2025.



This brochure is fully recyclable