



Location

The property is prominently situated on Haslemere High Street, in the heart of this attractive and affluent Surrey market town. Haslemere benefits from a strong mix of independent boutiques, cafés, and national retailers, with Haslemere Station and public parking both within easy walking distance. The town enjoys excellent road links via the A3 to Guildford, London, and the south coast.

Description

A prominent kiosk-style retail unit located in the heart of Haslemere High Street, benefiting from excellent visibility and steady footfall. The property offers a compact open-plan layout with good natural light and strong High Street frontage. Ideally suited for independent retailers, this unit provides an excellent opportunity to secure a prime position in this popular Surrey market town.

Accommodation

Name	sq ft	sq m	Availability
Unit - Kiosk	295	27.41	Available
Total	295	27.41	

Terms

New Lease

Rent

£10,200 per annum +VAT

Rates & Charges

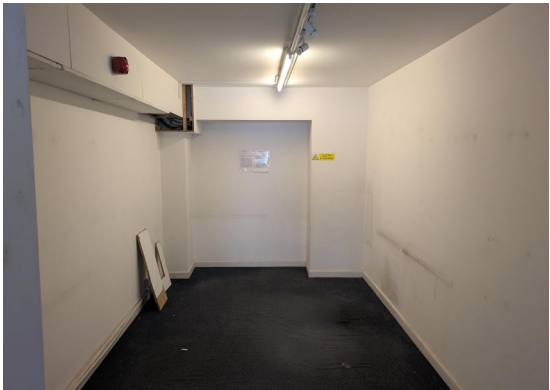
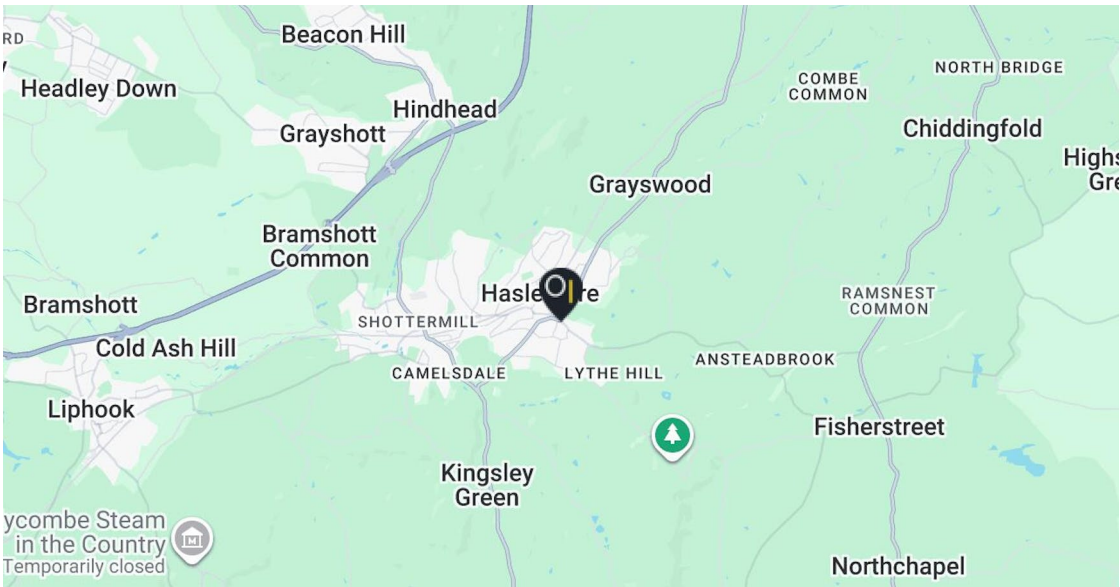
Rateable value: £6,100
Rates payable: £3,043.90 per annum

EPC

C (73)

Legal costs

Each party to bear their own legal costs incurred in the transaction.

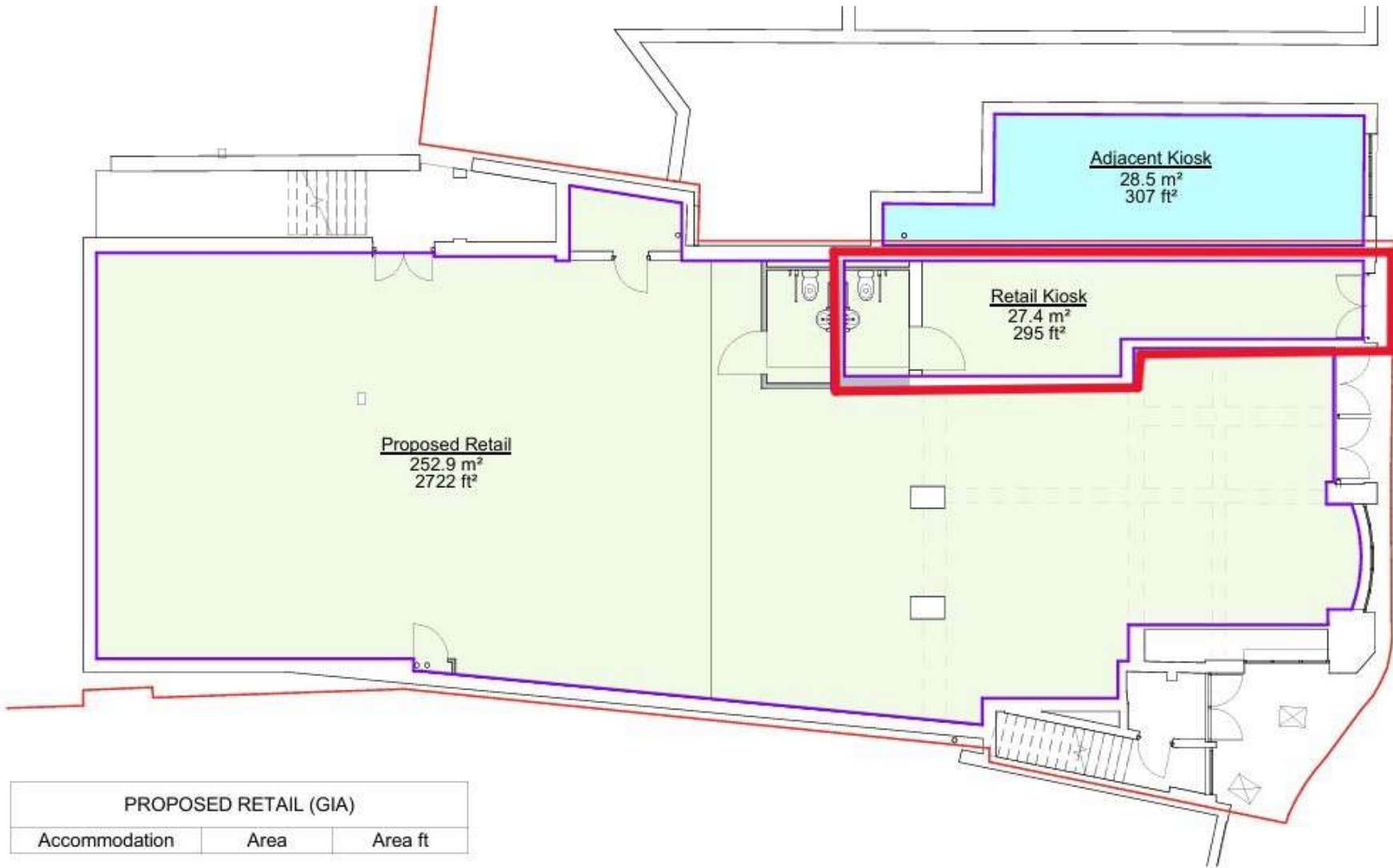


Contact

Alex Bellion
T: 01483 300176
M: 07971 756068
E: alex@owenisherwood.com

owenisherwood.com | 01483 300 176
1 Wey Court. Mary Road, Guildford, Surrey GU1 4QU

These particulars do not constitute, or form any part of, any offer or contract, and whilst all the information given is believed to be correct, all interested parties must satisfy themselves of its accuracy. All prices and rents are quoted exclusive of VAT, unless otherwise stated



PROPOSED RETAIL (GIA)		
Accommodation	Area	Area ft
Proposed Retail	253 m ²	2722 ft ²
Retail Kiosk	27 m ²	295 ft ²
	280 m ²	3018 ft ²



PROPOSED GROUND FLOOR AREAS



Form Design Group
Walton on Thames, Surrey, KT12 4RZ
Tel 01932 213248

Architecture
Planning
Structures
Interiors
Landscape