



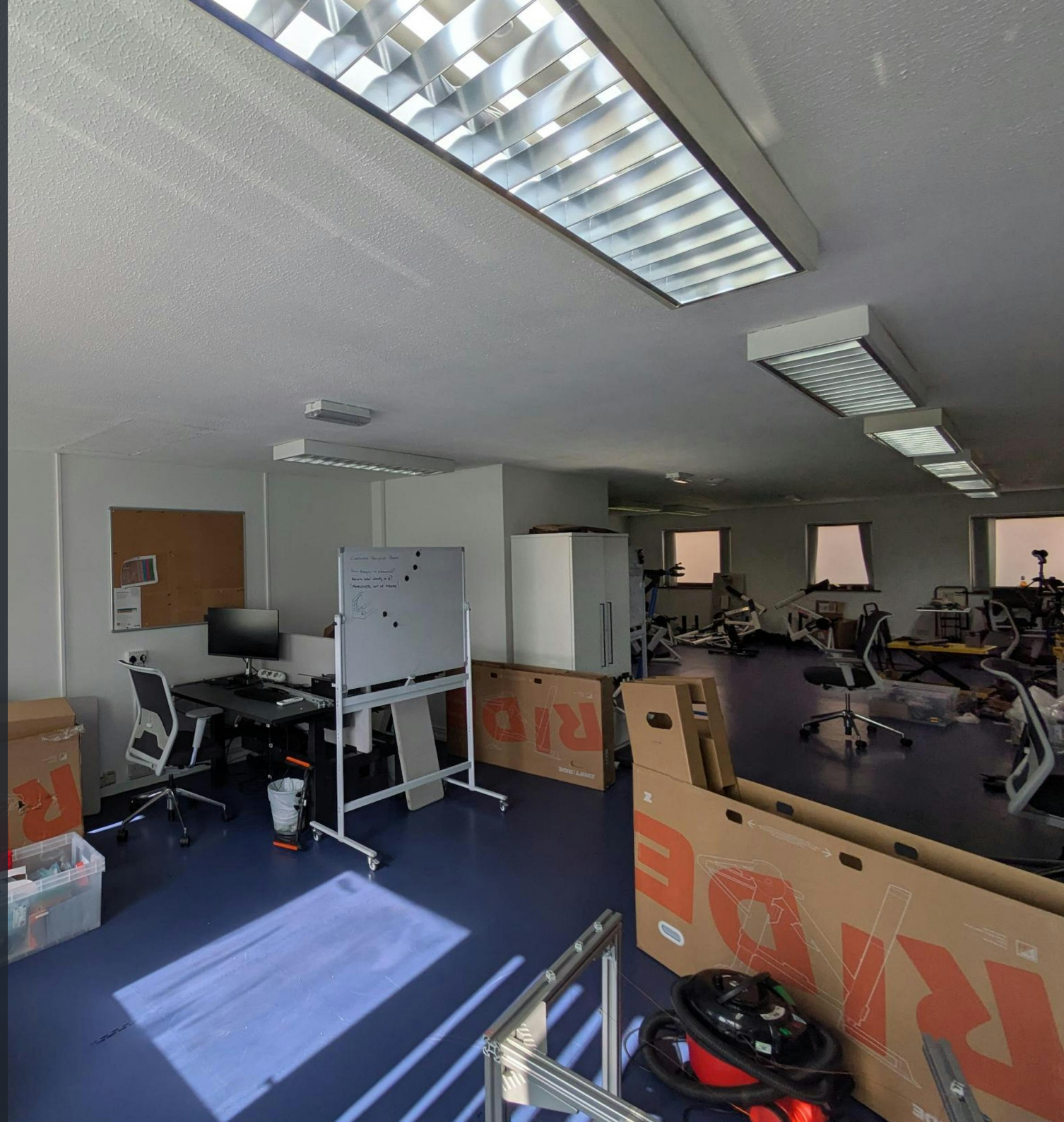
Owen  
Isherwood  
CHARTERED SURVEYORS

1H Merrow Business Park, Guildford, GU4 7WA

**FOR SALE | 2,067 SQ FT (192.03 SQ M)**

## Freehold commercial investment within a busy edge of town business park.

- Tenant in situ.
- Light industrial, storage and office use potential.
- Ample parking included close to the premises.
- Desirable location for commercial tenants.
- Bus links to the centre of town nearby.



## Location

Marrow business park is situated on the outskirts of Guildford along Marrow Lane, which connects northwards towards the A3 motorway between London and Portsmouth. The premises also benefit from being close by to two large supermarkets within Burpham which are within walking distance.

## Description

Freehold commercial premises of brick and slate built in the centre of an active and in-demand business park.

Internally, the premises offer WC units over both the first and second floors, open commercial space over both floors and windows facing out on to the courtyard at the front on the ground floor, and the front and rear on the first floor.

The tenant has fitted a number of partition walls which are removable and can be cleared to suit a new tenants needs. Currently let at £31,500 per annum.

## Accommodation

Name	sq ft	sq m	Rent	Availability
Unit - 1H	2,067	192.03	£31,500 /annum	Available
<b>Total</b>	<b>2,067</b>	<b>192.03</b>		

## Price

Offers in the region of £500,000 +VAT

## Rates & Charges

Rateable value: £39,250

Rates payable: £19,603 per annum (based on April 2023 listings - to be reassessed)

## EPC

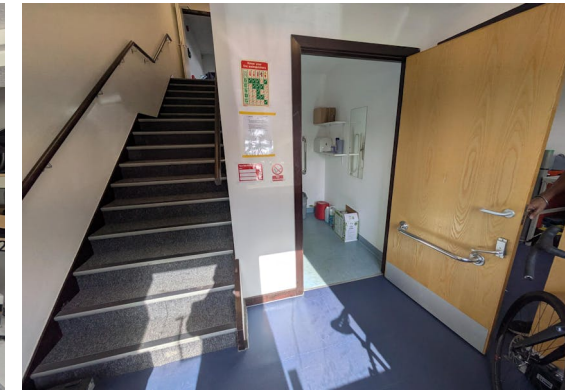
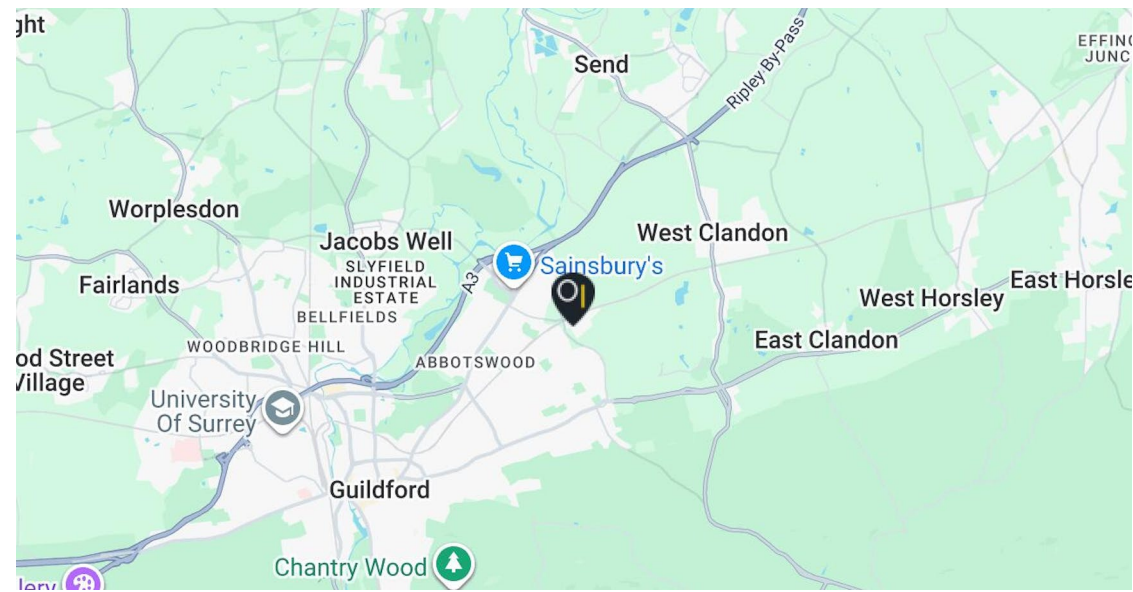
C (72)

## Tenure

Let on a three year lease from 01 January 2024 till 31 December 2027.

## Legal costs

Each party to bear their own legal costs incurred in the transaction.



## Contact

### Kieran Morgan

T: 01483 300176

M: 07904377405

E: Kieran@owenisherwood.com

### Alex Bellion

T: 01483 300176

M: 07971 756068

E: alex@owenisherwood.com

**owenisherwood.com | 01483 300 176**

**1 Wey Court, Mary Road, Guildford, Surrey GU1 4QU**

These particulars do not constitute, or form any part of, any offer or contract, and whilst all the information given is believed to be correct, all interested parties must satisfy themselves of its accuracy. All prices and rents are quoted exclusive of VAT, unless otherwise stated