



FLOOR PLANS

# THE ROWE

LONDON E1 7PE









# SCHEDULE OF AREAS

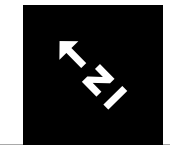
FLOOR	OFFICE (SQ FT)	OFFICE (SQ M)	TERRACE (SQ FT)
12 - Business Lounge	818	76	8,408
11	13,875	1,289	299
10	13,875	1,289	299
9	13,868	1,288	299
8	13,862	1,288	299
7	13,873	1,289	299
6	10,846	1,008	3,027
5	13,702	1,273	1,440
4	15,234	1,415	1,667
3	16,873	1,568	364
2	17,178	1,596	127
1	14,248	1,324	994
G - Reception & Café	5,253	488	-
G - Office	2,877	267	-
<b>TOTAL</b>	<b>166,382</b>	<b>15,458</b>	<b>17,522</b>

# GROUND FLOOR

-  Under offer
-  Cycle storage
-  Shared services & building management
-  Reception & café

OFFICE  
**2,877** SQFT | **267** SQM

RECEPTION & CAFÉ  
**5,253** SQFT | **488** SQM



# THIRD FLOOR

- New fitted office
- Under offer
- Shared services
- Terrace

## Space Breakdown

Reception	1
Tea Point	1
Comms	1
Print Area	1
Desks (1400)	64
Open Collab	4
2p Meeting	3
5p Meeting	2
16p Meeting	1
Lockers/Coats	16 units (@5H lockers = 80)

## OFFICE

**16,873** SQFT | **1,568** SQM

## TERRACE

**364** SQFT | **34** SQM



WHITECHAPEL HIGH STREET



COMMERCIAL ROAD

# FOURTH FLOOR

- New fitted office available
- Core services
- Terrace

## Space Breakdown

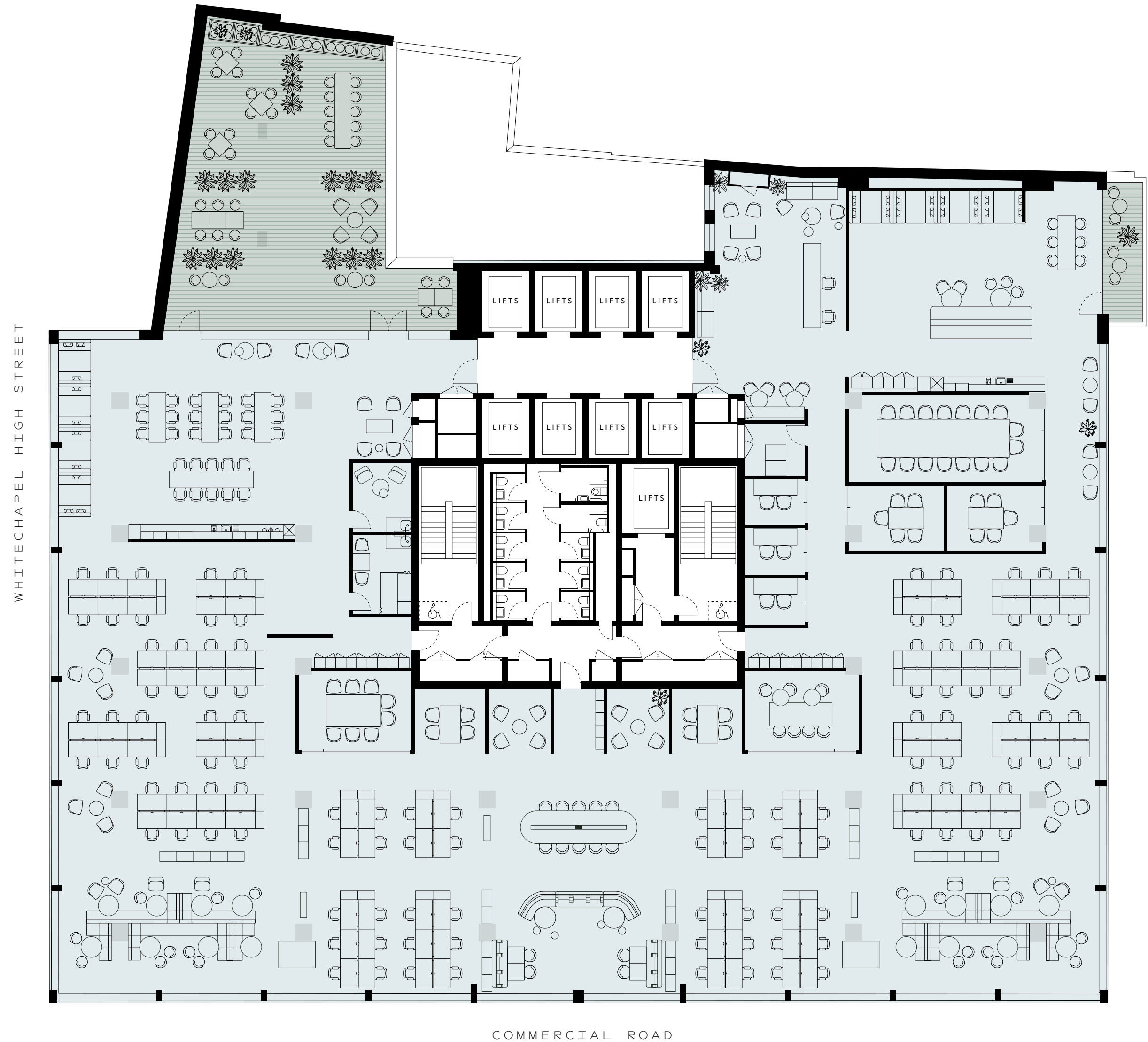
Reception	1
Tea Point	2
Comms	1
Print Area	1
Wellness	1
First Aid Room	1
Desks (1400)	112
Open Collab	3
2p Meeting	3
5p Meeting	2
8p Meeting	1
16p Meeting	1
AV Room	1
Lockers/Coats	24 units (@5H lockers = 120)

### OFFICE

**15,234** SQ FT | **1,415** SQ M

### TERRACE

**1,667** SQ FT | **155** SQ M

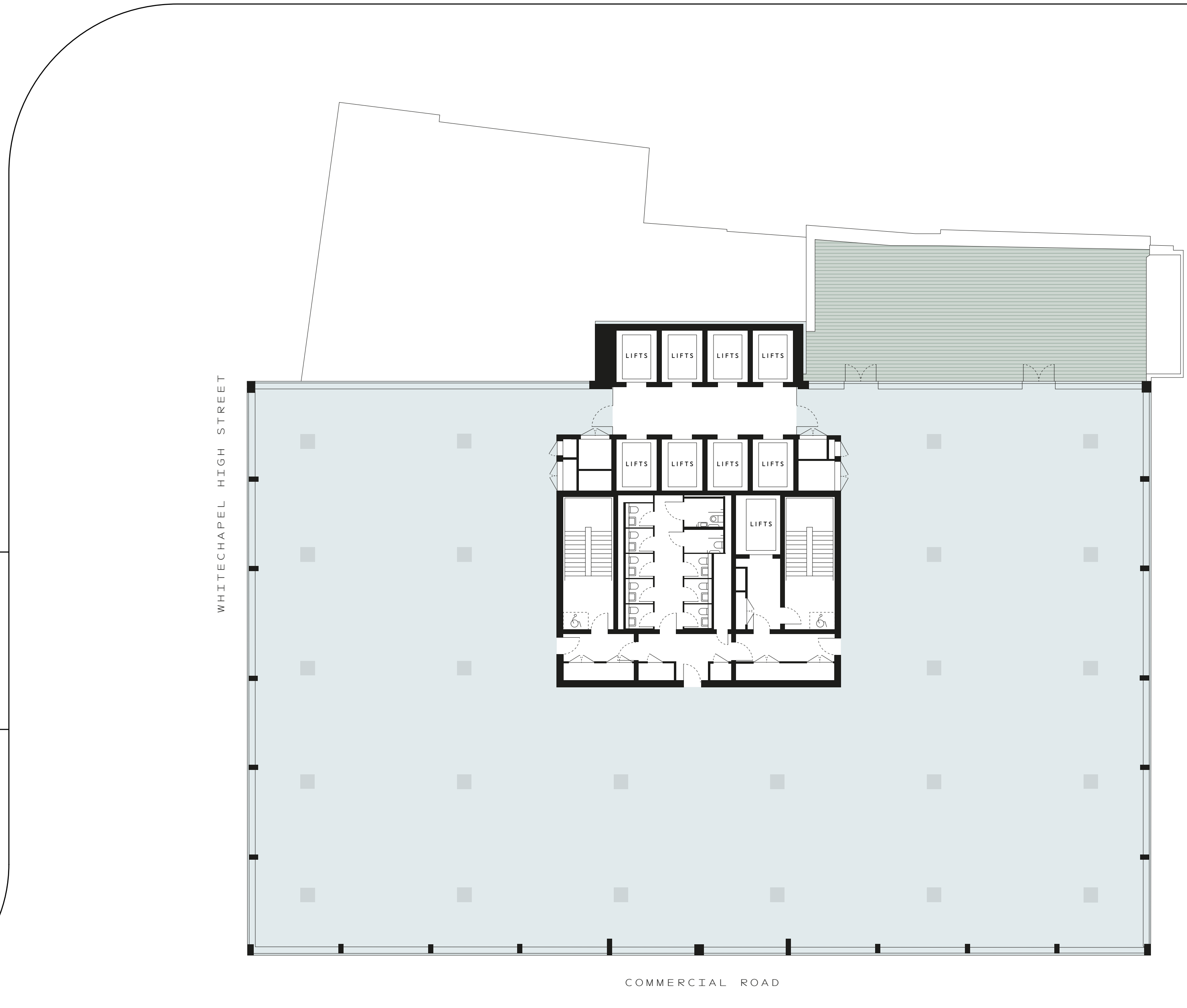
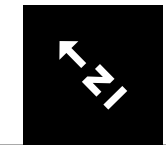


# FIFTH FLOOR

- Office
- Shared services
- Terrace

OFFICE  
**13,702** SQFT | **1,273** SQM

TERRACE  
**1,440** SQFT | **134** SQM

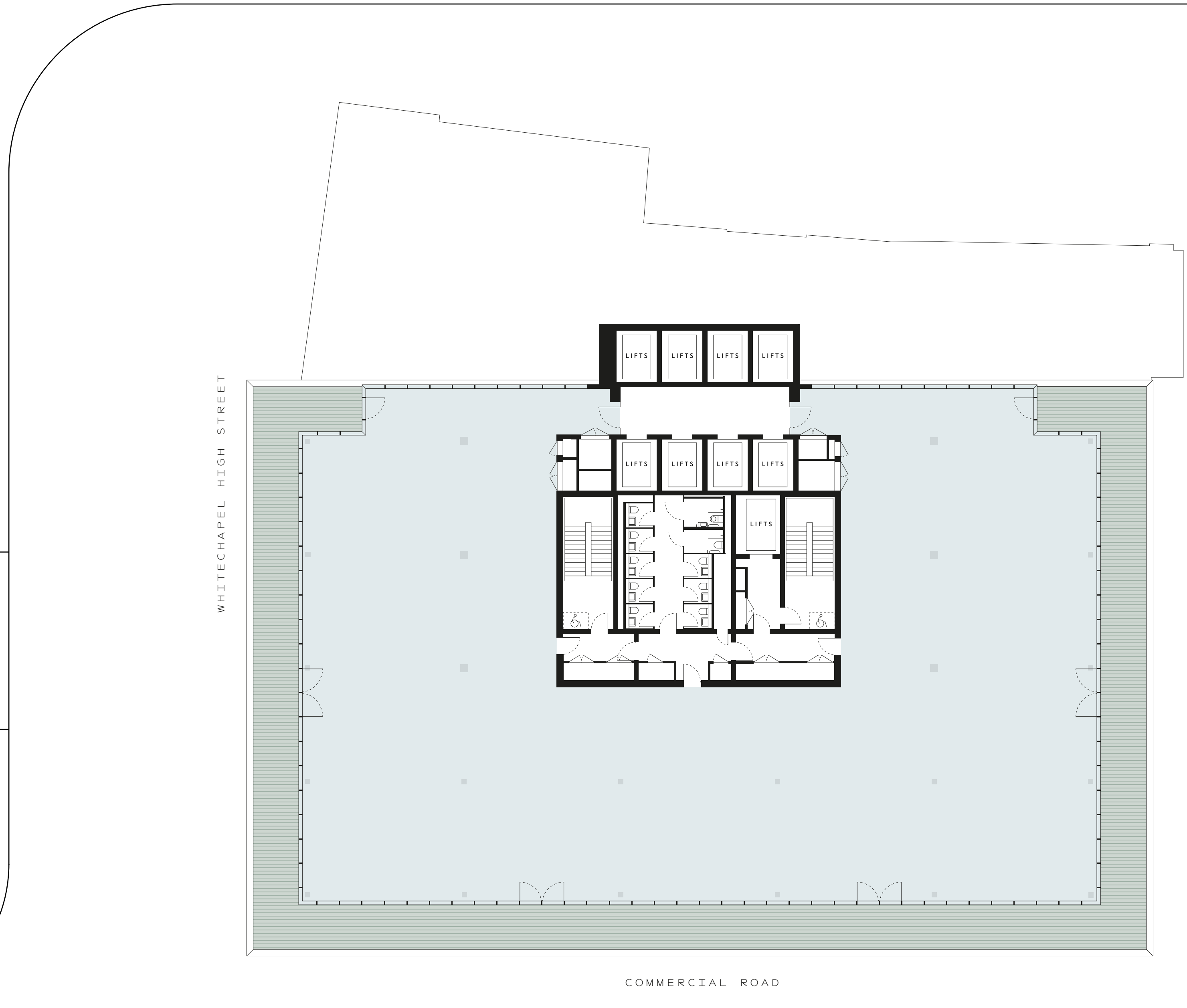
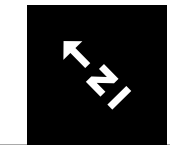


# SIXTH FLOOR

- Office
- Shared services
- Terrace

OFFICE  
**10,846** SQ FT | **1,008** SQ M

TERRACE  
**3,027** SQ FT | **281** SQ M

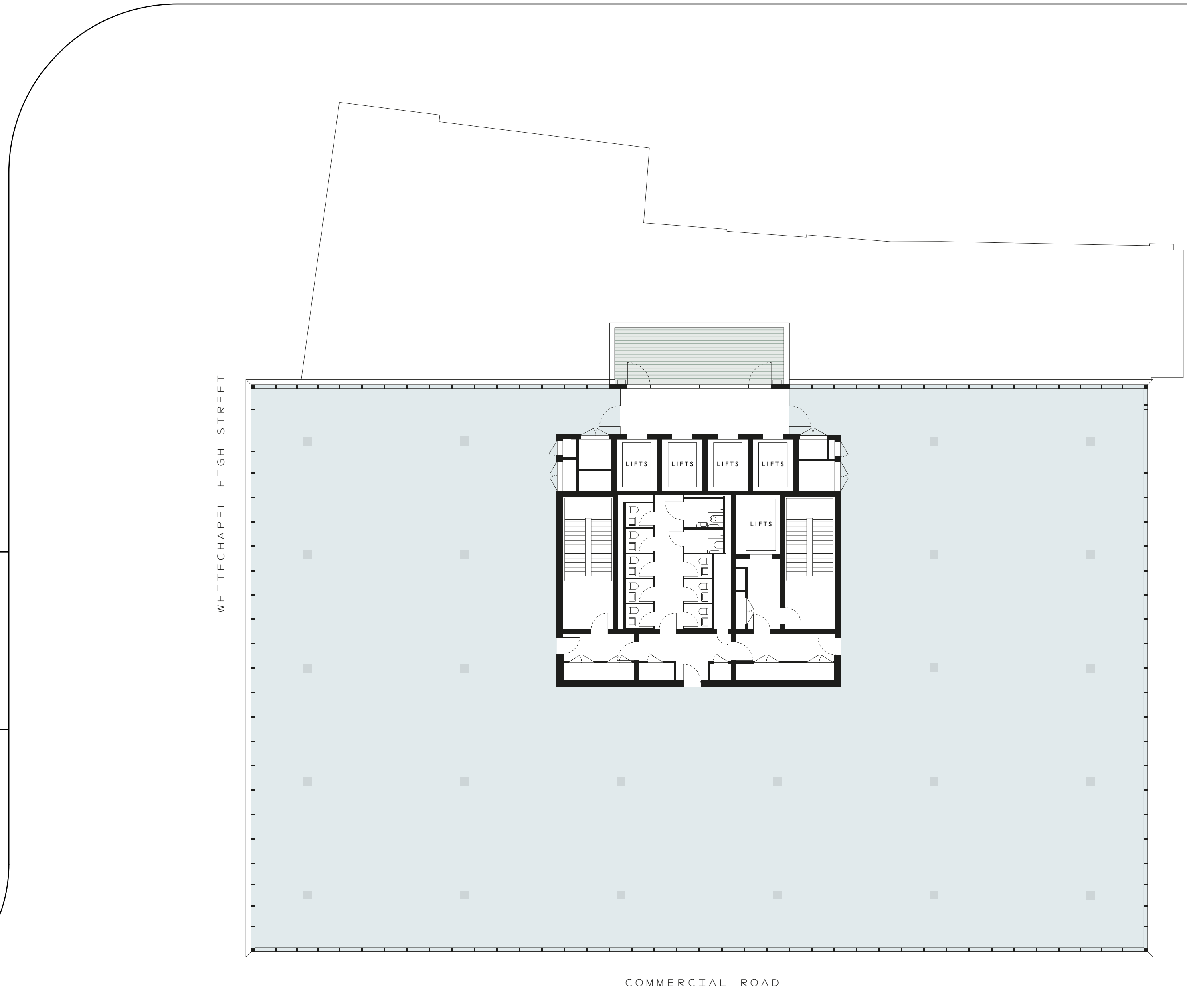


# SEVENTH - ELEVENTH TYPICAL FLOOR




- Office
- Shared services
- Terrace

OFFICE  
**13,862** SQFT | **1,288** SQM

TERRACE  
**299** SQFT | **28** SQM



# BUSINESS LOUNGE & COMMUNAL TERRACE

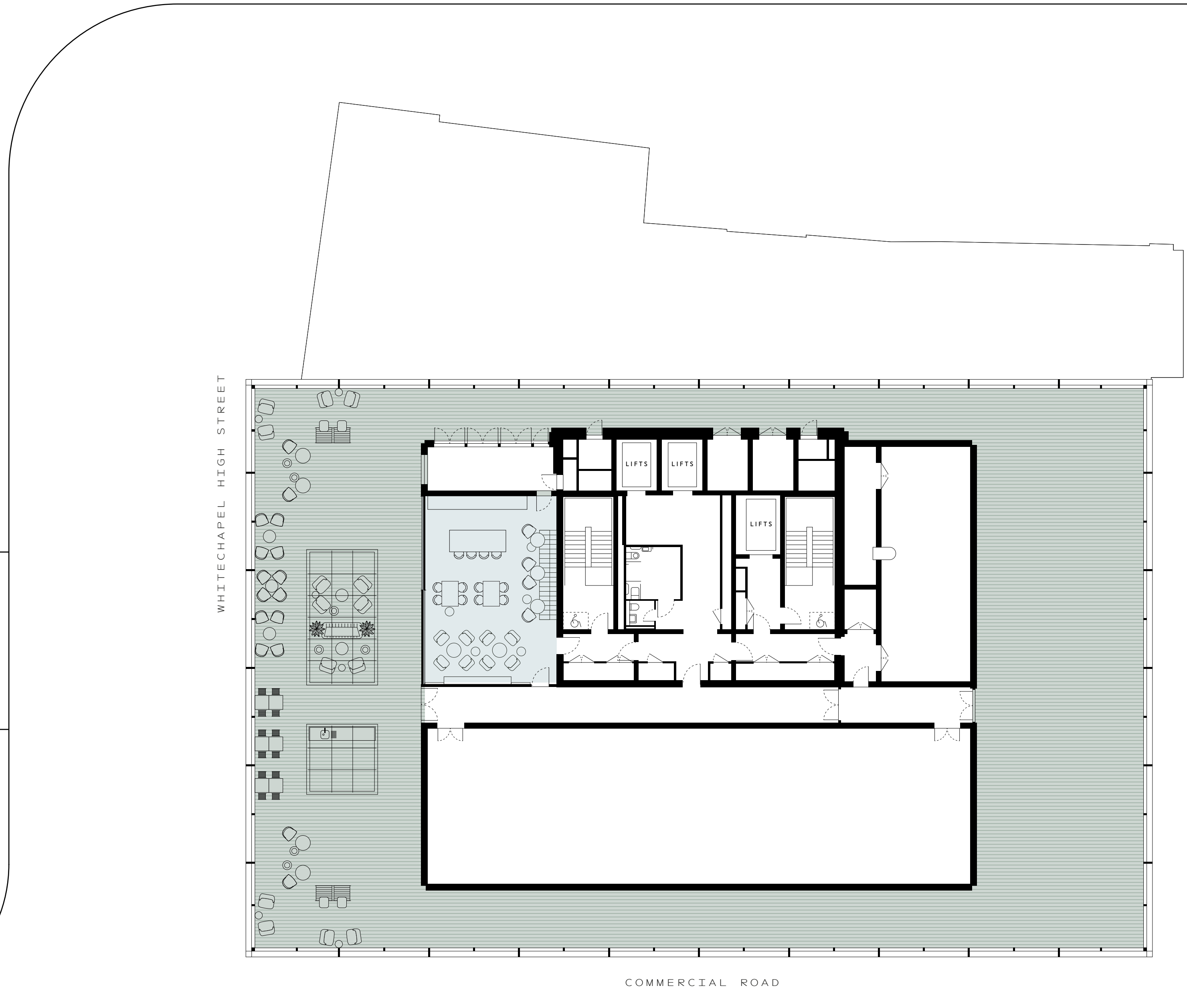
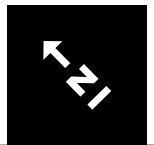
-  Business Lounge
-  Shared services
-  Terrace

BUSINESS LOUNGE

**818** SQFT | **76** SQM

COMMUNAL TERRACE

**8,408** SQFT | **781** SQM



# T H E R O W E

**THEROWE.LONDON**



The Joint Agents for themselves and for the vendors or lessors of this property whose agents they are, give notice that: (1) The particulars are produced in good faith, are set out as a general guide only and do not constitute part of a contract, (2) No person in the employment of the Joint Agents has any authority to make or give any representation or warranty whatsoever in relation to this property, (3) Unless otherwise stated all prices and rents are quoted exclusive of VAT, (4) CGIs for indicative purposes only. January 2025.