



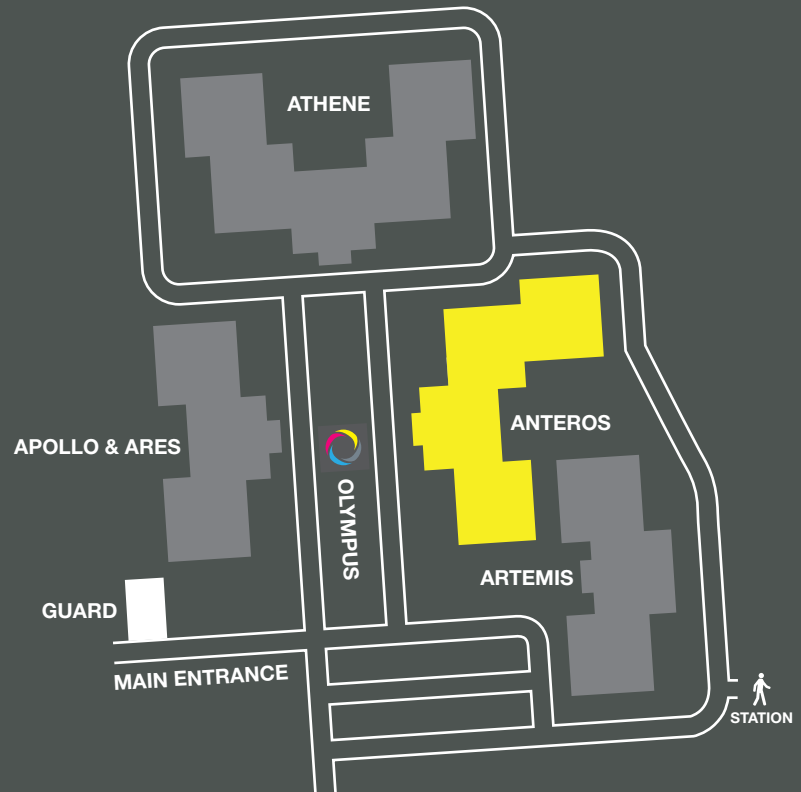
**ANTEROS**

 **DYSSEY**  
BUSINESS PARK

**6,000 TO 13,831 SQ FT**  
**NEWLY REFURBISHED**



# **DYSSEY** BUSINESS PARK



## THE PARK

The Park is extensively landscaped, has undergone a comprehensive external and internal refurbishment and has the on-site amenity of the Olympus Community hub / café for the sole use of tenants within the Park.

### GRADE A OFFICES

- Newly refurbished
- Central line 90 seconds walk
- Excellent parking provision (ratio 1:240 sq ft)
- Exceptional commercial terms





Olympus is the centre of community life at Odyssey Business Park. This centrally located hub offers a cafe, and brings together all our occupiers for events, wellbeing classes and much more.



The park is home to a wide range of national and international occupiers.



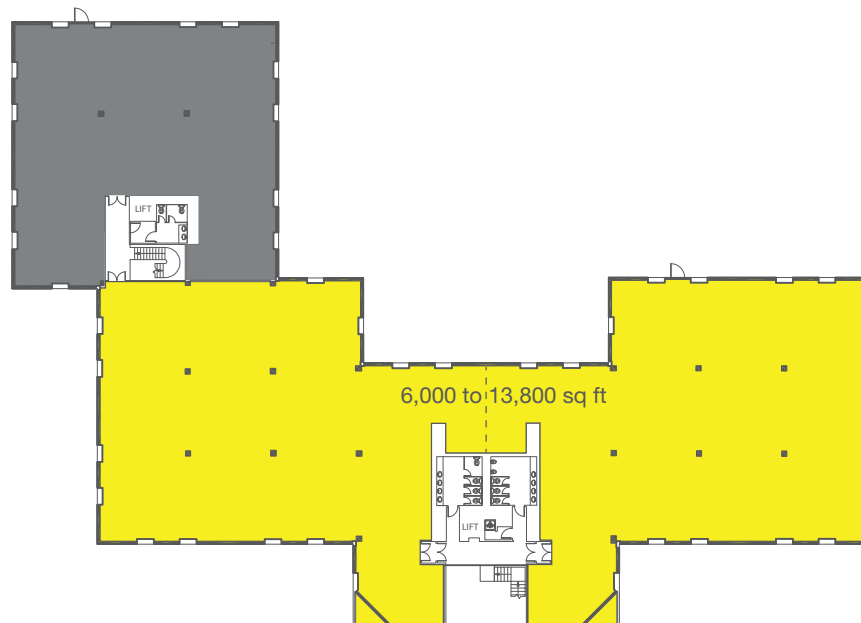
# SPECIFICATION

- Comprehensive refurbishment
- 115mm raised access floor
- VRV air conditioning with heat recovery
- Spacious reception, wc's and shower
- LED lighting with PIR movement sensors
- Metal tile ceiling and ceiling grid
- Energy efficient boilers
- EPC rating – b41
- Photo voltaic solar panels to roof
- Two passenger lifts



# ACCOMMODATION

**13,831 sq ft NIA**  
Available from 6,000 sq ft





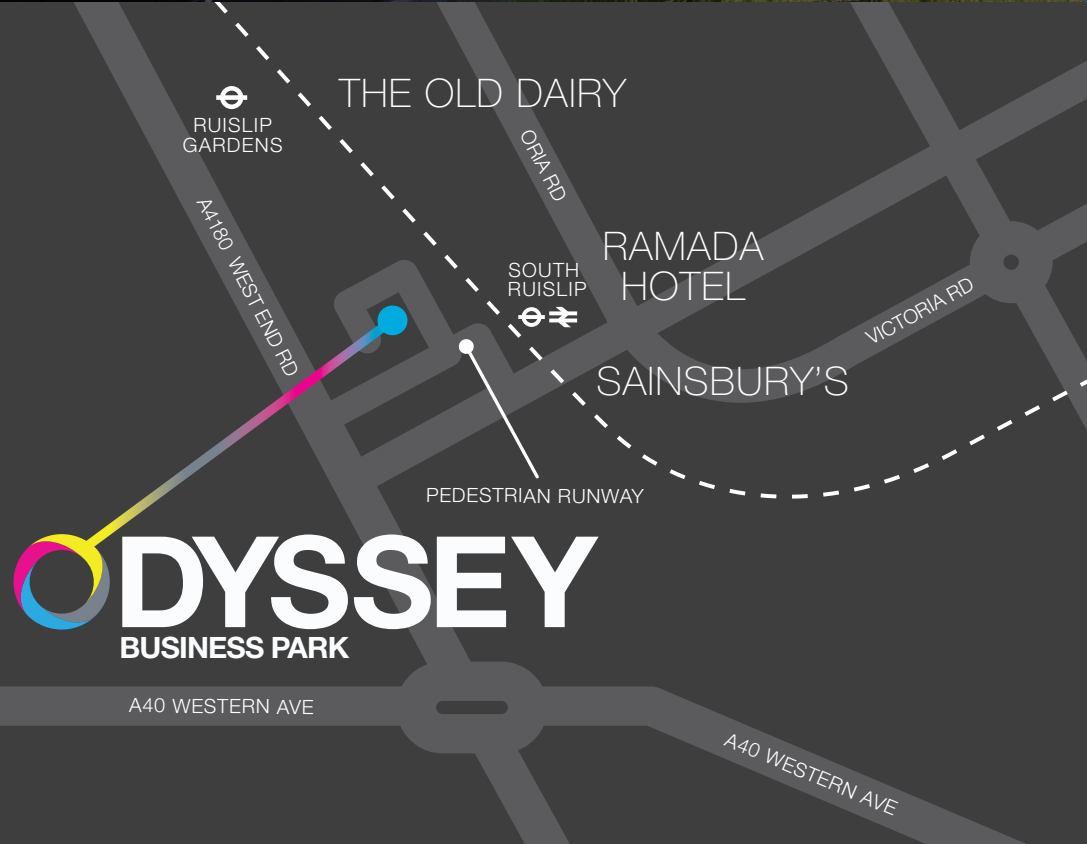






# SOUTH RUISLIP

Odyssey has superb local amenities. Five minutes from the Old Dairy, a new retail and leisure scheme, has recently opened.

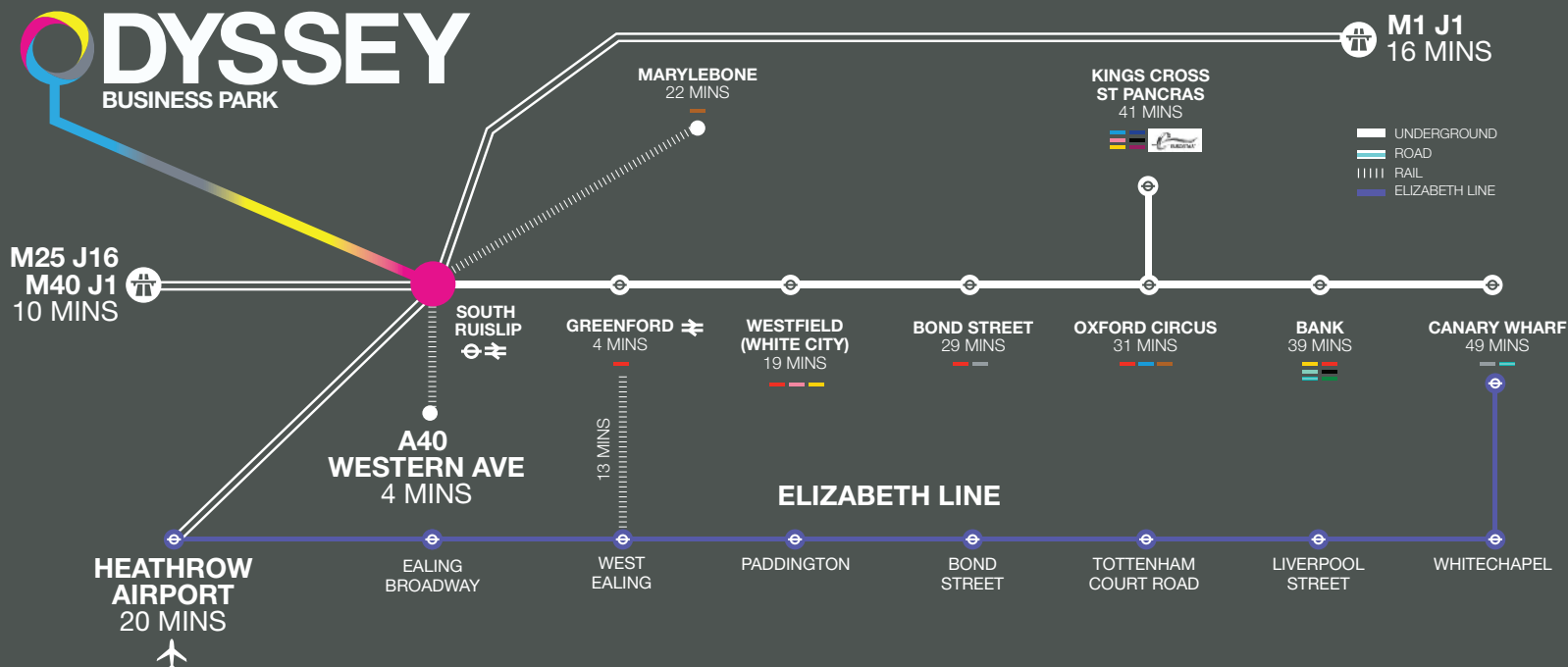


## WALKING DISTANCE

- 2 MINUTE WALK FROM SOUTH RUISLIP TUBE STATION (CENTRAL LINE)
- 2 MINUTES FROM SOUTH RUISLIP MAINLINE STATION
- 5 MINUTES TO THE OLD DAIRY, A NEW RETAIL AND LEISURE SCHEME

## TRAVEL TIMES

- 19 MINS TO WESTFIELD
- 29 MINS TO BOND ST
- 39 MINS TO BANK
- 49 MINS TO CANARY WHARF







**NATASHA RYAN**  
E: natasha.ryan@altusgroup.com  
T: 01753 561 808  
M: 07818 514 379



**RICHARD ZOERS**  
E: rzoers@hanovergreen.co.uk  
T: 020 3130 6414  
M: 07730 567 607



**WWW.ODYSSEY-BUSINESS-PARK.CO.UK**

Misrepresentations Act 1967 - Whilst all the information in these particulars is believed to be correct, neither the agents nor their client guarantee its accuracy nor is it intended to form any part of any contract. All areas quoted are approximate. November 2018