



34 LIME ST

— L O N D O N E C 3 —

6,813 sq ft of fitted and furnished office space in the City

BUSINESS READY

The 4th floor, comprising 6,813 sq ft of newly fitted and furnished office space in the City of London, features a reception area, multiple meeting rooms, open plan desking and a large kitchen/breakout area. The building offers a stylish main reception and end-of-trip facilities, including showers and bike storage, providing a high-quality, ready-to-occupy workspace in a prime City location.



EXTERIOR



BUILDING ENTRANCE



BUILDING RECEPTION



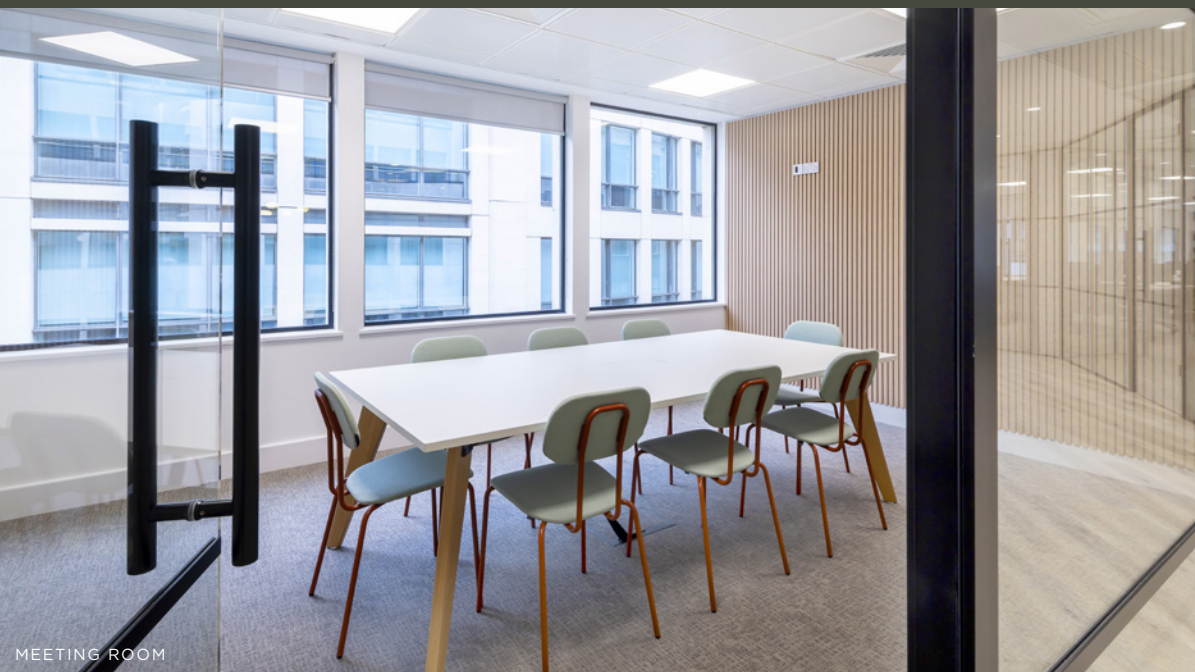
OPEN PLAN WORKSPACE



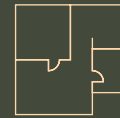
BREAKOUT SPACE



BREAKOUT & PHONE BOOTHS



HIGHLIGHTS



Impressive welcome area
and breakout space



Manned reception



Showers



Plug & play space with 70 open
plan desks and 5 meeting rooms



Bike storage & facilities



Prominent location in the
London City cluster

4TH FLOOR

6,813 SQ FT / 633.0 SQ M

70 x Workstations

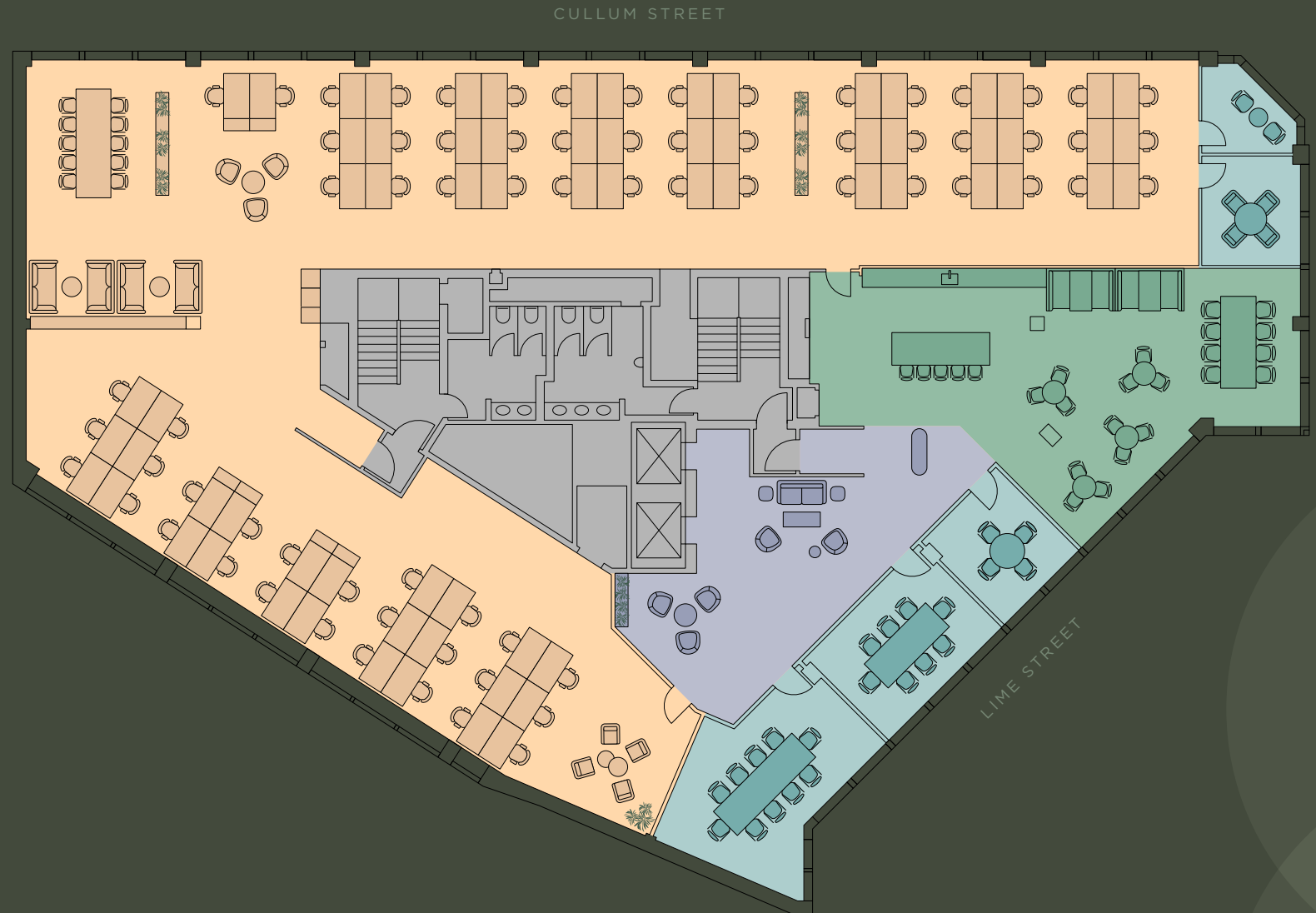
5 x Meeting Rooms

3 x Breakout Areas

1 x Kitchen & Breakout Area

1 x Welcome Area

● WORKSPACE ● MEETING ROOMS ● KITCHEN & BREAKOUT ● WELCOME AREA



SQUARE MILE STYLE

Situated in the heart of the City of London, the building offers excellent transport links with Bank, Monument, Liverpool Street and Fenchurch Street stations nearby. The area is surrounded by restaurants, cafés, and retail amenities, creating a lively and convenient setting for occupiers.



THE JAMAICA WINE HOUSE



LEADENHALL MARKET



LLOYD'S OF LONDON



THE MONIKER



RESTAURANTS

- | | |
|------------------------------------|-----------------------|
| 1. Al Volo | 12. Brigadiers |
| 2. The Ivy City Garden | 13. 14 Hills |
| 3. Duck & Waffle | 14. Fortnum & Mason |
| 4. Hawksmoor | 15. Bob Bob Ricard |
| 5. City Social | 16. Omnino |
| 6. Temper City | 17. Darwin Brasserie |
| 7. Le Relais de Venise l'Entrecôte | 18. Blacklock |
| 8. Brasserie Blanc | 19. Paradise Green |
| 9. Caravan | 20. Köd |
| 10. Searcy's | 21. Gaucho |
| 11. 1 Lombard Street | 22. The Moniker |
| | 23. Leadenhall Market |

PUBS & BARS

- | | |
|----------------------|------------------------|
| 1. Clays | 9. Savage Garden |
| 2. The Alchemist | 10. Brewdog |
| 3. Oyster Shed | 11. The Banker |
| 4. Leadenhall Market | 12. Jamaica Wine House |
| 5. MNM | 13. Cock & Woolpack |
| 6. The Vintry | 14. Dave's Wine Bar |
| 7. Vagabond | 15. The Folly |
| 8. Eastcheap Records | 16. Sky Pod Bar |

HOTELS

- | | |
|--------------------|--------------------------|
| 1. Threadneedles | 5. The Four Seasons |
| 2. The Ned | 6. Pan Pacific |
| 3. Counting House | 7. Sir Devonshire Square |
| 4. The Chamberlain | |

CAFÉS

- | | |
|------------------------|-----------------|
| 1. Ozone Coffee | 3. Notes Coffee |
| 2. Blank Street Coffee | 4. The Counter |
| | 5. Mouse Tail |



34 LIME ST

— L O N D O N E C 3 —

AVISON
YOUNG

JAMES WALKER

07957 388 184

james.walker@avisonyoung.com

DANIEL GILBERT

07879 475 112

daniel.gilbert@avisonyoung.com

CHARLES HENRY

07442 485 123

charles.henry@avisonyoung.com

Important notice relating to the Misrepresentation Act 1967 and the Property Misdescriptions Act 1991: (i) the particulars are set out as a general outline only for guidance of intending purchasers or lessees and do not constitute, nor constitute part of, an offer or contract (ii) all descriptions, dimensions, references to condition and necessary permission for use and occupation, and other details are given in good faith and are believed to be correct, but any intending purchasers or occupiers should not rely on them as statements or representations of fact, but must satisfy themselves by inspection or otherwise as to the correctness of each of them. November 2025

Marketing: [Stuart Chapman Design](#)