

# Unit D Kennetside Industrial Estate

LOGICOR.EU

Bone Lane, Newbury, RG14 5PX  
WHAT3WORDS: bleak.until.trade

Modern industrial / warehouse unit

31,672 sq ft available as a whole  
or split from 7,210 sq ft to 24,462 sq ft

To let

Comprehensively refurbished - available now



# Unit D Kennetside Industrial Estate

The estate is an established warehouse / industrial location situated to the East of Newbury Town Centre.

Unit D is a self-contained free-standing workshop/warehouse property incorporating ground and first floor offices. The unit benefits from ample car parking spaces. This estate is set within a well established commercial location with high profile local occupiers including Screwfix, Travis Perkins and Tool Station. The site is half a mile from A339, which connects directly to J13 of M4, 4 miles to the north.



Bone Lane





## Accommodation

Unit	Warehouse <sup>Sq Ft</sup>	GF Office <sup>Sq Ft</sup>	FF Office <sup>Sq Ft</sup>	Total <sup>Sq Ft</sup>
D	24,848	3,413	3,411	<b>31,672</b>

\*Gross Internal Area

### Availability & terms

The units are offered to let on a new full repairing and insuring lease for a term to be agreed.

### Rental

Upon application.



### VAT

To be levied.

### Service charge

Payable for upkeep of common parts.

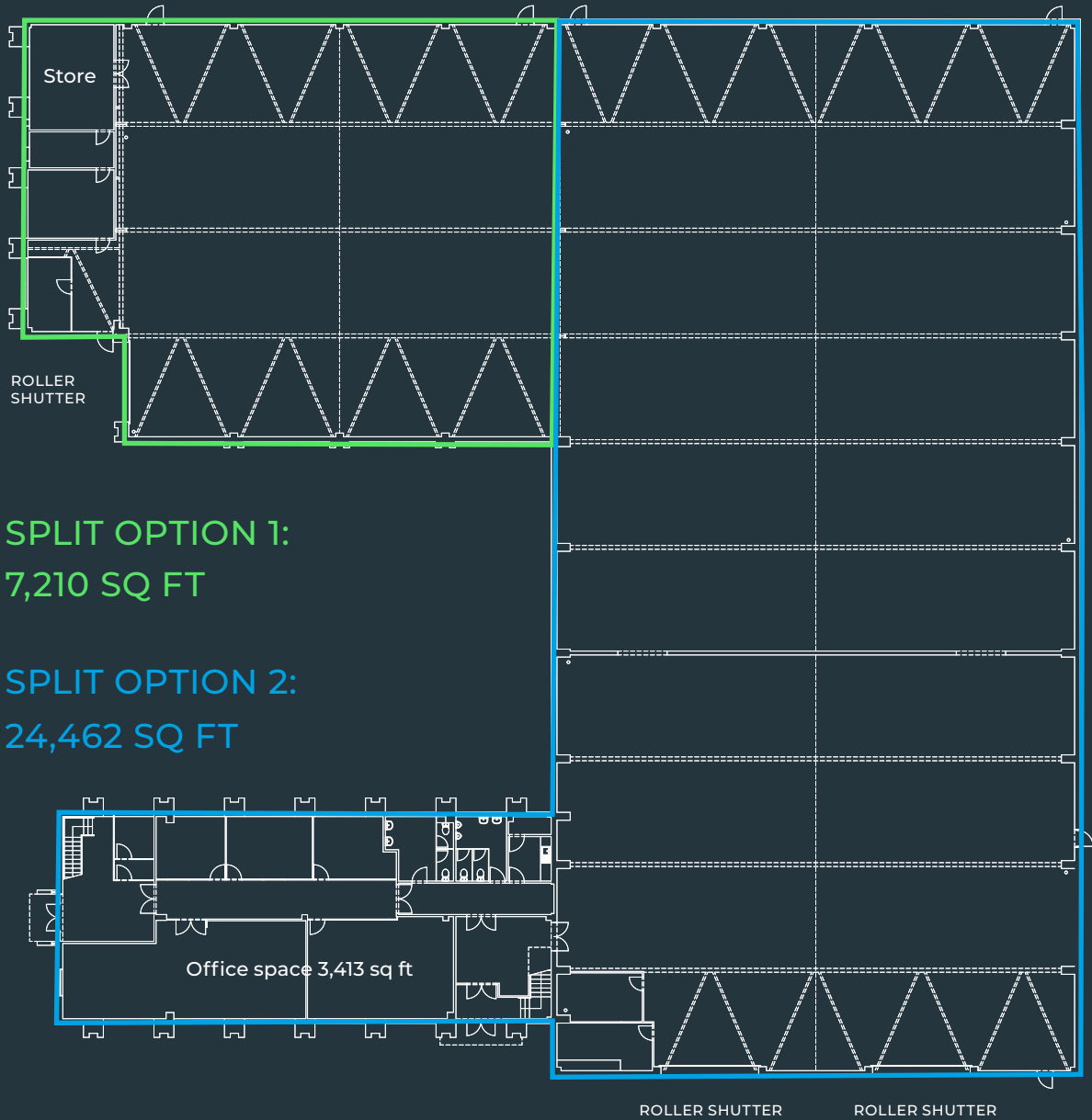
## Specification

-  LED lighting
-  Target EPC rating 'B'
-  Three phase power
-  5m eaves height
-  Mains gas
-  Air source heat pump
-  Exceptional car parking
-  3 level access loading doors
-  Office space

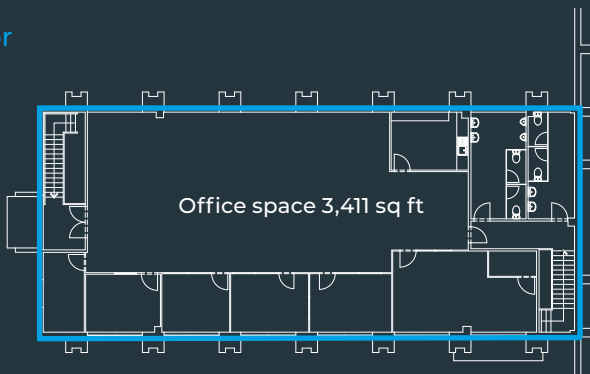


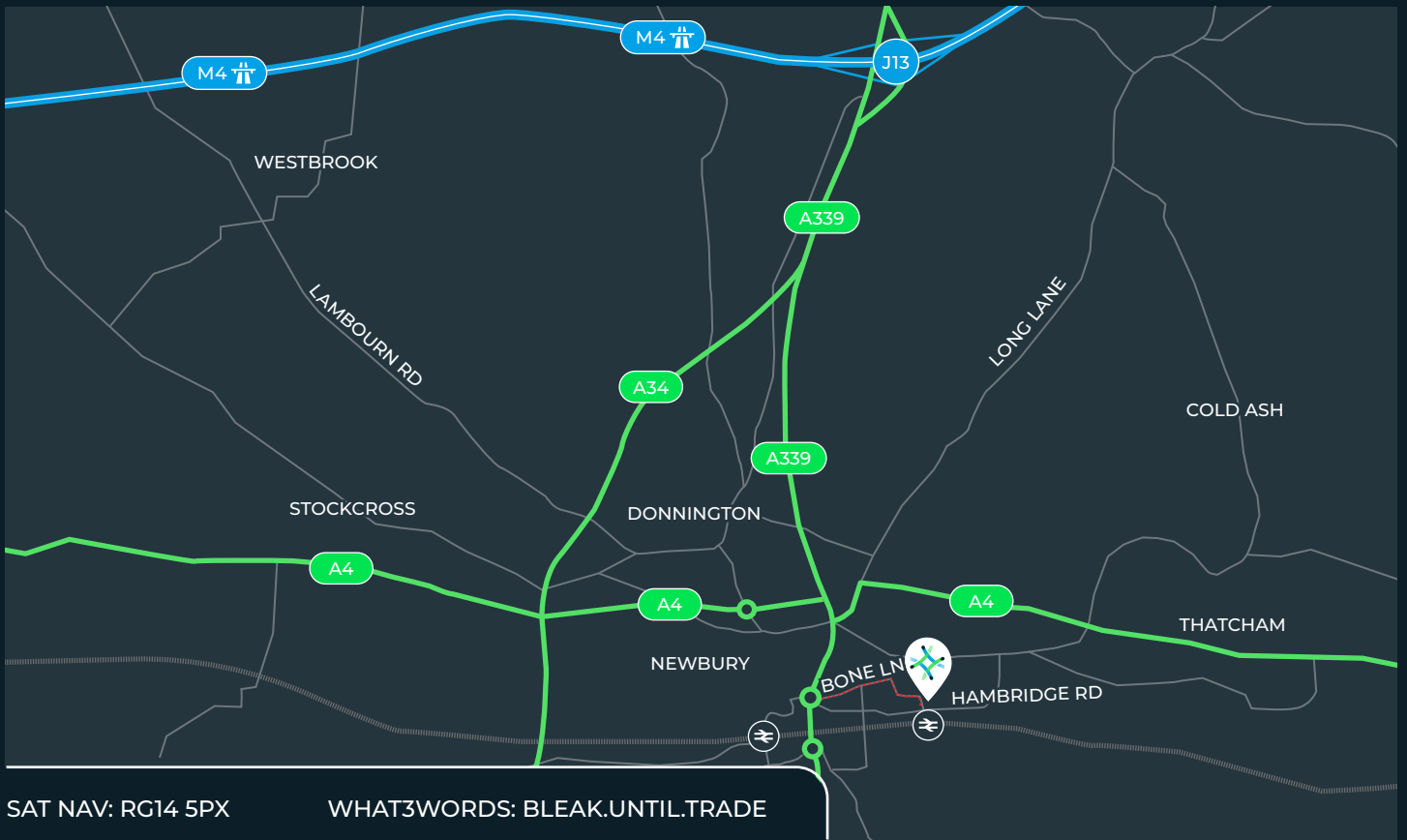
# Floorplan

## Ground floor



## First floor





SAT NAV: RG14 5PX

WHAT3WORDS: BLEAK.UNTIL.TRADE

# Strategic logistics location

Kennetside is located off Bone Lane which is in the heart of Newbury's most established industrial estate. It is situated approx. ½ mile to the east of Newbury Town Centre and can be accessed from the A339 which runs North South through the town or from the A4 which runs East West and connects with Thatcham 4 miles to the East.

	miles	mins		mins		miles	mins
M4	5	11	N'Bury Racecourse	14 (walk)	Reading	21	35
M3	19	31	Newbury	6	Bristol	66	1hr 10
M40	44	53	Thatcham	13	London	61	1 hr 34
M25	44	54	London Paddington	52	Birmingham	104	1 hr 45

Please contact us for further information:

 **HASLAM'S**  
CHARTERED SURVEYORS  
**0118 921 1515**  
WWW.HASLAM'S.CO.UK

 **QUINTONS**  
**01635 551441**

**Alec White**  
+44 (0) 7775 595174  
alecwhite@haslams.co.uk

**Shane Prater**  
+44 (0) 7836 215126  
shane@quintons.co.uk

**Ed Ponting**  
+44 (0) 7921 404659  
edponting@haslams.co.uk

Unit D, Kennetside Industrial Estate  
Bone Lane, Newbury, RG14 5PX



Fourth Floor,  
30 Broadwick Street,  
London, W1F 8JB

LOGICOR.EU  
ukenquiries@logicor.eu