

# DM HALL

## To Let

Flexible Office Space



Mitchell House,  
Leith, Edinburgh,  
EH6 7BD

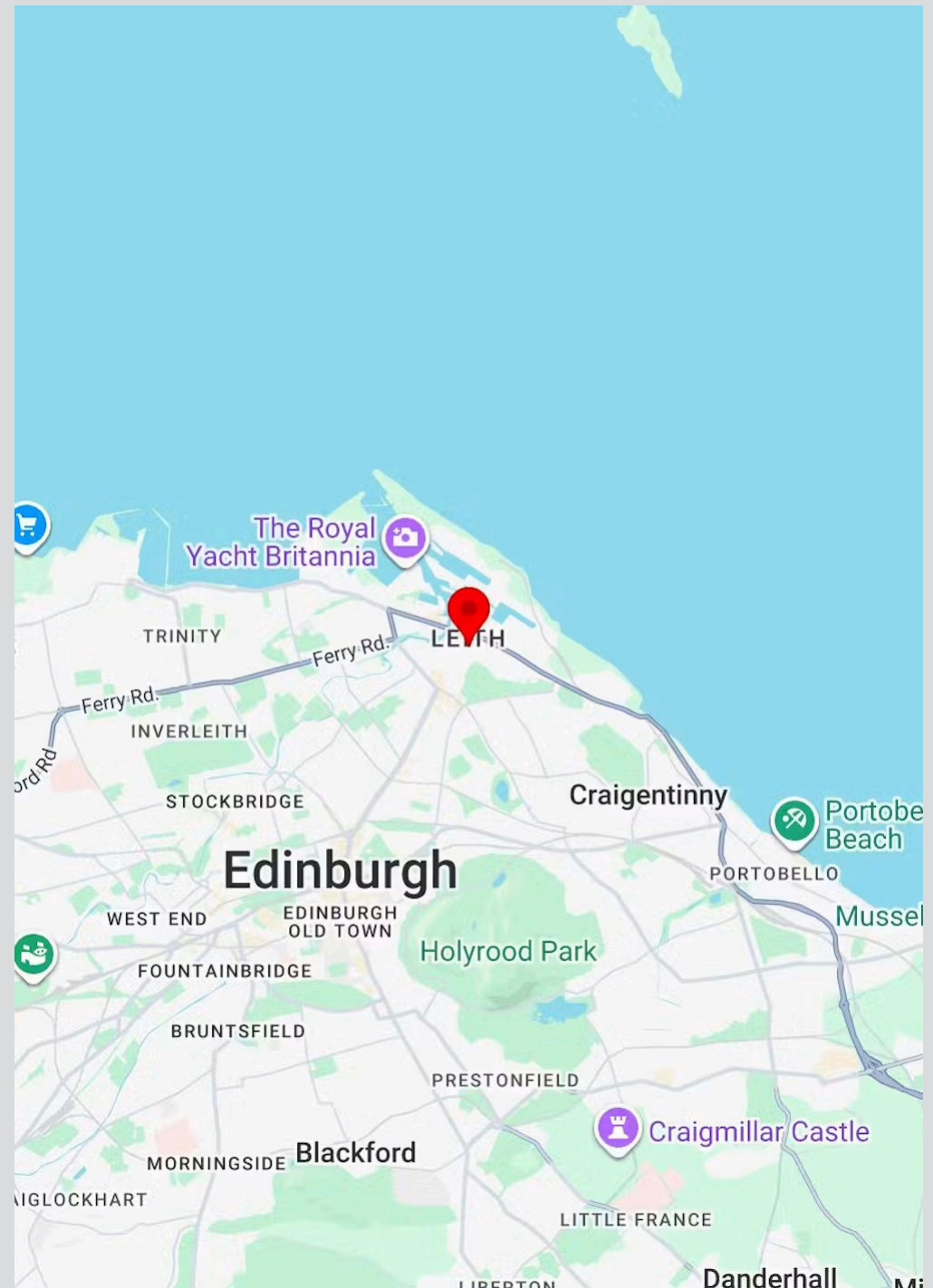
3,000 to 6,020 sq ft  
(278.71 to 559.28 sq m)

- Flexible office space in highly accessible area
- Two suites available for lease, containing 20-30 work stations and 12-24 Work Stations, respectively
- Located within close proximity to public transport links, including Edinburgh Tram and bus services
- Car parking spaces available (private lane)
- Open plan flexible office spaces
- Office Zone 4 - Ground floor 3,000 sq ft invites rental offers of £3,333 per month (No VAT applicable, includes rates)
- Office Zone 5- Ground Floor 3,020 sq ft invites rental offers of £2,083 per month (No VAT applicable)

## LOCATION

Situated in the vibrant and ever-evolving port district of Leith, Mitchell House occupies a well-regarded position within one of Edinburgh's most exciting and commercially active neighbourhoods. Leith has undergone a remarkable transformation over recent decades, establishing itself as one of the capital's most sought-after destinations for both business and leisure.

Leith sits approximately two miles north of Edinburgh city centre and benefits from excellent connectivity to the wider capital. The area is well served by Lothian Buses, with frequent services running directly into the city centre and across the broader Edinburgh network. The ongoing development of the Edinburgh Tram network, with its extension to Newhaven now operational, has further enhanced public transport accessibility to Leith, with Mitchell house located a mere 2-minute walk from nearest tram stop allowing access to the rest of Edinburgh's city centre and Edinburgh airport.



## DESCRIPTION

Mitchell House occupies a converted Victorian whisky bond, which has been carefully redeveloped to provide modern, high quality commercial office accommodation. The building retains considerable period character, with original industrial features complementing contemporary finishes throughout, giving the property a genuine sense of identity that sets it apart from more conventional office accommodation in the city.

The subjects comprise two self-contained ground floor office suites, each offering generous open plan accommodation suitable for a range of business uses. Both suites have been fitted out to a high standard, with the option for incoming occupiers to take the accommodation fully furnished upon request, allowing businesses to establish themselves and operate from day one with minimal disruption.

The suites benefit from shared access to an excellent range of communal facilities within the building, including WC facilities, a fully equipped kitchen, boardroom and breakout areas. The building further benefits from secure cycle storage and shower facilities, catering for those commuting by bicycle. Parking permits are available on Mitchell Street for those travelling by car.

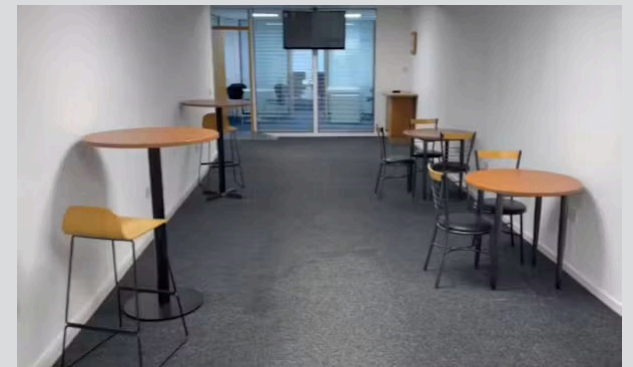
## FLOOR AREA

Available accommodation comprises the following areas:

Description	sq ft	sq m	Rent
Office Zone 4- Ground Floor	3,000	278.71	£3,333 /month
Office Zone 5- Ground Floor	3,020	280.57	£2,083 /month

## SERVICES:

The subjects benefit from mains electricity, gas water and sewage.



## LEASE TERMS:

Office Zone 4 Mitchell House is offered on a new internal repairing and insuring lease agreement, for a term to be agreed with asking rental offers of £3,333 pcm invited (No VAT applicable, inclusive of rates). Office Zone 5 £2,083 pcm (No VAT applicable) respectively.

## VAT

All prices quoted are exclusive of VAT which shall not be applicable.

## LEGAL COSTS

Legal Costs (each party to bear their own legal costs incurred throughout this transaction).

## PROPOSAL

All proposals to be submitted to the sole marketing agents.

## EPC

A+

## NON-DOMESTIC RATES

Rates Payable: According to the Scottish Assessors Association website, Office Zone 5 Mitchell House has a rateable value of £25,500. Information on Business Rates can be found at <https://www.saa.gov.uk/>

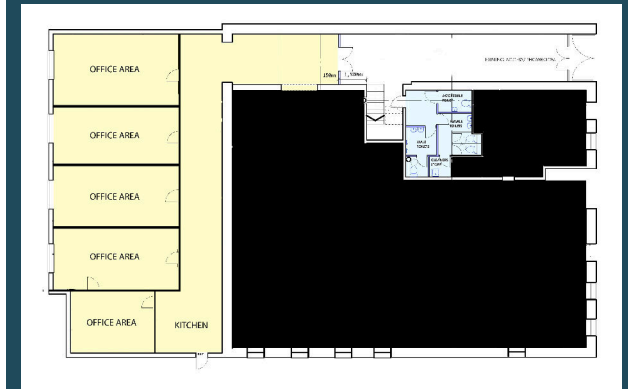
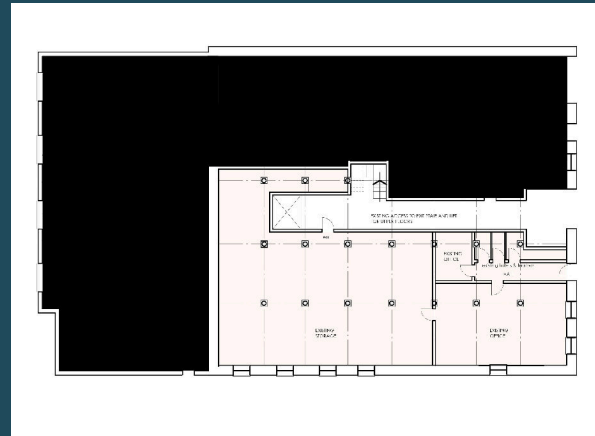
## VIEWING & FURTHER INFORMATION

Strictly by contacting the sole agents.

## ANTI-MONEY LAUNDERING

DM Hall is regulated by HMRC under the Money Laundering Regulations 2017, as amended by the Fifth Money Laundering Directive effective from 10 January 2020. In line with these regulations, we must carry out due diligence checks on all purchasers and vendors. Once an offer is accepted, the purchaser(s) or occupier(s) must provide proof of identity, address, and proof of funds before the transaction can proceed.

**DM HALL**



# Make an enquiry

Justin Akugbo

07880 151366

[justin.akugbo@dmhall.co.uk](mailto:justin.akugbo@dmhall.co.uk)

Oliver Lawson

07384 818 676

[oliver.lawson@dmhall.co.uk](mailto:oliver.lawson@dmhall.co.uk)

**DM Hall**

17 Corstorphine Road  
Edinburgh, EH12 6DD

0131 624 6130

IMPORTANT NOTE: DM Hall for themselves and for the vendors or lessors of this property, whose agents they are, give notice that: (i) The particulars are set out as a general outline only for the guidance of intended purchasers or lessees and do not constitute, nor constitute part of, an offer or contract. (ii) All descriptions, dimensions, reference to condition and necessary permissions for use and occupation, and other details are given without responsibility and any intended purchasers or tenants should not rely on them as statement or representation of fact but must satisfy themselves by inspection or otherwise as to the correctness of each of them. (iii) No person in the employment of DM Hall has any authority to make or give any representation or warranty whatever in relation to the property. (iv) All prices, premiums and rents quoted are exclusive of VAT. (v) The information contained in these particulars has been checked and, unless otherwise stated, it is understood to be materially correct at the date of publication. After these details have been printed, circumstances may change outside our control. (vi) These particulars are provided for record purposes only and are not intended to create, nor to be relied upon as creating, any contractual relationship or commitment. Any contract shall only be entered into by way of our clients' solicitors.

DATE OF PUBLICATION: JULY 2026