

GYM

# Harborne Court Suite E

67-69 Harborne Road, Birmingham, B15 3BU



Shared access with lift



To Let

6,313 sq ft of functional gym space



The building occupies a prime position within a well-established

# fitness ecosystem

driven by the concentration of complementary health, leisure and lifestyle businesses across Edgbaston Village. Strong participation and consistent daily use reinforce Harborne Court's position as a proven location for an engaged gym audience.

---



# Costs

---

## Rent

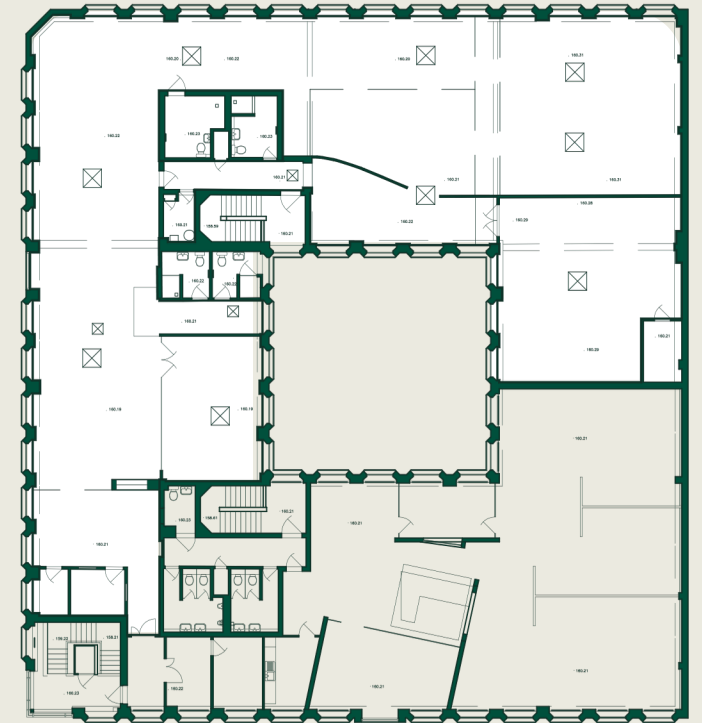
- POA



# Specification

## Ready for immediate occupation

- LED lighting
- Split direct expansion HVAC system
- Disabled passenger lift
- Male/female and disabled toilets and shower facilities
- Secure card access system to the building 24/7
- Designed in conjunction with DDA regulations
- CCTV monitoring
- Cycle rack shelter



Description	sq ft	sq m
First Floor	6,313	585.66
<b>TOTAL</b>	<b>6,313</b>	<b>585.66</b>



# Location

Perfectly positioned in Edgbaston, Harborne Court offers unrivalled connectivity for businesses, with fast and flexible links across Birmingham and the wider Midlands.

## Road

The nearby A456 and city ring road provide easy access by car, with seamless connections to the M5, M6, and the wider national motorway network.

## Rail

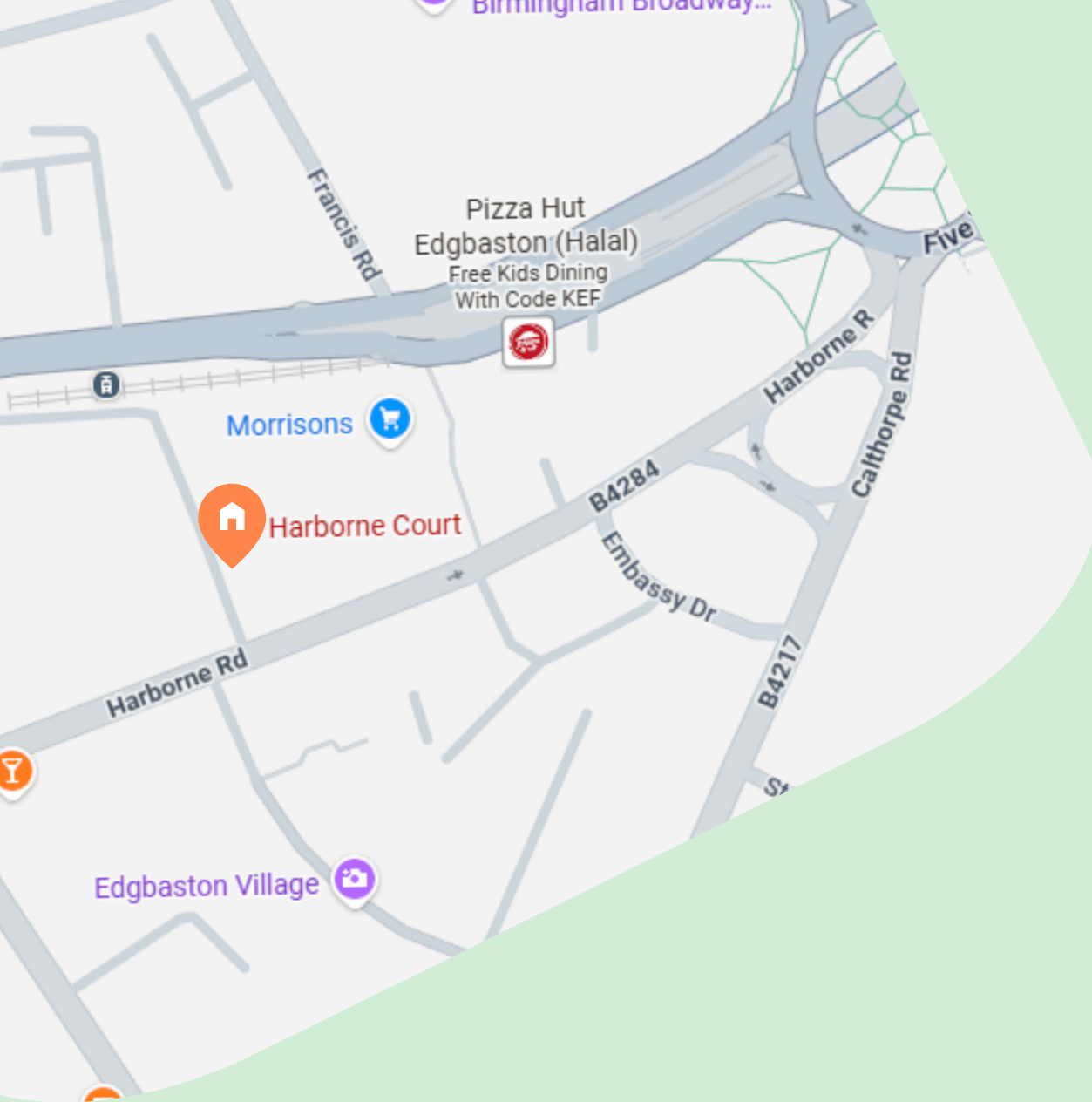
Just moments from Five Ways Station, occupiers benefit from swift and reliable rail links to Birmingham City Centre in under 10 minutes, with convenient onward connections across the wider Midlands and beyond.

## Bus

A range of nearby bus routes further enhances accessibility, connecting 30A Harborne Road to key destinations across Edgbaston and central Birmingham.

## Metro

The Edgbaston Village Metro stop offers quick and convenient access to Birmingham City Centre and the surrounding region, supporting effortless commuting for employees and visitors alike.





# Edgbaston Village

Ideally located on Harborne Road, in the heart of Edgbaston Village, this is a rare opportunity to secure space within one of Birmingham's most desirable districts.

Surrounded by a vibrant mix of independent restaurants, cafés, bars, and boutique retailers, the property benefits from a lively yet refined setting, perfect for balancing business with lifestyle.

Just moments from Five Ways Station and the Edgbaston Village Metro stop, occupiers enjoy swift and reliable links to Birmingham City Centre in under 10 minutes, with convenient onward connections across the wider Midlands and beyond.. While the nearby A456 and city ring road ensure easy access by car, with seamless links to the M5, M6, and national motorway network.

With its prime positioning, strong local catchment, and access to best-in-class amenities, 30A Harborne Road presents an outstanding opportunity for businesses seeking prominence and accessibility in one of Edgbaston's most dynamic destinations.



**Voted one  
of the 'best  
places to live  
in Britain'**

Sunday Times



**CALTHORPE  
ESTATES**

**Emma Cullinan**  
07919 324 915  
ecullinan@calthorpe.co.uk



**Julie Perks**  
07469 404 041  
Julie.Perks@rpcapital.co.uk



**Harvey Pearson**  
07387 165 367  
hp@hexagoncommercial.co.uk

**Creative Retail**

**Ed Purcell**  
07793 808 974  
ed@creative-retail.co.uk

**calthorpe.co.uk**

These particulars are for general information purposes only and do not represent an offer of contract or part of one. BNPPRE & Hexagon Commercial Property have made every attempt to ensure that the particulars and other information provided are as accurate as possible and are not intended to amount to advice on which you should rely as being factually accurate. You should not assume that the property has all necessary planning, building regulations or other consents and BNPPRE & Hexagon Commercial Property have not tested any services, facilities or equipment. Any measurements and distances given are approximate only. Purchasers must satisfy themselves of all of the aforementioned by independent inspection or otherwise. Although we make reasonable efforts to update our information, neither BNPPRE & Hexagon Commercial Property nor anyone in its employment or acting on its behalf makes any representations warranties or guarantees, whether express or implied, in relation to the property, or that the content in these particulars is accurate, complete or up to date. Our images only represent part of the property as it appeared at the time they were taken. If you require further information, please contact us.

**Creating *Exceptional* Places**