



HEALTHCARE / LEISURE / MIXED USE / RETAIL TO LET

## LAST REMAINING UNIT

Longford Park, Banbury, OX15 4GJ

LAST REMAINING, NEW BUILD, RETAIL OR LEISURE UNIT AT THE HEART OF  
LONGFORD PARK 1,000 NEWLY BUILT RESIDENTIAL UNITS WITH A  
FURTHER 825 SOON

1,603 SQ FT (148.92 SQ M)



**BNP PARIBAS  
REAL ESTATE**

[www.realestate.bnpparibas.co.uk](http://www.realestate.bnpparibas.co.uk)

## LAST REMAINING UNIT

Longford Park, Banbury, OX15

TO REQUEST A VIEWING CALL US



**BNP PARIBAS**  
**REAL ESTATE**

www.realestate.bnpparibas.co.uk

## DETAILS

### DESCRIPTION

Longford Park District Centre will comprises a Sainsbury Local convenience store, an Esquires Coffee, retail and leisure shops and a Busy Bees day nursery, supported by a 44 space shoppers car park.

### ACCOMMODATION

The accommodation comprises the following areas:

Name	sq ft	sq m	Availability
Unit - 1 (Sainsbury)	4,273	396.97	Let
Unit - 2 (Rumbles)	1,000	92.90	Let
Unit - 3	1,200	111.48	Under Offer
Unit - 4/5 (Esquires Coffee)	1,700	157.94	Let
Unit - 6	1,603	148.92	Available
Unit - Day Nursery (Busy Bees)	5,414	502.98	Let

### KEY FEATURES

- Longford Park is a community of 1,825 new homes situated to the south of Banbury town centre.
- The District Centre will be anchored by a new Sainsbury Local convenience store
- The scheme will be home to a new Busy Bees day Nursery
- Units pre-let to Esquires Coffee and Rumbles Fish Bar - 1 unit remaining
- The District Centre is scheduled to open in October 2026 - Now under construction
- Adjoining the District Centre is Longford Park primary school and Longford Park community Centre

### OUTGOINGS

- **Rent:** Rent on application
- **Rates:** To be assessed
- **Service charge:** To be confirmed

## LAST REMAINING UNIT

Longford Park, Banbury, OX15

TO REQUEST A VIEWING CALL US



**BNP PARIBAS  
REAL ESTATE**

[www.realestate.bnpparibas.co.uk](http://www.realestate.bnpparibas.co.uk)

## LOCATION



Longford Park is approximately 1.8 miles south of Banbury town centre and 3 miles north of Junction 11 of the M42.

The District Centre lies at the heart of Longford Park and is clustered around the crossroads where the two main arterial routes through the scheme intersect. The District Centre is easily accessible from the Oxford Road (A4260).

Additionally, the District Centre is ideally positioned at the main gateway to Phase two of Longford Park, which will deliver further 825 new homes over the coming years.

## CONTACT US

Gavin Redrupp  
[gavin.redrupp@realestate.bnpparibas](mailto:gavin.redrupp@realestate.bnpparibas)

BNP Paribas Real Estate (Retail and Alternative Markets)

24 Savile Row, London, W1S 2ES

[www.realestate.bnpparibas.co.uk](http://www.realestate.bnpparibas.co.uk)

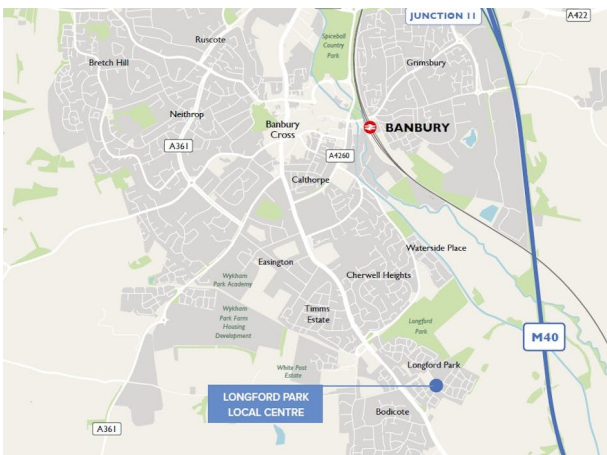
[realestate.enquiries@bnpparibas.com](mailto:realestate.enquiries@bnpparibas.com)  
[linkedin.com/company/bnp-paribas-real-estate/@BNPPRE\\_UK](https://www.linkedin.com/company/bnp-paribas-real-estate/@BNPPRE_UK)

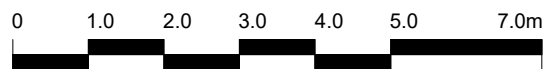
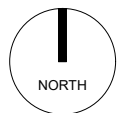
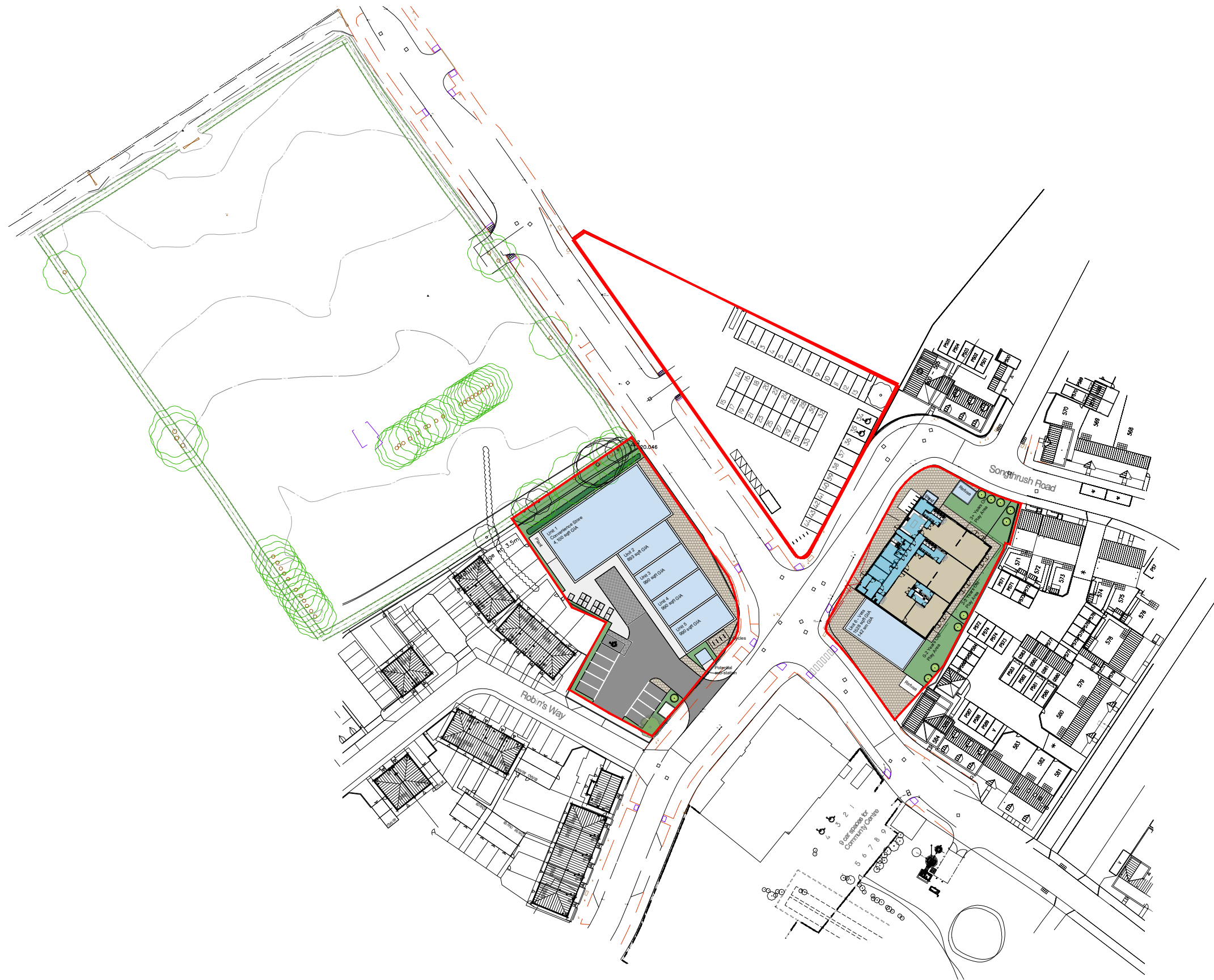
LAST REMAINING UNIT, LONGFORD PARK, BANBURY,  
OX15 4GJ

TO REQUEST A VIEWING CALL US ON



[www.realestate.bnpparibas.co.uk](http://www.realestate.bnpparibas.co.uk)





The copyright of this drawing is vested with Corstorphine & Wright Ltd and must not be copied or reproduced without the consent of the company.

Rev.	Description	Date	Drw.	Chk.

Client  
HDD

Project  
New Local Centre  
Longford Park, Banbury

Drawing Title  
Overall Site Plan

Drawing Status  
FEASIBILITY

**Corstorphine & Wright**

Tamworth Studio  
5 Aldergate, Tamworth, B79 7DJ  
01827 671 23

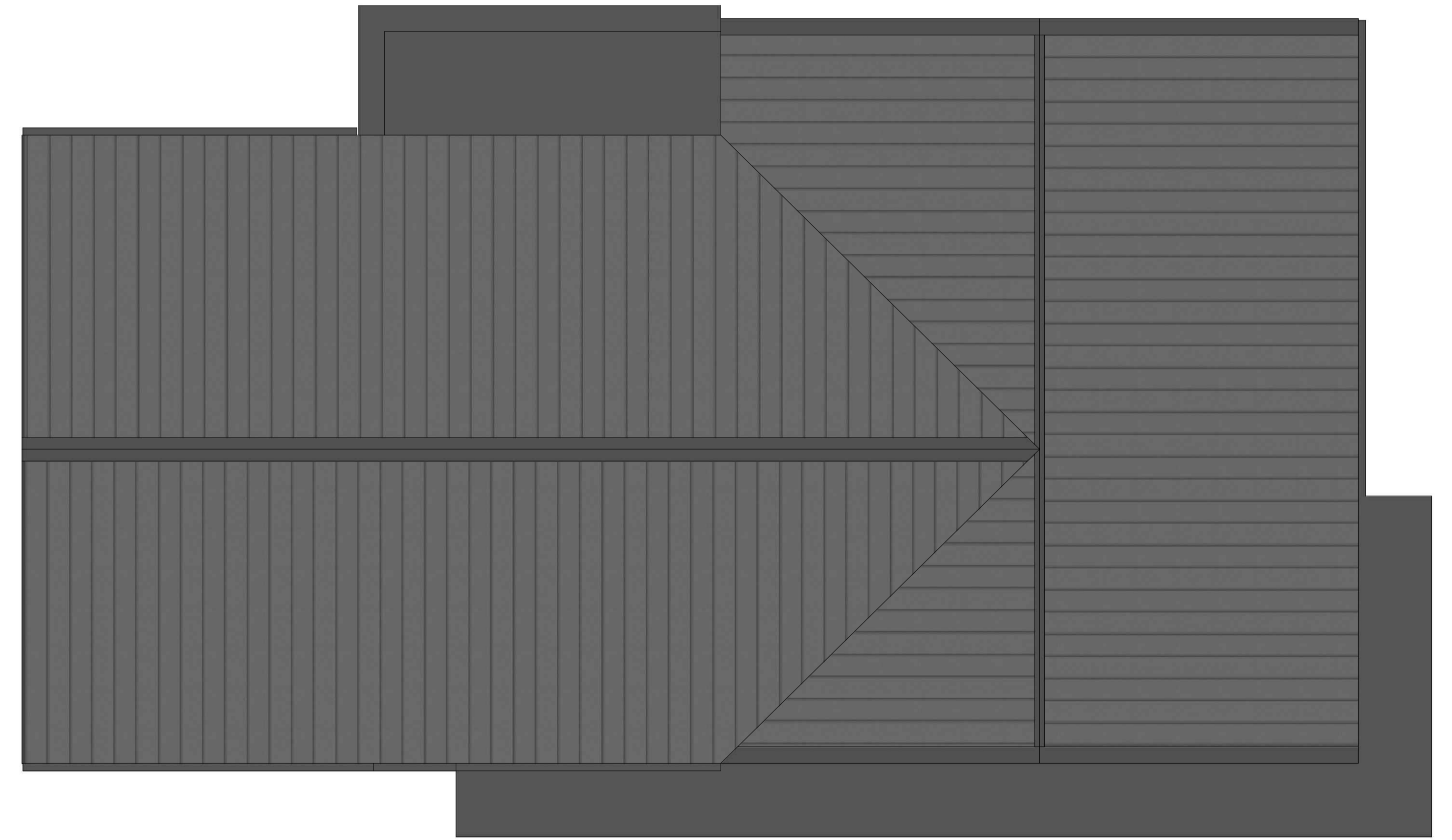
corstorphine-wright.com

Drawing No. 23981-SK0003-02				Revision 00
--------------------------------	--	--	--	----------------

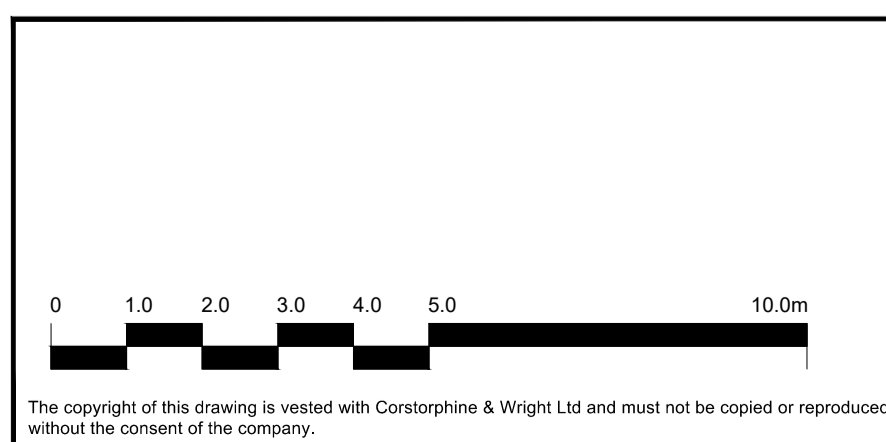
Drawn CH	Checked CC	Paper Size A3	Scale 1:1000	Date 23-01-24
-------------	---------------	------------------	-----------------	------------------



1 Proposed Ground Floor Plan  
1:100



2 Proposed Roof Plan  
1:100



P-02	Updated Room Areas	05-04-24	CH	CC
P-01	Updates to Nursery and Retail Unit	04-04-24	CH	CC
P-00	Initial Issue	27.03.24	JW	CH
Rev.	Description	Date	Drw.	CHK.

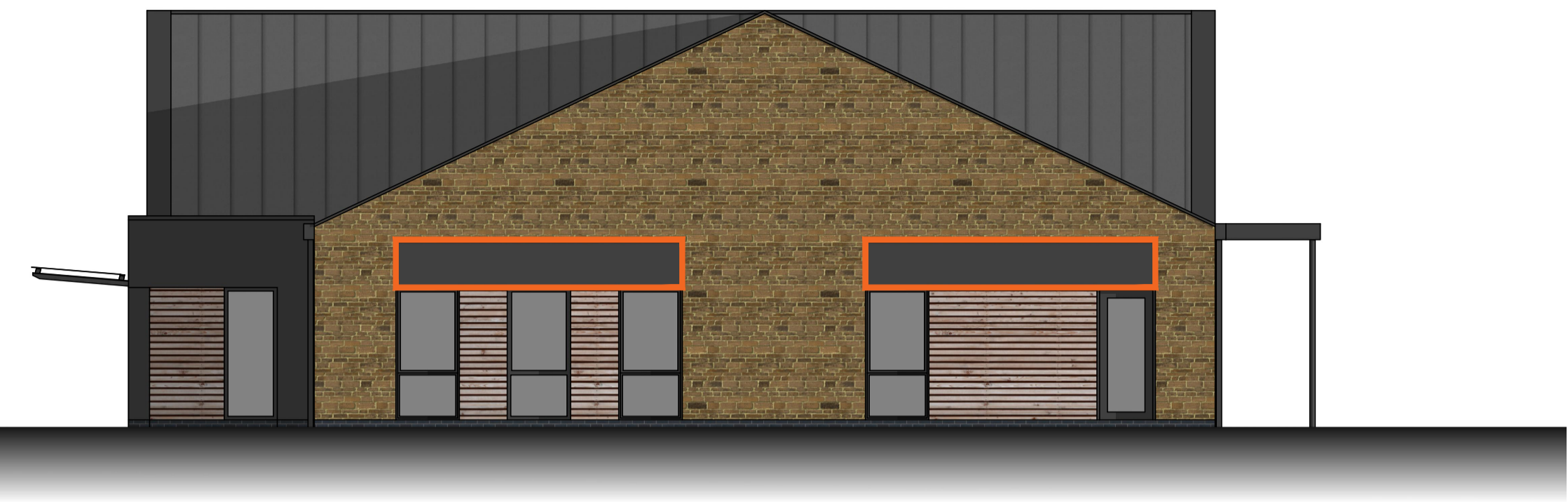
Client HDD	
Project Longford Park Banbury	
Drawing Title Proposed Floor and Roof Plans	
Drawing Status PLANNING	Revision P-02

**Corstorphine & Wright**  
 Tamworth Studio  
 5 Aldergate, Tamworth, B79 7DJ  
 01827 671 23  
 corstorphine-wright.com

Drawing No. 23981-0321	Revision P-02
Drawn JW	Checked CH
Paper Size A1	Scale 1:100
Date 26.03.24	



1 Proposed Front Elevation  
1:100



2 Proposed Side Elevation A  
1:100



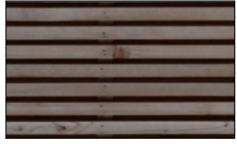










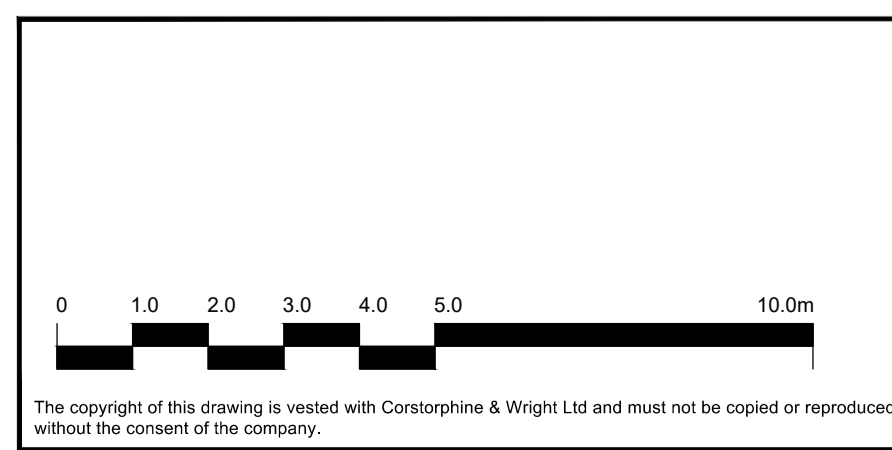
3 Proposed Rear Elevation  
1:100



4 Proposed Side Elevation B  
1:100

5 Materials Key

	Horton Stone		Composite profiled insulated roof panels
	Horizontal timber cladding		Powder coated aluminium window & door frame units
	powder coated projecting entrance canopy to Nursery		"Buff" colour facing brickwork
	Powder coated aluminium projecting canopy to Nursery		External Plant Unit
			Proposed Signage Zones to Nursery & Retail Units
			Powder coated aluminium panels to head of entrance doors
			Powder coated aluminium box gutters & rwp's



Rev	Description	Date	Drw	Chk
P-08	Materials updated	14.04.25	JW	CH
P-07	Materials updated	10.04.25	JW	CH
P-06	Updated to show external plant units	24-03-25	CH	CC
P-05	Revised position of Signage Zone, added canopy over entrance door	16-09-24	CH	CC
P-04	Updated in line with Client comments	29-08-24	CH	CC
P-03	Updated materials key	12-04-24	CH	CC
P-02	Added signage zones to units	08-04-24	CH	CC
P-01	Updated nursery and retail unit	04-04-24	CH	CC
P-00	Initial Issue	27.03.24	JW	CH

Client HDD	<b>Corstorphine &amp; Wright</b> Tamworth Studio 5 Aldergate, Tamworth, B79 7DJ 01827 671 23 <a href="http://corstorphine-wright.com">corstorphine-wright.com</a>			
Project Longford Park Branbury				
Drawing Title Proposed Elevations				
Drawing No. 23981-0331				
Drawing Status PLANNING	Revision P-08			
Drawn JW	Checked CH	Paper Size A1	Scale 1:100	Date 20.03.24