

# UNIT 9

Modern industrial / warehouse unit

8,923 sq ft / 829 sq m

**SILVERSTONE  
PARK**

AVAILABLE FOR OCCUPATION FROM JUNE 2025

**/ THE CAMPUS FOR FUTURE INNOVATION**

TOGETHER **W<sub>e</sub>** CHANGE THE WORLD



# THE CAMPUS

Silverstone Park is the technology and advanced engineering campus that's defining our futures.

Building on its reputation as an unparalleled hub of innovation, our unique campus helps to maximise productivity for the 90+ businesses that call it home, ranging from ambitious SMEs and start-ups to global industry leaders.

Becoming part of our welcoming community also brings unrivalled opportunities to work alongside like-minded pioneers in a globally renowned, centrally located environment.

Additionally, Silverstone Park boasts four next-generation centres of excellence on-site, providing businesses with direct access to vital engineering equipment and R&D capabilities.

## WORLD-CLASS SPECIALIST FACILITIES

- > Electromagnetic Testing
- > Industrial Metrology
- > Sports Engineering Testing
- > Digitalised Additive Manufacturing





# THE BUILDING

Unit 9 is an end of terrace modern industrial / warehouse unit, located to the east of the campus.

The unit features steel portal frame construction with modern profile steel cladding and offers a range of high-quality amenities, including an electric level access loading door, a three-phase power supply, and a ground floor office with ancillary accommodation.

## ***SPECIFICATION***

- › Modern industrial / warehouse unit
- › Three phase power supply
- › Open plan offices accommodation with separate meeting rooms and kitchen
- › Prominently located adjoining Silverstone Racing Circuit
- › 1st floor mezzanine area for additional storage
- › Excellent allocated car parking and loading provisions to the front





# THE SPACE

Unit 9 provides excellent allocated car parking and loading provisions to the front and is set within an attractive courtyard-style layout.

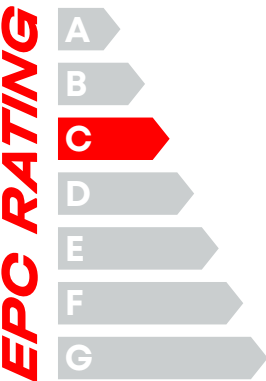
## ACCOMMODATION

The building provides the following approximate gross internal floor areas:

| Description  | sq ft        | sq m       |
|--------------|--------------|------------|
| Ground       | 7,051        | 655        |
| First Floor  | 1,872        | 174        |
| <b>TOTAL</b> | <b>8,923</b> | <b>829</b> |

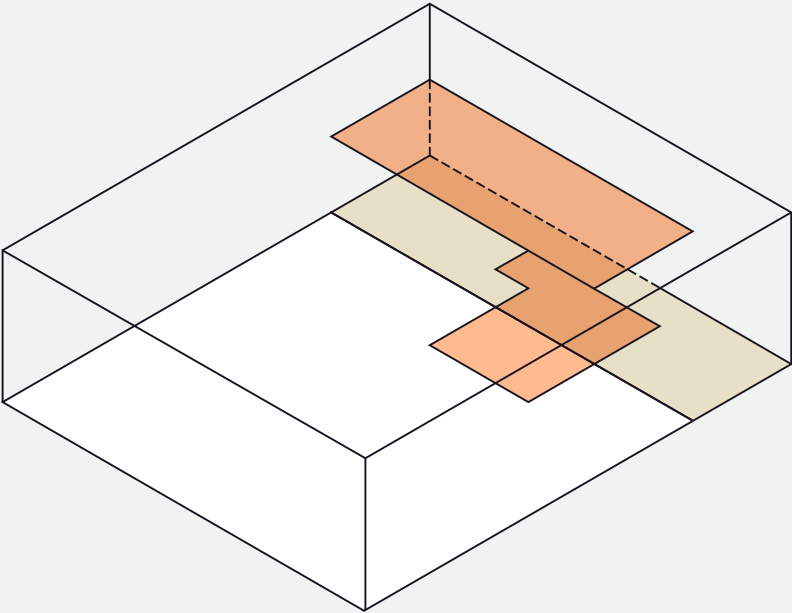
## PLANNING

B1b, B1c, B2 or B8 uses.



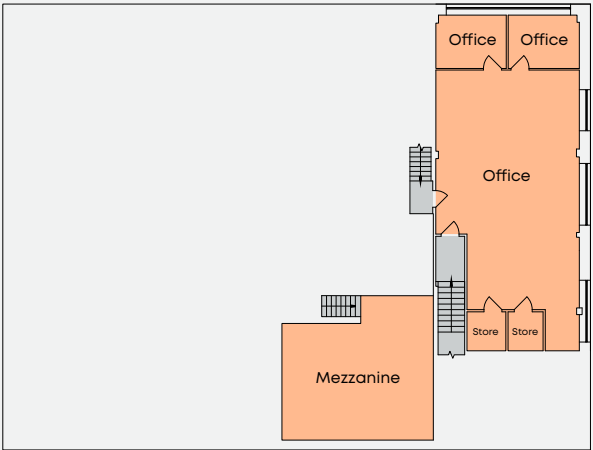
### Key

- Main Ground Floor Workspace
- Ground Floor Office Space
- First Floor Space

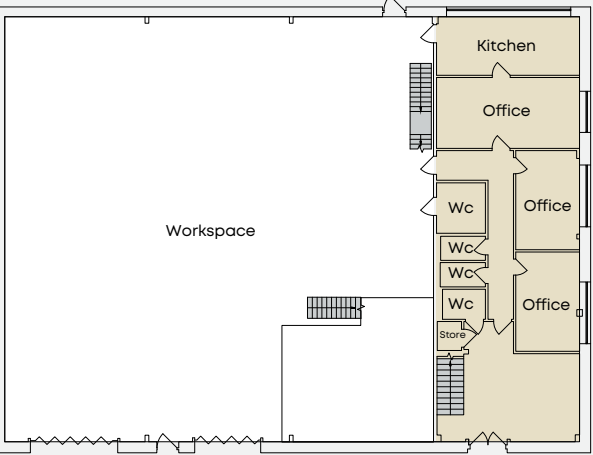


Isometric view of space

### First Floor



### Ground Floor



# THE FLEXIBILITY

Silverstone Park offers a diverse range of adaptable workspaces, equipping tenants with the essential tools to start, scale and succeed in their businesses.



### **VIRTUAL TENANCY**

Virtual tenancies are perfect for businesses that don't require a fixed office but want to project a professional image with the credibility of the Silverstone brand. Virtual tenants can also benefit from the Park's networking opportunities, community events and access to meeting rooms when needed.



### **AGILE WORKSPACE**

The Innovation Centre features Silverstone Park's agile workspace, designed to offer the perfect location to work day-to-day on an ad hoc basis. The space also includes acoustic swivel booths for private calls and a comfy sofa area ideal for informal meetings, get-togethers and presentations.



### **OFFICE SPACE**

High-quality office space is crucial for fostering productivity, enhancing employee well-being and creating a professional environment that reflects the values and aspirations of a business. Silverstone Park's offices are available on simple, flexible terms and include access to kitchen facilities as well as a friendly reception team to welcome employees and guests.



### **COMMERCIAL SPACE**

The superior quality of Silverstone Park's commercial space is evidenced by the world-leading businesses that have chosen to make it their home. The Park can accommodate any business requirement, from small flexible-term workshops to R&D units and large industrial spaces with long leases.



### **BESPOKE BUILDS**

For businesses that require a custom solution beyond what is readily available, bespoke industrial builds are essential for optimising operational efficiency and creating a platform for future growth. Silverstone Park can facilitate the design and construction of large-scale bespoke buildings, precisely tailored to enable a business to reach its goals and propel success.

**S T A R T S C A L E S U C C E E D**



# JOIN US

If you're an ambitious and innovative business looking to start, scale or succeed, please get in touch.

Click / Scan QR for more:

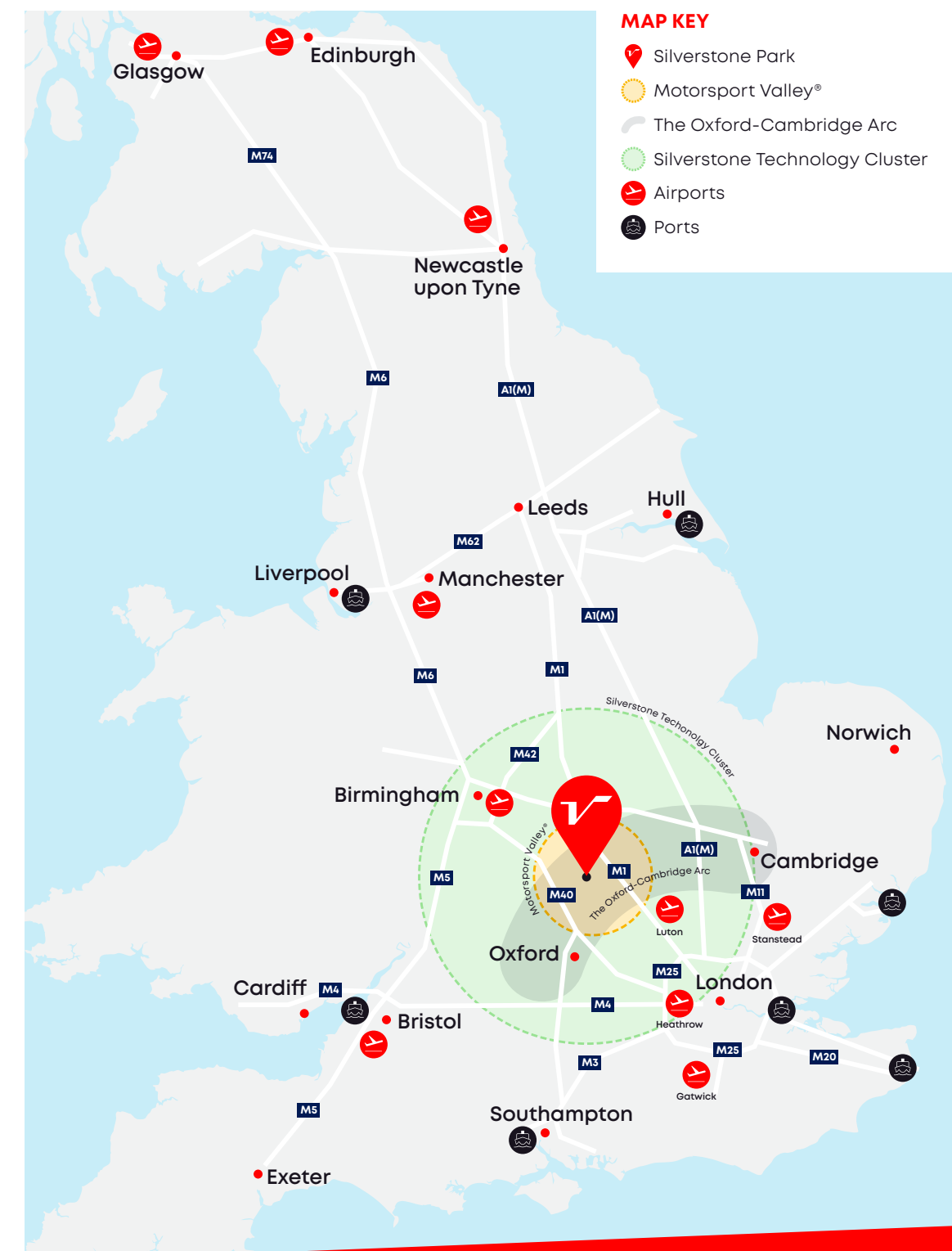
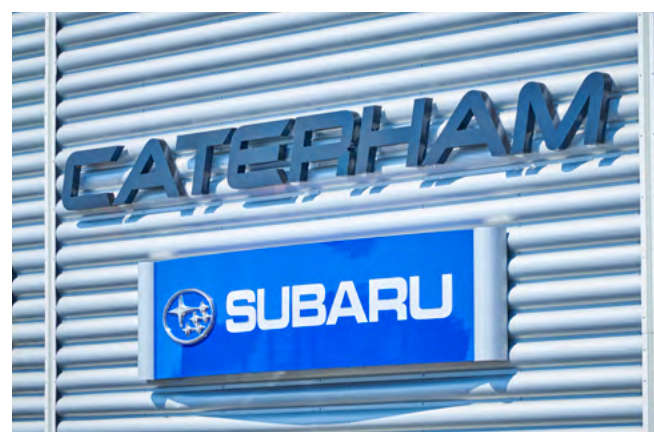


These particulars contain general information only (Particulars) to assist interested purchasers/lessees (Recipients) and may not be accurate, complete or up to date. These Particulars should not be relied upon, and no responsibility or liability is or will be accepted by the vendor/lessor or its agent(s) (or by any subsidiary or respective officer/employee) for the adequacy, accuracy or completeness of these Particulars (or of any other information, notice or document supplied or made available to Recipients). "Responsible Property Investment ("RPI"). Hermes Real Estate Investment Management Limited/Hermes Investment Management Limited defines RPI as "investment that recognises and addresses the environmental, social and economic risks and opportunities associated with the ownership and management of property assets." This property has been developed recognising this policy. Hermes Real Estate Investment Management Limited/Hermes Investment Management Limited encourages Occupiers to embrace its RPI policy." Lease Code: Follow the [www.commercialleasecode.co.uk](http://www.commercialleasecode.co.uk)



## LOCATION

Silverstone Park, situated at the heart of the UK, lies within Motorsport Valley® and the Oxford-Cambridge Arc, offering excellent access to the rest of the country.



[SILVERSTONE-PARK.COM](http://SILVERSTONE-PARK.COM)

Silverstone Park / Silverstone / NN12 8GX

TOGETHER  e CHANGE THE WORLD