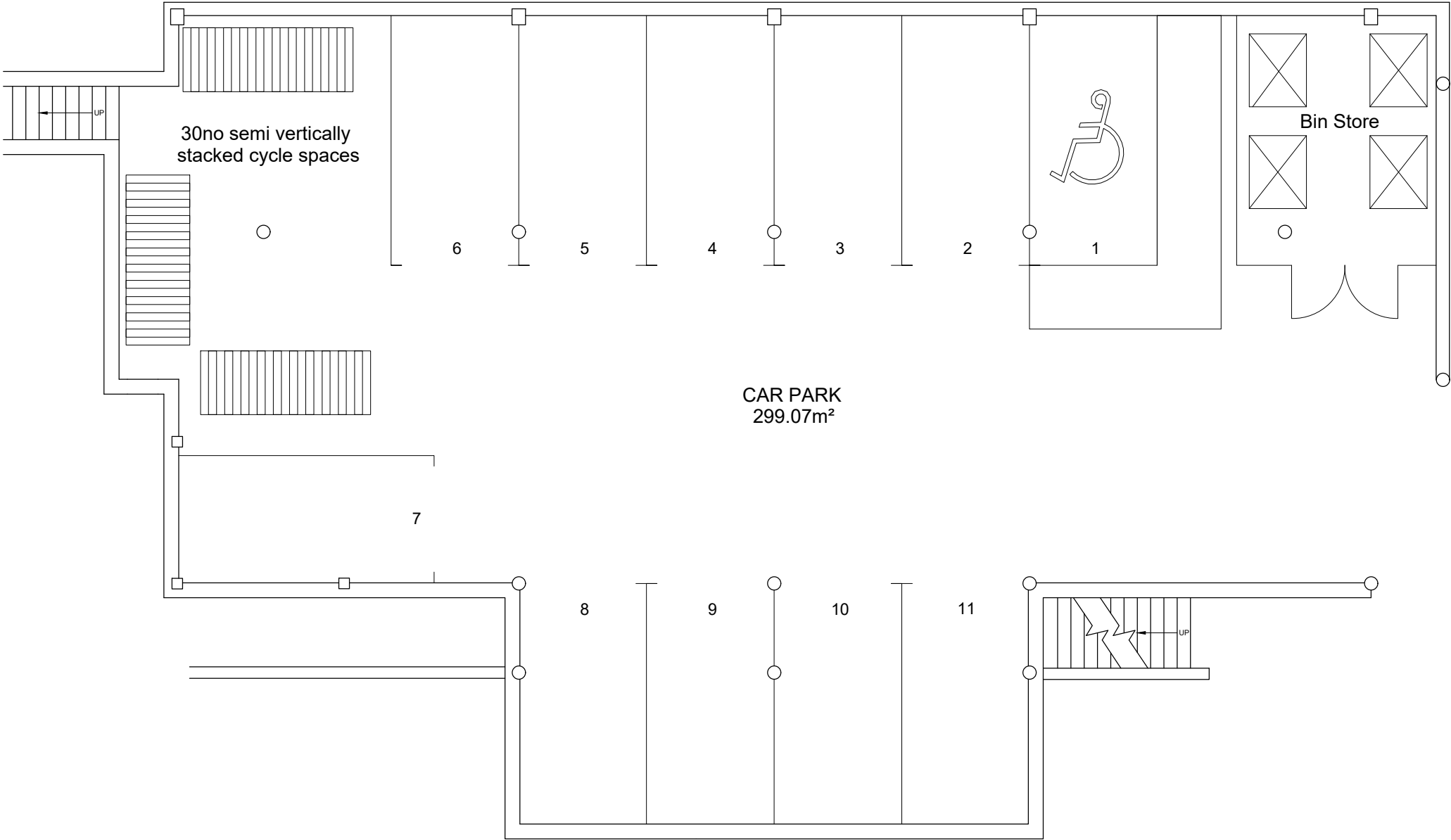
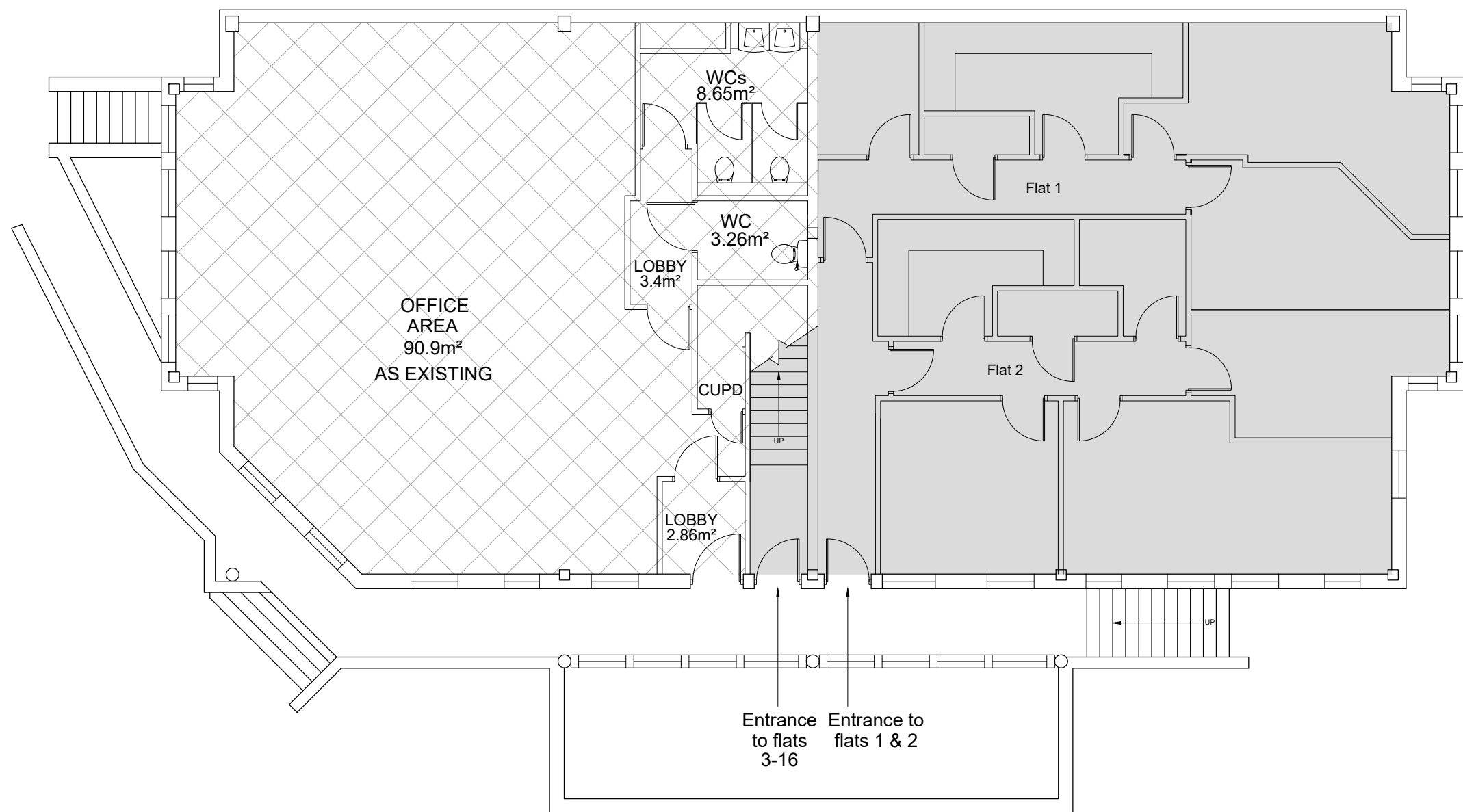


DO NOT SCALE FROM THIS DRAWING
All figured dimensions must be accurately checked on site in full

—	—	—	—
Nr.	Revision	Date	Ch.
Title			
PROPOSED BASEMENT LAYOUT			
Project PERMITTED DEVELOPMENT AT 36 RAILWAY APPROACH, HARROW (VERTICAL EXTENSION – RESIDENTIAL FLATS)			
Client TLC GROUP 36 RAILWAY APPROACH HARROW			
Scale 1:100 @ A3	Drawing Number 11		
Date AUGUST 2025			
Drawn by —	Checked by —	Revision B	



BASEMENT FLOOR PLAN
AS EXISTING EXCEPT FOR THE ADDITION OF 30 CYCLE SPACES, DEDICATED BIN
STORE AND DISABLED BAY (LOSS OF 3 NO EXISTING PARKING SPACES)



GROUND FLOOR PLAN

-	-	-	-
Nr.	Revision	Date	Ch.

Title

PROPOSED GROUND FLOOR LAYOUT

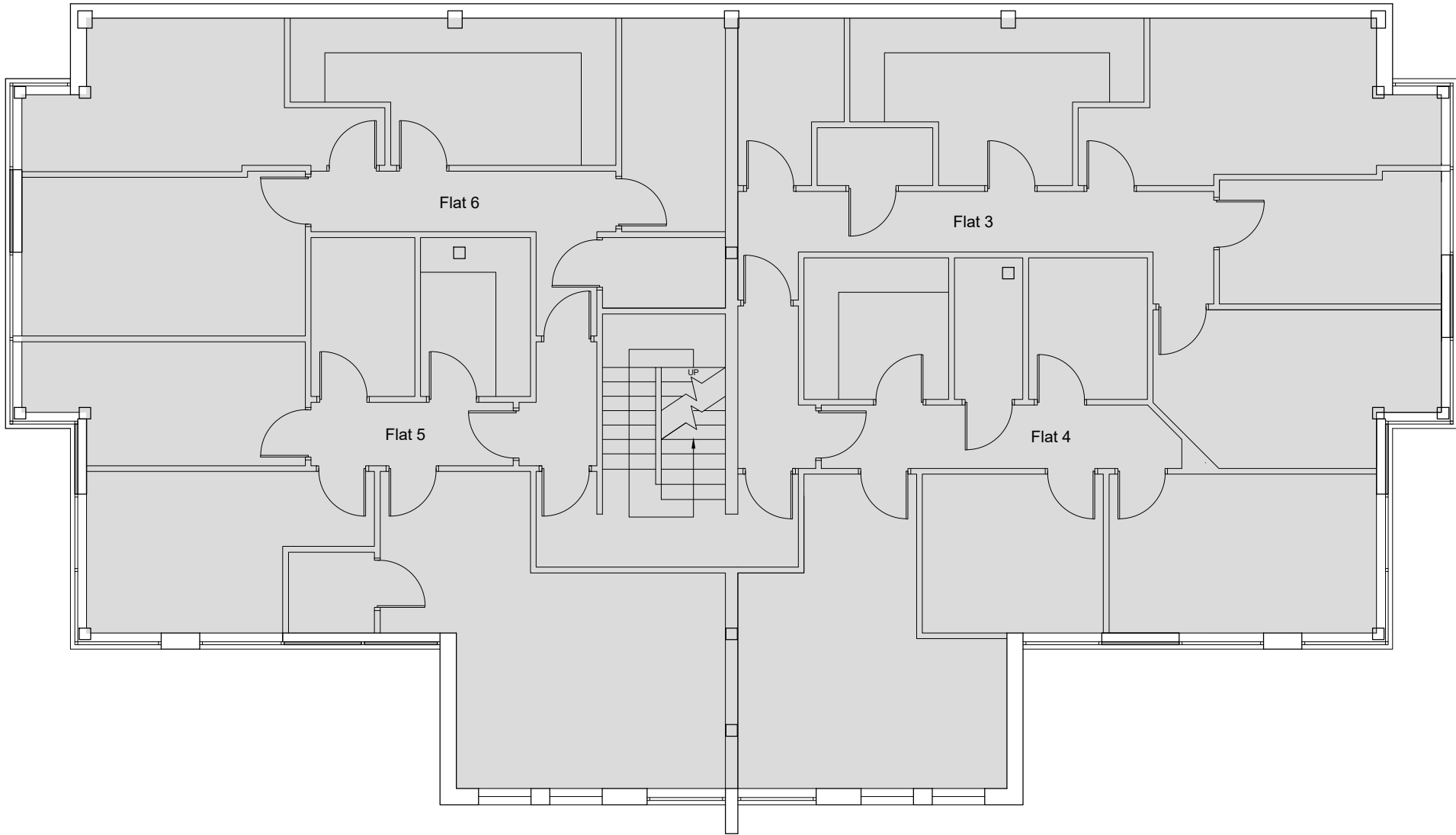
Project

PERMITTED DEVELOPMENT AT 36
RAILWAY APPROACH, HARROW
(VERTICAL EXTENSION – RESIDENTIAL
FLATS)

Client

TLC GROUP
36 RAILWAY APPROACH
HARROW

Scale	Drawing Number	
1:100 @ A3	12	
Date		
AUGUST 2025		
Drawn by	Checked by	Revision
-	-	B

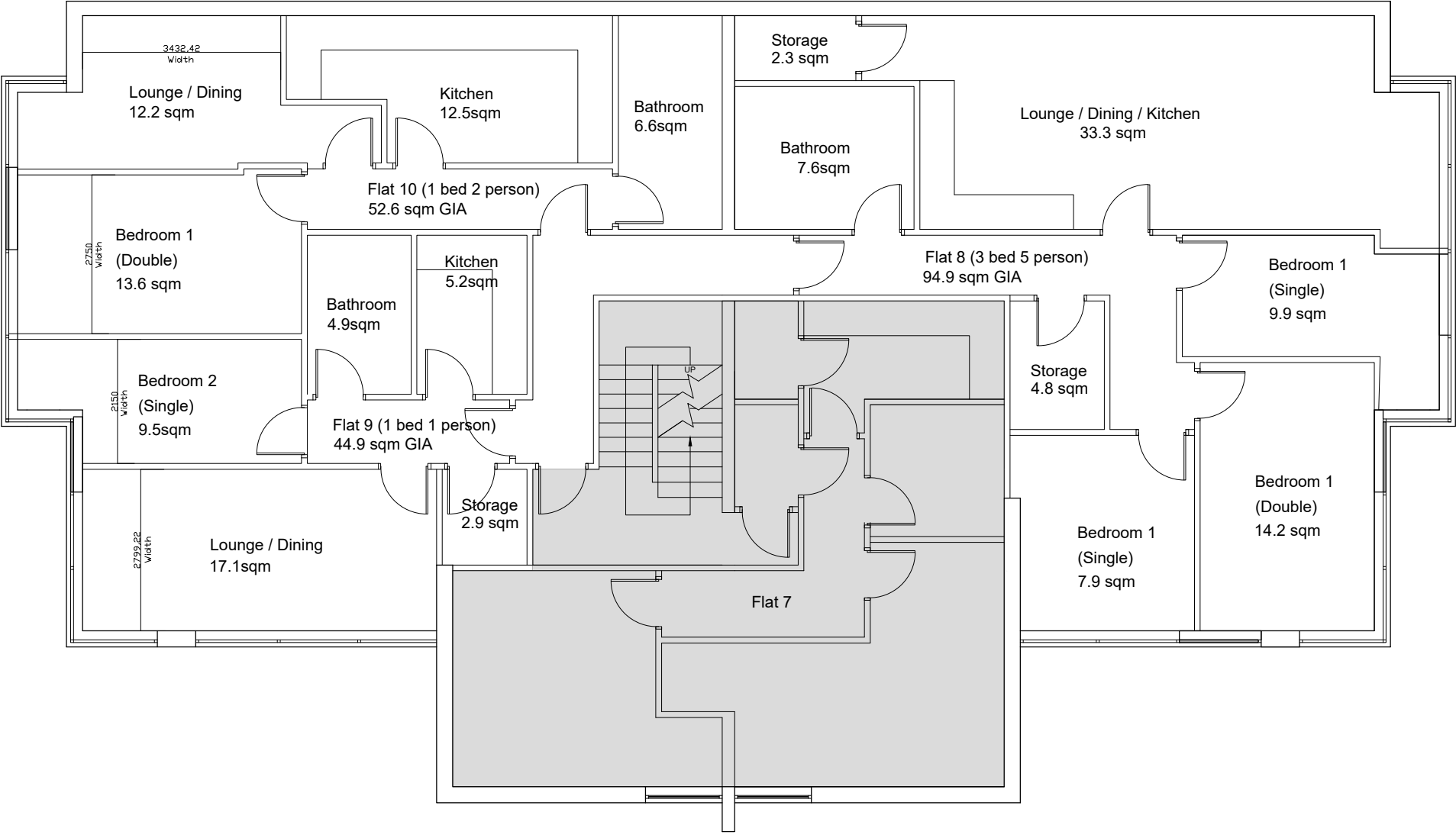


FIRST FLOOR PLAN



AREA OF FLOOR PLAN COVERED UNDER SEPARATE PD APPLICATION
(CONVERSION FROM OFFICE TO 7 NO RESIDENTIAL FLATS)

--	--	--	--
Nr.	Revision	Date	Ch.
Title			
PROPOSED FIRST FLOOR LAYOUT			
Project PERMITTED DEVELOPMENT AT 36 RAILWAY APPROACH, HARROW (VERTICAL EXTENSION – RESIDENTIAL FLATS)			
Client TLC GROUP 36 RAILWAY APPROACH HARROW			
Scale 1:100 @ A3	Drawing Number 13		
Date AUGUST 2025			
Drawn by —	Checked by —	Revision B	



PROPOSED SECOND FLOOR PLAN

Vertical extension to create new floor of Residential Flats

AREA OF FLOOR PLAN COVERED UNDER SEPARATE PD APPLICATION
(CONVERSION FROM OFFICE TO 7 NO RESIDENTIAL FLATS)

DO NOT SCALE FROM THIS DRAWING
All figured dimensions must be accurately checked on site in full

FLATS RELATING TO
VERTICAL EXTENSION
PD APPLICATION

FLAT 8
3 BED 5 PERSON GIA = 94.9 sqm
Living / Kitchen / Dining Space = 33.3 sqm

FLAT 9
1 BED 1 PERSON GIA = 44.9 sqm
Living / Kitchen / Dining Space = 22.3 sqm

FLAT 10
1 BED 2 PERSON GIA = 52.6 sqm
Living / Kitchen / Dining Space = 24.7 sqm

FLAT 11
2 BED 3 PERSON GIA = 65.9 sqm
Living / Kitchen / Dining Space = 25.2 sqm

FLAT 12
2 BED 3 PERSON GIA = 63.8 sqm
Living / Kitchen / Dining Space = 25.1 sqm

FLAT 13
2 BED 3 PERSON GIA = 62.8 sqm
Living / Kitchen / Dining Space = 28.6 sqm

FLAT 14
1 BED 2 PERSON GIA = 57.4 sqm
Living / Kitchen / Dining Space = 24.7 sqm

STUDIO 15
1 BED 2 PERSON GIA = 37.4 sqm
Living / Kitchen / Dining Space = 32.4 sqm

STUDIO 16
1 BED 2 PERSON GIA = 44.3 sqm
Living / Kitchen / Dining Space = 34.2 sqm

—	—	—	—
Nr.	Revision	Date	Ch.

Title

PROPOSED SECOND FLOOR LAYOUT

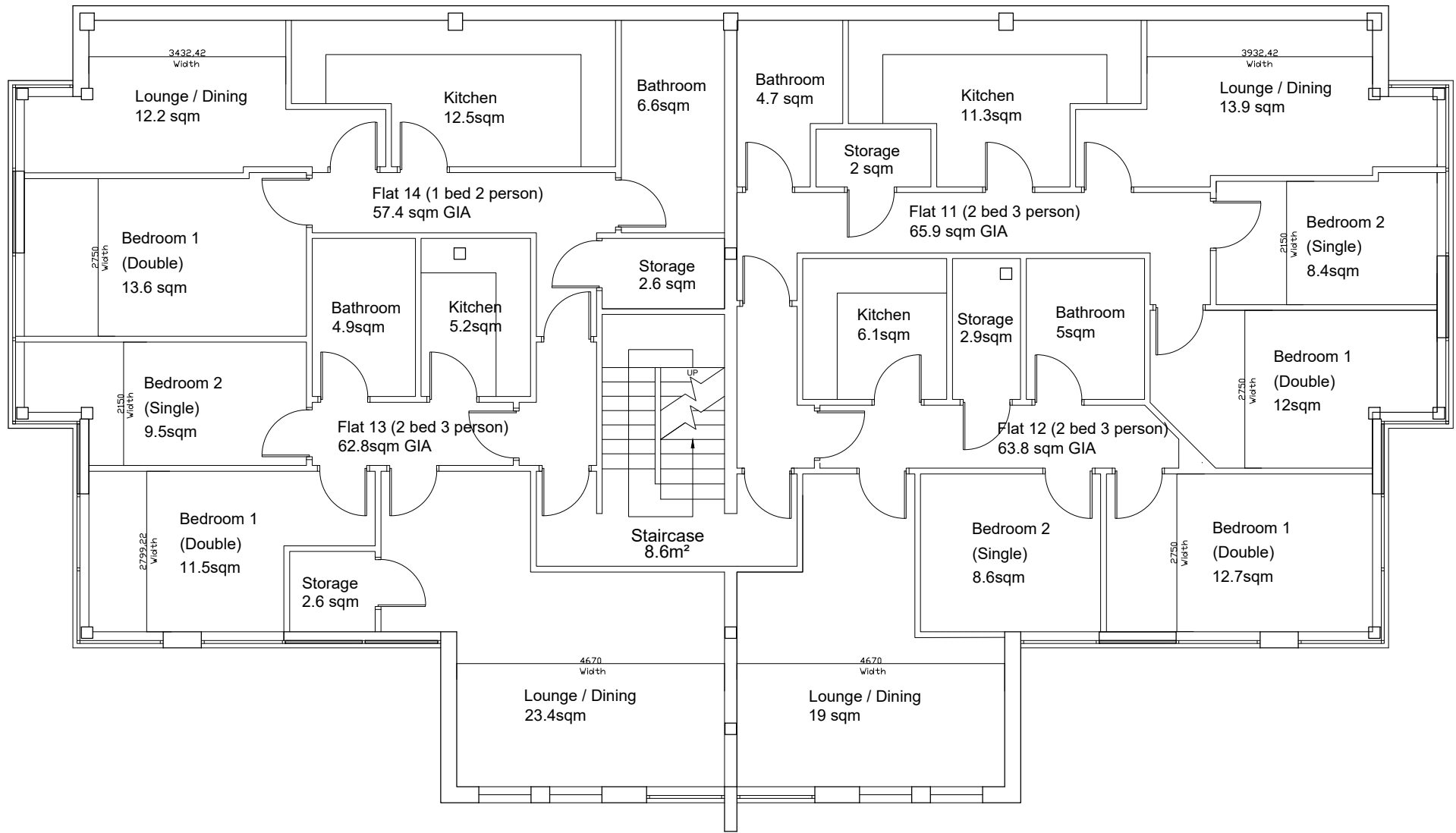
Project

PERMITTED DEVELOPMENT AT 36
RAILWAY APPROACH, HARROW
(VERTICAL EXTENSION – RESIDENTIAL
FLATS)

Client

TLC GROUP
36 RAILWAY APPROACH
HARROW

Scale 1:100 @ A3	Drawing Number 14	
Date AUGUST 2025		
Drawn by —	Checked by —	Revision B



PROPOSED THIRD FLOOR PLAN

Vertical extension to create new floor of Residential Flats

DO NOT SCALE FROM THIS DRAWING
All figured dimensions must be accurately checked on site in full

FLATS RELATING TO
VERTICAL EXTENSION
PD APPLICATION

FLAT 8
3 BED 5 PERSON GIA = 94.9 sqm
Living / Kitchen / Dining Space = 33.3 sqm

FLAT 9
1 BED 1 PERSON GIA = 44.9 sqm
Living / Kitchen / Dining Space = 22.3 sqm

FLAT 10
1 BED 2 PERSON GIA = 52.6 sqm
Living / Kitchen / Dining Space = 24.7 sqm

FLAT 11
2 BED 3 PERSON GIA = 65.9 sqm
Living / Kitchen / Dining Space = 25.2 sqm

FLAT 12
2 BED 3 PERSON GIA = 63.8 sqm
Living / Kitchen / Dining Space = 25.1 sqm

FLAT 13
2 BED 3 PERSON GIA = 62.8 sqm
Living / Kitchen / Dining Space = 28.6 sqm

FLAT 14
1 BED 2 PERSON GIA = 57.4 sqm
Living / Kitchen / Dining Space = 24.7 sqm

STUDIO 15
1 BED 2 PERSON GIA = 37.4 sqm
Living / Kitchen / Dining Space = 32.4 sqm

STUDIO 16
1 BED 2 PERSON GIA = 44.3 sqm
Living / Kitchen / Dining Space = 34.2 sqm

—	—	—	—
Nr.	Revision	Date	Ch.

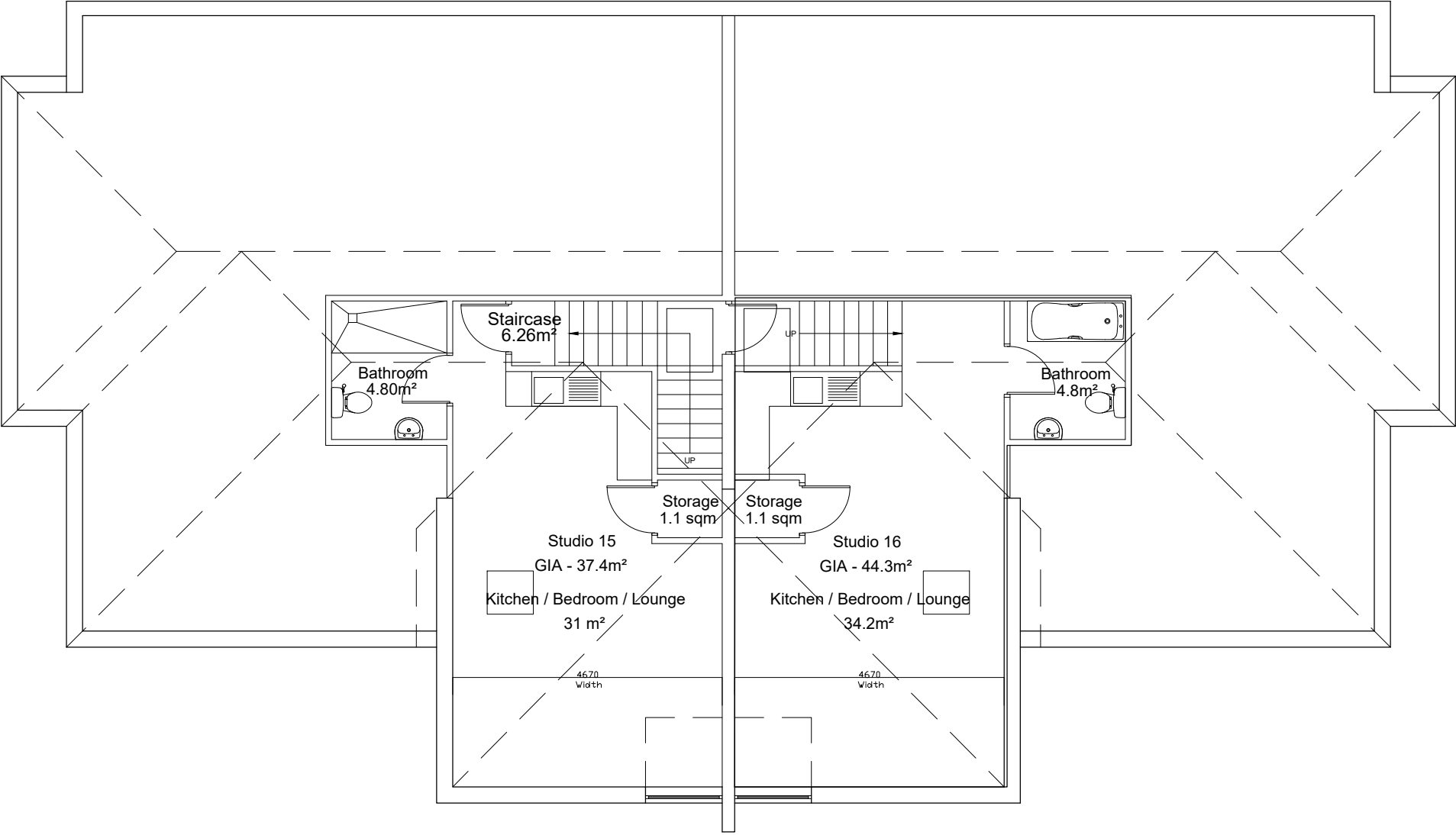
Title

PROPOSED THIRD FLOOR LAYOUT

Project
PERMITTED DEVELOPMENT AT 36
RAILWAY APPROACH, HARROW
(VERTICAL EXTENSION – RESIDENTIAL
FLATS)

Client
TLC GROUP
36 RAILWAY APPROACH
HARROW

Scale 1:100 @ A3	15	
Date AUGUST 2025		
Drawn by —	Checked by —	Revision B



PROPOSED FOURTH FLOOR PLAN

Vertical extension to create new floor of Residential Flats

DO NOT SCALE FROM THIS DRAWING
All figured dimensions must be accurately checked on site in full

FLATS RELATING TO
VERTICAL EXTENSION
PD APPLICATION

FLAT 8
3 BED 5 PERSON GIA = 94.9 sqm
Living / Kitchen / Dining Space = 33.3 sqm

FLAT 9
1 BED 1 PERSON GIA = 44.9 sqm
Living / Kitchen / Dining Space = 22.3 sqm

FLAT 10
1 BED 2 PERSON GIA = 52.6 sqm
Living / Kitchen / Dining Space = 24.7 sqm

FLAT 11
2 BED 3 PERSON GIA = 65.9 sqm
Living / Kitchen / Dining Space = 25.2 sqm

FLAT 12
2 BED 3 PERSON GIA = 63.8 sqm
Living / Kitchen / Dining Space = 25.1 sqm

FLAT 13
2 BED 3 PERSON GIA = 62.8 sqm
Living / Kitchen / Dining Space = 28.6 sqm

FLAT 14
1 BED 2 PERSON GIA = 57.4 sqm
Living / Kitchen / Dining Space = 24.7 sqm

STUDIO 15
1 BED 2 PERSON GIA = 37.4 sqm
Living / Kitchen / Dining Space = 32.4 sqm

STUDIO 16
1 BED 2 PERSON GIA = 44.3 sqm
Living / Kitchen / Dining Space = 34.2 sqm

—	—	—	—
Nr.	Revision	Date	Ch.

Title

PROPOSED FOURTH FLOOR LAYOUT

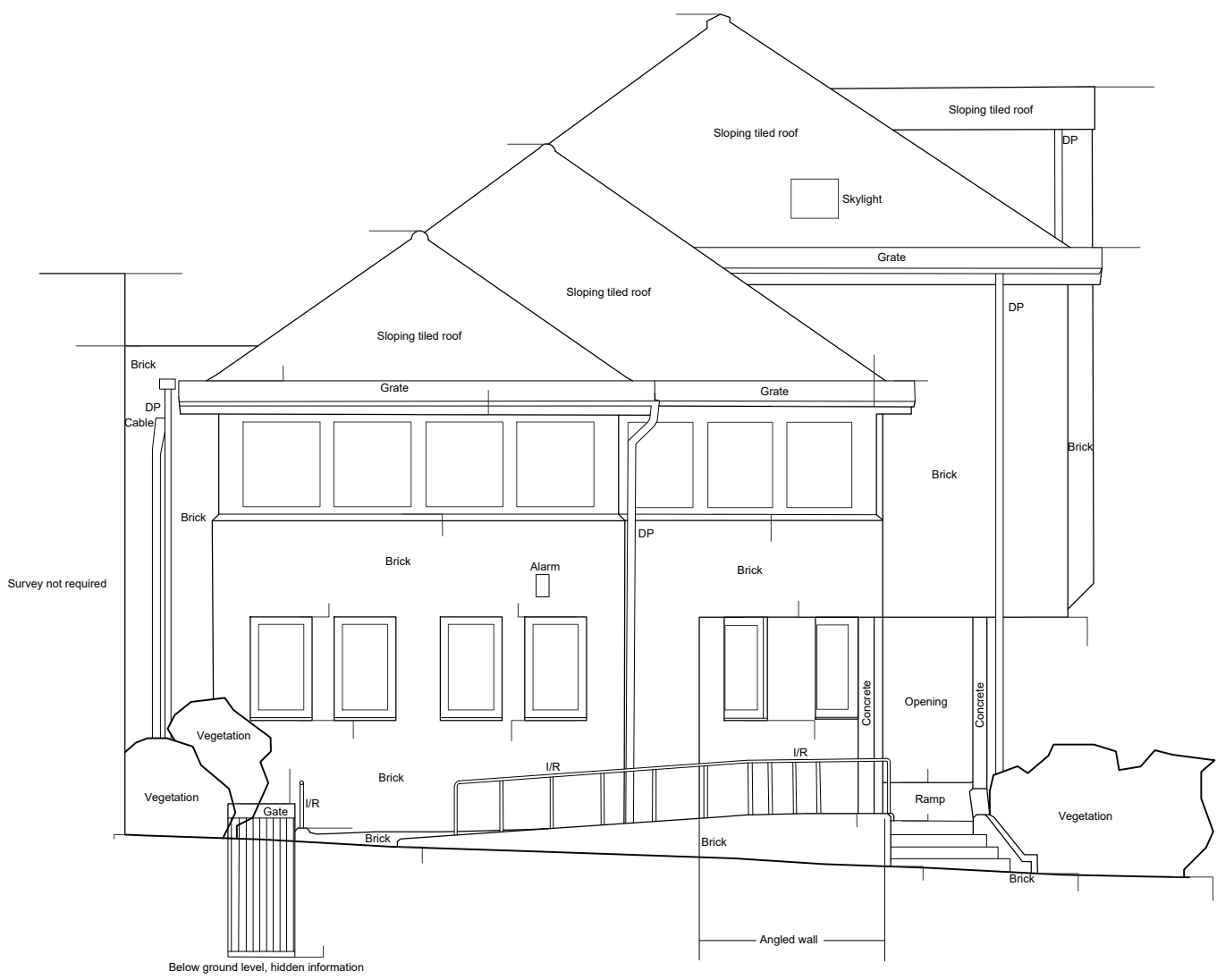
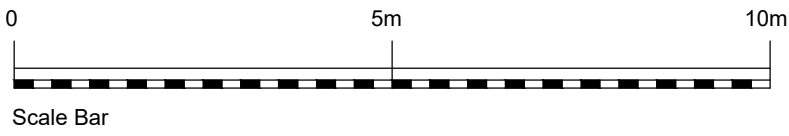
Project

PERMITTED DEVELOPMENT AT 36
RAILWAY APPROACH, HARROW
(VERTICAL EXTENSION – RESIDENTIAL
FLATS)

Client

TLC GROUP
36 RAILWAY APPROACH
HARROW

Scale 1:100 @ A3	16	
Date AUGUST 2025		
Drawn by —	Checked by —	Revision B

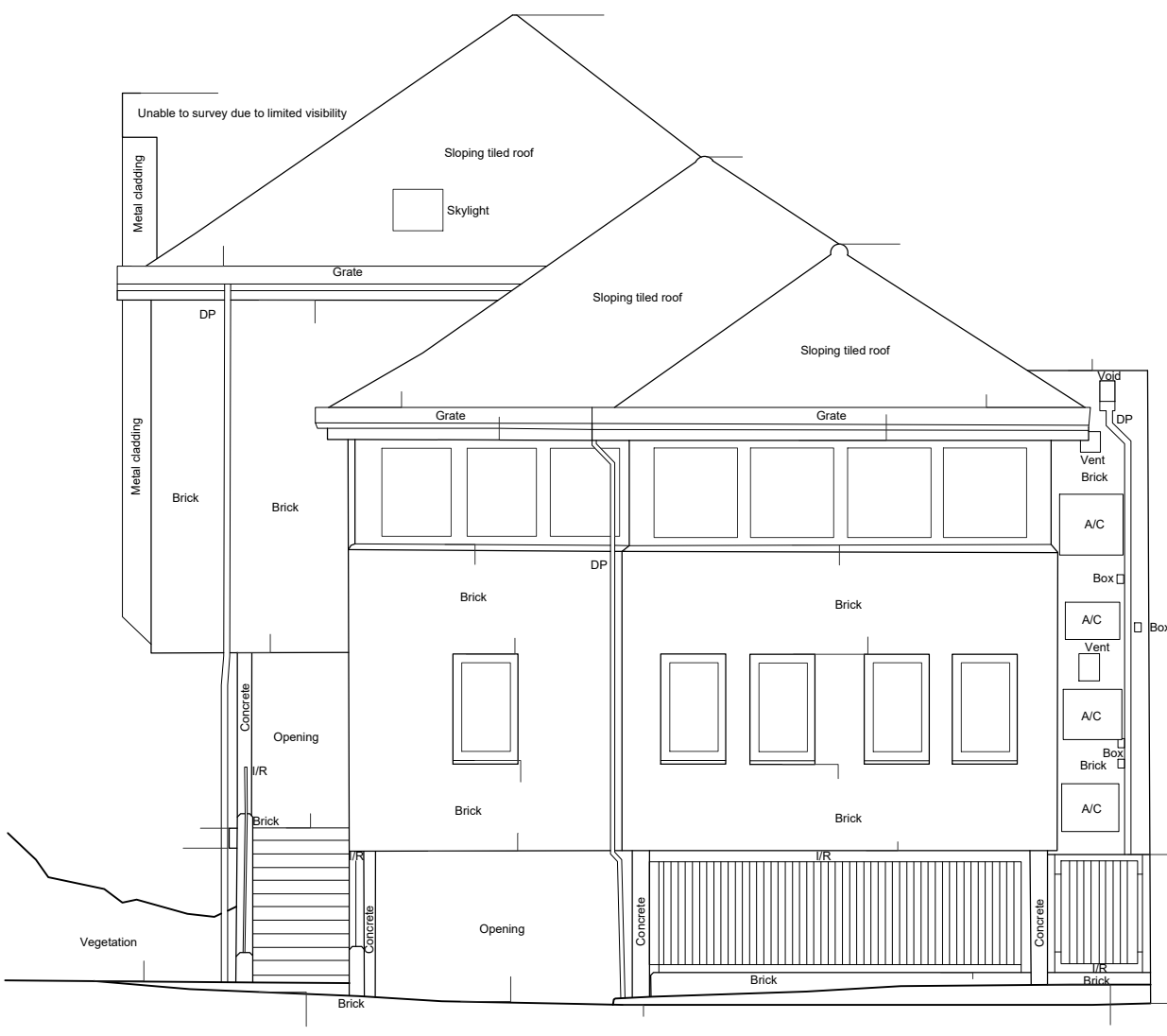


Existing Elevation 1

Datum 50.00m A.O.D



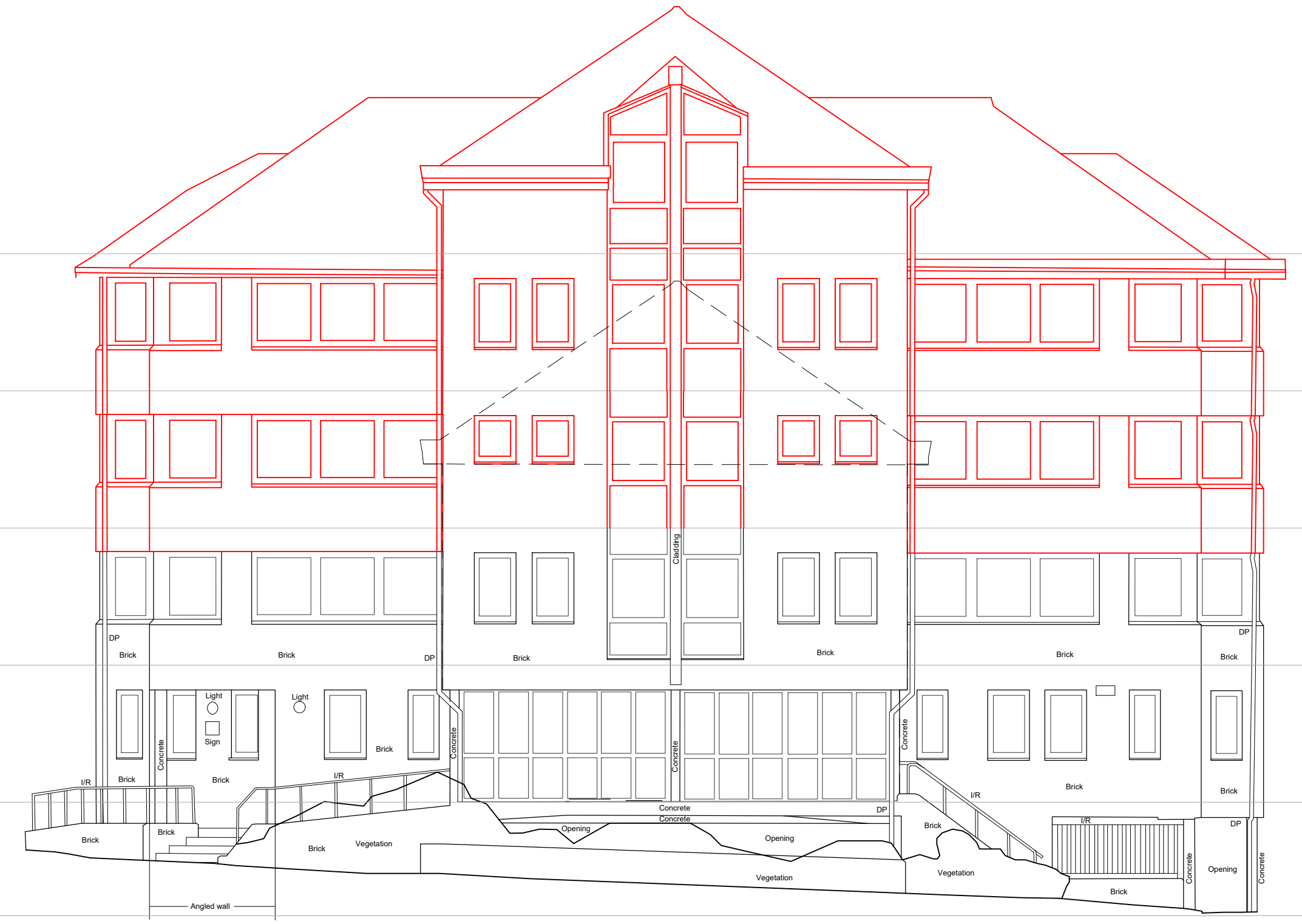
Existing Elevation 2



Existing Elevation 3



Proposed Elevation 1



Proposed Elevation 2



Proposed Elevation 3

DO NOT SCALE FROM THIS DRAWING
All figured dimensions must be accurately checked on site in full

—	—	—	—
Nr.	Revision	Date	Ch.
Title			
EXISTING AND PROPOSED ELEVATIONS			
Project PERMITTED DEVELOPMENT AT 36 RAILWAY APPROACH, HARROW (VERTICAL EXTENSION – RESIDENTIAL FLATS)			
Client TLC GROUP 36 RAILWAY APPROACH HARROW			
Scale 1:100 @ A1	Drawing Number 17		
Date AUGUST 2025			
Drawn by —	Checked by —	Revision —	