



**RENT**  
**From £25 To £155**  
(per month)



**SERVICE CHARGE**  
**£Inclusive**



**RATES PAYABLE**  
**£Inclusive**



**EPC RATING**  
**TBC**



**Digital World Centre, 1 Lowry Plaza, The Quays,  
Salford, M50 3UB**

Serviced Office | Leasehold | Co-working & Private Office Space



**TO LET**



## Location

Make a home for your business with Regus private office space in Salford. Our serviced offices have everything taken care of - from the furniture to the high-speed WiFi - and with flexible terms allowing you to rent office space from an hour to years, you can focus on driving your business forward.

Put your business in prime position for exploring the markets of the region at our Digital World Centre offices in Salford. The building, next to Media City, home of the BBC, is on Manchester Docks, which were transformed by a major urban regeneration project.



## Description

The building has large windows offering inspiring views, meeting rooms, conference facilities, a 100-seat auditorium and exhibition space, a terrace and secure parking. When you need a break, there's a host of restaurants, bars and shops to explore nearby.



## Accommodation

- Private Offices
- Co-working Desks
- Meeting rooms



## Amenities



Reception



Fitted Out



Plug & Play



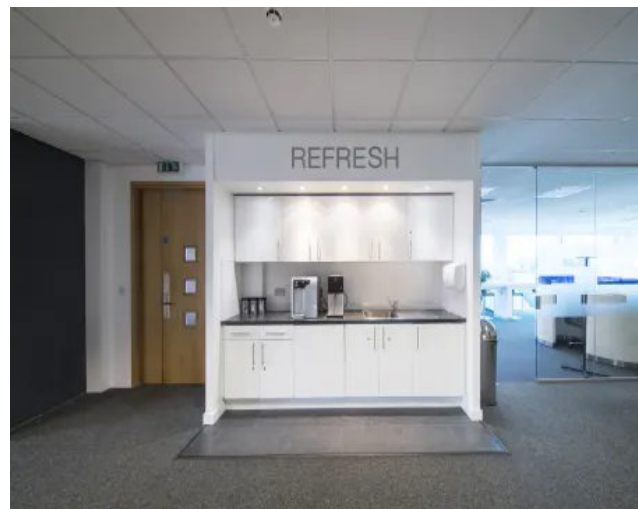
Secure Parking



24/7 Access

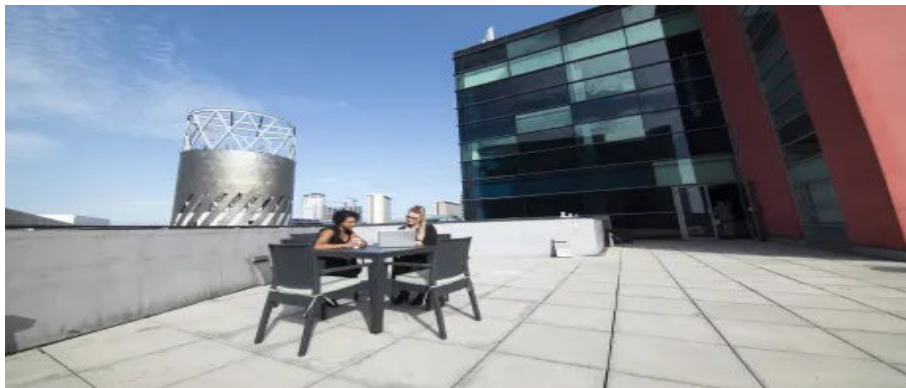


Prestigious Entrance





## Further information



### Lease Terms / Rent

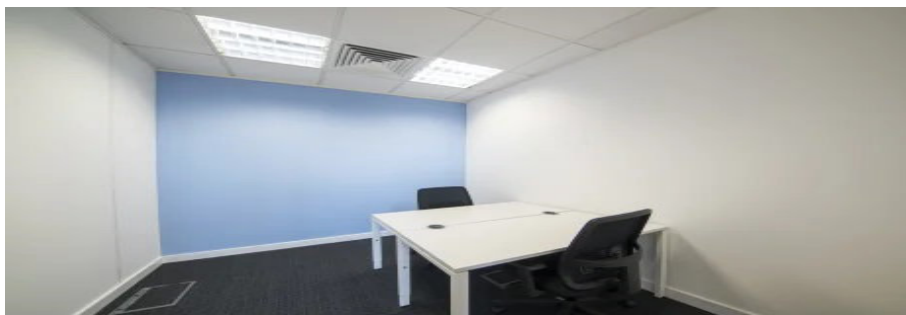
- Office Space From £155 per person per month.
- Co-working From £149 per person per month
- Virtual Offices From £89 per month
- Meeting Rooms From £25 per hour.

### Tenure

Leasehold.

### Services

We confirm we have not tested any of the service installations and any occupiers must satisfy themselves as to the state and condition of such items.



### Legal Costs

Each party to be responsible for their own legal costs incurred in this transaction.

### Anti Money Laundering

The successful tenant will be required to submit information to comply with Anti Money Laundering Regulations.

### VAT

Unless otherwise stated, all prices and rents quoted are exclusive of Value Added Tax (VAT). Any intending tenant should satisfy themselves independently as to VAT in respect of this transaction.





# Digital World Centre, Salford



GoogleMaps ©



## Approximate Travel Distances



### Locations

- Manchester Town Hall - 3 miles
- Deansgate - 6 minutes
- Market Street - 4 minutes



### Nearest Station

- Deansgate - 3 minute walk



### Nearest Airport

- Manchester Airport - 20 minute drive



## Viewings



### Steve Brittle



0161 214 4665



07787 152 996



Steve.brittle@fishergerman.co.uk



### Marcus Baumber



0161 214 4694



07884 413 532



Marcus.baumber@fishergerman.co.uk

**fishergerman.co.uk**



**Please Note:** Fisher German LLP and its Joint Agents give notice that: 1. They have no authority to make or give any representation or warranty on any property whether on their own behalf or on behalf of their clients or otherwise. 2. They do not owe any duty of care to you and assume no responsibility for any statements, representations, warranties or otherwise made in the particulars and you should not rely on those in the particulars. 3. The particulars are produced in good faith are set out as a general guide only and do not constitute or form an offer or a contract or part thereof. 4. Any photographs, descriptions, plans, measurements, distances and any other details in the particulars are approximate estimates only taken as the property appeared at the time and should not be relied upon as factually accurate. 5. Fisher German assumes prospective purchasers/tenants have carried out inspections to satisfy themselves that the information in the particulars is correct.

Particulars dated July 2023. Photographs dated March 2023.