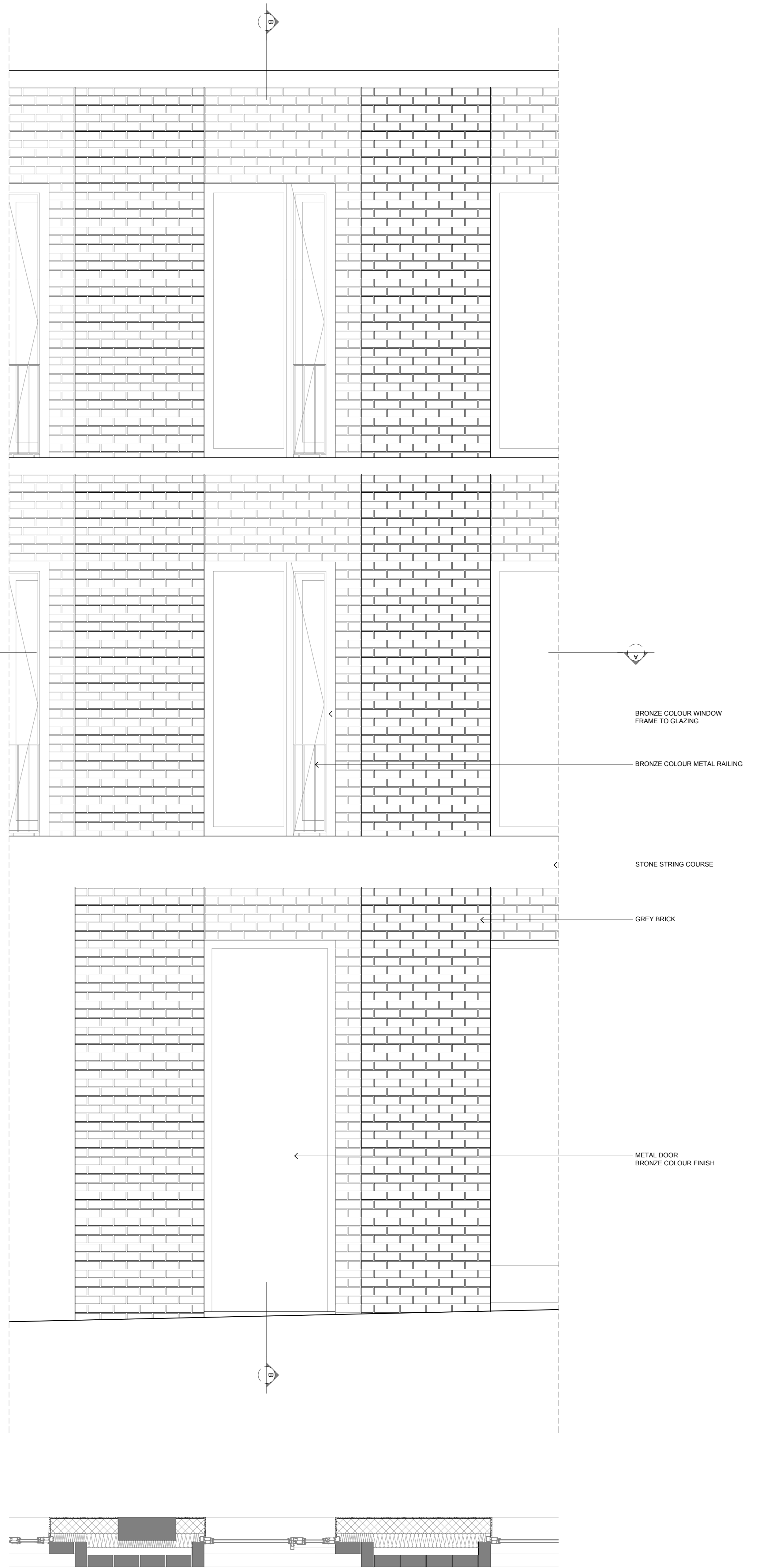
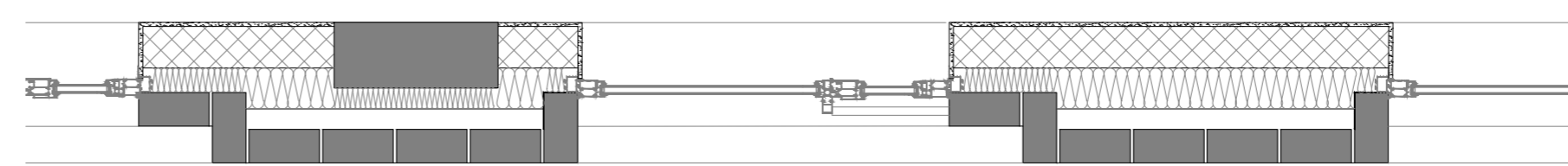


DETAIL B



DETAIL A



Status	Description	date	drawn by	checked by
-	FOR INFORMATION	31/08/2017	ES	MS

"copyright and ownership of this drawing is vested in paul murphy architects whose prior written consent is required for its use, reproduction or for publication to any third party. all rights reserved by the law of copyright and by international copyright conventions are reserved to paul murphy architects and may be protected by court proceedings for damages and/or injunctions and costs."

do not scale this drawing
all written dimensions are in millimetres
any inconsistencies to be reported to the architect immediately

© paul murphy architects 2007

PaulMurphyArchitects

The Foundry
7 Glenthorne Mews
London W6 0LJ

client HAND & FLOWER PROPERTIES LTD
project HAND & FLOWER

T 020 8846 2520
F 020 8846 2521

drawing 1:20 WALL DETAILS

stage 3

scale 1:20 @A1

info@paulmurphyarchitects.co.uk
www.paulmurphyarchitects.co.uk

no 1702 PL(21) 01

rev -