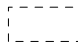
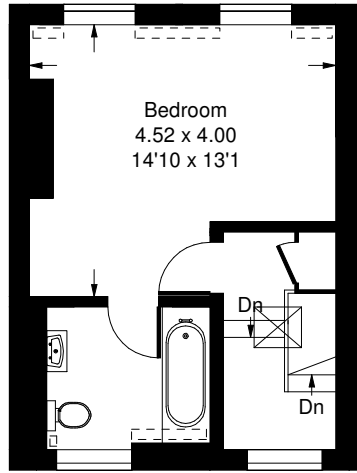
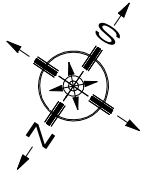


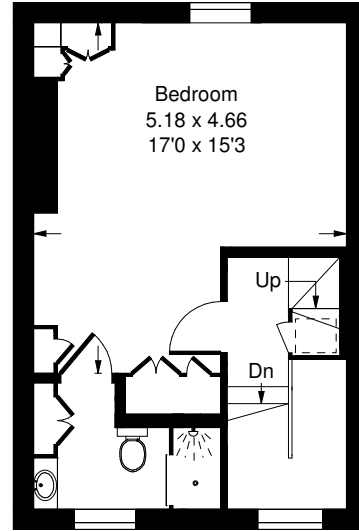
Kings Road, SW6

Approx. Gross Internal Area
 190.3 sq m / 2048 sq ft
 Mezzanine = 2.8 sq m / 30 sq ft
 Total = 193.1 sq m / 2078 sq ft

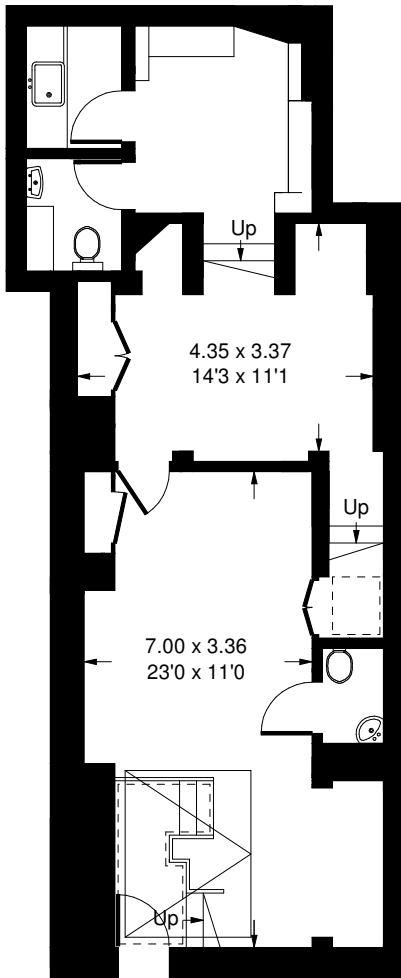
 = Reduced headroom below 1.5 m / 5'0"



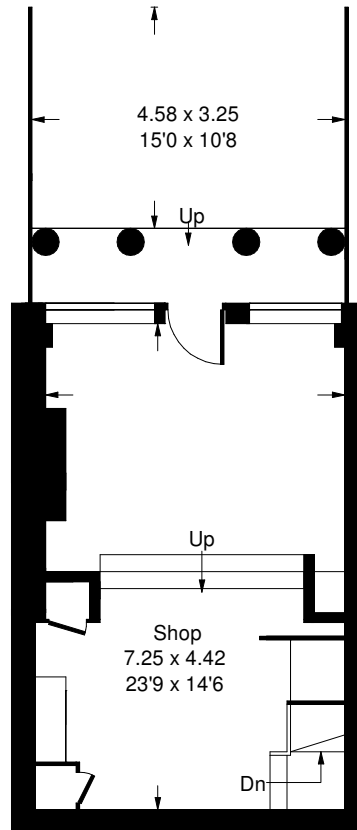
Third Floor



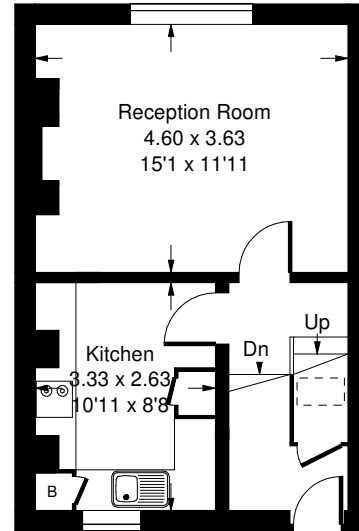
Second Floor



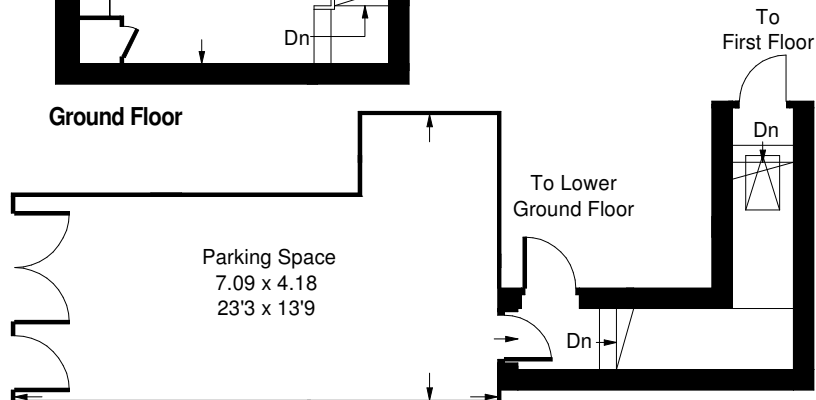
Lower Ground Floor



Ground Floor



First Floor



Ground Floor



Mezzanine

Whilst every attempt has been made to ensure the accuracy of the floor plan, measurements are approximate and not to scale. No guarantee is given on the total square footage of the property quoted on the plan. Figures given are for guidance. Plan is for illustration purposes only, not to be used for valuations.