

45 WATERLOO ST.

Glasgow \* G2

45

WATERLOO

BUILDING  
SPECIFICATION &  
FLOOR / SPACE PLANS

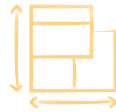
ST.

[45WATERLOO.COM](http://45WATERLOO.COM)

# BUILDING *Specification.*



EPC 'A' and BREEAM rating 'Excellent'



95,890 sq ft of Grade A Space with typical floor plates of 15,177 sq ft



Revitalised Ground Floor Amenity Offering incl. Grab & Go café



110 Bike and 8 Scooter spaces, with onsite Car Parking



1,744 sq ft communal Roof Terrace and Lounge

## \* ENTRANCE / RECEPTION

- New feature entrance
- Triple height atrium
- High quality decorative finishes and wall panelling
- Solid and durable floor finishes
- Feature lighting
- Feature 2-person reception point with concierge staff
- Security barriers between the reception and the lift lobby
- CCTV will cover common areas

## \* OFFICE & OCCUPANCY

- Highly flexible open plan floor plates
- Floor to ceiling: Typical 2.7m
- Plan Efficiency: 80% on Levels 01-02 and 83%/84% on Levels 03-06
- M&E: design for occupancy of 1 person per 10 m<sup>2</sup> in accordance with BCO 2023
- WCs: 1 person per 6m<sup>2</sup> (NIA)
- Means of escape: 1 person per 6m<sup>2</sup> (NIA)
- Workplace density: 1 person per 10m<sup>2</sup>(NIA)

## \* SUSTAINABILITY & ACCREDITATIONS

- Comprehensive refurbishment and full decarbonisation strategy
- Eliminate fossil fuel reliance – removing all gas-fired equipment
- Reduce delivered energy and carbon emissions by over 12% through fabric-first and passive design measures
- Integration of renewable technologies including air source heat pumps and photovoltaic panels
- Deliver a 62% reduction in regulated CO<sub>2</sub> emissions, reinforcing alignment with Net Zero objectives
- EPC 'A'
- BREEAM 'Excellent'

## \* TENANT AMENITIES

- New high quality occupier amenity and wellness facilities at basement, ground and roof level
- Ground floor communal social space and business lounge
- Grab & Go café
- Meeting rooms for Tenant use – 1 large and 1 small/podcast facility
- Flexible space for Tenant events/Townhall functions
- 110 cycle spaces and 8 scooter spaces provided in a secure store within the basement
- Drying room within cycle store providing 13 mesh drying lockers
- Cycle maintenance station
- Direct stair access to ground floor wellness facilities
- High quality male, female and accessible changing facilities at ground floor providing a total of 11 showers
- Towel stations, vanity areas and ironing points
- 102 lockers with integrated benches & shoe storage

## \* TENANT AMENITIES CONT.

- Secondary secure access providing a direct link to the wellness facilities
- 2 no. multi-use wellness rooms
- Rooftop informal lounge with direct access to the external roof terrace
- WiFi throughout the landlord areas
- Dedicated tenant risers
- 30 car parking spaces



45 WATERLOO ST.

Roof

732 sq ft

Including:  
 Lounge Area 732 sq ft  
 Rooftop Terrace 1,744 sq ft

Sixth

13,380 sq ft

Fifth

13,347 sq ft

Fourth

15,123 sq ft

Third

15,177 sq ft

Second

13,659 sq ft

First

13,616 sq ft

Ground

6,803 sq ft

Including:  
 East Office Suite 6,803 sq ft  
 West Business Lounge 2,400 sq ft  
 Reception 980 sq ft  
 Onsite Gym 431 sq ft  
 Wellness Room 242 sq ft

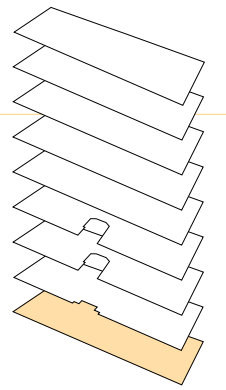
Basement

TOTAL

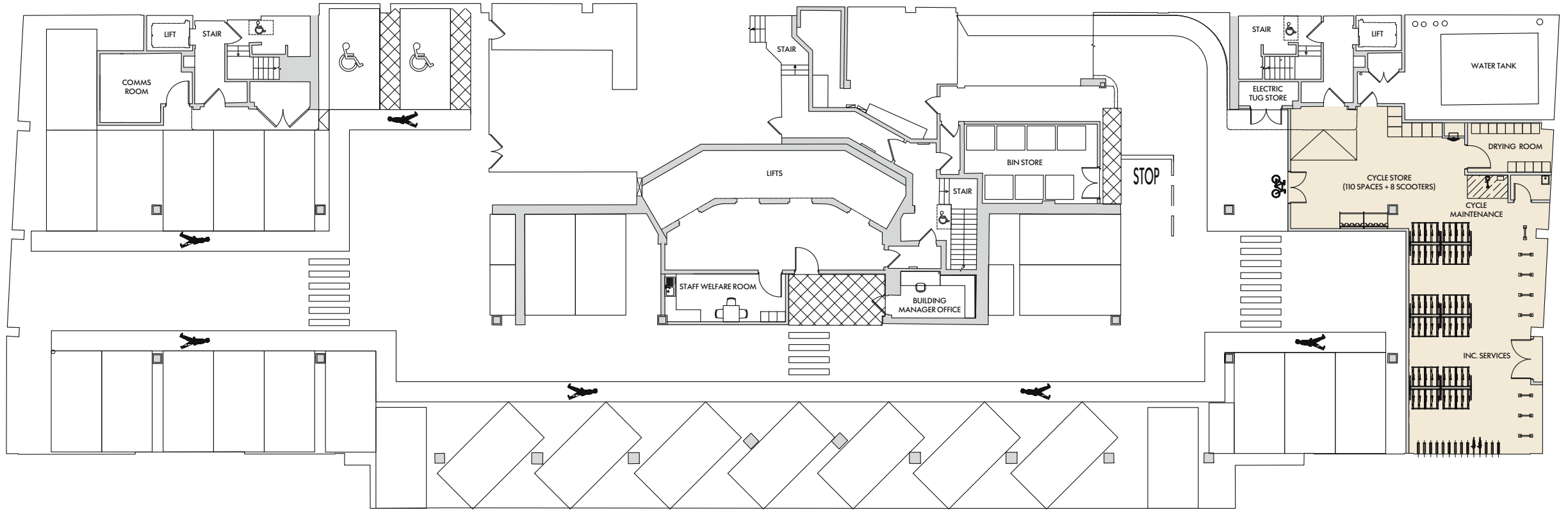
95,890 sq ft

\*





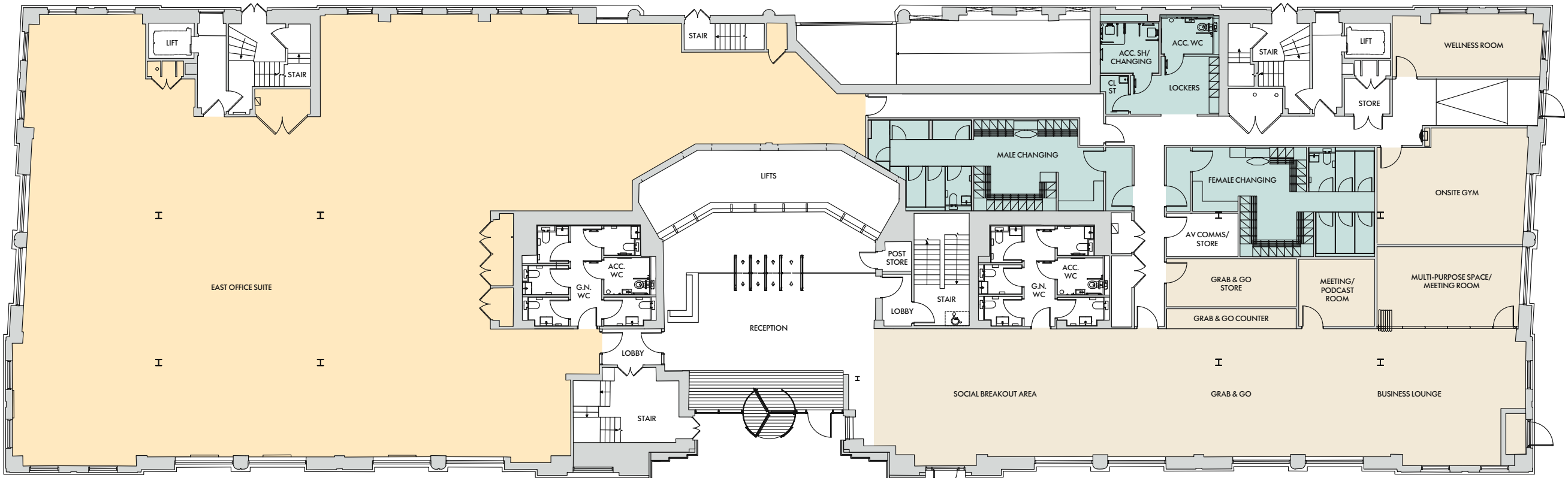
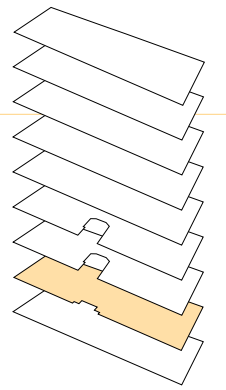
# Basement \* 110 Bike, 28 Car, 8 Scooter & 2 Acc. Spaces



WATERLOO ST.



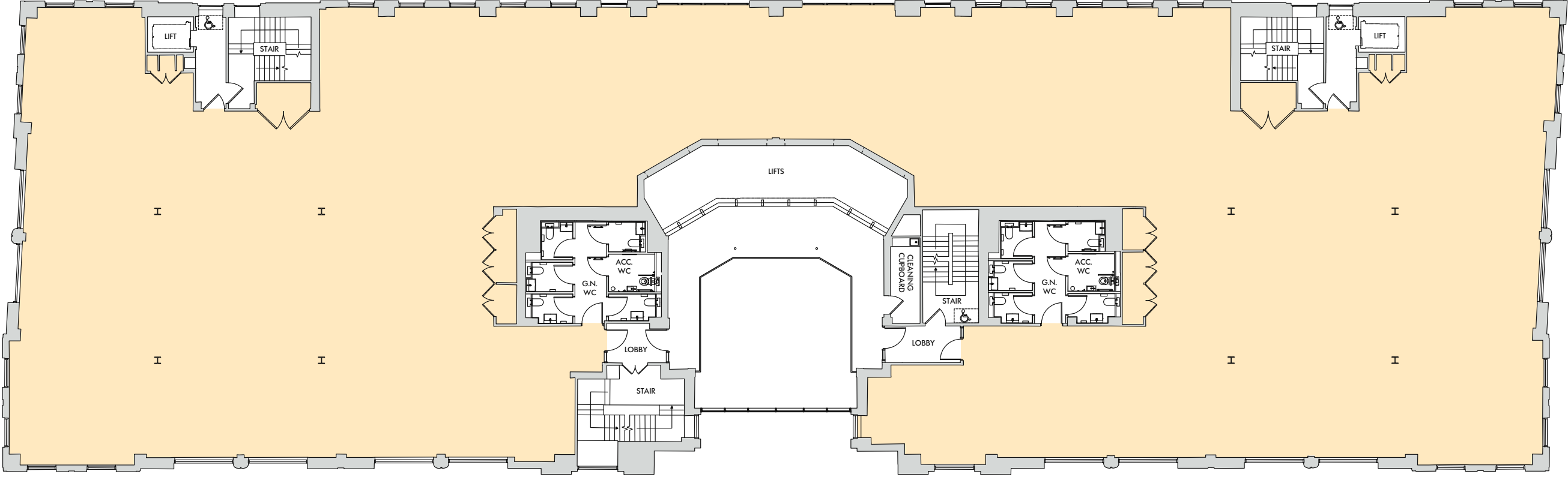
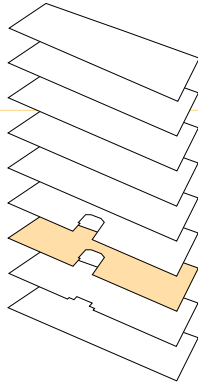
# Ground Floor \* 6,803 sq ft



WATERLOO ST.



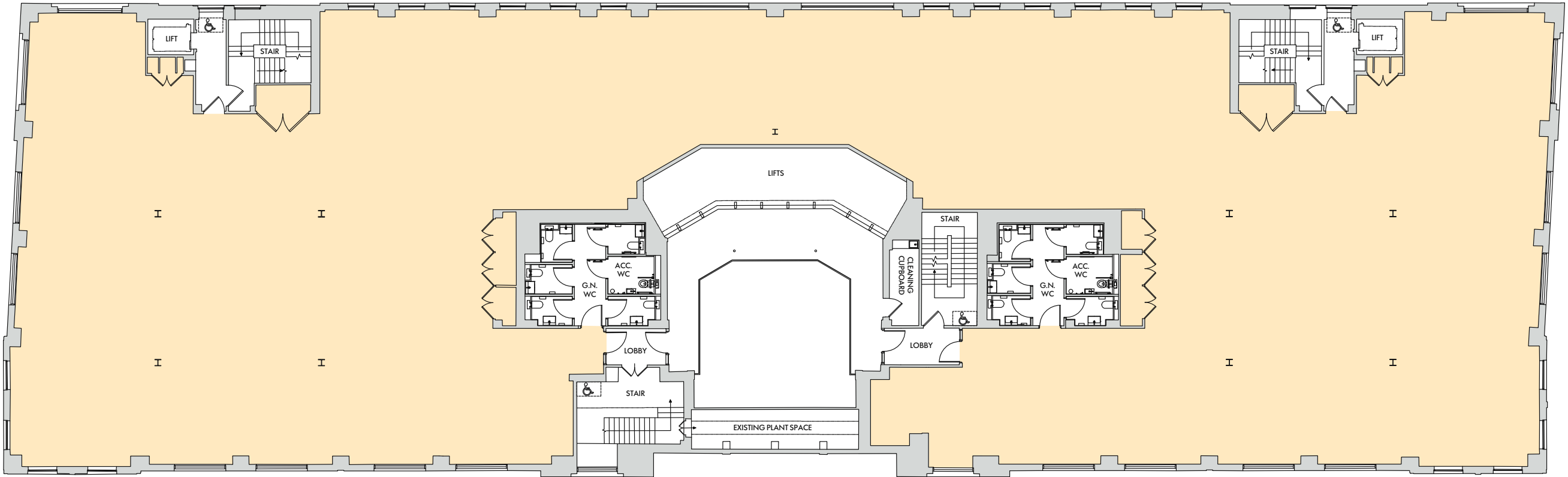
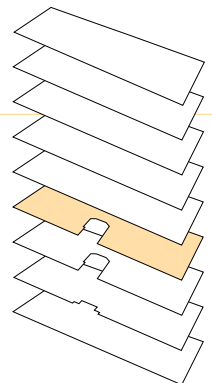
# First Floor \* 13,616 sq ft



WATERLOO ST.

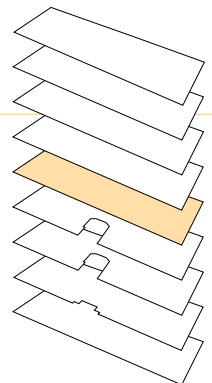


# Second Floor \* 13,659 sq ft

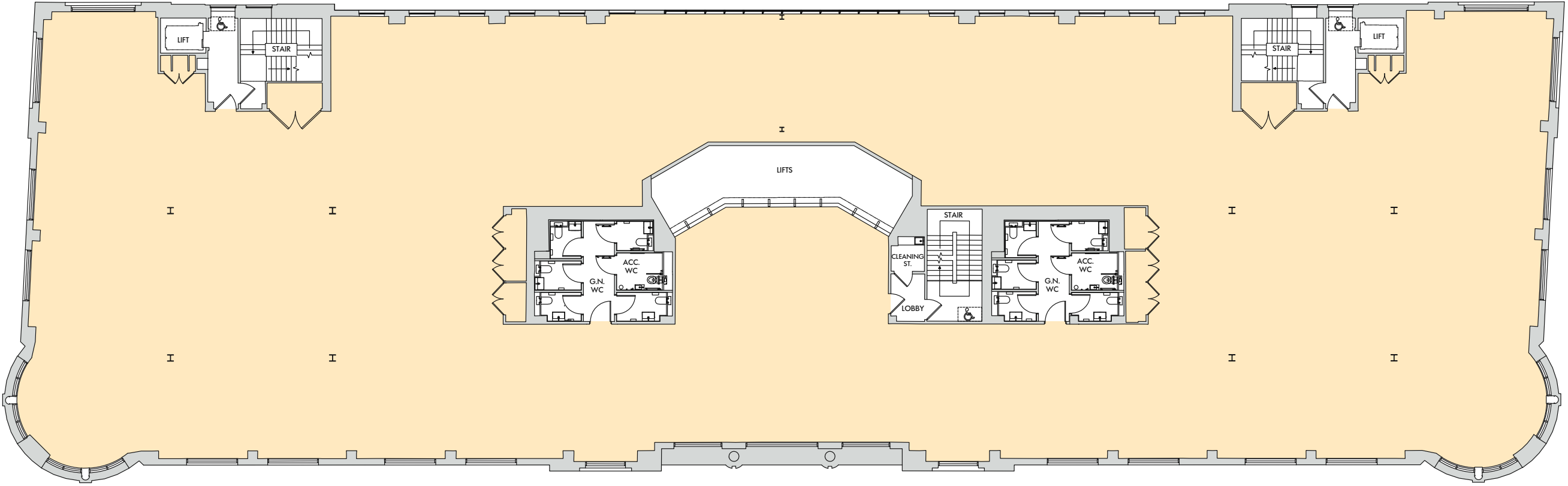


WATERLOO ST.



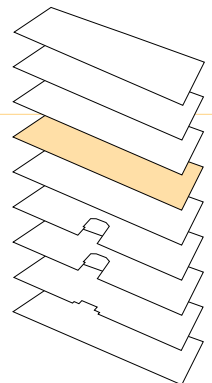


# Third Floor \* 15,177 sq ft

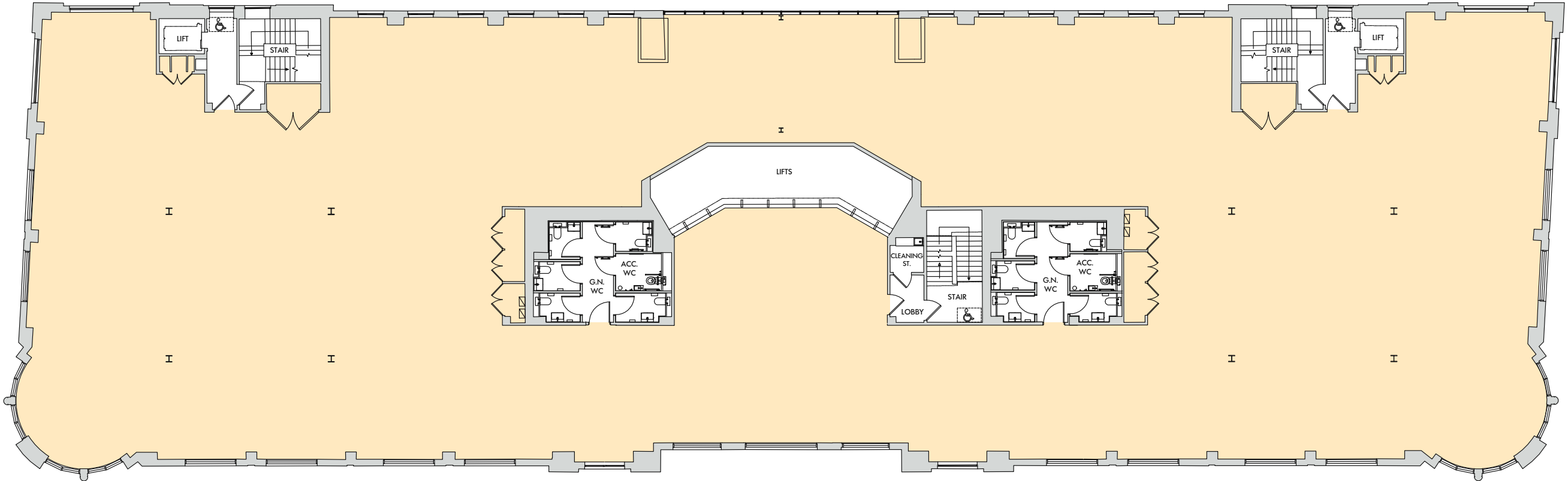


WATERLOO ST.





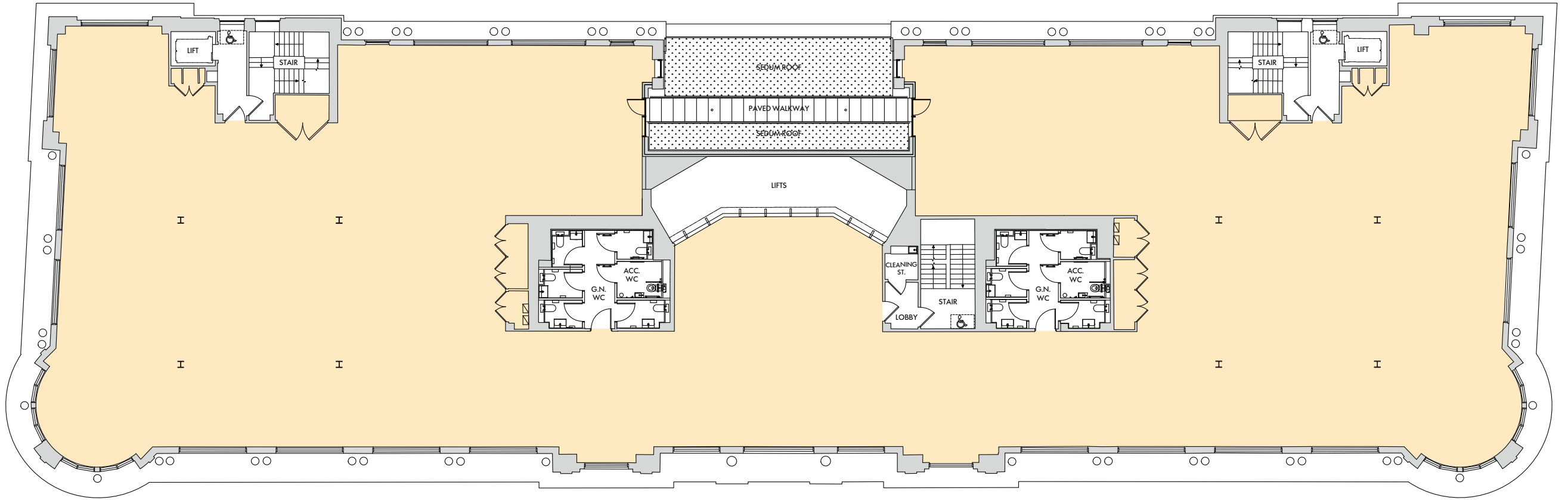
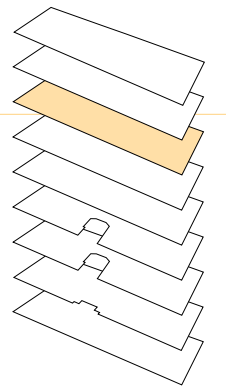
# Fourth Floor \* 15,123 sq ft



WATERLOO ST.

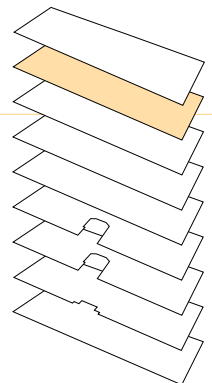


# Fifth Floor \* 13,347 sq ft

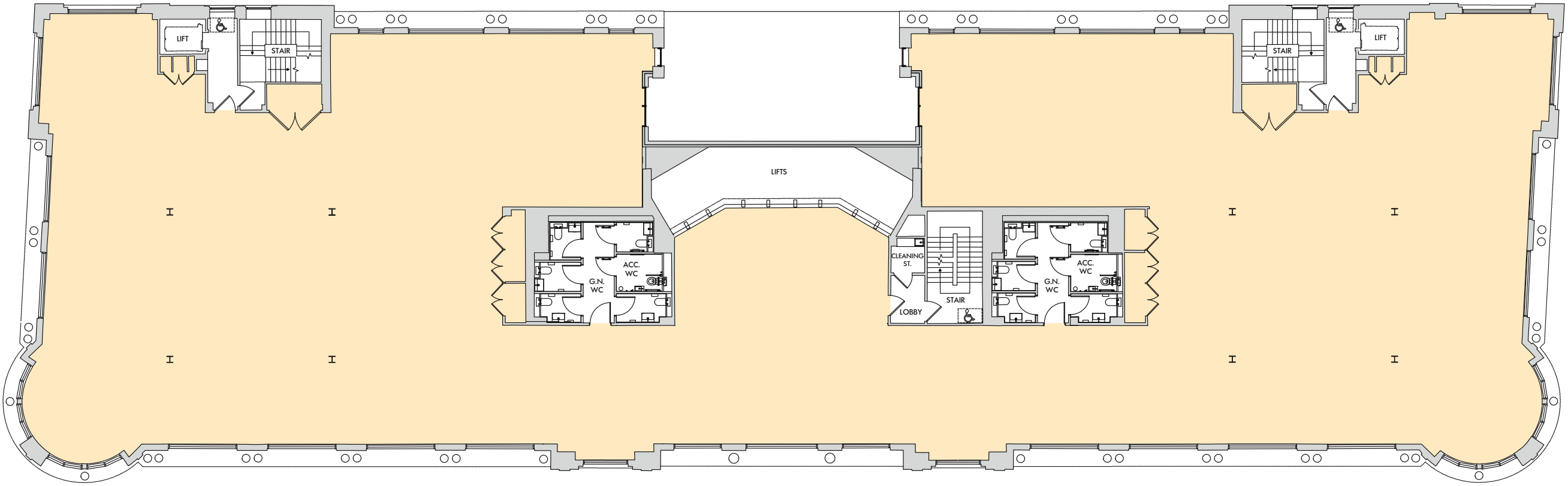


WATERLOO ST.





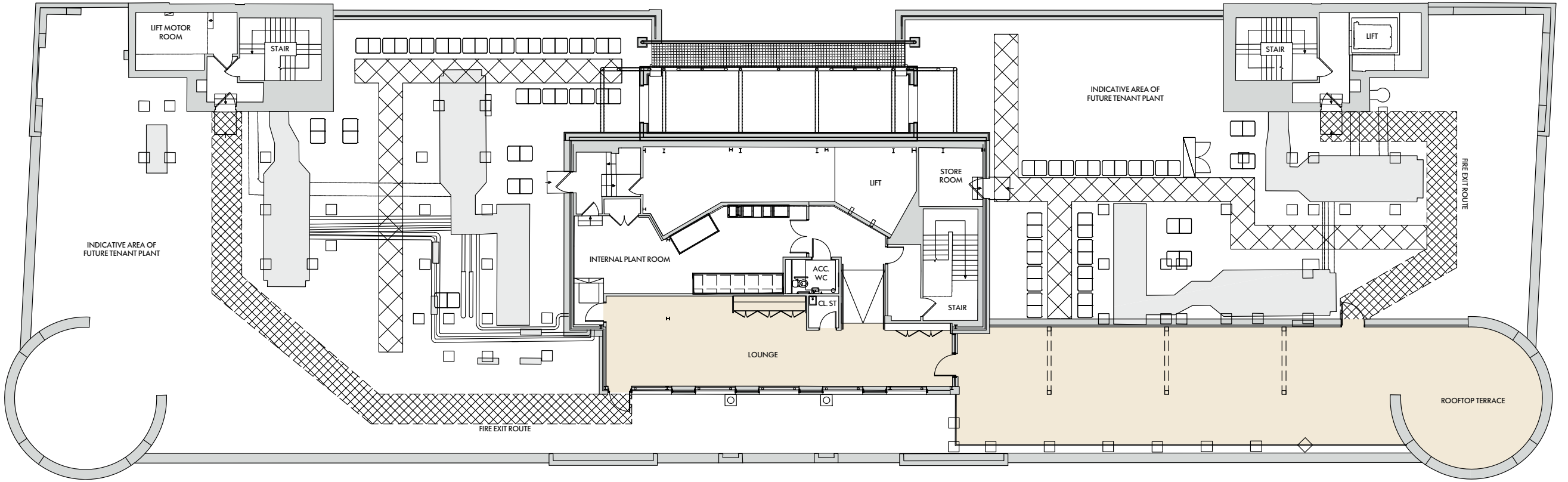
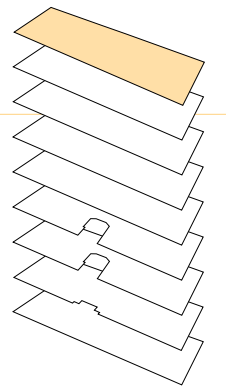
# Sixth Floor \* 13,380 sq ft



WATERLOO ST.



# Roof Level \* 732 sq ft

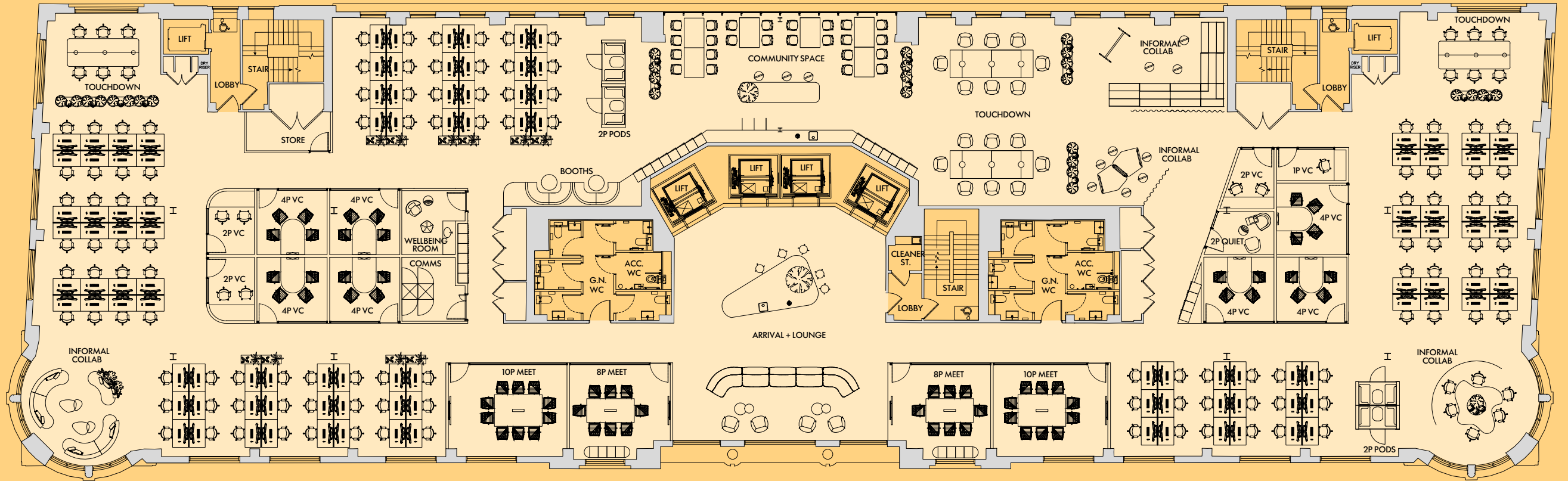


WATERLOO ST.



# Third Floor \* 15,177 sq ft

Typical Floor for Single Occupier



WATERLOO ST.

This option demonstrates a layout for a single occupier with a variety of work settings.

## STANDARD WORKING

114 Workstations  
Maximum Occupancy: 1:6 – 235 people

## SUPPORT FACILITIES

2 x 10 person meeting room  
2 x 8 person meeting room  
7 x 4 person VC room  
5 x Informal collab area  
1 x Arrival & tea-point  
4 x Touchdown table

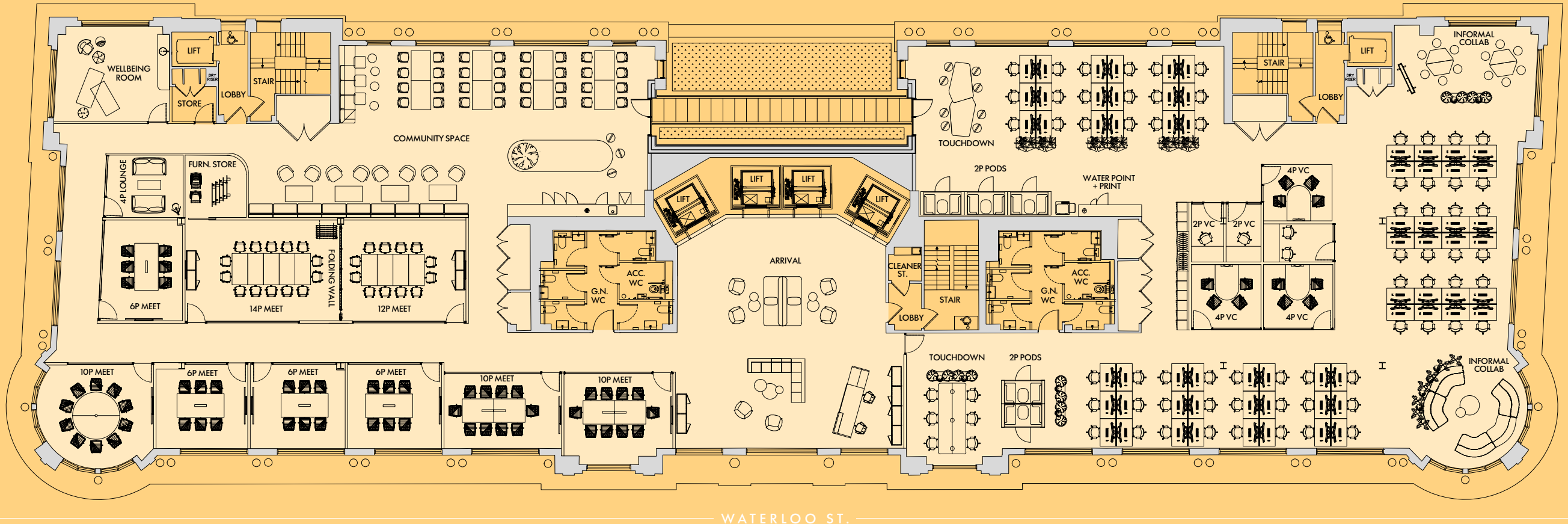
1 x Community space with flexible seating (incl. informal meeting & working space)  
4 x 2-4 person pod  
4 x 1-2 person VC room  
1 x Quiet room

1 x Store  
1 x Comms room  
1 x Wellbeing room  
Lockers + coat storage



# Fifth Floor \* 13,347 sq ft

Over Two Floors for Single Occupier



This option for a single occupier over two floors. The proposed plans show the 5th floor with an arrival + reception, supporting large meeting rooms & a

flexible community space in one wing with focus office space in the other wing. The 6th floor has office space with supporting workplace settings.

## STANDARD WORKING

66 Workstations  
Maximum Occupancy: 1:6 – 206 people

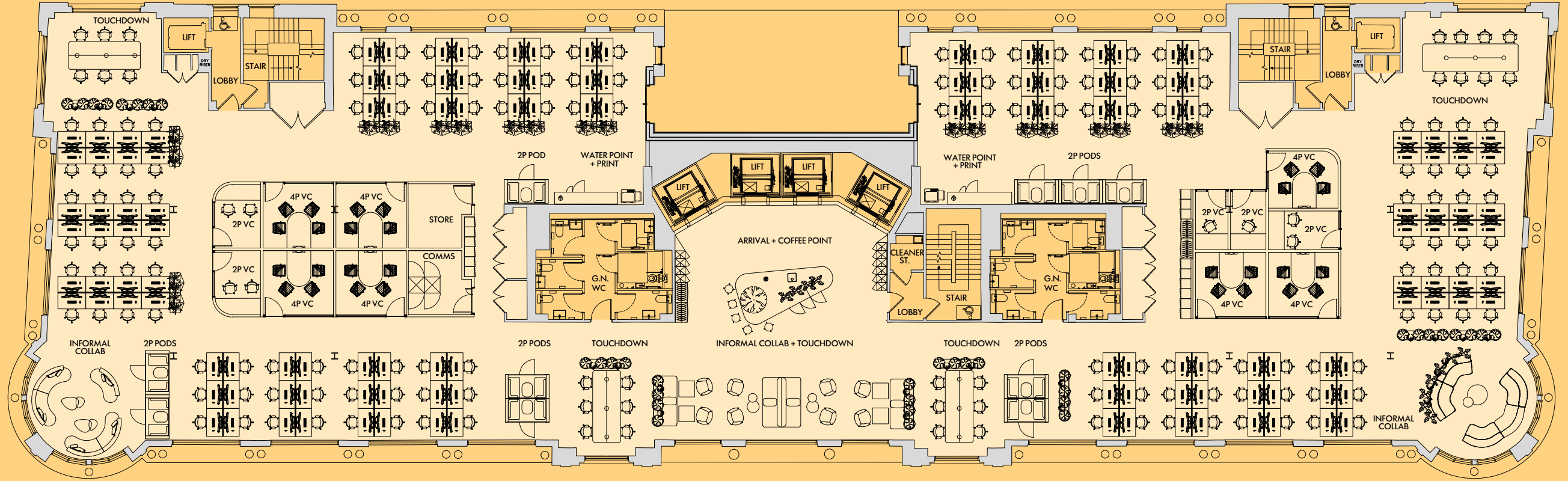
## SUPPORT FACILITIES

- |                                     |  |                           |
|-------------------------------------|--|---------------------------|
| 3 x 10 person meeting room          | 2 x Informal collab  | 5 x 2-4 person pod        |
| 4 x 6 person meeting room           | 1 x Arrival & lounge   | 3 x 1-2 person VC room    |
| 1 x 12 person flexible meeting room | 1 x Community space with flexible seating (incl. informal meeting + working space) | 2 x Store                 |
| 1 x 14 person flexible meeting room |  | 1 x Wellbeing room        |
| 1 x Lounge meeting room             |  | 1 x Water & printer point |
| 3 x 4 person VC room                | 2 x Touchdown table  | Lockers + coat storage    |



# Sixth Floor \* 13,379 sq ft

Over Two Floors for Single Occupier



WATERLOO ST.

The 6th floor houses the main focus workspaces with supporting workplace settings. Including VC rooms and pods. A central tea-prep with lockers and soft

seating at the arrival space allows for a soft landing to the office where staff can bump onto each other.

## STANDARD WORKING

144 Workstations  
Maximum Occupancy: 1:6 – 207 people

## SUPPORT FACILITIES

7 x 4 person VC room	5 x 1-2 person VC room
2 x Informal collaboration	1 x Store
1 x Coffee arrival point & informal meeting	1 x Comms room
4 x Touchdown table	2 x Water & printer point
11 x 2-4 person pod	Lockers + coat storage



# 45 WATERLOO ST.

Glasgow \* G2

FURTHER  
INFORMATION:

**RPG:**

Paul Richardson  
paul.richardson@rpgproperty.co.uk  
+44 7824 492 730

**MC<sup>2</sup>**

Andy Cunningham  
andy@mc2-offices.com  
+44 7793 808 490

**CBRE**

Sarah Hagen  
sarah.hagen@cbre.com  
+44 7468 724 253

[45WATERLOO.COM](https://www.45waterloo.com)

Colin Mackenzie  
colin@mc2-offices.com  
+44 7912 805 890

Martin Speirs  
martin.speirs@cbre.com  
+44 7590 864 816

DISCLAIMER: CBRE LIMITED/MC2 ON THEIR BEHALF AND FOR THE VENDORS OR LESSORS OF THIS PROPERTY WHOSE AGENTS THEY ARE, GIVE NOTICE THAT: 1. THESE PARTICULARS ARE SET OUT AS A GENERAL OUTLINE ONLY FOR GUIDANCE TO INTENDING PURCHASERS OR LESSEES, AND DO NOT CONSTITUTE ANY PART OF AN OFFER OR CONTRACT. 2. WHILST CBRE LIMITED USES REASONABLE ENDEAVOURS TO ENSURE THAT THE INFORMATION IN THESE PARTICULARS IS MATERIALLY CORRECT, ANY INTENDING PURCHASERS, LESSEES OR THIRD PARTIES SHOULD NOT RELY ON THEM AS STATEMENTS OR REPRESENTATIONS OF FACT, BUT MUST SATISFY THEMSELVES BY INSPECTION, SEARCHES, ENQUIRIES, SURVEYS OR OTHERWISE AS TO THEIR ACCURACY. CBRE LIMITED/MC2 AS SUCH CANNOT BE HELD RESPONSIBLE FOR ANY LOSS OR DAMAGE INCLUDING WITHOUT LIMITATION, INDIRECT OR CONSEQUENTIAL LOSS OR DAMAGE, OR ANY LOSS OF PROFITS RESULTING FROM DIRECT OR INDIRECT ACTIONS BASED UPON THE CONTENT OF THESE PARTICULARS. 3. NO PERSON IN THE EMPLOYMENT OF CBRE LIMITED/MC2 HAS ANY AUTHORITY TO MAKE ANY REPRESENTATION OR WARRANTY WHATSOEVER IN RELATION TO THIS PROPERTY. 4. UNLESS OTHERWISE STATED, ALL PURCHASE PRICES AND RENTS ARE CORRECT AT THE DATE OF PUBLICATION AND, UNLESS OTHERWISE STATED, ARE QUOTED EXCLUSIVE OF VAT. LEASE DETAILS AND SERVICE GROUND RENT (WHERE APPLICABLE) ARE GIVEN AS A GUIDE ONLY AND SHOULD BE CHECKED AND CONFIRMED BY YOUR SOLICITOR PRIOR TO EXCHANGE OF CONTRACTS. JUNE 2026.