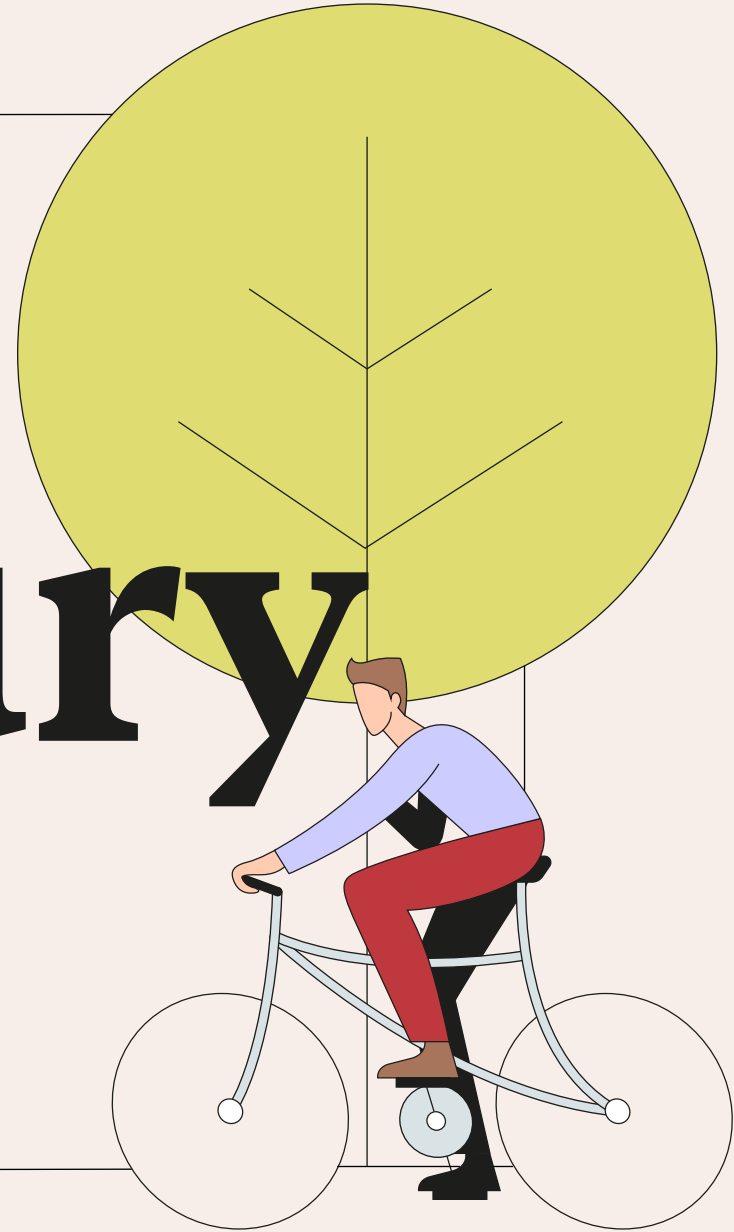


# 77 Shaftesbury Avenue



AVAILABLE NOW: 6,000 SQ FT OF  
NEWLY REFURBISHED CAT A SPACE

**77 Shaftesbury Avenue is an iconic office building with 6,000 sq ft to let on the 6th floor.**

**The building has been comprehensively refurbished to offer a light and welcoming workspace and offers showers and changing facilities, cycle storage and a private roof terrace on the 6th floor offering views across Soho.**



77 Shaftesbury Avenue lies in vibrant Soho and is just a few minutes' walk to Piccadilly Circus and the newly opened Elizabeth Line at Tottenham Court Road station.

Exterior image of the building at the corner of Shaftesbury Avenue and Frith Street





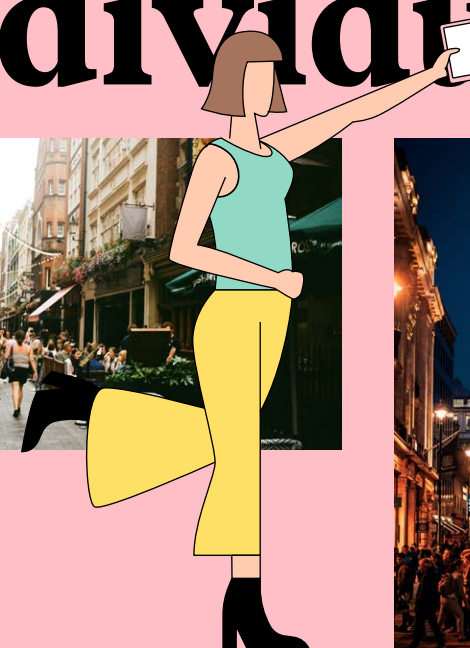
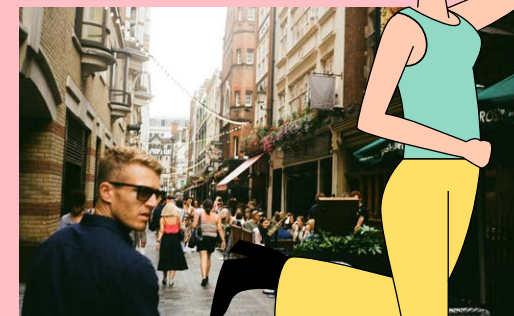
# Soho: the home of



Buzzing with some of London's best restaurants, entertainment & nightlife.

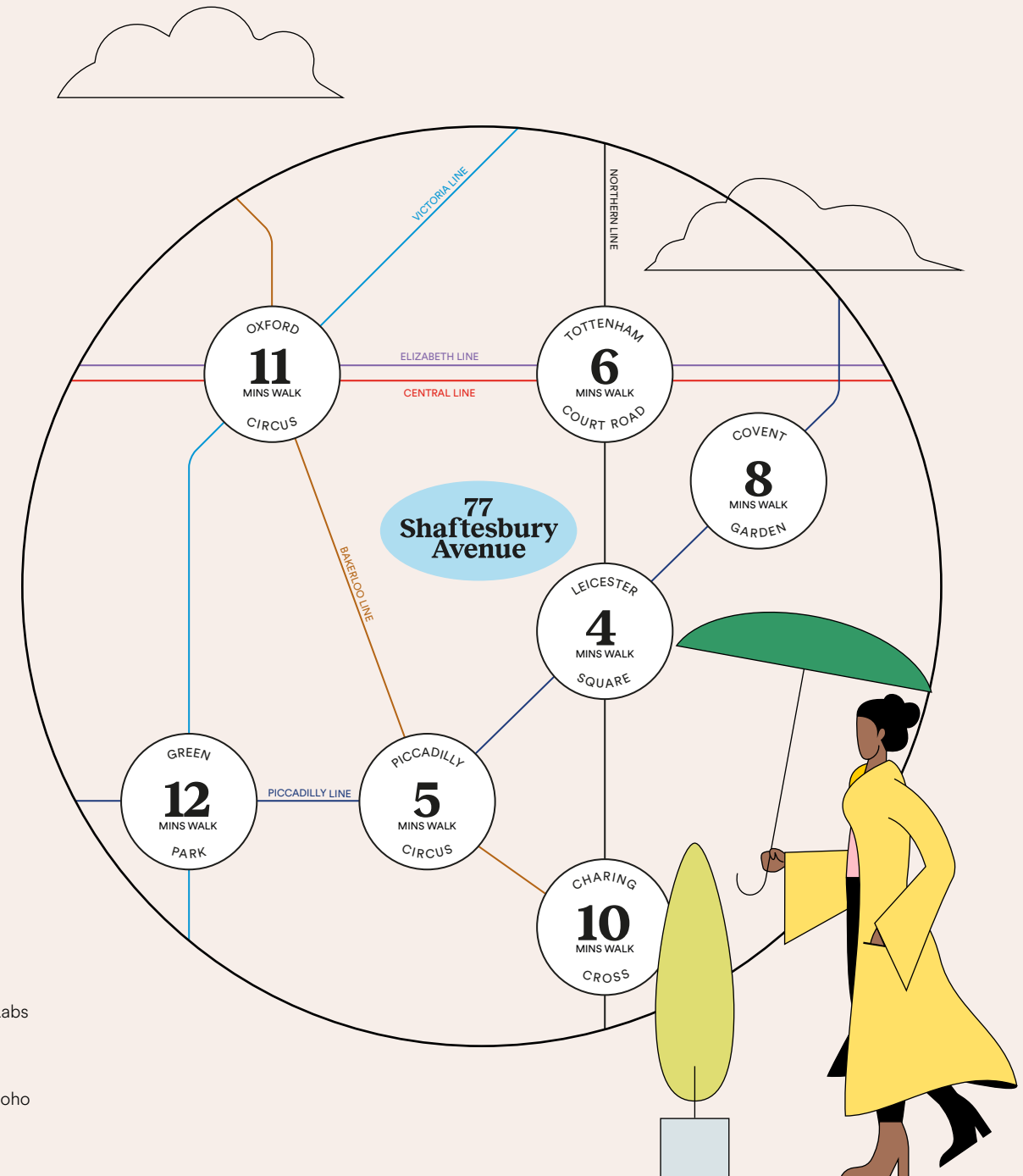
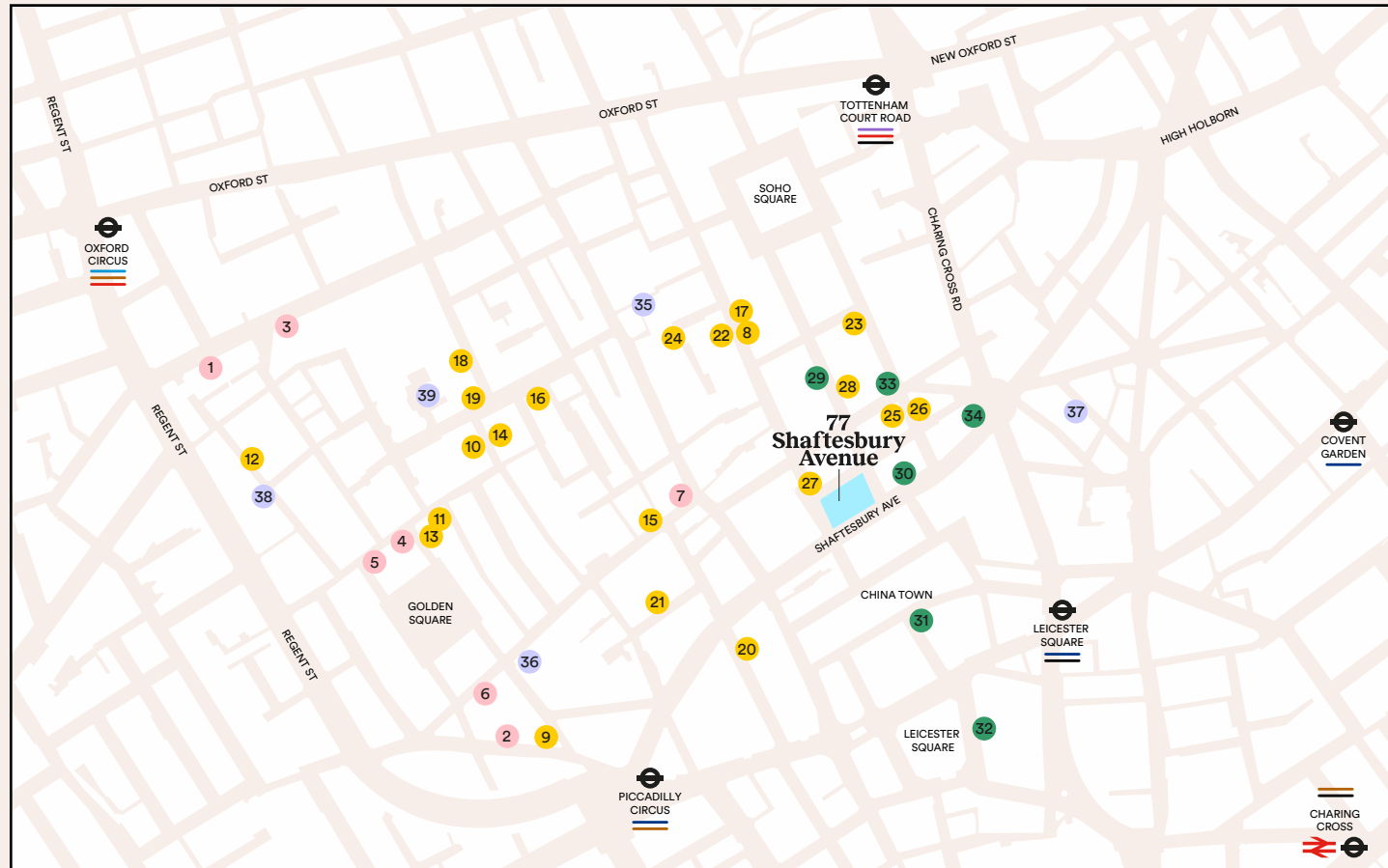


# individuality



# Central location, great connections

Seven London underground stations within a 15 minute walk, Soho's connectivity, along with its creative spirit and eclectic mix of occupiers, makes it a premium central London location.



## RETAIL

- 1 - Liberty
- 2 - Whole Foods
- 3 - Levi's
- 4 - Ganni
- 5 - B&sh
- 6 - Rapha
- 7 - JW Anderson

## FOOD & DRINK

- 8 - Quo Vadis
- 9 - Brasserie Zedel
- 10 - Mildreds
- 11 - Sticks 'n' Sushi
- 12 - Dishoom
- 13 - Bob Bob Ricard
- 14 - Andrew Edmunds
- 15 - Randall & Aubin
- 16 - Temper
- 17 - Barrafina
- 18 - Social Eating House
- 19 - Brindisa
- 20 - The Palomar
- 21 - Boca di Lupo
- 22 - Soho House
- 23 - Lina Stores

## ENTERTAINMENT

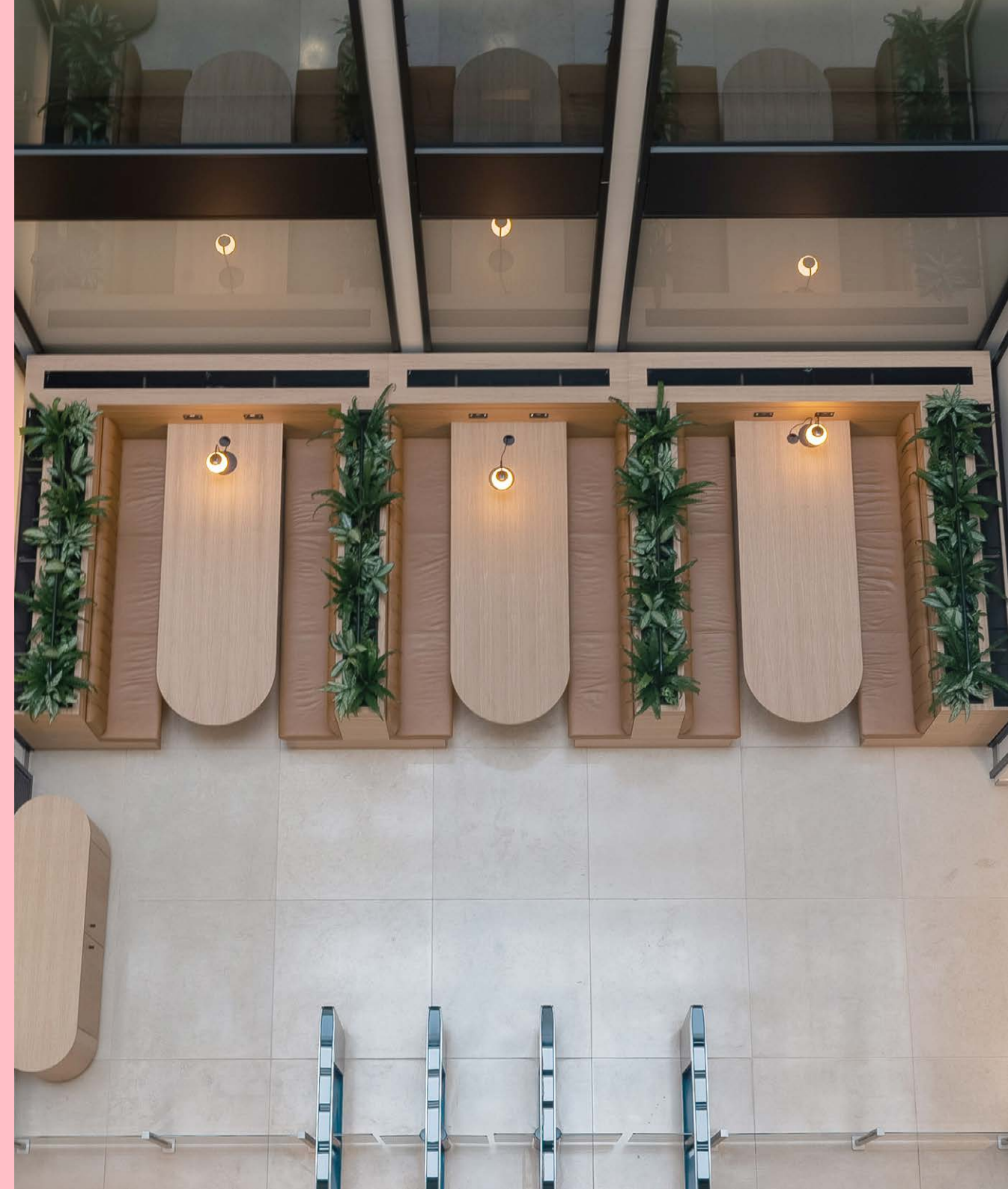
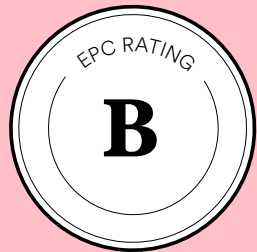
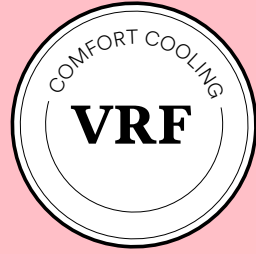
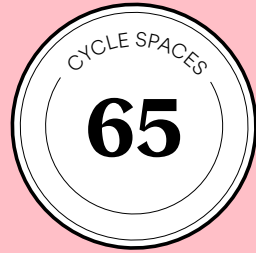
- 24 - Refuel
- 25 - Kettner's Townhouse
- 26 - The Coach & Horses
- 27 - The French House
- 28 - Bar Italia
- 29 - Ronnie Scott's
- 30 - Curzon Cinema
- 31 - Prince Charles Cinema
- 32 - Odeon Cinema
- 33 - Prince Edward Theatre
- 34 - Palace Theatre

## GYMS

- 35 - Soho Fitness Labs
- 36 - Third Space
- 37 - Digma Fitness
- 38 - Barry's Soho
- 39 - F45 Training Soho

# Building highlights

77 Shaftesbury Avenue offers all the premium amenities you would expect to find in central London's most desirable offices, including changing rooms, cycle storage, a private roof terrace and communal workspace with self-service coffee in the reception area.



Right - Communal workspace in the atrium



Left - 6th floor office space  
Bottom left - 6th floor office space  
Below - 6th floor private roof terrace



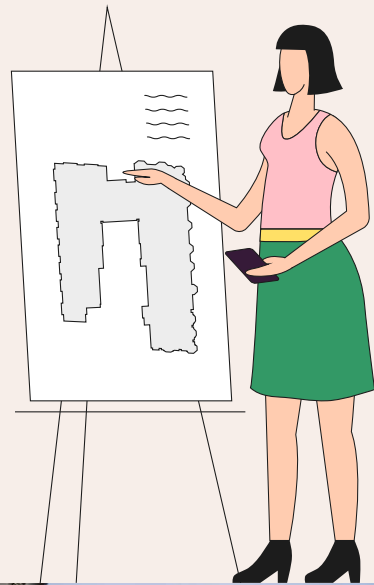


Top left - Reception area  
Bottom left - Coffee and communal workspace in atrium  
Right - Atrium

# Floorplans

## Accommodation

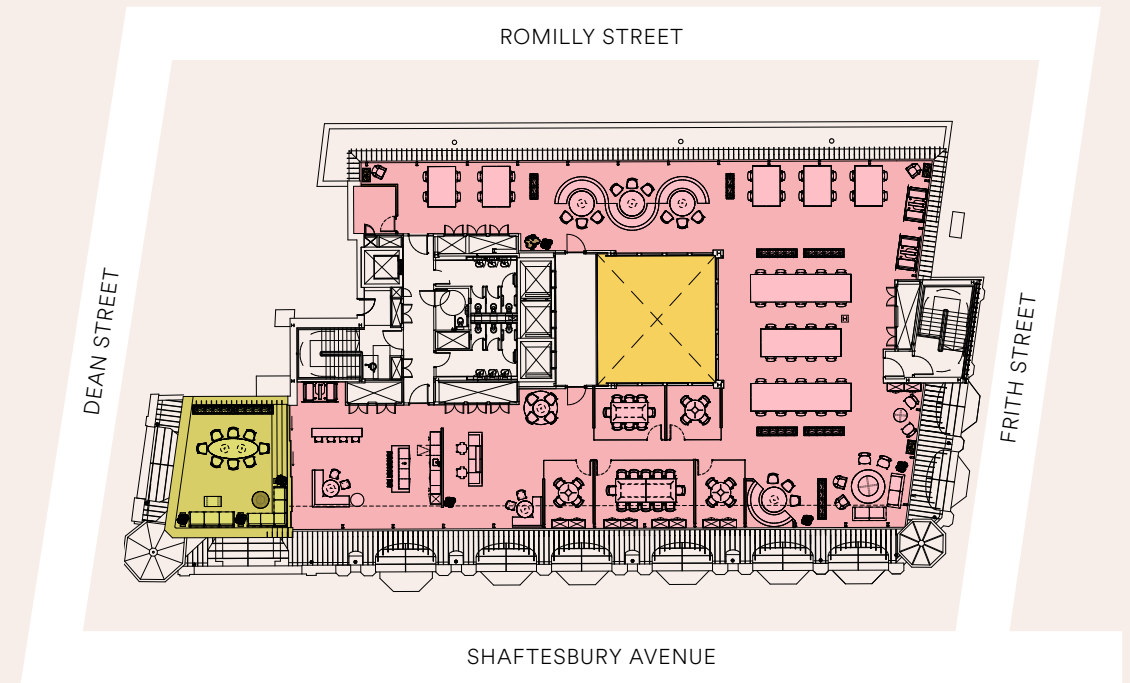
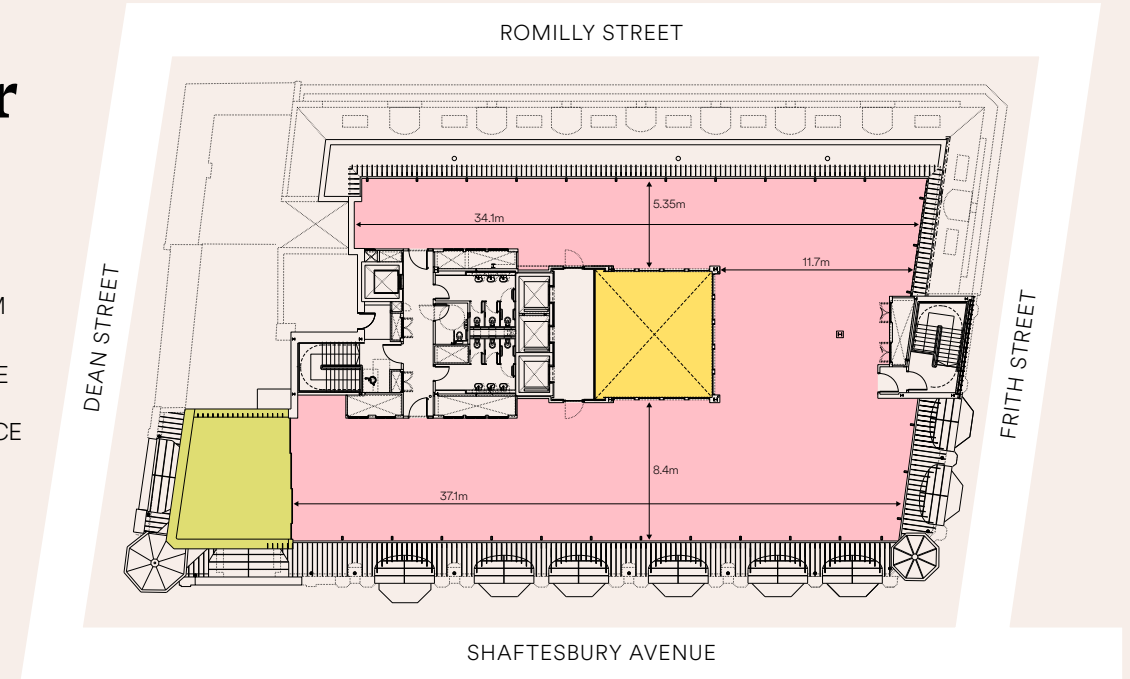
FLOOR	SQ FT	SQ M
6th	6,035	561
<b>TOTAL</b>	<b>6,035</b>	<b>561</b>



6th floor private roof terrace

## 6th floor

- OFFICE
- ATRIUM
- PRIVATE ROOF TERRACE



# Get in touch



JOEL RANDALL  
T: +44 (0)7525 897 012  
E: joel.randall@cushwake.com

ANDY TYLER  
T: +44 (0)7973 836 236  
E: andy.tyler@cushwake.com

ALIONA STRUKOVA  
T: +44 (0)7810 855 734  
E: aliona.strukova@cushwake.com

Ashwell  
LONDON

HARRIET JAMES  
T: +44 (0)7586 300 172  
E: harrietjames@ashwell.london

ASH SHARMA  
T: +44 (0)7721 001 751  
E: ash@ashwell.london

77  
Shaftesbury  
Avenue

77SHAFTESBURYAVENUE.CO.UK

