

**27 RATHBONE STREET,
FITZROVA,
LONDON, W1T 1NH**

Office / Showroom / Retail (Class E)
Space to Let – 1,586 sq ft.

**LOCATION**

The property benefits from excellent nearby amenities such as local and established chain restaurants, pubs and cafes. Additionally, Oxford Street with internationally renowned stores is located in close proximity.


DESCRIPTION

27 Rathbone Street is a prominent building on Rathbone Street. The available space comprises both ground and lower ground with private access and great natural light throughout the ground floor space.

AMENITIES

- 1 GB Fibre line installed
- Private entrance
- Refurbished WC's
- Air conditioning
- Perimeter trunking

TRANSPORT LINKS

Goode Street		5 minutes
Tottenham Court Road		6 minutes
Warren Street		11 minutes

AVAILABILITY

Ground Floor – 730 sq ft.
Lower Ground Floor – 856 sq ft.
Total = 1,586 sq ft.

TERMS

A new lease is available directly from the Landlord.

Rent: £40.00 per sq.ft

Rates: £16.95 per sq.ft

Service charge: N/A

CONTACT

Angus Marlow-Thomas: 020 7866 8612

angus.marlow-thomas@montagu-evans.co.uk

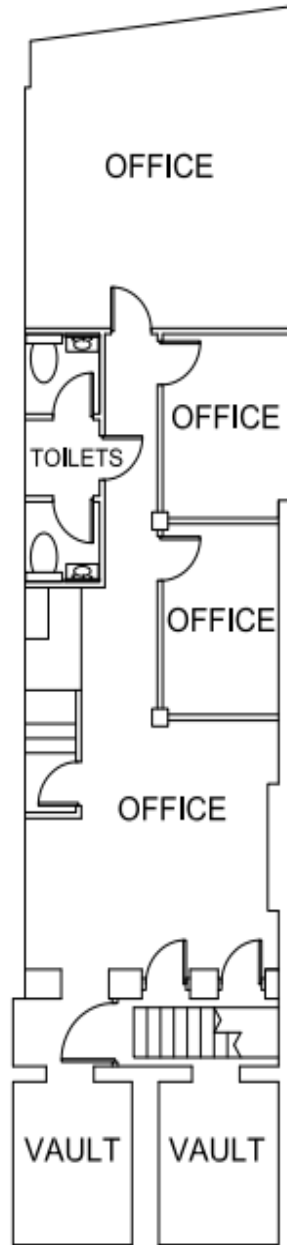
Katie Stewart: 020 7866 8692

kaie.stewart@montagu-evans.co.uk

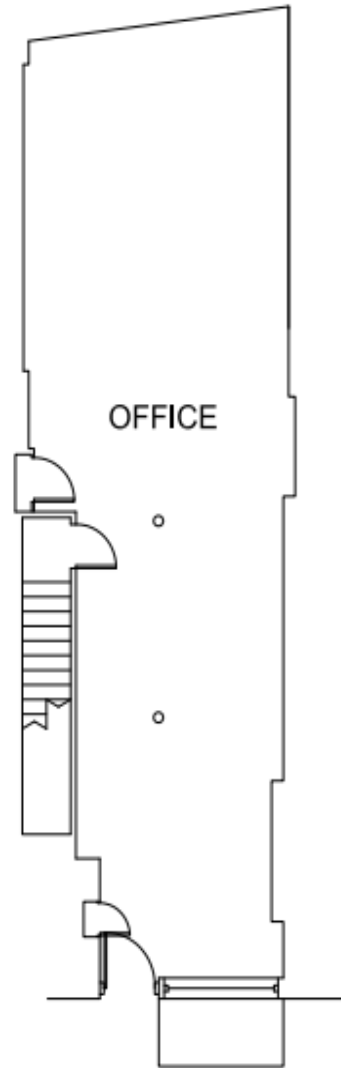
Gus Clode: 07810715055

Gus.Clode@montagu-evans.co.uk

For further information or to arrange a viewing.



LOWER GROUND FLOOR



GROUND FLOOR