

AREA PLAN

MEADWAY COURT

Clovelly Way, STEVENAGE, SG1

Second Floor

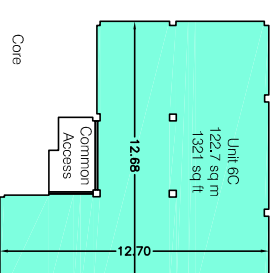
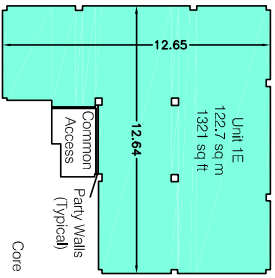
Net Internal Area

OFFICE 497.6 sq m 5357 sq ft

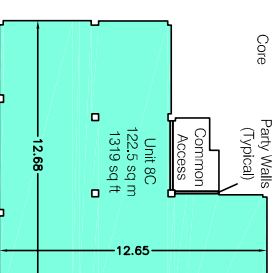
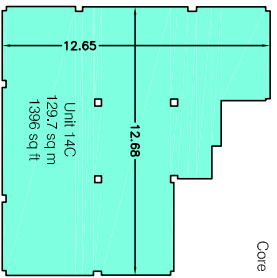
TOTAL NIA: 497.6 sq m 5357 sq ft

The following has been EXCLUDED from the TOTAL NIA:

Common Access 13.9 sq m 214 sq ft
Party Walls 1.7 sq m 18 sq ft



Courtyard



Condition of Site:
Occupied
Vacant
Heavy Fit-Out
Shell & Core
Under Construction
Cat A Fit-Out

Notes:
This drawing complies with the 6th edition of the RICS code and indicates the extent of the areas quoted, produced to an accuracy commensurate with standard presentation scales. It is held in a scaled original CAD format.
Dashed line denotes assumed wall line. Wall line inaccessible at the time of survey.

Revisions:
A - Original Issue (April 2015)

Dwg No. 33118-58-A2

Issue A April 2015

Scaled for presentation purposes

Plowman Craven 

Regulated by RICS

+44(0)1582 765566  www.plowmancraven.co.uk