



4 Hill Street, London, W1J 5NE

Stylish office suites (163 to 737 sq ft) with great natural light, in a stylish town house located moments from Berkeley Street.

Key Points

- Multiple suites available ranging from 163 sq ft to 737 sq ft
- Suites benefit from great natural light
- Available on short term, flexible lease / licence, on an all inclusive basis
- Staffed reception
- Great transport links with Bond Street and Green Park stations easily accessible
- Open-plan layout to accommodate a range of workstations
- 24 Hour Access

Summary

Available Size	163 to 737 sq ft
Rent	£25,000 - £60,000 per annum
Rates Payable	N/A
Service Charge	N/A
Estate Charge	N/A
Total	-
VAT	Applicable
Legal Fees	Each party to bear their own costs
EPC Rating	Not applicable

Description

A range of elegant and well-presented office suites, ranging from 163 to 508 sq ft arranged over ground and lower ground floors. Each suite offers bright and flexible workspace in a characterful period building. The accommodation benefits from excellent natural light, high ceilings, and a practical layout suitable for a variety of professional occupiers. The space combines classic architectural features with modern functionality, creating an attractive and efficient working environment. Amenities include WC facilities, kitchenette provisions, and secure entry access.

The lower ground floor, comprising of 737 sq ft, can be let in its entirety and comprises of private offices / meeting rooms, and open plan working space.

Ideal for boutique firms, consultancies, or creative businesses seeking a prestigious West End address, this property provides an excellent opportunity to establish a presence in one of the capital's most sought-after districts.

Location

Situated on Hill Street in the heart of London's prime Mayfair district, the property is moments from Berkeley Square and within walking distance of Green Park station. The area offers an exceptional selection of high-end restaurants, cafés, and retail amenities along Bond Street and the surrounding streets. Excellent transport links provide convenient access across the West End and beyond.

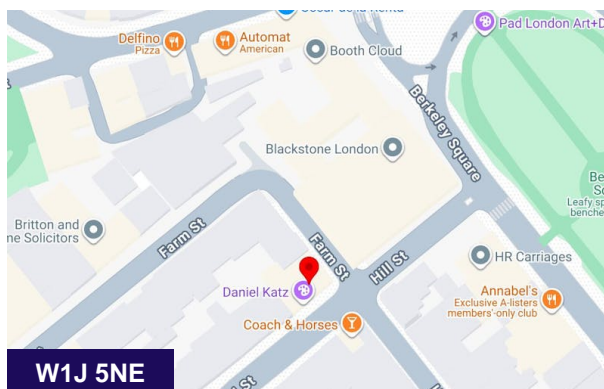
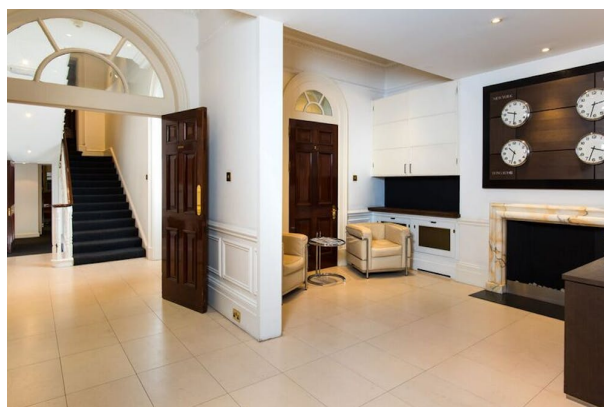
Accommodation

The accommodation comprises the following areas:

Name	sq ft	sq m	Rent	Availability
Ground - Middle Office	293	27.22	£45,000 /annum	Available
Ground - Rear Office	163	15.14	£25,000 /annum	Available
Lower Ground - Front	229	21.27	£25,000 /annum	Available
Lower Ground - Rear	508	47.19	£60,000 /annum	Available
Total	1,193	110.82		

Terms

Each office suite is available on flexible terms and on an all inclusive basis, with rents ranging from £25,000 to £60,000 pa.



Get in touch



George Cracknell

07384 897647

georgecracknell@johndwood.com



Craig Van Straten

020 7629 9050 | 07763 928238

craigvanstraten@johndwood.com



Sam Marks

020 7629 9050 | 07436060203

sammmarks@johndwood.com

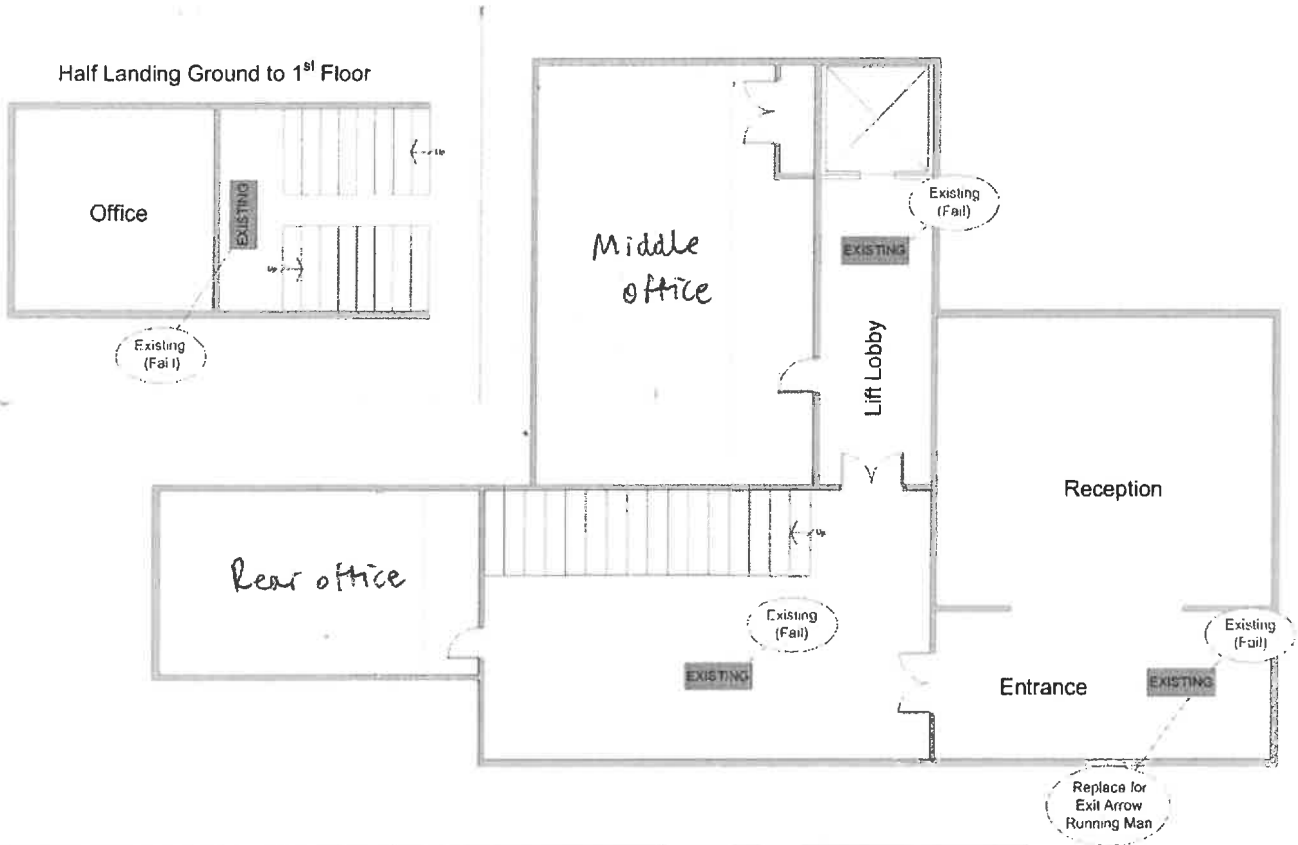
The above information contained within this email is sent subject to contract. These particulars are for general information only and do not constitute any part of an offer or contract. All statements contained therein are made without responsibility on the part of the vendors or lessors and are not to be relied upon as statement or representation of fact. Intending purchasers or lessees must satisfy themselves, by inspection, or otherwise, as to the correctness of each of the statements of dimensions contained in these particulars. Generated on 10/06/2026



SAFESCAPE SERVICES LIMITED

SAFESCAPE SERVICES LIMITED
KINGSTON ROAD

Endeavour House
259 Forstal Road
Aylesford Kent ME20 7AQ
Tel: +44 (0) 1622 862 282
Fax: 01622 331066
Mob: 07973 194109
E-Mail: nicholas.holness@btinternet.com



	Project Rismenda, 4 Hill Street, London W1	Title Ground Floor Emergency Lighting Proposal to BS5266	Key Proposed New 8 Watt 3 Hour Emergency Light Fitting Existing Emergency Light Fitting
	Date 22 nd May 2008	Drawing Number N HSA/GF 00 1	

Basement Office Floor Plan

