

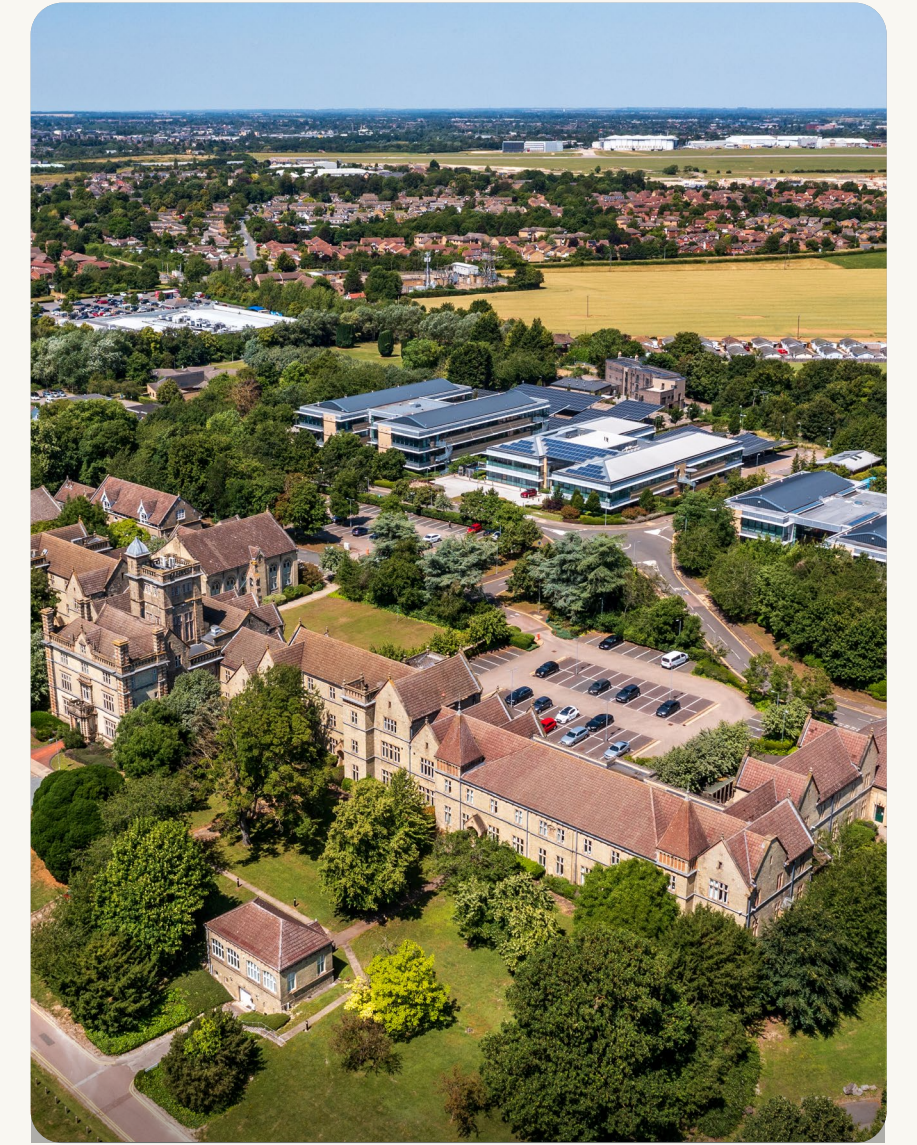


A Brighter Place to Be

camLIFE

The complete campus for Cambridge

Bringing together best-in-class fitted lab space, workspace and lifestyle amenities, with over half of CamLIFE's 42 acre campus left open as green space.



Well-connected by transport links



12 mins

To Cambridge station & Addenbrooke's Hospital by car



16 mins

To Cambridge station & Addenbrooke's Hospital by bike



25 mins

To Cambridge station & historic centre by bus



28 mins

To Stansted Airport by train from Cambridge station



48 mins

To King's Cross station by train from Cambridge station

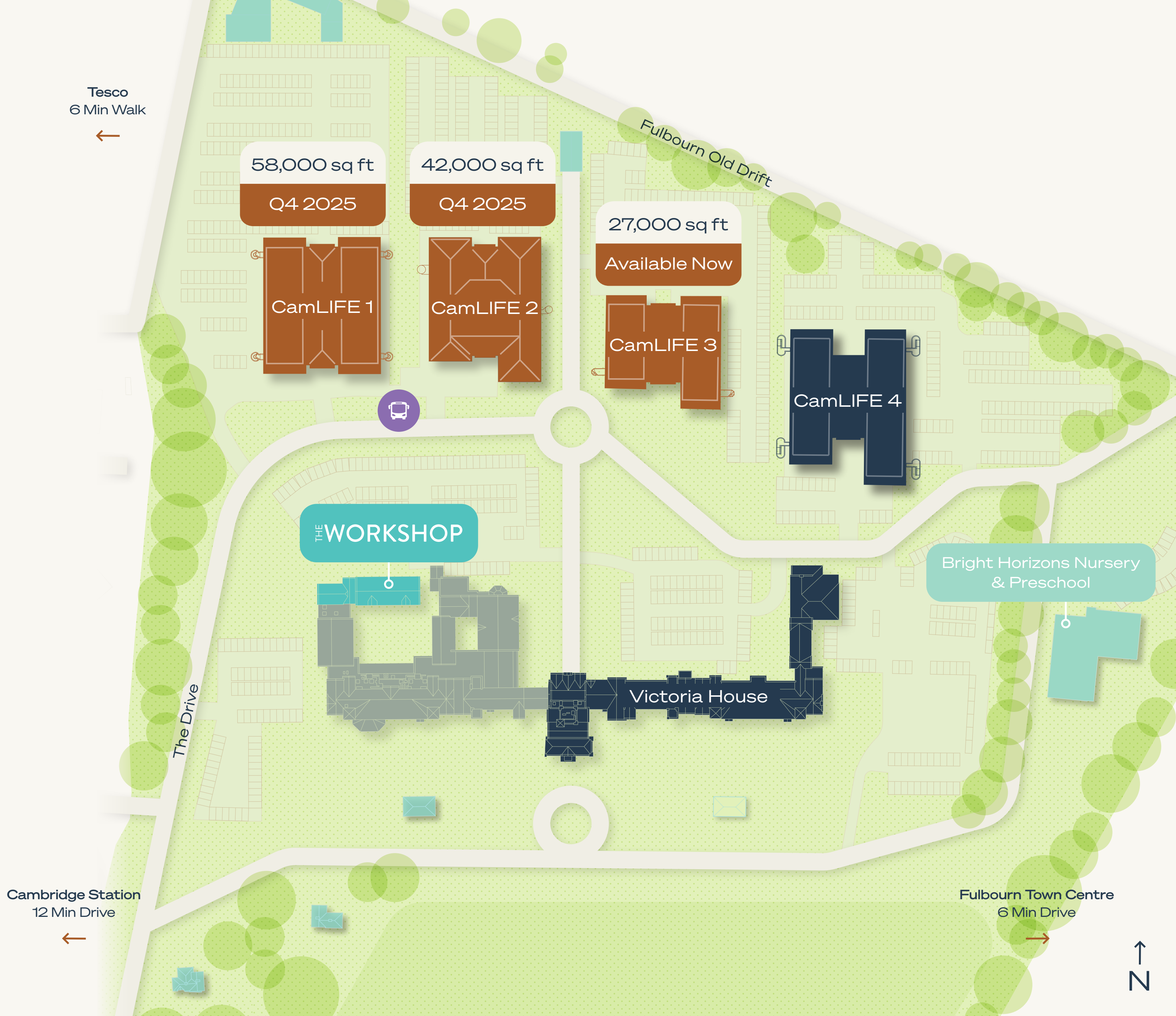


Join the 42-acre technology & life science campus

Full Building Sizes:
27,000-58,000 sq ft (NIA)

Suite Sizes From:
4,500 sq ft (NIA)

- Lab
- Office
- Amenity



Fitted Plus Labs

Day 1: Landlord Provided

- Demountable glazed partitions
- Floor finishes – resilient flooring with cove base
- Ceilings with general illumination and Ceiling Service Tiles
- Lab casework – 50% lab benches, lab sinks, fume hood
- Handwash sink and emergency shower adjacent to entrance
- Statutory signage & manifestation

Day 2: Possible Tenant Modifications

- Remainder of lab casework and furniture
- Additional Lab Support Rooms (Tissue Culture Labs etc.) available upon request

Day 1



Day 2



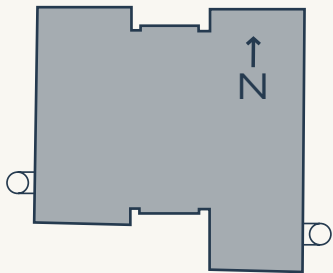
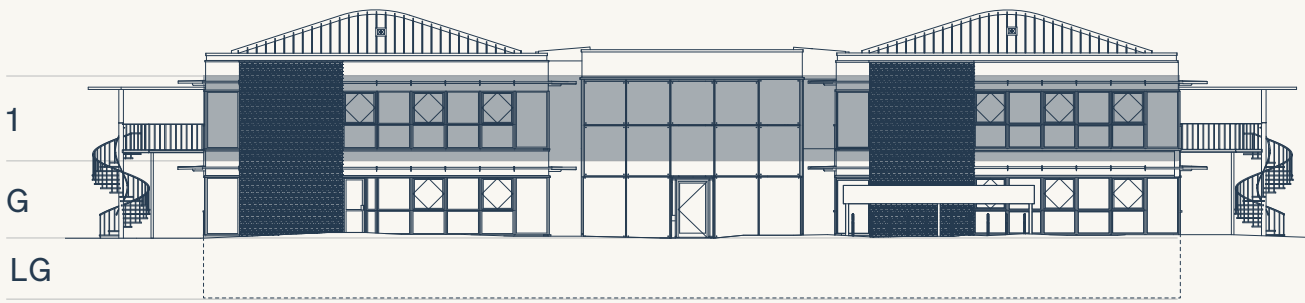
Fitted Plus Labs

Full Floor:
14,000 sq ft (NIA)

Suite Sizes:
from 6,000 sq ft to 8,000 sq ft (NIA)

Base building Fitted Plus Labs include the following
equipment with the ability to customise per customer need:

- 50–62 Lab Benches
- 3 Lab Sinks
- 1 Fume Cupboard
- 1 Emergency Shower



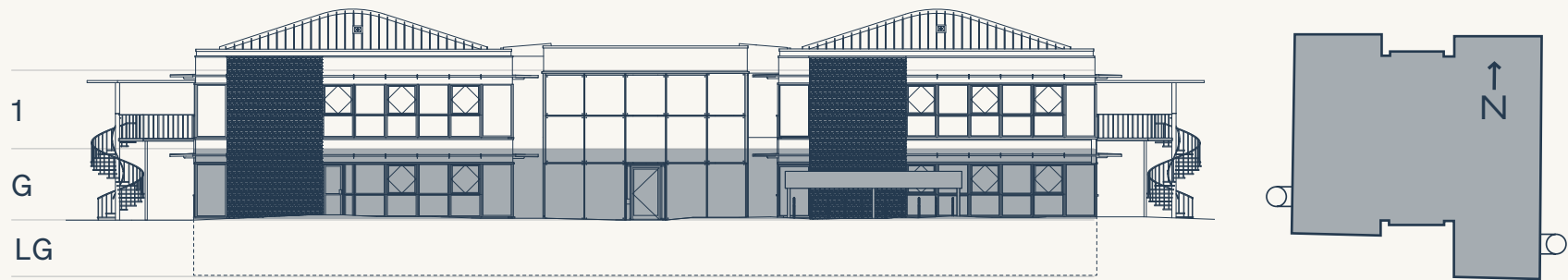
Fitted Plus Labs

Full Floor:
14,000 sq ft (NIA)

Suite Sizes:
from 6,000 sq ft to 8,000 sq ft (NIA)

Base building Fitted Plus Labs include the following
equipment with the ability to customise per customer need:

- 50–62 Lab Benches
- 3 Lab Sinks
- 1 Fume Cupboard
- 1 Emergency Shower



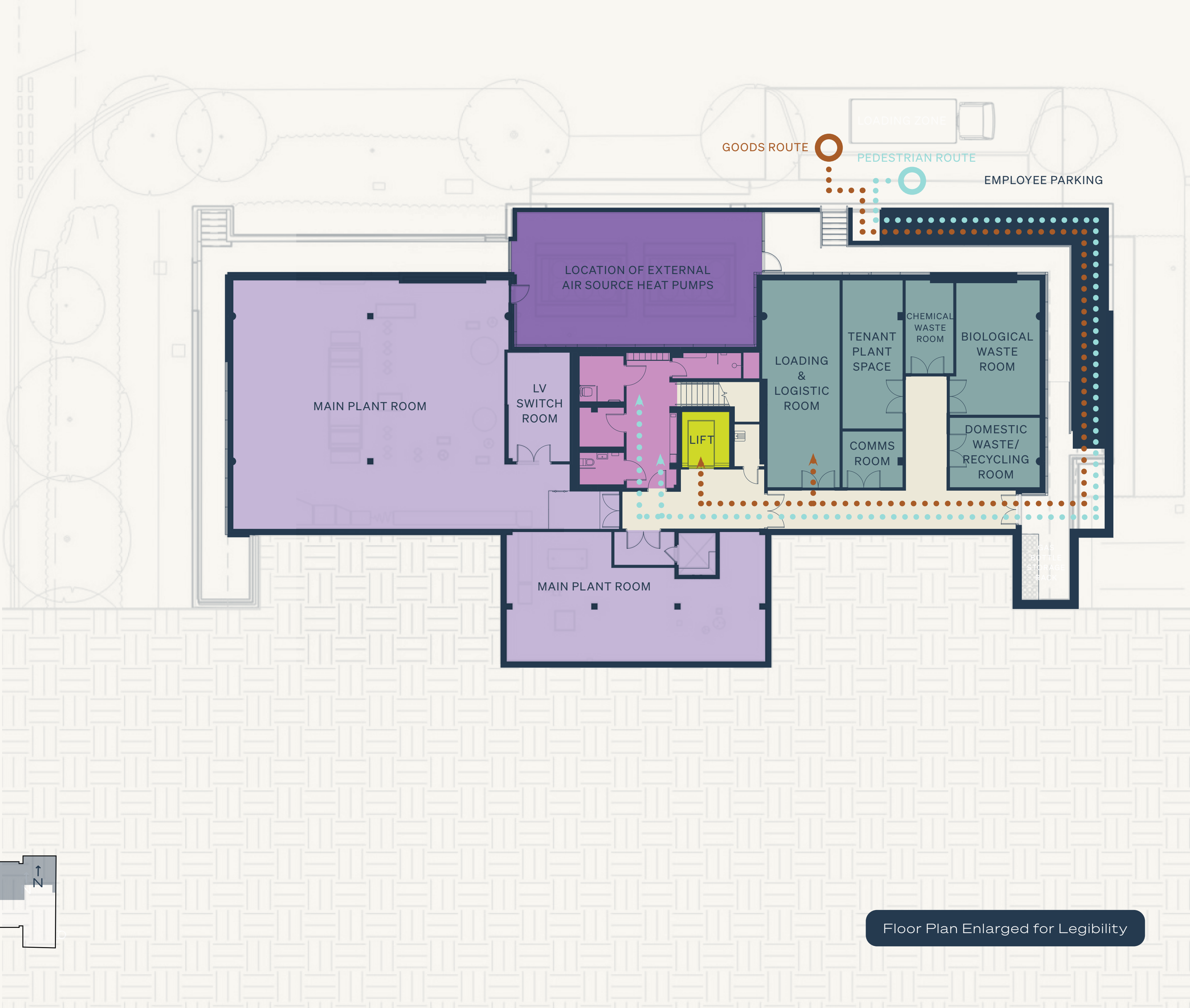
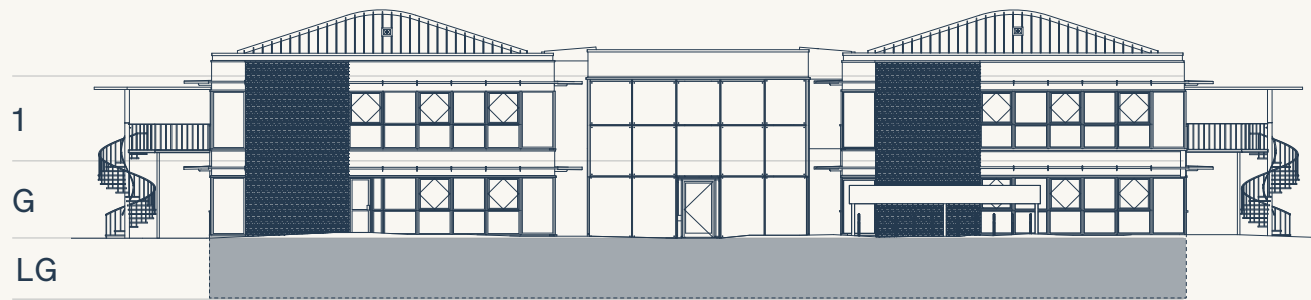
Back of House

Legend:

- End of Trip
- Back of House
- Circulation
- Core / Plant
- External Plant
- Lift

Delivery Route:

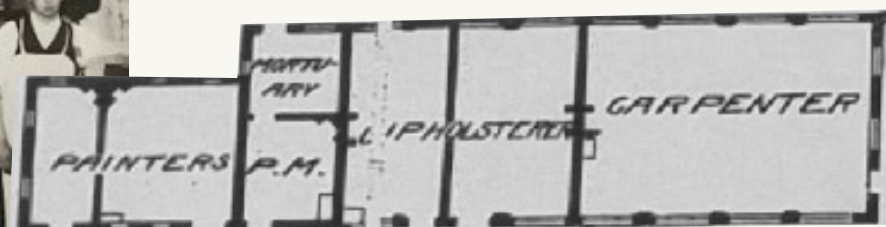
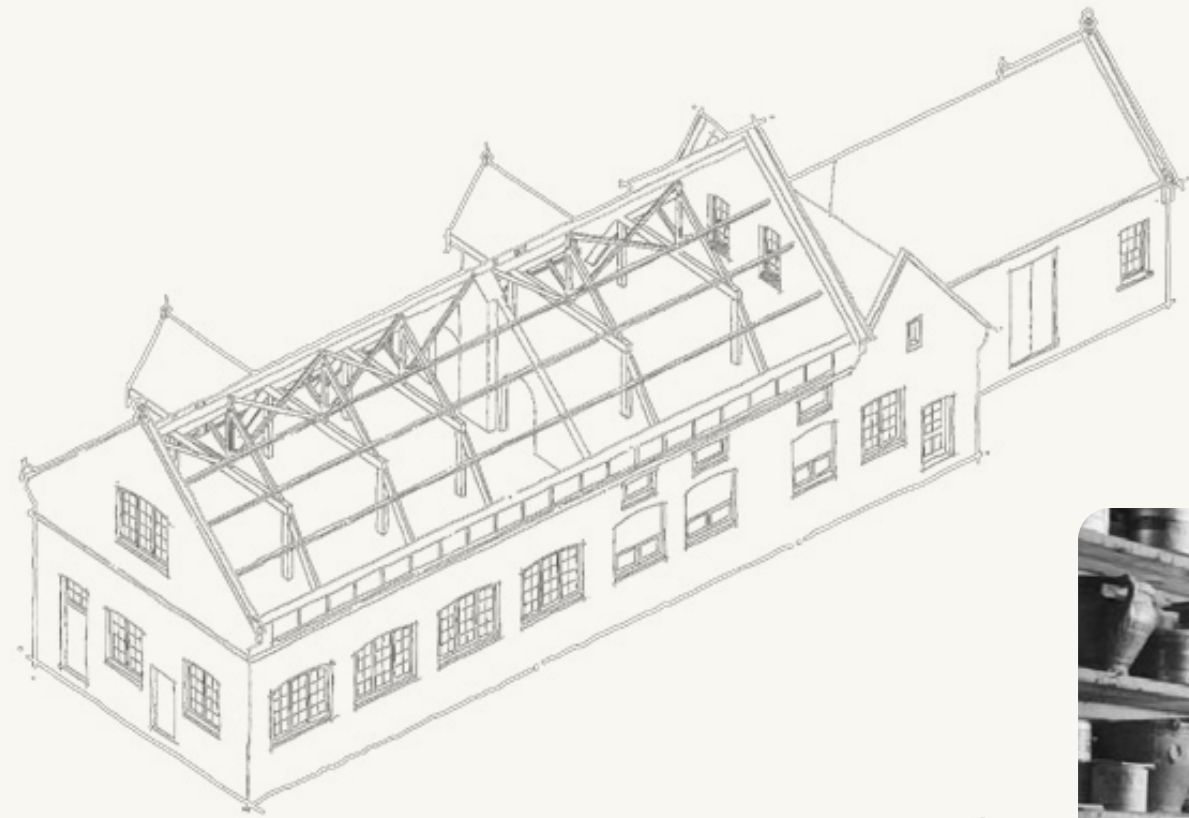
- Pedestrian Route
- Goods Route



Floor Plan Enlarged for Legibility

The Workshop

The Workshop at CamLIFE is a modern amenity centre inspired by its maker-space past. Featuring a gym, lounge, flexible kitchen, and meeting rooms, it blends history and innovation to create a space for work, connection, and well-being.



Introducing Elevate™

Elevate is Longfellow’s proprietary customer events and hospitality programme. Elevate by Longfellow is the final word in thoughtful, curated experiences, enhancing modern, functional workspaces with exclusive lifestyle perks.



BALANCE

- Fitness centre
- Wellness events & lunch and learns
- Biking & walking trails



ACCESS

- Monthly newsletter
- On-site nursery
- Mobile library



CONNECTIONS

- Networking & happy hours
- Signature events
- Connection into Longfellow's broad network



GENEROSITY

- Donation collections



BRAINPOWER

- Interactive workshops
- Fully equipped meeting & breakout spaces
- Industry-focused talks



TASTE

- Seasonal food trucks
- On-site food & beverage



PLAY

- Competitions & prizes

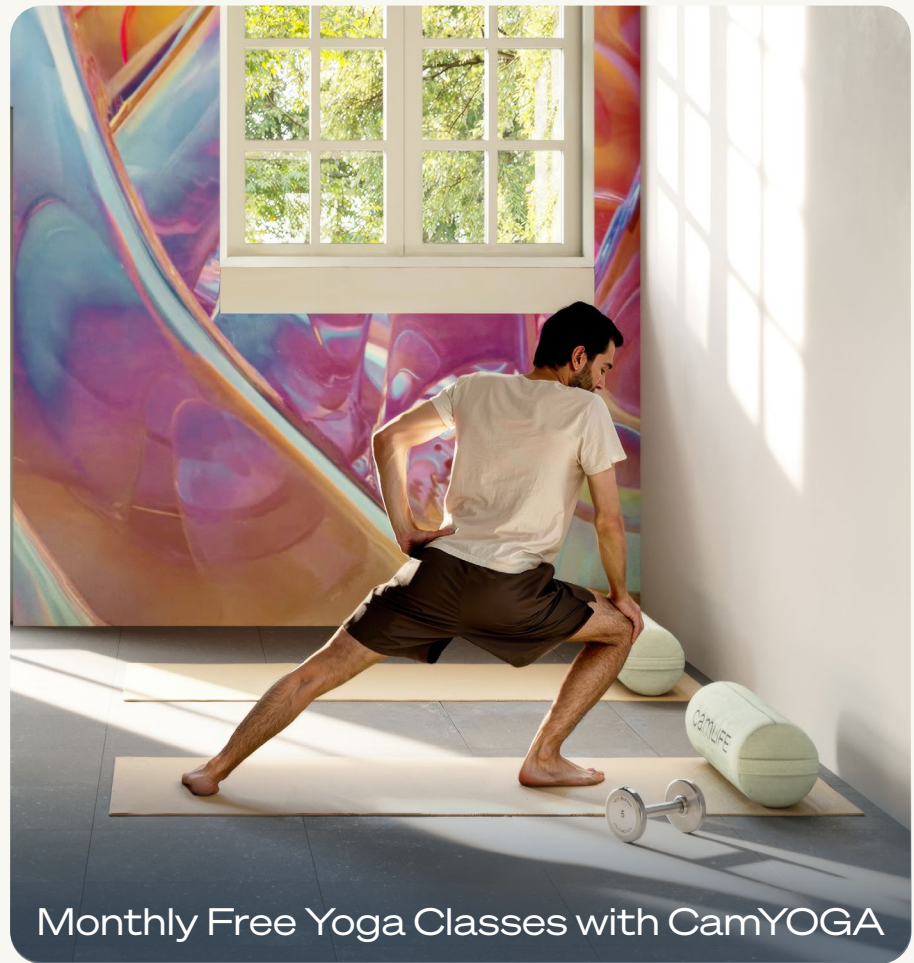
WATCH THE FILM



LEARN MORE ABOUT ELEVATE



Third Thursday Food Trucks



Monthly Free Yoga Classes with CamYOGA



The Workshop Amenity Space



Events & Workshops

camlife.co.uk

As developer and operator,
we're excited to deliver on
our campus vision, and
be here to support you in
achieving your goals.

lfrep.com

Jordan Betz
Managing Director
Portfolio Leasing
jbetz@lfrep.com

Neill Sherron
Partner
Portfolio Leasing
nsherron@lfrep.com

James Evans
Director, Operations
+44 7826 062 449
jevans@lfrep.com

Max Bryan
+44 7793 808 114
max.bryan@bidwells.co.uk

Dick Wise
+44 7879 667 543
dick.wise@bidwells.co.uk

Tamarah Keir
+44 7442 668 105
tamarah.keir@bidwells.co.uk

Rupert Dando
+44 7813 624 276
rupert.dando@nmrk.com

Paddy Shipp
+44 7469 155 531
paddy.shipp@nmrk.com