

CASSINI COURT

RANDALLS WAY
LEATHERHEAD
SURREY KT22 7TW







Amenities

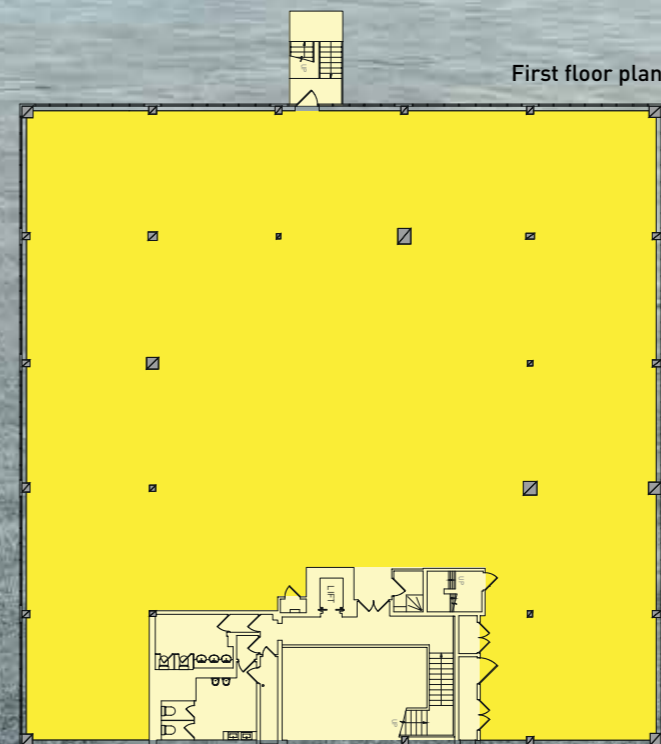
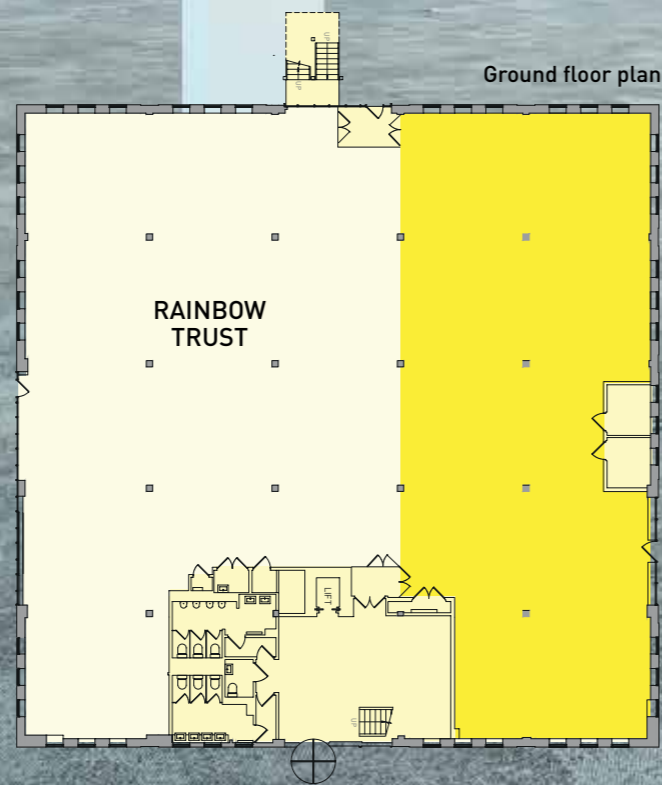
- Double height reception
- Air conditioning
- Full access raised floors
- Suspended ceilings with recessed LED lighting
- Passenger lift
- 85 on site secure car parking spaces 1:300 sq ft
- Male, female and disabled WC's
- Shower facility
- Covered bike rack
- EPC rating C64

Accommodation

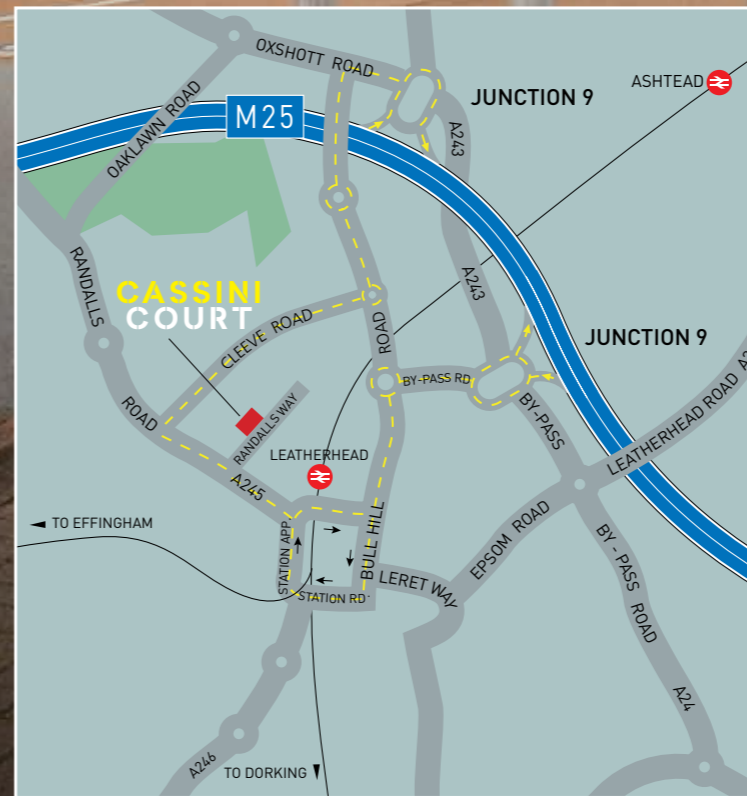
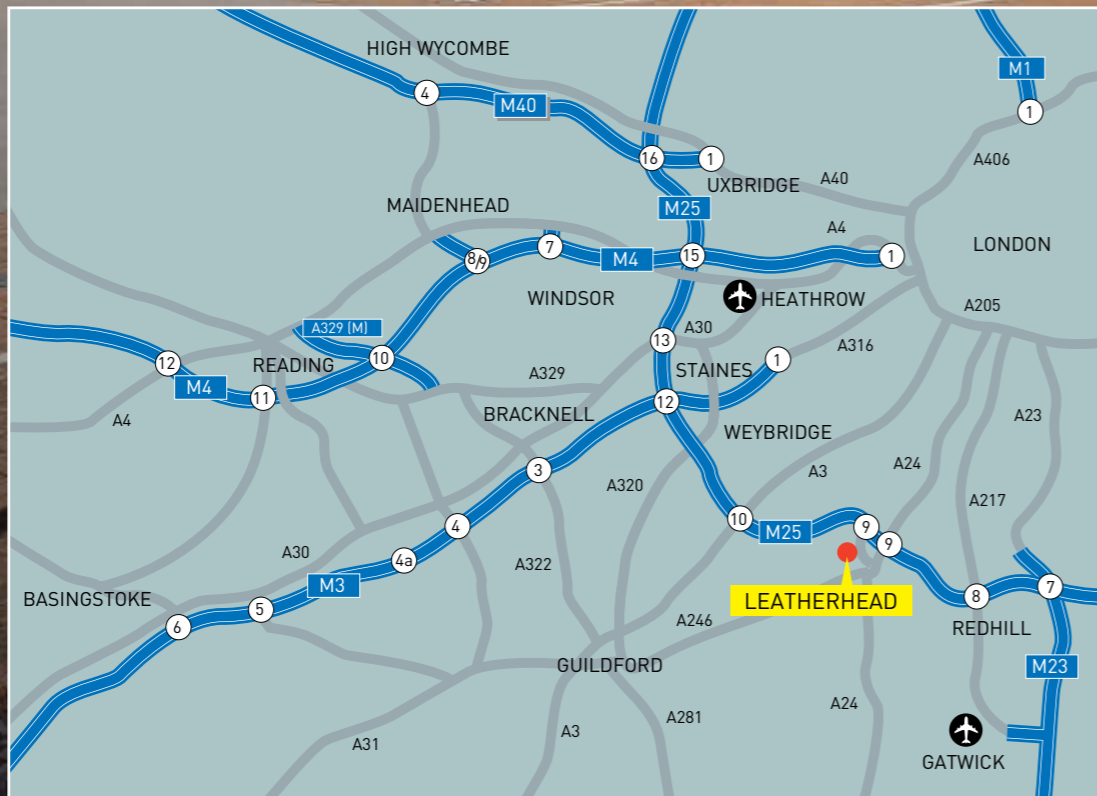
Approximate net internal areas:

First floor	8,478 sq ft	788 sq m
Part Ground floor	LET TO RAINBOW TRUST	
Part Ground floor	3,500 sq ft	325 sq m
Reception	507 sq ft	47 sq m
Total	12,485 sq ft	1,160 sq m

Floors can be subdivided.



SPACE AVAILABLE FROM 3,500 SQ FT



Location

Leatherhead is located approximately 18 miles south of Central London at Junction 9 of the M25.

The property is situated on a modern business park in Randalls Way approx 500 metres from the mainline station which provides a frequent services to London Victoria and London Waterloo approx travel time of 46 and 50 minutes. The town centre is about two thirds of a mile which provides a good level of amenities.

RANDALLS WAY
LEATHERHEAD
SURREY KT22 7TW

CASSINICOURT

Terms

New leases available direct from the Landlord.

Rent

On application.

Viewing

Strictly by appointment through joint sole agents:-

cassinicourt.com

David Cuthbert
020 3130 6401
dcuthbert@hanovergreen.co.uk

Mark Skelton
01372 840 296
mskelton@shw.co.uk



Owned and managed by:



MISREPRESENTATION ACT- The particulars contained in this brochure have been produced in good faith, are set out as a general guide and do not constitute the whole or part of any contract. All liability, negligence or otherwise, arising from the use these particulars is hereby excluded. Compiled July 2018.